

0154  
Bum  
52  
APD

District I  
1625 N. French Dr., Hobbs, NM 88240  
District II  
811 South First, Artesia, NM 88210  
District III  
1000 Rio Brazos Road, Aztec, NM 87410  
District IV  
2040 South Pacheco, Santa Fe, NM 87505

State of New Mexico  
Energy Minerals and Natural Resources

Oil Conservation Division  
2040 South Pacheco  
Santa Fe, NM 87505

Form C-101  
Revised March 17, 1999

Submit to appropriate District Office  
State Lease - 6 Copies  
Fee Lease - 5 Copies

☐ AMENDED REPORT

**APPLICATION FOR PERMIT TO DRILL, RE-ENTER, DEEPEN, PLUGBACK, OR ADD A ZONE**

<sup>1</sup> Operator Name and Address Reliance Energy, Inc. P. O. Box 10946, Midland, Texas 79702		<sup>2</sup> OGRID Number 149441
		<sup>3</sup> API Number 30-005-63265
<sup>4</sup> Property Code 26-233	<sup>5</sup> Property Name Willow Spring "29" State	<sup>6</sup> Well No. 1

**Surface Location**

UL or lot no.	Section	Township	Range	Lot Idn	Feet from the	North/South line	Feet from the	East/West line	County
N	29	4S	25E		660	South	1980	West	Chaves

**Proposed Bottom Hole Location If Different From Surface**

UL or lot no.	Section	Township	Range	Lot Idn	Feet from the	North/South line	Feet from the	East/West line	County

**Proposed Pool 1**

**Proposed Pool 2**

Unders. Pecos Slope Abo

<sup>11</sup> Work Type Code N	<sup>12</sup> Well Type Code G	<sup>13</sup> Cable Rotary R	<sup>14</sup> Lease Type Code S	<sup>15</sup> Ground Level Elevation 3880
<sup>16</sup> Multiple N	<sup>17</sup> Proposed Depth 4250	<sup>18</sup> Formation Abo	<sup>19</sup> Contractor United Drlg.	<sup>20</sup> Spud Date August 1, 2000

**Minimum WOC time 18 hrs. Proposed Casing and Cement Program**

Hole Size	Casing Size	Casing weight/foot	Setting Depth	Sacks of Cement	Estimated TOC
14-3/4"	11-3/4"	38#	800'	350 sxs	surface
11"	8-5/8"	24#	1800'	350 sxs	1200' surface
7-7/8"	5-1/2"	15.5#	4250'	250 sxs	3000'
				ADA	

Cement to cover all oil, gas, & water bearing zones.

<sup>22</sup> Describe the proposed program. If this application is to DEEPEN or PLUG BACK, give the data on the present productive zone and proposed new productive zone. Describe the blowout prevention program, if any. Use additional sheets if necessary. Approximately 800' surface casing will be set and cemented to shut off gravel. 11" hole will be air drilled with intermediate casing set at 1800'. 7-7/8" hole will be air drilled to TD @ 4250'. Production casing will be set at TD and cemented. The Abo will be stimulated as needed.

BOP Program: 1000 psi annular preventor will be installed on 8-5/8"; rotating head used while air drilling.

<sup>23</sup> I hereby certify that the information given above is true and complete to the best of my knowledge and belief.

Signature: Clyde C. Wheeler

Printed name: Clyde C. Wheeler

Title: Petroleum Engineer

Date: 7-11-2000

Phone: (915) 683-4816

**OIL CONSERVATION DIVISION**

Approved by: **ORIGINAL SIGNED BY TIM W. GUM  
DISTRICT II SUPERVISOR**

Title:

Approval Date: JUL 12 2000 Expiration Date: JUL 12 2001

Conditions of Approval:

Attached ☐

Notify OCD at SPUD & TIME  
to witness cementing the  
11 3/4" casing.

DISTRICT I  
P. O. Box 1980  
Hobbs, NM 88241-1980

State of New Mexico  
Energy, Minerals, and Natural Resources Department

Form C-102  
Revised 02-10-94

Instructions on back

DISTRICT II  
P. O. Drawer DD  
Artesia, NM 88211-0719

DISTRICT III  
1000 Rio Brazos Rd.  
Aztec, NM 87410

DISTRICT IV  
P. O. Box 2088  
Santa Fe, NM 87507-2088

## OIL CONSERVATION DIVISION

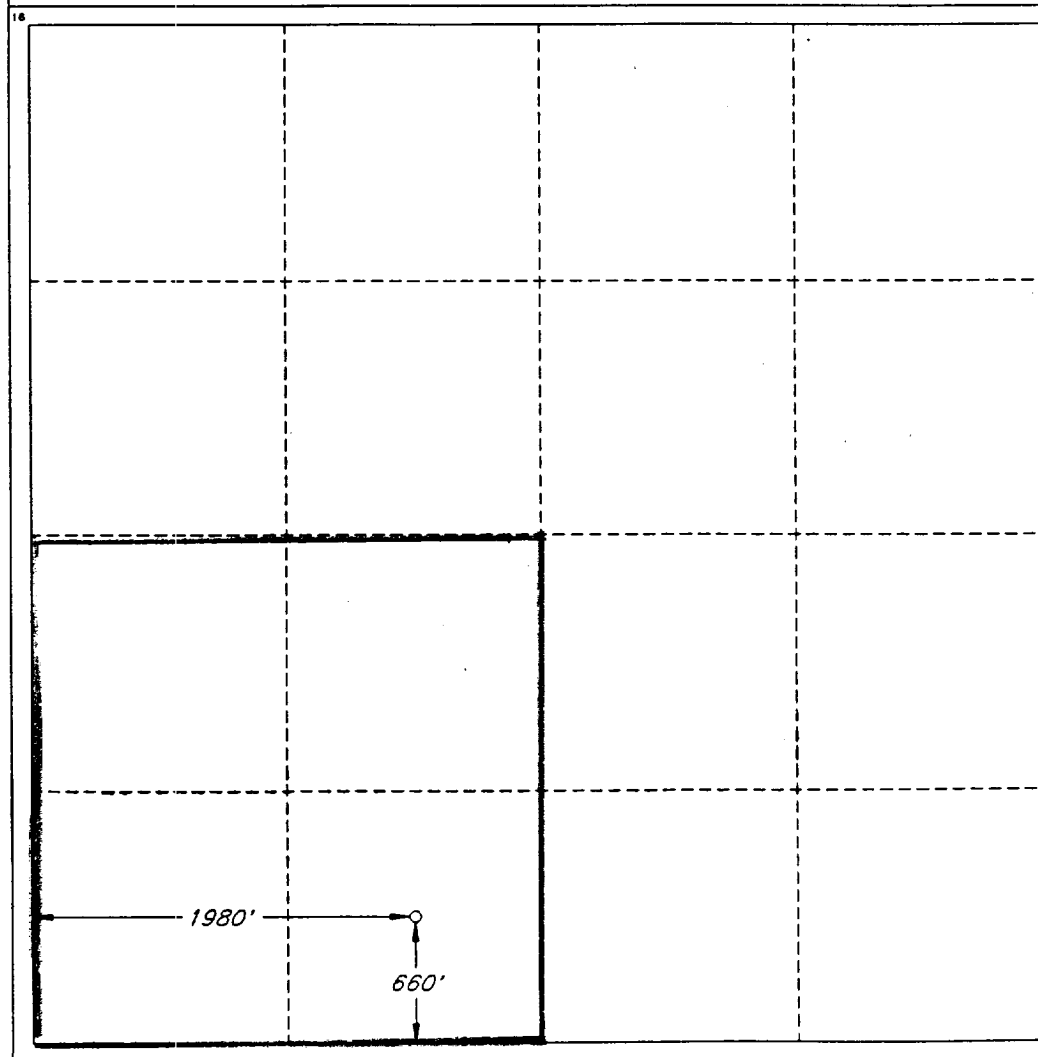
P. O. Box 2088  
Santa Fe, New Mexico 87504-2088

Submit to the Appropriate  
District Office  
State Lease - 4 copies  
Fee Lease - 3 copies

AMENDED REPORT

### WELL LOCATION AND ACREAGE DEDICATION PLAT

1 API Number		2 Pool Code		3 Pool Name Pecos Slope Abo					
4 Property Code		5 Property Name WILLOW SPRING '29' STATE						6 Well Number 1	
7 OGRID No.		8 Operator Name RELIANCE ENERGY INCORPORATED						9 Elevation 3880'	
10 SURFACE LOCATION									
UL or lot no. N	Section 29	Township 4 SOUTH	Range 25 EAST, N.M.P.M.	Lot 1da	Feet from the 660'	North/South line SOUTH	Feet from the 1980'	East/West line WEST	County CHAVES
"BOTTOM HOLE LOCATION IF DIFFERENT FROM SURFACE									
UL or lot no.	Section	Township	Range	Lot 1da	Feet from the	North/South line	Feet from the	East/West line	County
12 Dedicated Acres 160.0		13 Joint or Infill N		14 Consolidation Code		15 Order No.			
NO ALLOWABLE WELL BE ASSIGNED TO THIS COMPLETION UNTIL ALL INTERESTS HAVE BEEN CONSOLIDATED OR A NON-STANDARD UNIT HAS BEEN APPROVED BY THE DIVISION									



#### OPERATOR CERTIFICATION

I hereby certify that the information contained herein is true and complete to the best of my knowledge and belief.

Signature

Clyde C. Wheeler

Printed Name

CLYDE C. WHEELER

Title

Petroleum Engineer

Date

6-5-00

#### SURVEYOR CERTIFICATION

I hereby certify that the well location shown on this plat was plotted from field notes of actual surveys made by me or under my supervision, and that the same is true and correct to the best of my belief.

Date of Survey

MAY 3, 2000

Signature and Seal of  
Professional Surveyor

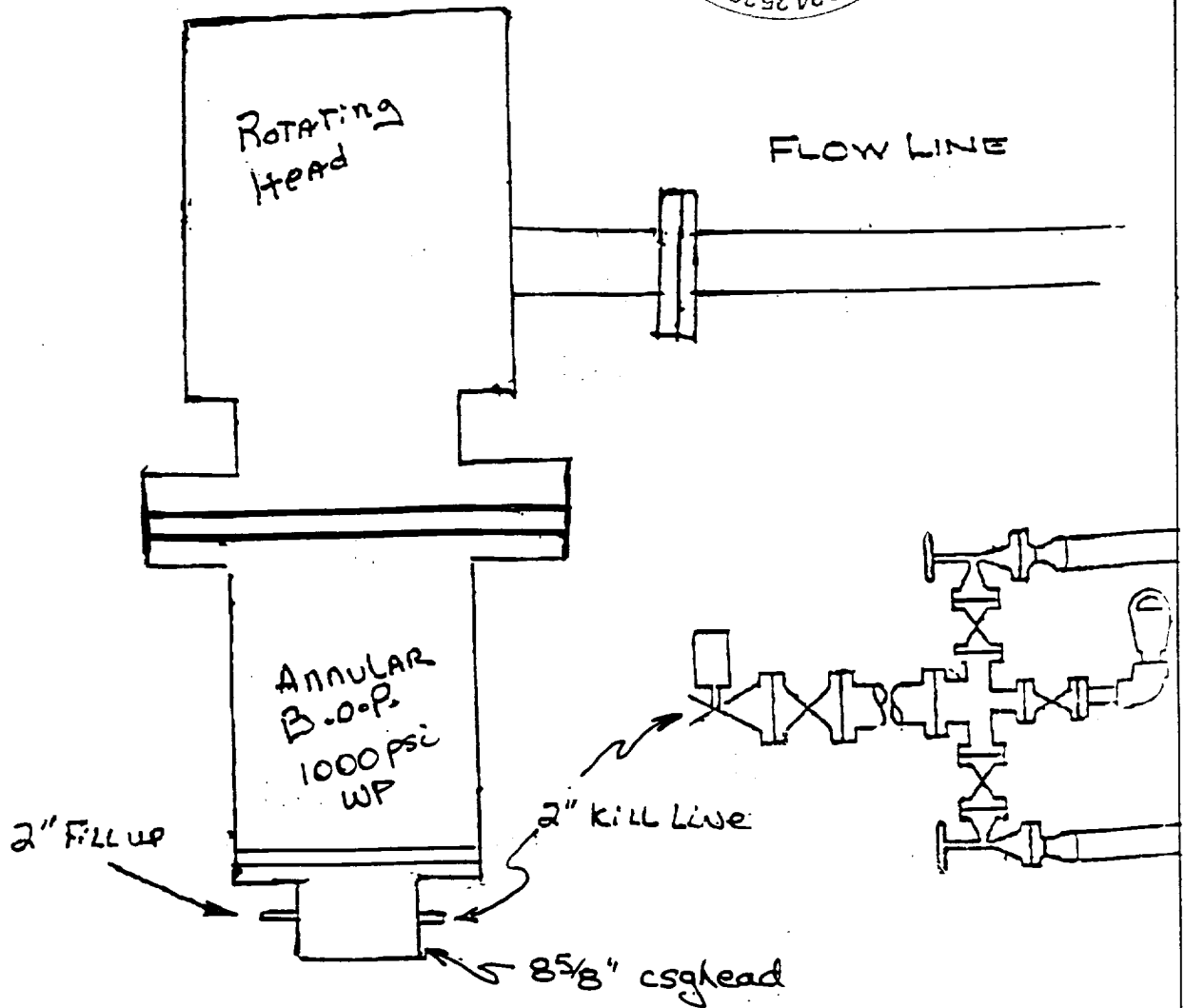
*[Signature]* 5-4-2000

Certificate No.

V. L. BEZNER

R.P.S. #7920

JOB #68945 / 200 NE / V.H.B.



Reliance Energy, Inc  
Willow Spring "29" State No. 1  
Chaves County, NM.

CCW 5/15/00