

District I
1625 N. French Dr., Hobbs, NM 88240
District II
811 South First, Artesia, NM 88210
District III
1000 Rio Brazos Road, Aztec, NM 87410
District IV
2040 South Pacheco, Santa Fe, NM 87505

State of New Mexico
Energy Minerals and Natural Resources

Oil Conservation Division
2040 South Pacheco
Santa Fe, NM 87505

Form C-101
Revised March 17, 1999

Submit to appropriate District Office
State Lease - 6 Copies
Fee Lease - 5 Copies

☐ AMENDED REPORT

APPLICATION FOR PERMIT TO DRILL, RE-ENTER, DEEPEN, PLUGBACK, OR ADD A ZONE

Operator Name and Address Reliance Energy, Inc. P.O. Box 10946, Midland, TX 79702		OGRIID Number 149441
Property Code 25855	Property Name Willow Spring "32" State	API Number 30-005-63270
		Well No. 21

UL or lot no.	Section	Township	Range	Lot Idn	Feet from the	North/South line	Feet from the	East/West line	County
N	32	4S	25E		660	South	1980	West	Chaves

Proposed Bottom Hole Location If Different From Surface

UL or lot no.	Section	Township	Range	Lot Idn	Feet from the	North/South line	Feet from the	East/West line	County

Proposed Pool 1 Undes. Pecos Slope; Abo	Proposed Pool 2
--	-----------------

Work Type Code N	Well Type Code G	Lease Rotary R	Lease Type Code S	Ground Level Elevation 3826
Material N	Proposed Depth 4250'	Lease Location Abo	Completions unknown	Spud Date August 15, 2000

Minimum WOC time 28 hrs Proposed Casing and Cement Program

Hole Size	Casing Size	Casing weight/foot	Setting Depth	Sacks of Cement	Estimated TOC
14-3/4	11-3/4	42#	900'	450 sxs	surface
11	8-5/8	24#	1900'	450 sxs	1200'
7-7/8	5-1/2	15.5#	4250'	500 sxs	3000'

Describe the proposed program. If this application is to DEEPEN or PLUG BACK, give the data on the present productive zone and proposed new productive zone.

Describe the blowout prevention program, if any. Use additional sheets if necessary. Approximately 900' surface casing will be set and cemented to shut off gravel and cavings. 11" hole will be air drilled with intermediate casing at approximately 1900'. 7-7/8" hole will be drilled to TD w/air; production casing will be set and cemented at TD. The Abo will be stimulated as needed.

BOP Program: 1000# BOP installed on 8-5/8" and tested daily; rotating head while air drilling.

I hereby certify that the information given above is true and complete to the best of my knowledge and belief.		OIL CONSERVATION DIVISION	
Signature: <u>Clyde C. Wheeler</u>		Approved by: ORIGINAL SIGNED BY TIM W. GUM	
Printed name: Clyde C. Wheeler		DISTRICT II SUPERVISOR <u>B60</u>	
Title: Petroleum Engineer		Title:	
Date: July 25, 2000		Approval Date: <u>JUL 27 2000</u> Expiration Date: <u>JUL 27 2001</u>	
Phone: (915) 683-4816		Conditions of Approval:	
		Attached <input type="checkbox"/>	

Notify OCD at SPUD & TIME
to witness cementing the
11 5/4" casing.

P. O. Box 1980
Hobbs, NM 88241-1980

State of New Mexico
Energy, Minerals, and Natural Resources Department

Form 0-102
Revised 02-10-94
Instructions on back

DISTRICT II
P. O. Drawer DD
Artesia, NM 88211-0719

DISTRICT III
1000 Rio Brazos Rd.
Aztec, NM 87410

DISTRICT IV
P. O. Box 2088
Santa Fe, NM 87507-2088

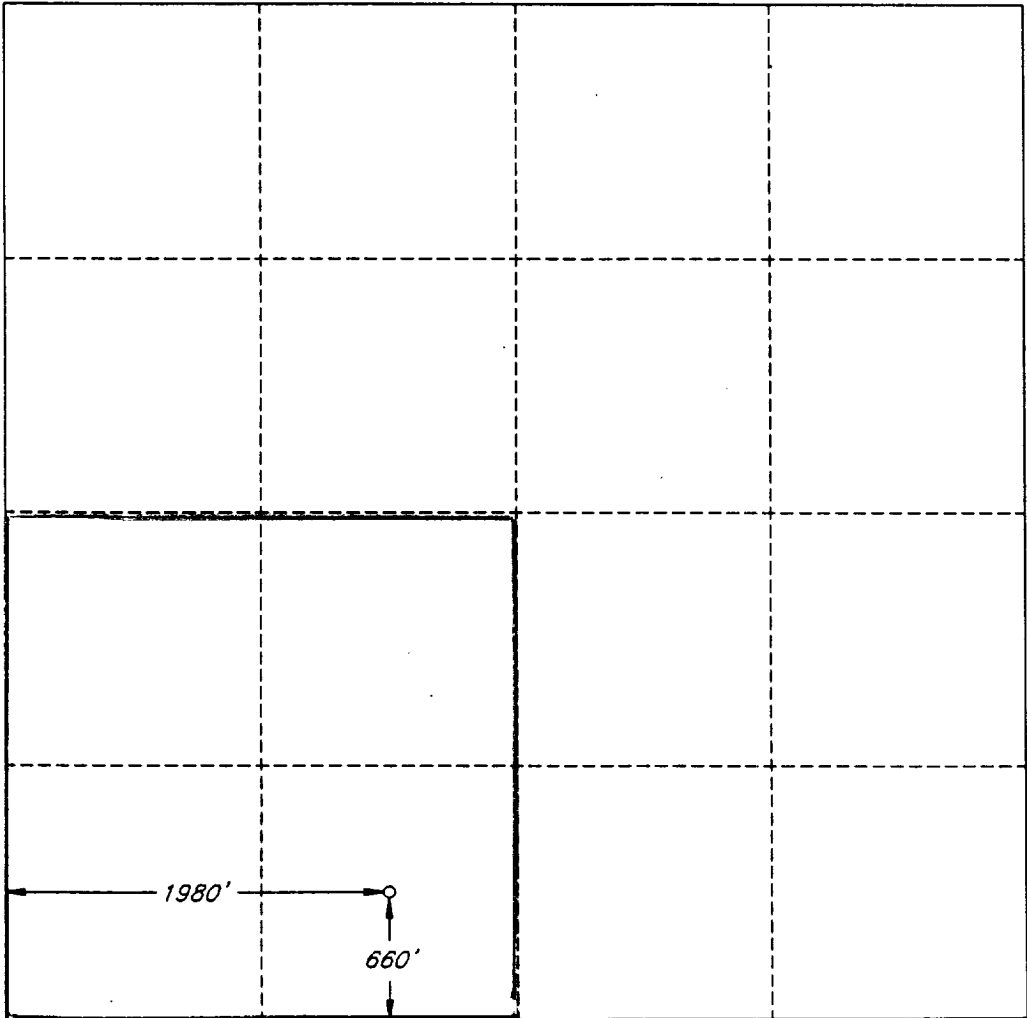
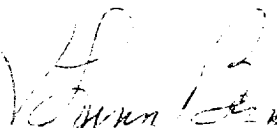
OIL CONSERVATION DIVISION

P. O. Box 2088
Santa Fe, New Mexico 87504-2088

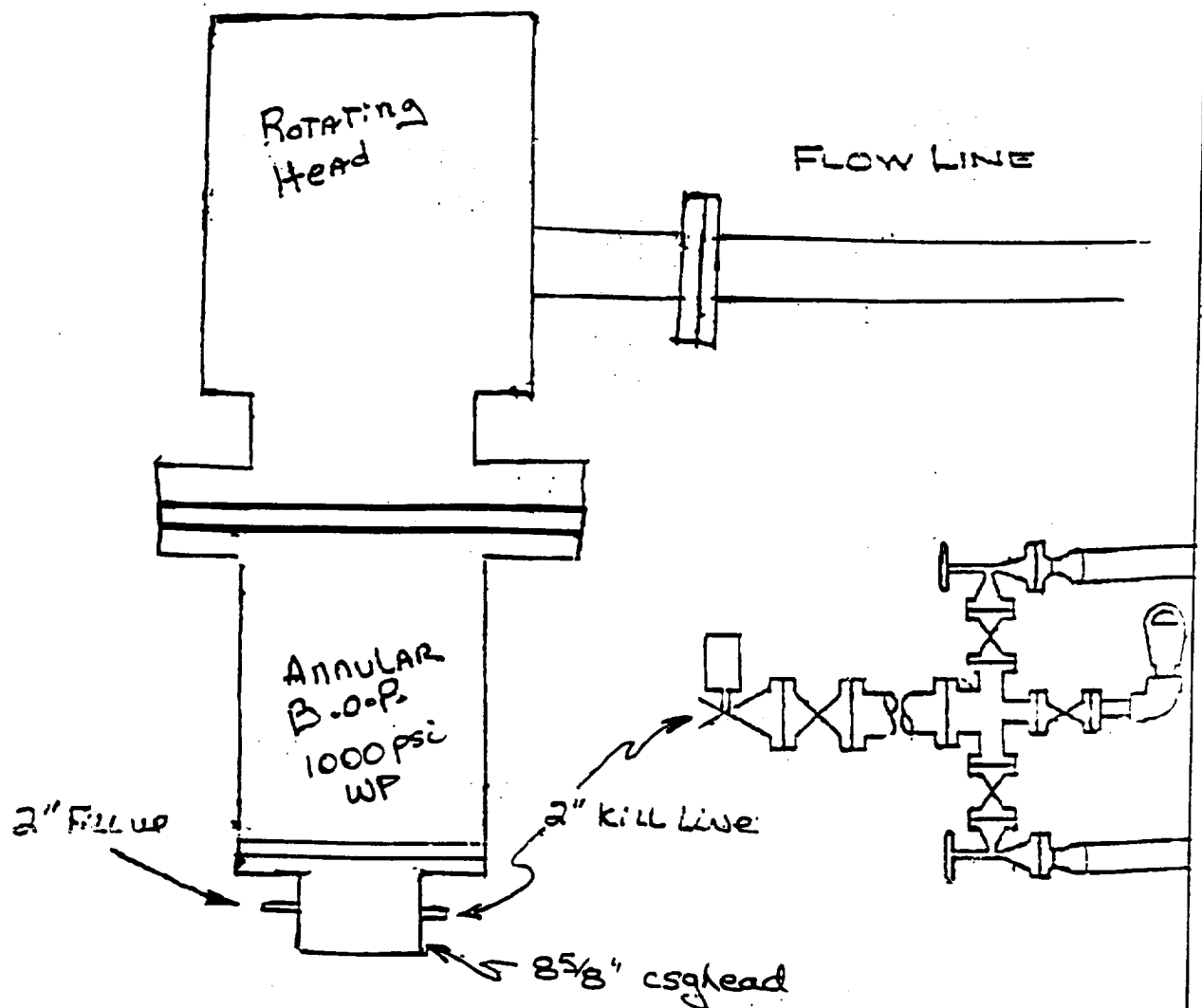
Submit to the Appropriate
District Office
State Lease - 4 copies
Fee Lease - 3 copies

☐ AMENDED REPORT

WELL LOCATION AND ACREAGE DEDICATION PLAT

1 API Number		2 Pool Code		3 Pool Name Pecos Slope Abo					
4 Property Code 25855		5 Property Name WILLOW SPRINGS '32' STATE						6 Well Number 1	
7 OGRID No.		8 Operator Name RELIANCE ENERGY, INC.						9 Elevation 3828'	
10 SURFACE LOCATION									
UL or lot no. N	Section 32	Township 4 SOUTH	Range 25 EAST, N.M.P.M.	Lot Ida	Feet from the 660'	North/South line SOUTH	Feet from the 1980'	East/West line WEST	County CHAVES
"BOTTOM HOLE LOCATION IF DIFFERENT FROM SURFACE									
UL or lot no.	Section	Township	Range	Lot Ida	Feet from the	North/South line	Feet from the	East/West line	County
12 Dedicated Acres 160.0		13 Joint or Infill N		14 Consolidation Code		15 Order No.			
NO ALLOWABLE WELL BE ASSIGNED TO THIS COMPLETION UNTIL ALL INTERESTS HAVE BEEN CONSOLIDATED OR A NON-STANDARD UNIT HAS BEEN APPROVED BY THE DIVISION									
						OPERATOR CERTIFICATION I hereby certify that the information contained herein is true and complete to the best of my knowledge and belief.			
						Signature Clyde C. Wheeler			
						Printed Name CLYDE C. WHEELER			
						Title Petroleum Engineer			
						Date 7-25-00			
						SURVEYOR CERTIFICATION I hereby certify that the well location shown on this plat was plotted from field notes of actual surveys made by me or under my supervision, and that the same is true and correct to the best of my belief.			
						Date of Survey JULY 17, 2000			
						Signature and Seal of Professional Surveyor 			
						Certificate No. V. L. BEZNER R.P.S. #7920			
						JOB #70355 / 200 NE / V.H.B.			

RECEIVED
OCD - ARTESIA



Reliance Energy, Inc.
Willow Spring "32" State No. 1
Chaves County, NM.

CCW 5/15/00