

District I  
1625 N. French Dr., Hobbs, NM 88240  
District II  
811 South First, Artesia, NM 88210  
District III  
1000 Rio Brazos Road, Aztec, NM 87410  
District IV  
2040 South Pacheco, Santa Fe, NM 87505

State of New Mexico  
Energy Minerals and Natural Resources

Oil Conservation Division  
2040 South Pacheco  
Santa Fe, NM 87505

Form C-101  
Revised March 17, 1999

Submit to appropriate District Office  
State Lease - 6 Copies  
Fee Lease - 5 Copies  
☐ AMENDED REPORT

APPLICATION FOR PERMIT TO DRILL, RE-ENTER, DEEPEN, PLUGBACK, OR ADD A ZONE

<sup>1</sup> Operator Name and Address Reliance Energy, Inc. P.O. Box 10946, Midland, Texas 79702		<sup>2</sup> OGRID Number 149441
<sup>4</sup> Property Code 26570	<sup>5</sup> Property Name Willow Spring "20" State	<sup>3</sup> API Number 30-008-63271
		<sup>6</sup> Well No. 1

<sup>7</sup> Surface Location									
UL or lot no.	Section	Township	Range	Lot Idn	Feet from the	North/South line	Feet from the	East/West line	County
B	20	4S	25E		660'	North	1980'	East	Chaves

<sup>8</sup> Proposed Bottom Hole Location If Different From Surface									
UL or lot no.	Section	Township	Range	Lot Idn	Feet from the	North/South line	Feet from the	East/West line	County
<sup>9</sup> Proposed Pool 1 Pecos Slope Abo						<sup>10</sup> Proposed Pool 2			

<sup>11</sup> Work Type Code N	<sup>12</sup> Well Type Code G	<sup>13</sup> Cable Rotary R	<sup>14</sup> Lease Type Code S	<sup>15</sup> Ground Level Elevation 3889
<sup>16</sup> Multiple N	<sup>17</sup> Proposed Depth 4250	<sup>18</sup> Formation Abo	<sup>19</sup> Contractor Unknown	<sup>20</sup> Spud Date August 20, 2000

Minimum WOC time 8 hrs. <sup>21</sup> Proposed Casing and Cement Program

Hole Size	Casing Size	Casing weight/foot	Setting Depth	Sacks of Cement	Estimated TOC
14-3/4"	11-3/4"	42#	900'	350 sxs	surface
11"	8-5/8"	24#	1900'	350 sxs	1200'
7-7/8"	5-1/2"	15.5#	4250'	350 sxs	3000'

<sup>22</sup> Describe the proposed program. If this application is to DEEPEN or PLUG BACK, give the data on the present productive zone and proposed new productive zone.

Describe the blowout prevention program, if any. Use additional sheets if necessary. Approximately 900' surface casing will be set and cemented to shut off gravel and cavings. 11" hole will be air drilled with intermediate casing at approximately 1900' 7-7/8" hole will be drilled to TD w/air; production casing will be set and cemented at TD. The Abo will be stimulated as needed.

BOP Program: 1000# BOP installed on 8-5/8" and tested daily; rotating head while air drilling.

<sup>23</sup> I hereby certify that the information given above is true and complete to the best of my knowledge and belief.		OIL CONSERVATION DIVISION	
Signature: <i>Peggy Abernathy for</i>		Approved by: ORIGINAL SIGNED BY TIM W. GUM DISTRICT II SUPERVISOR	BGX
Printed name: Clyde C. Wheeler		Title:	
Title: Petroleum Engineer		Approval Date: AUG 15 2000	Expiration Date: AUG 15 2001
Date: August 8, 2000	Phone: (915) 683-4816	Conditions of Approval:	
		Attached <input type="checkbox"/>	

Notify OCD at SPUD & TIME  
to witness cementing the  
1 1/2" casing.

DISTRICT I  
P. O. Box 1980  
Hobbs, NM 88241-1980

State of New Mexico  
Energy, Minerals, and Natural Resources Department

Form C-102  
Revised 02-10-94  
Instructions on back

DISTRICT II  
P. O. Drawer DD  
Artesia, NM 88211-0719

DISTRICT III  
1000 Rio Brazos Rd.  
Aztec, NM 87410

DISTRICT IV  
P. O. Box 2088  
Santa Fe, NM 87507-2088

OIL CONSERVATION DIVISION  
P. O. Box 2088  
Santa Fe, New Mexico 87504-2088

Submit to the Appropriate  
District Office  
State Lease - 4 copies  
Fee Lease - 3 copies

☐ AMENDED REPORT

WELL LOCATION AND ACREAGE DEDICATION PLAT

1 API Number		2 Pool Code		3 Pool Name Pecos Slope Abo		
4 Property Code		5 Property Name WILLOW SPRINGS '20' STATE			6 Well Number 1	
7 OGRID No.		8 Operator Name RELIANCE ENERGY, INC.			9 Elevation 3889'	

10 SURFACE LOCATION

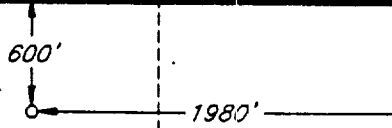
UL or lot no. B	Section 20	Township 4 SOUTH	Range 25 EAST, N.M.P.M.	Lot Ida	Feet from the 600'	North/South line NORTH	Feet from the 1980'	East/West line EAST	County CHAVES
--------------------	---------------	---------------------	----------------------------	---------	-----------------------	---------------------------	------------------------	------------------------	------------------

11 BOTTOM HOLE LOCATION IF DIFFERENT FROM SURFACE

UL or lot no.	Section	Township	Range	Lot Ida	Feet from the	North/South line	Feet from the	East/West line	County
---------------	---------	----------	-------	---------	---------------	------------------	---------------	----------------	--------

12 Dedicated Acres 160.0	13 Joint or Infill N	14 Consolidation Code	15 Order No.
-----------------------------	-------------------------	-----------------------	--------------

NO ALLOWABLE WELL BE ASSIGNED TO THIS COMPLETION UNTIL ALL INTERESTS HAVE BEEN CONSOLIDATED OR A NON-STANDARD UNIT HAS BEEN APPROVED BY THE DIVISION

OPERATOR CERTIFICATION

I hereby certify that the information contained herein is true and complete to the best of my knowledge and belief.

Signature  
Clyde C. Wheeler  
Printed Name  
CLYDE C. WHEELER  
Title  
Petroleum Engineer  
Date  
August 1, 2000

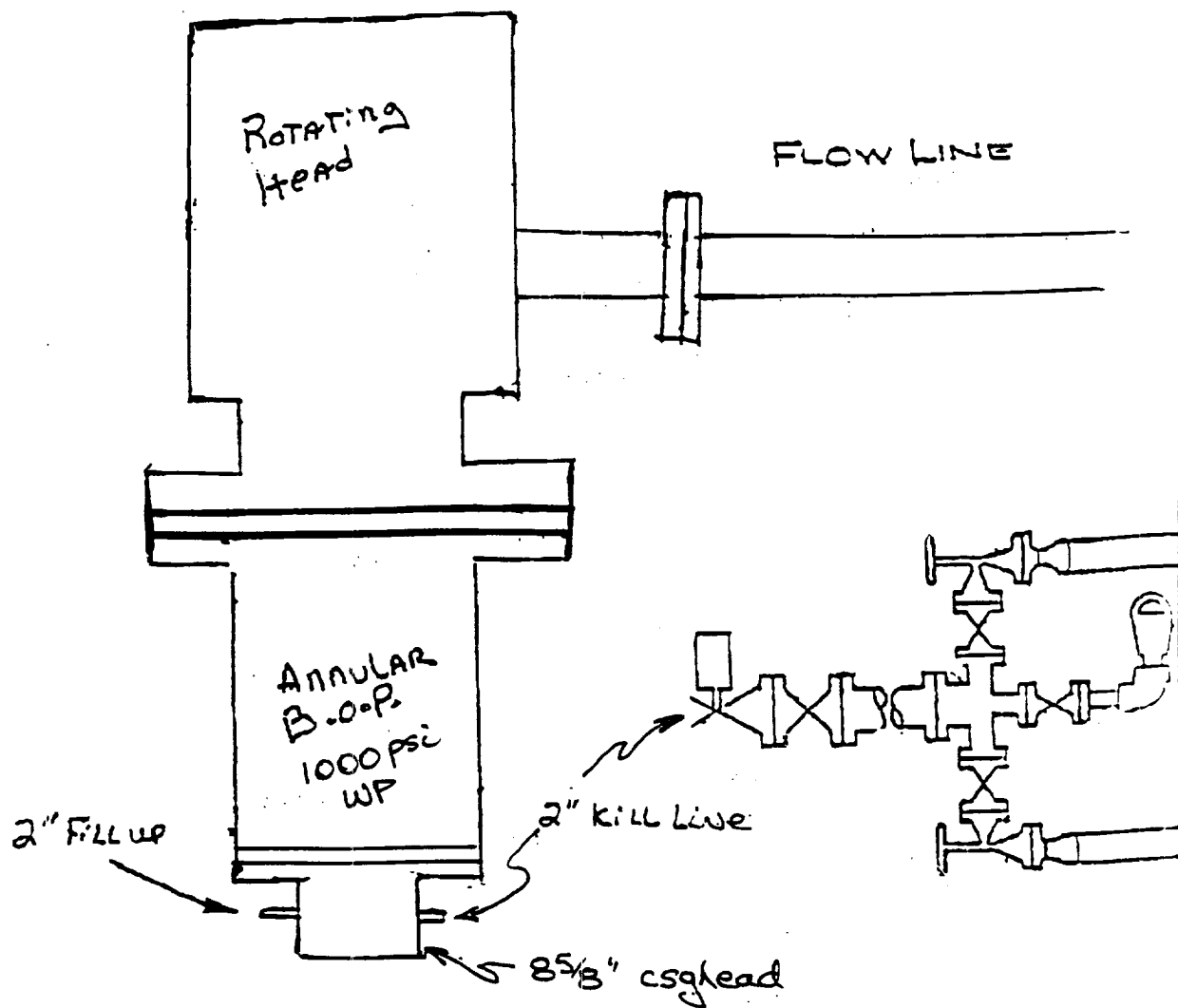
SURVEYOR CERTIFICATION

I hereby certify that the well location shown on this plat was plotted from field notes of actual surveys made by me or under my supervision, and that the same is true and correct to the best of my belief.

Date of Survey  
JULY 17, 2000

Signature and Seal of  
Professional Surveyor

Certificate No.  
V. E. BEZNER R.P.S. #7920  
JOB #70356 / 200 NE / V.H.B.



Reliance Energy, Inc.  
Willow Spring "20" State No. 1  
Chaves County, NM.

CCW 5/15/00