

District I
1625 N. French Dr., Hobbs, NM 88240
District II
811 South First, Artesia, NM 88210
District III
1000 Rio Brazos Road, Aztec, NM 87410
District IV
2040 South Pacheco, Santa Fe, NM 87505

State of New Mexico
Energy Minerals and Natural Resources

Oil Conservation Division
2040 South Pacheco
Santa Fe, NM 87505

Form C-101
Revised March 17, 1999

Submit to appropriate District Office
State Lease - 6 Copies
Fee Lease - 5 Copies

☐ AMENDED REPORT

APPLICATION FOR PERMIT TO DRILL, RE-ENTER, DEEPEN, PLUGBACK, OR ADD A ZONE

¹ Operator Name and Address Reliance Energy, Inc. P.O. Box 10946, Midland, Texas 79702		² OGRID Number 149441
		³ API Number 30 - 005 - 63272
⁴ Property Code 26571	⁵ Property Name Willow Spring "21" State	⁶ Well No. 1

⁷ Surface Location									
UL or lot no.	Section	Township	Range	Lot Idn	Feet from the	North/South line	Feet from the	East/West line	County
D	21	4S	25E		660'	North	600'	West	Chaves

⁸ Proposed Bottom Hole Location If Different From Surface									
UL or lot no.	Section	Township	Range	Lot Idn	Feet from the	North/South line	Feet from the	East/West line	County
⁹ Proposed Pool 1 Pecos Slope Abo					¹⁰ Proposed Pool 2				

¹¹ Work Type Code N	¹² Well Type Code G	¹³ Cable Rotary R	¹⁴ Lease Type Code S	¹⁵ Ground Level Elevation 3876
¹⁶ Multiple N	¹⁷ Proposed Depth 4250	¹⁸ Formation Abo	¹⁹ Contractor Unknown	²⁰ Spud Date August 20, 2000

Minimum WOC time 18 hrs. ²¹ Proposed Casing and Cement Program

Hole Size	Casing Size	Casing weight/foot	Setting Depth	Sacks of Cement	Estimated TOC
14-3/4"	11-3/4"	42#	900'	350 sxs	surface
11"	8-5/8"	24#	1900'	350 sxs	1200'
7-7/8"	5-1/2"	15.5#	4250'	350 sx	3000'

²² Describe the proposed program. If this application is to DEEPEN or PLUG BACK, give the data on the present productive zone and proposed new productive zone.

Describe the blowout prevention program, if any. Use additional sheets if necessary. Approximately 900' surface casing will be set and cemented to shut off gravel and cavings. 11" hole will be air drilled with intermediate casing at approximately 1900'. 7-7/8" hole will be drilled to TD w/air; production casing will be set and cemented at TD. The Abo will be stimulated as needed.

BOP Program: 1000# BOP installed on 8-5/8" and tested daily; rotating head while air drilling.

²³ I hereby certify that the information given above is true and complete to the best of my knowledge and belief.		OIL CONSERVATION DIVISION	
Signature: <i>Peggy Abernathy (for)</i>		Approved by: ORIGINAL SIGNED BY TIM W. GUM	
Printed name: Clyde C. Wheeler		Title: DISTRICT II SUPERVISOR	
Title: Petroleum Engineer		Approval Date: AUG 15 2000 Expiration Date: AUG 15 2001	
Date: August 8, 2000	Phone: (915) 683-4816	Conditions of Approval: Attached <input type="checkbox"/>	

Notify OCD at SPUD & TIME
to witness cementing the
11 3/4" casing.

DISTRICT I
P. O. Box 1980
Hobbs, NM 88241-1980

State of New Mexico
Department of Energy, Minerals, and Natural Resources

Form C-102
Revised 02-10-94

Instructions on back

DISTRICT II
P. O. Drawer DD
Artesia, NM 88211-0719

Submit to the Appropriate
District Office
State Lease - 4 copies
Fee Lease - 3 copies

DISTRICT III
1000 Rio Brazos Rd.
Aztec, NM 87410

OIL CONSERVATION DIVISION
P. O. Box 2088
Santa Fe, New Mexico 87504-2088

☐ AMENDED REPORT

DISTRICT IV
P. O. Box 2088
Santa Fe, NM 87507-2088

WELL LOCATION AND ACREAGE DEDICATION PLAT

1 API Number		2 Pool Code		3 Pool Name Pecos Slope Abo			
4 Property Code		5 Property Name WILLOW SPRINGS '21' STATE				6 Well Number 1	
7 OGRID No.		8 Operator Name RELIANCE ENERGY, INC.				9 Elevation 3878'	

10 SURFACE LOCATION

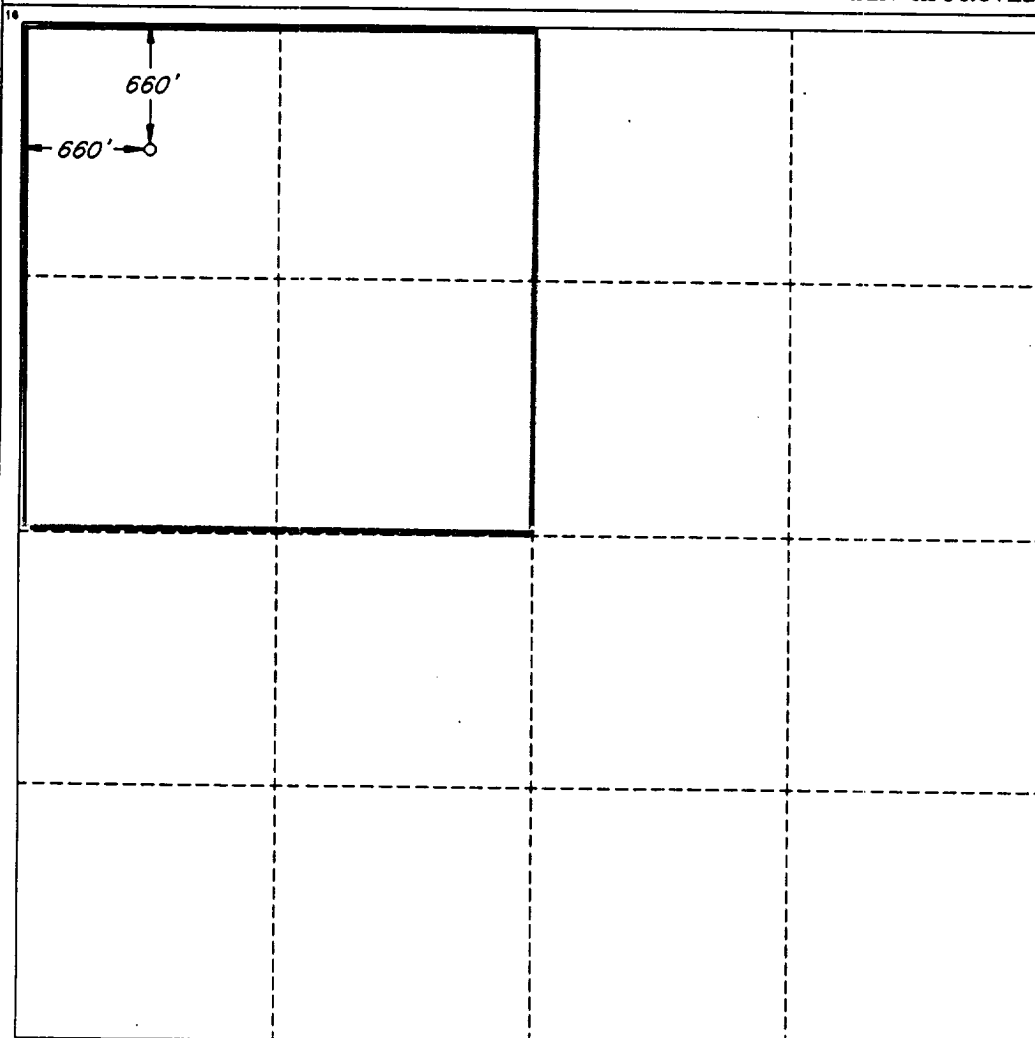
UL or lot no. D	Section 21	Township 4 SOUTH	Range 25 EAST, N.M.P.M.	Lot Ida	Feet from the 660'	North/South line NORTH	Feet from the 660'	East/West line WEST	County CHAVES
--------------------	---------------	---------------------	----------------------------	---------	-----------------------	---------------------------	-----------------------	------------------------	------------------

11 BOTTOM HOLE LOCATION IF DIFFERENT FROM SURFACE

UL or lot no.	Section	Township	Range	Lot Ida	Feet from the	North/South line	Feet from the	East/West line	County
---------------	---------	----------	-------	---------	---------------	------------------	---------------	----------------	--------

12 Dedicated Acres 160.0	13 Joint or Infill N	14 Consolidation Code	15 Order No.
-----------------------------	-------------------------	-----------------------	--------------

NO ALLOWABLE WELL BE ASSIGNED TO THIS COMPLETION UNTIL ALL INTERESTS HAVE BEEN CONSOLIDATED OR A NON-STANDARD UNIT HAS BEEN APPROVED BY THE DIVISION



OPERATOR CERTIFICATION

I hereby certify that the information contained herein is true and complete to the best of my knowledge and belief.

Signature
Clyde C. Wheeler
Printed Name
CLYDE C. WHEELER
Title
Petroleum Engineer
Date
August 1, 2000

SURVEYOR CERTIFICATION

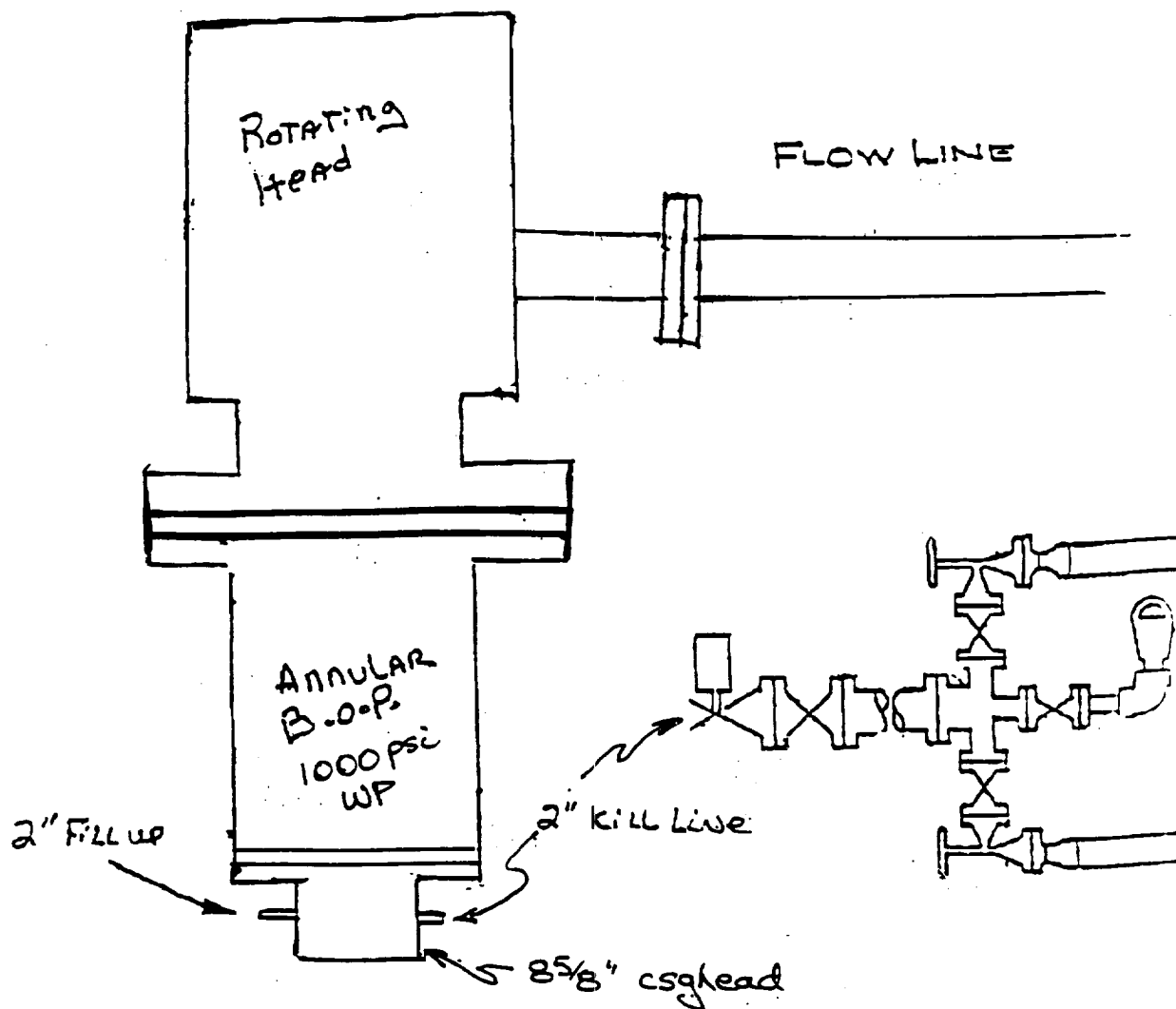
I hereby certify that the well location shown on this plat was plotted from field notes of actual surveys made by me or under my supervision, and that the same is true and correct to the best of my belief.

Date of Survey
JULY 17, 2000

Signature and Seal of
Professional Surveyor

V. L. Bezner
Certificate No.
V. L. BEZNER R.P.S. #7920

JOB #70357 / 200 NE / V.H.B.



Reliance Energy, Inc.
 Willow Spring "21" State No. 1
 Chaves County, NM.

CCW 5/15/00