

District I
1625 N. French Dr., Hobbs, NM 83240
District II
811 South First, Artesia, NM 88210
District III
1000 Rio Brazos Road, Aztec, NM 87410
District IV
2040 South Pacheco, Santa Fe, NM 87505

State of New Mexico
Energy Minerals and Natural Resources

Oil Conservation Division
2040 South Pacheco
Santa Fe, NM 87505

Form C-101
Revised March 17, 1999
Submit to appropriate District Office
State Lease 3 Copies
Fee Lease 3 Copies
 AMENDED REPORT

RECEIVED
OCD - ARTESIA

Handwritten: 01st BUM 52

APPLICATION FOR PERMIT TO DRILL, RE-ENTER, DEEPEN, PLUGBACK, OR ADD A ZONE

| | | |
|---|--|---|
| ¹ Operator Name and Address Reliance Energy, Inc. P.O. Box 10946, Midland, Texas 79702 | | ² OCCRLI Number 149441 |
| ⁴ Property Code 26781 | | ³ API Number 30 - 005 - 63290 |
| ⁵ Property Name Willow Spring "23" State | | ⁶ Well No. 1 |

| ⁷ Surface Location | | | | | | | | | |
|-------------------------------|---------|----------|-------|---------|---------------|------------------|---------------|----------------|--------|
| UL or lot no. | Section | Township | Range | Lot Idn | Feet from the | North/South line | Feet from the | East/West line | County |
| F | 23 | 4S | 25E | | 1980 | North | 1980 | West | Chaves |

| ⁸ Proposed Bottom Hole Location If Different From Surface | | | | | | | | | |
|---|---------|----------|-------|---------|-------------------------------|------------------|---------------|----------------|--------|
| UL or lot no. | Section | Township | Range | Lot Idn | Feet from the | North/South line | Feet from the | East/West line | County |
| ⁹ Proposed Pool 1 Wild cat Recess Slope Abo | | | | | ¹⁰ Proposed Pool 2 | | | | |

| | | | | |
|-----------------------------------|--------------------------------------|---------------------------------|-------------------------------------|---|
| ¹¹ Work Type Code N | ¹² Well Type Code G | ¹³ Cable Rotary R | ¹⁴ Lease Type Code S | ¹⁵ Ground Level Elevation 3833' |
| ¹⁶ Multiple N | ¹⁷ Proposed Depth 4250 | ¹⁸ Formation Abo | ¹⁹ Contractor Can-Tex | ²⁰ Spud Date 10/23/2000 |

Minimum WOC time 18 hrs ²¹ Proposed Casing and Cement Program

| Hole Size | Casing Size | Casing weight/foot | Setting Depth | Sacks of Cement | Estimated TOC |
|---|-------------|--------------------|---------------|-----------------|----------------|
| 14-3/4" | 11-3/4" | 42# | 900' | 350 | surface |
| 11" | 8-5/8" | 24# | 1900' | 350 | 1200' Tie back |
| 7-7/8" | 5-1/2" | 15.5# | 4250' | 350 | 3000' |
| * Tie back @ 200' above 11 3/4" casing B6R | | | | | |

²² Describe the proposed program. If this application is to DEEPEN or PLUG BACK, give the data on the present productive zone and proposed new productive zone. Describe the blowout prevention program, if any. Use additional sheets if necessary. Approximately 900' surface casing will be set and cemented to shut off gravel. 11" hole will be air drilled with intermediate casing set at 1900'. 7-7/8" hole will be air drilled to TD @ 4250'. Production casing will be set at TD and cemented. The Abo will be stimulated as needed:

BOP Program: 3000' psi annular preventor will be installed on 8-5/8"; rotating head used while air drilling.

| | | | |
|--|--|------------------------------------|---------------------------------------|
| ²³ I hereby certify that the information given above is true and complete to the best of my knowledge and belief. | | OIL CONSERVATION DIVISION | |
| Signature: <i>Clyde C. Wheeler</i> | Printed name: Clyde C. Wheeler | Approved by: <i>Signe W. Green</i> | Title: <i>District Supervisor</i> BGA |
| Title: Petroleum Engineer | Date: 10/5/2000 | Approval Date: OCT 10 2000 | Expiration Date: OCT 10 2001 |
| Phone: (915) 683-4816 | Conditions of Approval: Attached <input type="checkbox"/> | | |

Notify OCD at SPUD & TIME to witness cementing the 11 3/4" casing.

DISTRICT I
P. O. Box 1980
Hobbs, NM 88241-1980

State of New Mexico
Ene Minerals, and Natural Resources Department

Form C-102
Revised 02-10-94

Instructions on back

DISTRICT II
P. O. Drawer DD
Artesia, NM 88211-0719

OIL CONSERVATION DIVISION
P. O. Box 2088
Santa Fe, New Mexico 87504-2088

Submit to the Appropriate
District Office
State Lease - 4 copies
Fee Lease - 3 copies

DISTRICT III
1000 Rio Brazos Rd.
Aztec, NM 87410

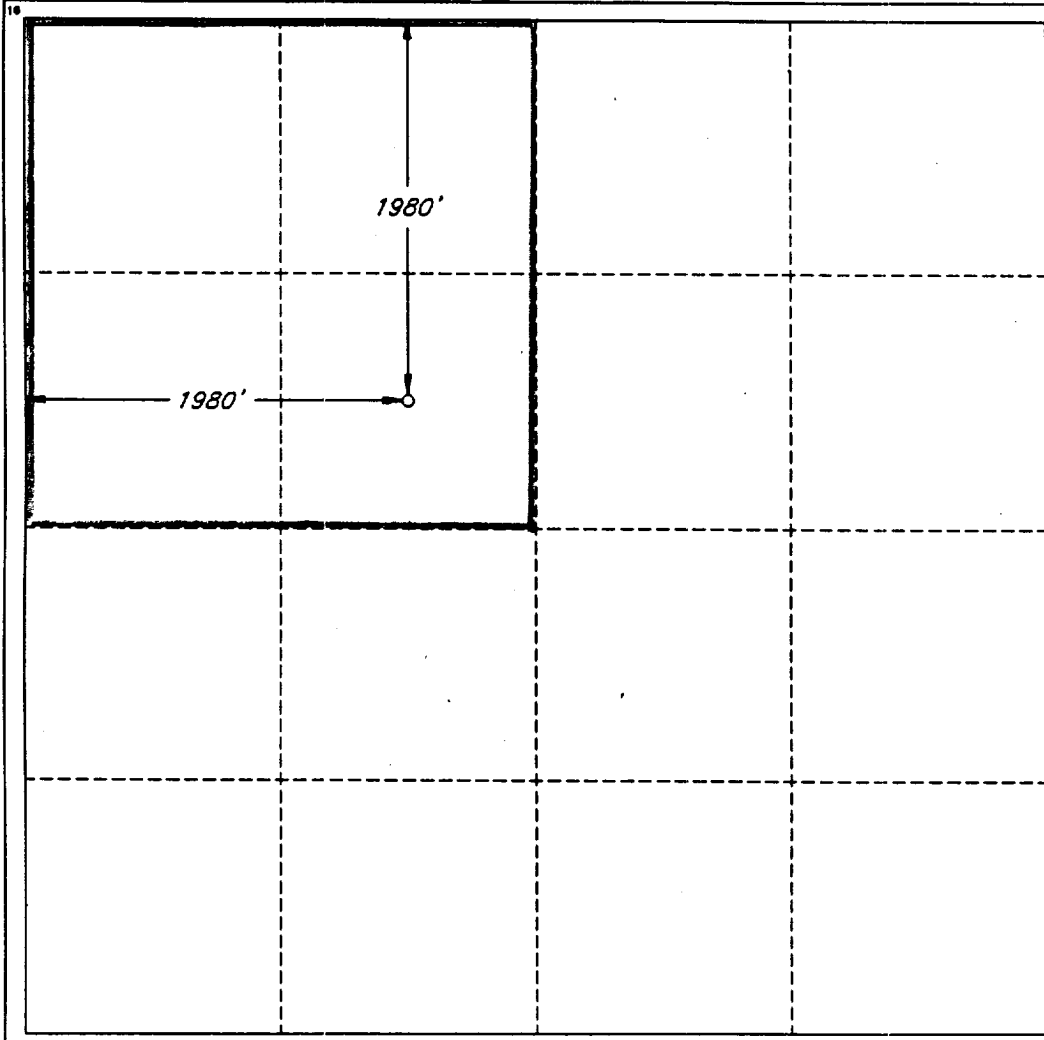
AMENDED REPORT

DISTRICT IV
P. O. Box 2088
Santa Fe, NM 87507-2088

WELL LOCATION AND ACREAGE DEDICATION PLAT

| | | | | | | | | | |
|---|---------------|--|----------------------------|--------------------------------|------------------------|---------------------------|------------------------|------------------------|------------------|
| 1 API Number | | 2 Pool Code | | 3 Pool Name Pecos Slope Abo | | | | | |
| 4 Property Code | | 5 Property Name WILLOW SPRINGS '23' STATE | | | | | 6 Well Number 1 | | |
| 7 OGRID No. | | 8 Operator Name RELIANCE ENERGY, INC. | | | | | 9 Elevation 3833' | | |
| 10 SURFACE LOCATION | | | | | | | | | |
| UL or lot no. F | Section 23 | Township 4 SOUTH | Range 25 EAST, N.M.P.M. | Lot Ida | Feet from the 1980' | North/South line NORTH | Feet from the 1980' | East/West line WEST | County CHAVES |
| "BOTTOM HOLE LOCATION IF DIFFERENT FROM SURFACE | | | | | | | | | |
| UL or lot no. | Section | Township | Range | Lot Ida | Feet from the | North/South line | Feet from the | East/West line | County |
| 12 Dedicated Acres 160.0 | | 13 Joint or Infill N | | 14 Consolidation Code | | 15 Order No. | | | |

NO ALLOWABLE WELL BE ASSIGNED TO THIS COMPLETION UNTIL ALL INTERESTS HAVE BEEN CONSOLIDATED OR A NON-STANDARD UNIT HAS BEEN APPROVED BY THE DIVISION



OPERATOR CERTIFICATION
I hereby certify that the information contained herein is true and complete to the best of my knowledge and belief.

Signature
Clyde C. Wheeler

Printed Name
CLYDE C. WHEELER

Title
Petroleum Engineer

Date
Oct. 4, 2000

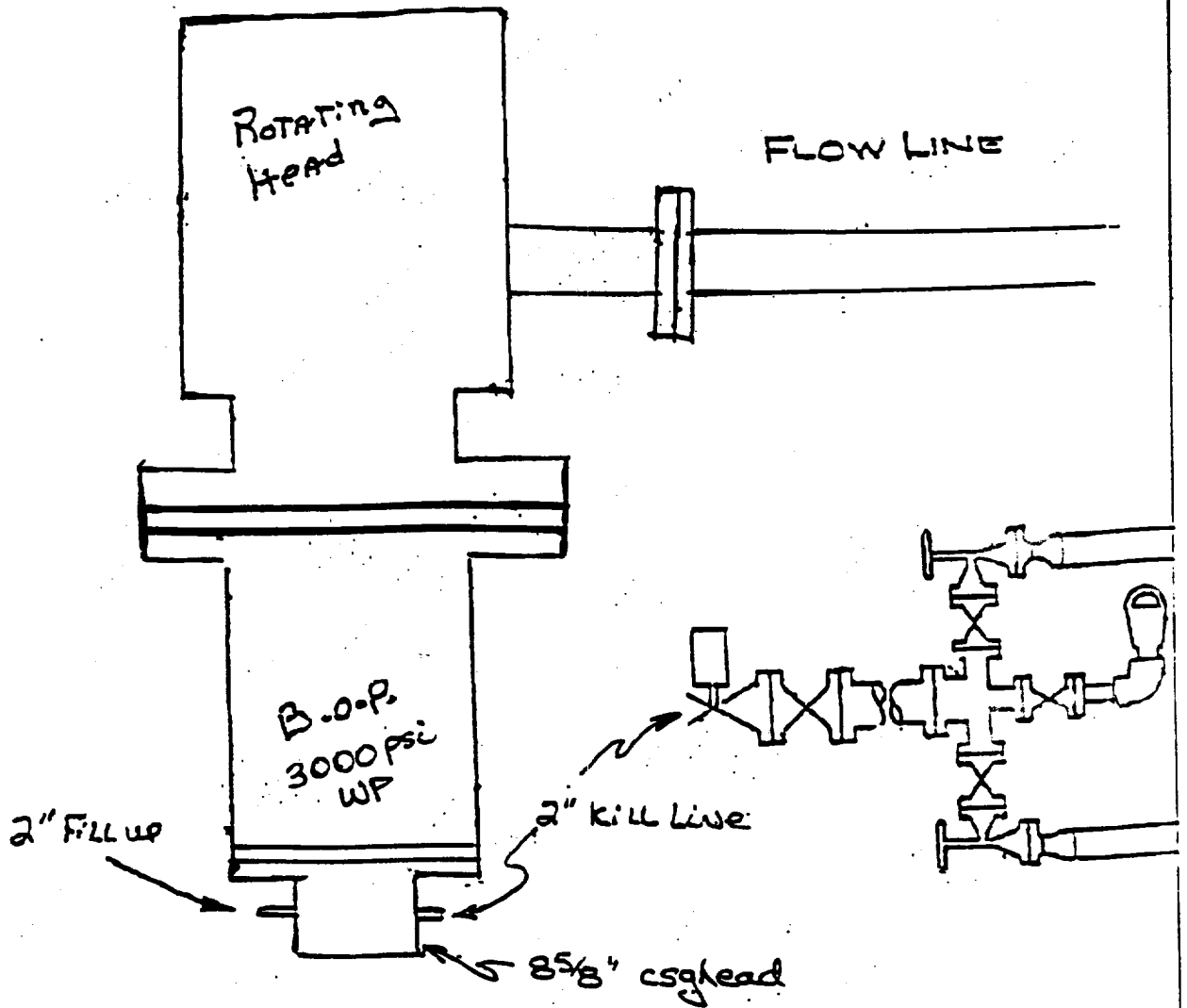
SURVEYOR CERTIFICATION
I hereby certify that the well location shown on this plat was plotted from field notes of actual surveys made by me or under my supervision, and that the same is true and correct to the best of my belief.

Date of Survey
JULY 17, 2000

Signature and Seal of Professional Surveyor
V. L. Bezner

Certificate No.
V. L. BEZNER R.P.S. #7920

JOB #70360 / 200 NE / V.H.B.



Reliance Energy, Inc.
 Willow Spring "23" State No.1
 Chaves County, NM.

CEW 10/4/00