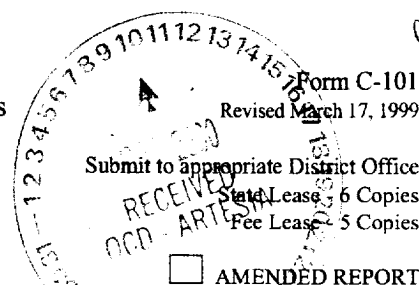


District I
1625 N. French Dr., Hobbs, NM 88240
District II
811 South First, Artesia, NM 88210
District III
1000 Rio Brazos Road, Aztec, NM 87410
District IV
2040 South Pacheco, Santa Fe, NM 87505

State of New Mexico
Energy Minerals and Natural Resources

Oil Conservation Division
2040 South Pacheco
Santa Fe, NM 87505



APPLICATION FOR PERMIT TO DRILL, RE-ENTER, DEEPEN, PLUGBACK, OR ADD A ZONE

1 Operator Name and Address Reliance Energy, Inc. P.O. Box 10946, Midland, Texas 79702		2 OGRID Number 149441
3 API Number 30 - 005 - 63291		4 Well No. 1
5 Property Code 26782	6 Property Name Willow Spring "22" State	7 Surface Location

UL or lot no.	Section	Township	Range	Lot Idn	Feet from the	North/South line	Feet from the	East/West line	County
J	22	4S	25E		1980	South	1980	East	Chaves

8 Proposed Bottom Hole Location If Different From Surface

UL or lot no.	Section	Township	Range	Lot Idn	Feet from the	North/South line	Feet from the	East/West line	County

9 Proposed Pool 1 Wildcat Recess Slope Abo	10 Proposed Pool 2
--	--------------------

11 Work Type Code N	12 Well Type Code G	13 Cable Rotary R	14 Lease Type Code S	15 Ground Level Elevation 3799'
16 Multiple N	17 Proposed Depth 4250	18 Formation Abo	19 Contractor Can-Tex	20 Spud Date 10/23/00

Minimum WOC time 18hrs. 21 Proposed Casing and Cement Program

Hole Size	Casing Size	Casing weight/foot	Setting Depth	Sacks of Cement	Estimated TOC
14-3/4"	11-3/4"	42#	900'	350	surface
11"	8-5/8"	24#	1900	350	* 1200'
7-7/8"	5-1/2"	15.5#	4250	350	3000'
* Tie back @ 200' above 11 3/4" casing.					

22 Describe the proposed program. If this application is to DEEPEN or PLUG BACK, give the data on the present productive zone and proposed new productive zone.

Describe the blowout prevention program, if any. Use additional sheets if necessary. Approximately 900' surface casing will be set and cemented to shut off gravel. 11" hole will be air drilled with intermediate casing set at 1900'. 7-7/8" hole will be air drilled to TD @ 4250'. Production casing will be set at TD and cemented. The Abo will be stimulated as needed.

BOP Program: 3000' psi annular preventor will be installed on 8-5/8"; rotating head used while air drilling.

23 I hereby certify that the information given above is true and complete to the best of my knowledge and belief.		OIL CONSERVATION DIVISION	
Signature: Clyde C. Wheeler		Approved by: ORIGINAL SIGNATURE OF TIM W. GUM DISTRICT II SUPERVISOR	
Printed name: Clyde C. Wheeler		Title:	
Title: Petroleum Engineer		Approval Date: OCT 11 2000 Expiration Date: OCT 11 2001	
Date: 10/5/2000	Phone: (915) 683-4816	Conditions of Approval: Attached <input type="checkbox"/>	

Notify OCD at SPUD & TIME
to witness cementing the
11 3/4" casing.

DISTRICT I
P. O. Box 1980
Hobbs, NM 88241-1980

State of New Mexico
Energy, Minerals, and Natural Resources Department

Form C-102
Revised 02-10-94
Instructions on back

DISTRICT II
P. O. Drawer DD
Artesia, NM 88211-0719

OIL CONSERVATION DIVISION
P. O. Box 2088
Santa Fe, New Mexico 87504-2088

Submit to the Appropriate
District Office
State Lease - 4 copies
Fee Lease - 3 copies

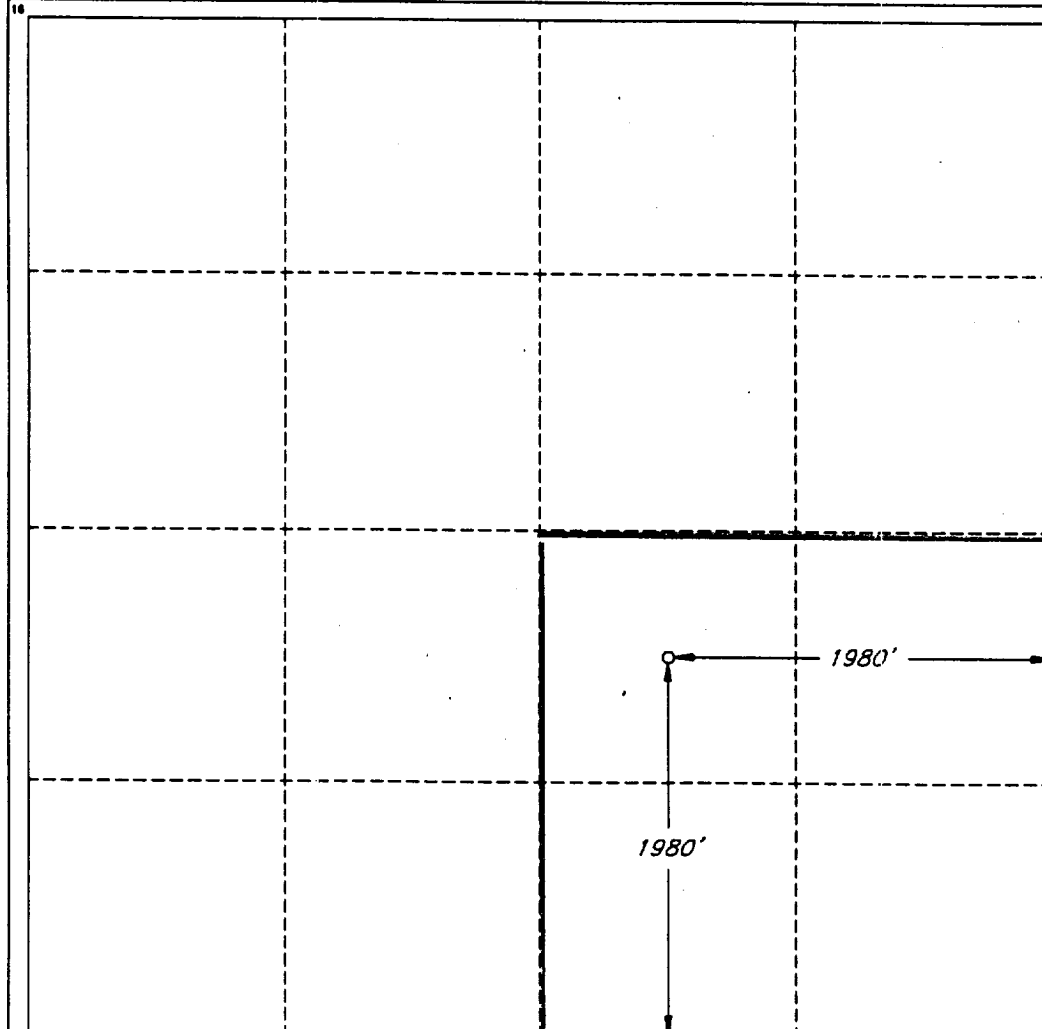
DISTRICT III
1000 Rio Brazos Rd.
Aztec, NM 87410

☐ AMENDED REPORT

DISTRICT IV
P. O. Box 2088
Santa Fe, NM 87507-2088

WELL LOCATION AND ACREAGE DEDICATION PLAT

1 API Number		2 Pool Code		3 Pool Name Pecos Slope Abo					
4 Property Code		5 Property Name WILLOW SPRINGS '22' STATE						6 Well Number 1	
7 OGRID No.		8 Operator Name RELIANCE ENERGY, INC.						9 Elevation 3799'	
10 SURFACE LOCATION									
UL or lot no. J	Section 22	Township 4 SOUTH	Range 25 EAST, N.M.P.M.	Lot Ida	Feet from the 1980'	North/South line SOUTH	Feet from the 1980'	East/West line EAST	County CHAVES
"BOTTOM HOLE LOCATION IF DIFFERENT FROM SURFACE									
UL or lot no.	Section	Township	Range	Lot Ida	Feet from the	North/South line	Feet from the	East/West line	County
12 Dedicated Acres 160.0		13 Joint or Infill N		14 Consolidation Code		15 Order No.			
NO ALLOWABLE WELL BE ASSIGNED TO THIS COMPLETION UNTIL ALL INTERESTS HAVE BEEN CONSOLIDATED OR A NON-STANDARD UNIT HAS BEEN APPROVED BY THE DIVISION									



OPERATOR CERTIFICATION

I hereby certify that the information contained herein is true and complete to the best of my knowledge and belief.

Signature

Clyde C. Wheeler

Printed Name

CLYDE C. WHEELER

Title

Petroleum Engineer

Date

Oct. 4, 2000

SURVEYOR CERTIFICATION

I hereby certify that the well location shown on this plat was plotted from field notes of actual surveys made by me or under my supervision, and that the same is true and correct to the best of my belief.

Date of Survey

JULY 17, 2000

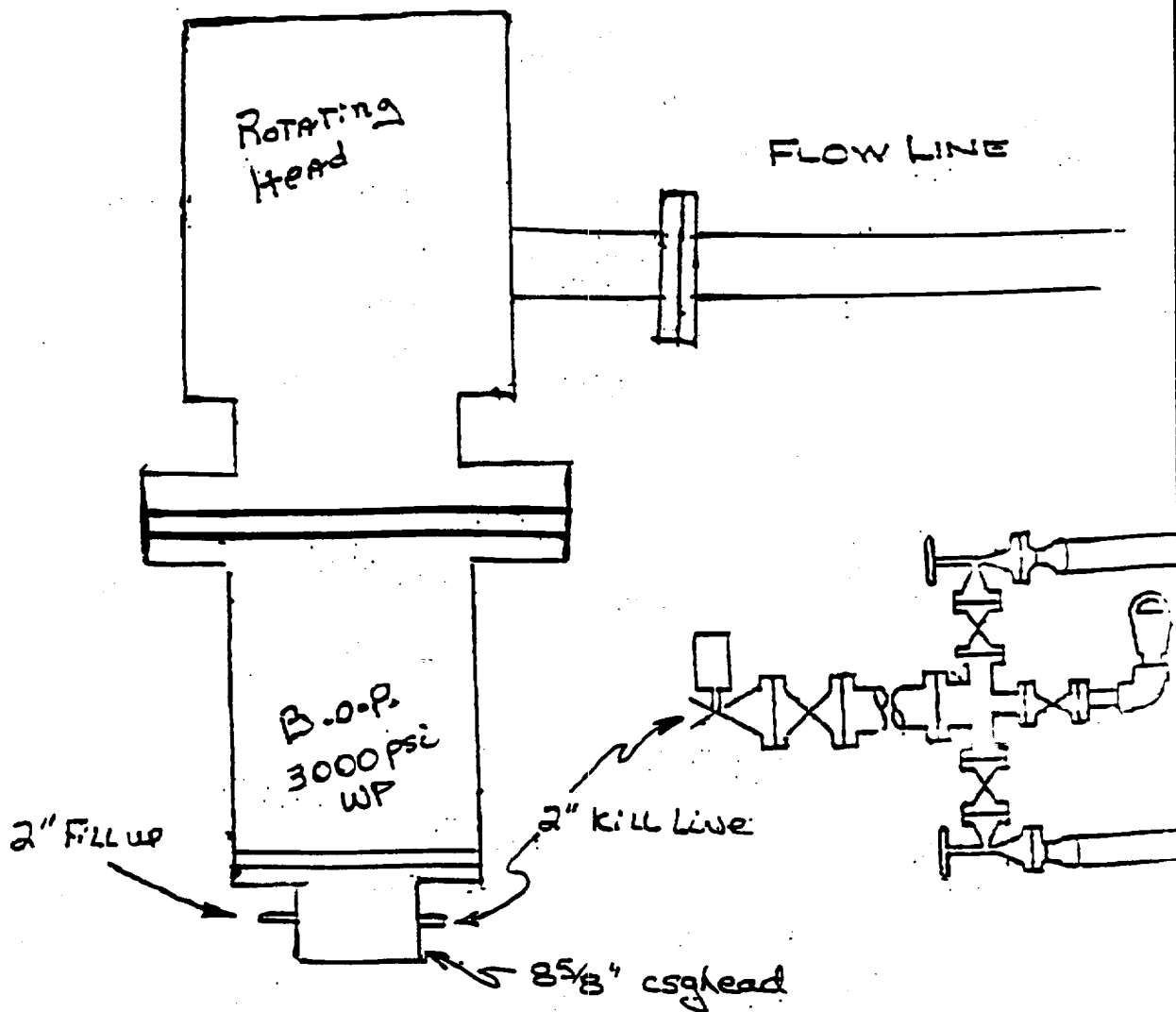
Signature and Seal of
Professional Surveyor

Certificate No.

V. L. BEZNER

R.P.S. #7920

JOB #70359 / 200 NE / V.H.B.



Reliance Energy, Inc
 Willow Spring "22" State No. 1
 Chaves County, NM.

CEW 10/4/00