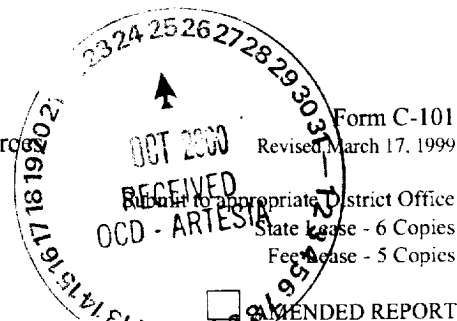


District I  
1625 N. French Dr., Hobbs, NM 88240  
District II  
811 South First, Artesia, NM 88210  
District III  
1000 Rio Brazos Road, Aztec, NM 87410  
District IV  
2040 South Pacheco, Santa Fe, NM 87505

State of New Mexico  
Energy Minerals and Natural Resources  
Oil Conservation Division  
2040 South Pacheco  
Santa Fe, NM 87505



APPLICATION FOR PERMIT TO DRILL, RE-ENTER, DEEPEN, PLUGBACK, OR ADD A ZONE

Operator Name and Address Reliance Energy, Inc. P.O. Box 10946 Midland, Texas 79702		COGID Number 149441
Property Location 26826		AP Number 30 - 005 - 63299
Property Name Willow Spring "15" State		Well No. 1

UL or lot no.	Section	Township	Range	Lot Idn	Feet from the	North/South line	Feet from the	East/West line	County
N	15	4S	25E		660	South	1980	West	Chaves

Proposed Bottom Hole Location If Different From Surface

UL or lot no.	Section	Township	Range	Lot Idn	Feet from the	North/South line	Feet from the	East/West line	County
Wild cat									
P									

N	G	R	S	3809
N	4250	Abo	Can-Tex	11/01/2000

Minimum WOC time 18 hrs. Proposed Casing and Cement Program

Hole Size	Casing Size	Casing weight/foot	Setting Depth	Sacks of Cement	Estimated TOC
14-3/4"	11-3/4"	42#	900'	350	surface
11"	8-5/8"	24#	1900'	350	tie-back
7-7/8"	5-1/2"	15.5#	4250'	350	3000'

Describe the proposed program. If this application is to DEEPEN or PLUG BACK, give the data on the present productive zone and proposed new productive zone.

Describe the blowout prevention program, if any. Use additional sheets if necessary.

Approximately 900' surface casing will be set and cemented to shut off gravel. 11" hole will be air drilled with intermediate casing set at 1900'. 7-7/8" hole will be air drilled to TD @ 4250'. Production casing will be set at TD and cemented. The Abo will be stimulated as needed.

**BOP Program:** 3000' psi blowout preventor will be installed on 8-5/8"; rotating head used while air drilling.

I hereby certify that the information given above is true and complete to the best of my knowledge and belief.

OIL CONSERVATION DIVISION

Signature: Clyde C. Wheeler

Approved by: ORIGINAL SIGNED BY TIM W. GUM  
DISTRICT II SUPERVISOR

Printed name: Clyde C. Wheeler

Title:

Title: Petroleum Engineer

Approval Date: OCT 30 2000 Expiration Date: OCT 30 2001

Date: 10/24/2000

Phone: (915) 683-4816

Conditions of Appro  
Attached ☐

Operator to bring cement across all  
oil, gas and water bearing zones

Operator to notify NMOCDD time of  
spud and time to witness 11 3/4"  
casing

DISTRICT I  
P. O. Box 1980  
Hobbs, NM 88241-1980

State of New Mexico  
Energy, Minerals, and Natural Resources Department

Form C-102  
Revised 02-10-94  
Instructions on back

DISTRICT II  
P. O. Drawer DD  
Artesia, NM 88211-0719

OIL CONSERVATION DIVISION  
P. O. Box 2088  
Santa Fe, New Mexico 87504-2088

Submit to the Appropriate  
District Office  
State Lease - 4 copies  
Fee Lease - 3 copies

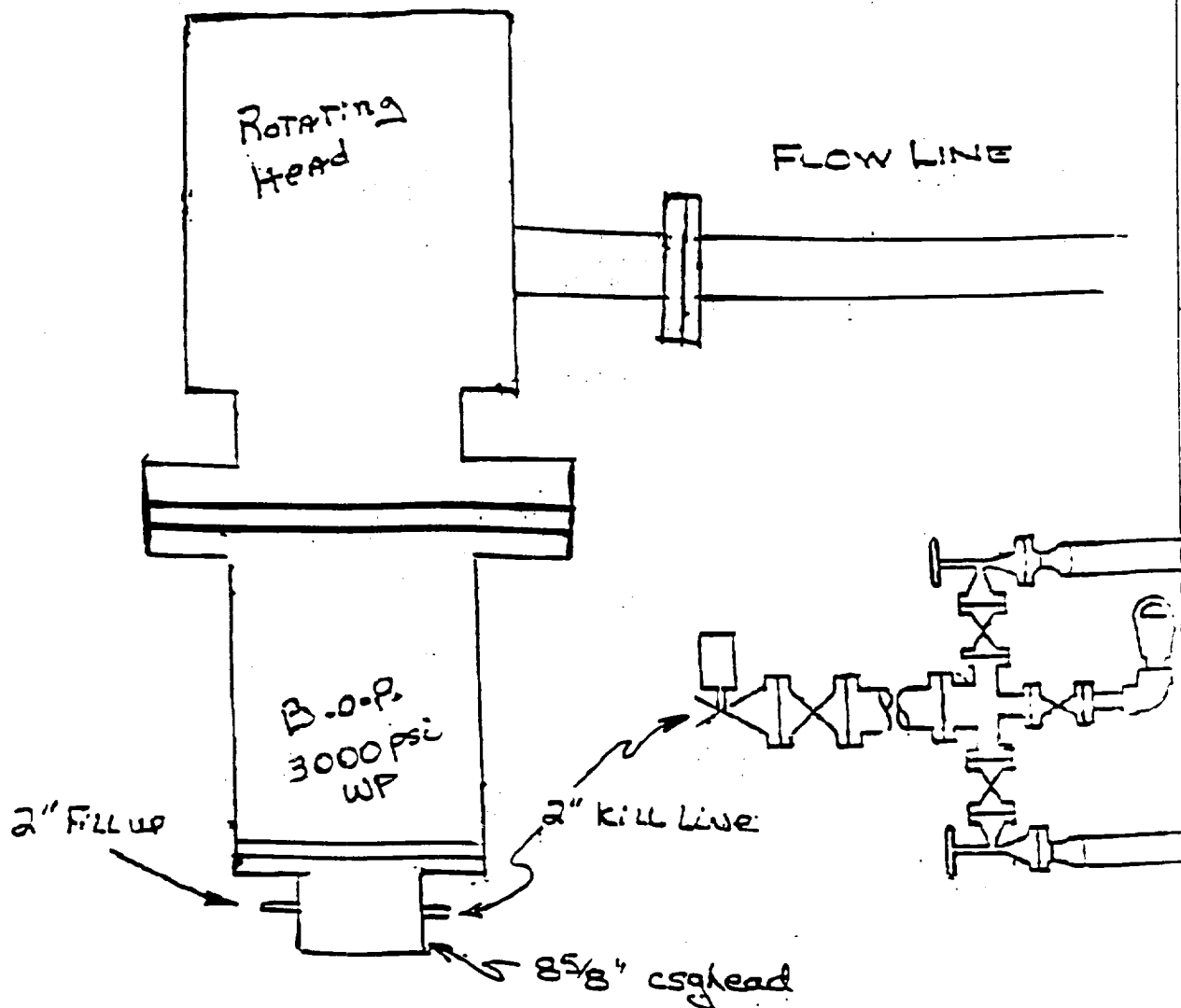
DISTRICT III  
1000 Rio Brazos Rd.  
Aztec, NM 87410

☐ AMENDED REPORT

DISTRICT IV  
P. O. Box 2088  
Santa Fe, NM 87507-2088

WELL LOCATION AND ACREAGE DEDICATION PLAT

1 API Number		2 Pool Code		3 Pool Name Pecos Slope Abo					
4 Property Code		5 Property Name WILLOW SPRINGS '15' STATE						6 Well Number 1	
7 OGRID No.		8 Operator Name RELIANCE ENERGY, INC.						9 Elevation 3809'	
10 SURFACE LOCATION									
UL or lot no. N	Section 15	Township 4 SOUTH	Range 25 EAST, N.M.P.M.	Lot Ida	Feet from the 660'	North/South line SOUTH	Feet from the 1980'	East/West line WEST	County CHAVES
11 BOTTOM HOLE LOCATION IF DIFFERENT FROM SURFACE									
UL or lot no.	Section	Township	Range	Lot Ida	Feet from the	North/South line	Feet from the	East/West line	County
12 Dedicated Acres 160.0		13 Joint or Infill N		14 Consolidation Code		15 Order No.			
NO ALLOWABLE WELL BE ASSIGNED TO THIS COMPLETION UNTIL ALL INTERESTS HAVE BEEN CONSOLIDATED OR A NON-STANDARD UNIT HAS BEEN APPROVED BY THE DIVISION									
						<b>OPERATOR CERTIFICATION</b> I hereby certify that the information contained herein is true and complete to the best of my knowledge and belief.			
						Signature Clyde C. Wheeler			
						Printed Name CLYDE C. WHEELER			
						Title Petroleum Engineer			
						Date Oct. 24, 2000			
						<b>SURVEYOR CERTIFICATION</b> I hereby certify that the well location shown on this plat was plotted from field notes of actual surveys made by me or under my supervision, and that the same is true and correct to the best of my belief.			
						Date of Survey OCTOBER 11, 2000			
						Signature and Seal of Professional Surveyor 			
						Certificate No. V. L. BEZNER R.P.S. #7920			
						JOB #72098 / 200 NE / J.C.P.			



Reliance Energy, Inc.  
Willow Spring "15" State No. 1  
Chaves County, NM.