

District I  
1625 N. French Dr., Hobbs, NM 88240  
District II  
811 South First, Artesia, NM 88210  
District III  
1000 Rio Brazos Road, Aztec, NM 87410  
District IV  
2040 South Pacheco, Santa Fe, NM 87505

State of New Mexico  
Energy Minerals and Natural Resources

Oil Conservation Division  
2040 South Pacheco  
Santa Fe, NM 87505

Form C-101  
Revised March 17, 1999

OCT 2000  
RECEIVED  
OCD - ARTESIA

Submit to appropriate District Office  
State Lease - 6 Copies  
Fee Lease - 5 Copies

AMENDED REPORT

APPLICATION FOR PERMIT TO DRILL, RE-ENTER, DEEPEN, PLUG BACK, OR ADD A ZONE

Operator Name and Address Reliance Energy, Inc. P.O. Box 10946 Midland, Texas 79702		OGRID Number 149441 API Number 30-005-63301
--	--	--

Property Code 26827	Property Name Willow Spring "16" State	Well No. 1
------------------------	---	---------------

Surface Location									
UL or lot no.	Section	Township	Range	Lot Idn	Feet from the	North/South line	Feet from the	East/West line	County
N	16	4S	25E		660	South	1980	West	Chaves

Proposed Bottom Hole Location If Different From Surface

UL or lot no.	Section	Township	Range	Lot Idn	Feet from the	North/South line	Feet from the	East/West line	County
---------------	---------	----------	-------	---------	---------------	------------------	---------------	----------------	--------

Wildcat Proposed Pool 1 Abo	Proposed Pool 2
-----------------------------------	-----------------

Work Type Code N Multiple	Well Type Code G Proposed Depth 4250	Cable Rotary R Formation Abo	Lease Type Code S Contractor Can-Tex	Ground Level Elevation 3864' Spud Date 11/10/2000
---------------------------------	---	---------------------------------------	---	--

Minimum WOC time 18 hrs.

Proposed Casing and Cement Program

Hole Size	Casing Size	Casing weight/foot	Setting Depth	Sacks of Cement	Estimate
14-3/4"	11-3/4"	42#	900'	350	surface
11"	8-5/8"	24#	1900'	350	tie-back
7-7/8"	5-1/2"	15.5#	4250'	350	3000'

Describe the proposed program. If this application is to DEEPEN or PLUG BACK, give the data on the present productive zone and proposed new productive zone.

Describe the blowout prevention program, if any. Use additional sheets if necessary.

Approximately 900' surface casing will be set and cemented to shut off gravel. 11" hole will be air drilled with intermediate casing set at 1900'. 7-7/8" hole will be air drilled to TD @ 4250'. Production casing will be set at TD and cemented. The Abo will be stimulated as needed.

BOP Program: 3000' psi blowout preventor will be installed on 8-5/8"; rotating head used while air drilling.

I hereby certify that the information given above is true and complete to the best of my knowledge and belief.		OIL CONSERVATION DIVISION	
Signature: Clyde C. Wheeler	Printed name: Clyde C. Wheeler	Approved by: Sign W. BBA	Title: District Supervisor
Title: Petroleum Engineer	Date: 10/24/2000	Approval Date: OCT 30 2000	Expiration Date: OCT 30 2001
Phone: (915) 683-4816	Conditions of Approval: Attached <input type="checkbox"/>		

Operator to bring cement across all oil, gas and water bearing zones

Operator to notify NMOC time of spud and time to witness 11 3/4" casing

DISTRICT I  
P. O. Box 1980  
Hobbs, NM 88241-1980

State of New Mexico  
Minerals, and Natural Resources

ment

Form C-102  
Revised 02-10-94

Instructions on back

DISTRICT II  
P. O. Drawer DD  
Artesia, NM 88211-0719

**OIL CONSERVATION DIVISION**  
P. O. Box 2088  
Santa Fe, New Mexico 87504-2088

Submit to the Appropriate  
District Office  
State Lease - 4 copies  
Fee Lease - 3 copies

☐ AMENDED REPORT

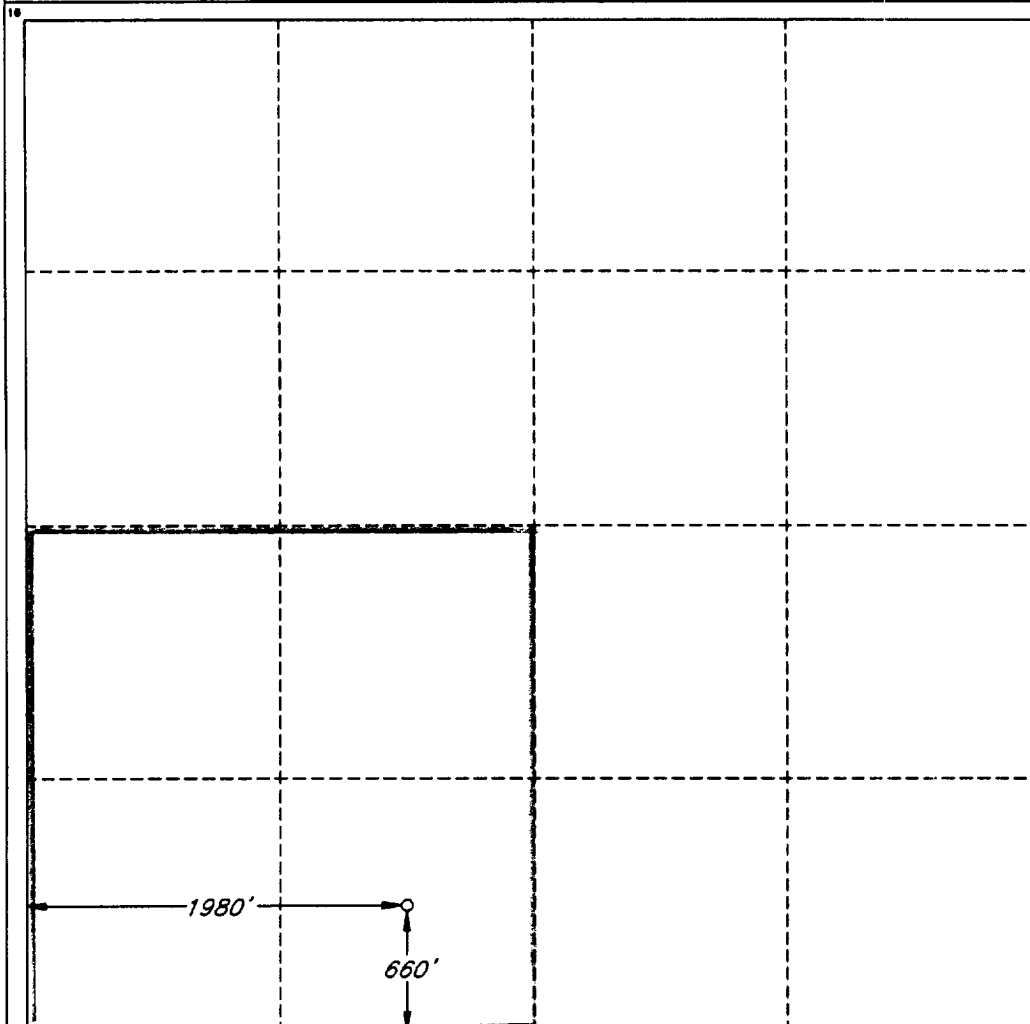
DISTRICT III  
1000 Rio Brazos Rd.  
Aztec, NM 87410

DISTRICT IV  
P. O. Box 2088  
Santa Fe, NM 87507-2088

**WELL LOCATION AND ACREAGE DEDICATION PLAT**

1 API Number		2 Pool Code		3 Pool Name Pecos Slope Abo					
4 Property Code		5 Property Name WILLOW SPRINGS '16' STATE						6 Well Number 1	
7 OGRID No.		8 Operator Name RELIANCE ENERGY, INC.						9 Elevation 3864'	
10 SURFACE LOCATION									
UL or lot no. N	Section 16	Township 4 SOUTH	Range 25 EAST, N.M.P.M.	Lot Ida	Feet from the 660'	North/South line SOUTH	Feet from the 1980'	East/West line WEST	County CHAVES
11 BOTTOM HOLE LOCATION IF DIFFERENT FROM SURFACE									
UL or lot no.	Section	Township	Range	Lot Ida	Feet from the	North/South line	Feet from the	East/West line	County
12 Dedicated Acres 160.0		13 Joint or Infill N		14 Consolidation Code		15 Order No.			

NO ALLOWABLE WELL BE ASSIGNED TO THIS COMPLETION UNTIL ALL INTERESTS HAVE BEEN CONSOLIDATED OR A NON-STANDARD UNIT HAS BEEN APPROVED BY THE DIVISION



**OPERATOR CERTIFICATION**

I hereby certify that the information contained herein is true and complete to the best of my knowledge and belief.

Signature

Clyde C. Wheeler

Printed Name

CLYDE C. WHEELER

Title

Petroleum Engineer

Date

Oct. 24, 2000

**SURVEYOR CERTIFICATION**

I hereby certify that the well location shown on this plat was plotted from field notes of actual surveys made by me or under my supervision, and that the same is true and correct to the best of my belief.

Date of Survey

OCTOBER 11, 2000

Signature and Seal of  
Professional Surveyor

Certificate No.

V. L. BEZNER R.P.S. #7920

JOB #721004 / 200 NE / J.C.P.

New Mexico Oil Conservation Division  
C-102 Instructions

IF THIS IS AN AMENDED REPORT, CHECK THE BOX LABELED  
"AMENDED REPORT" AT THE TOP OF THIS DOCUMENT.

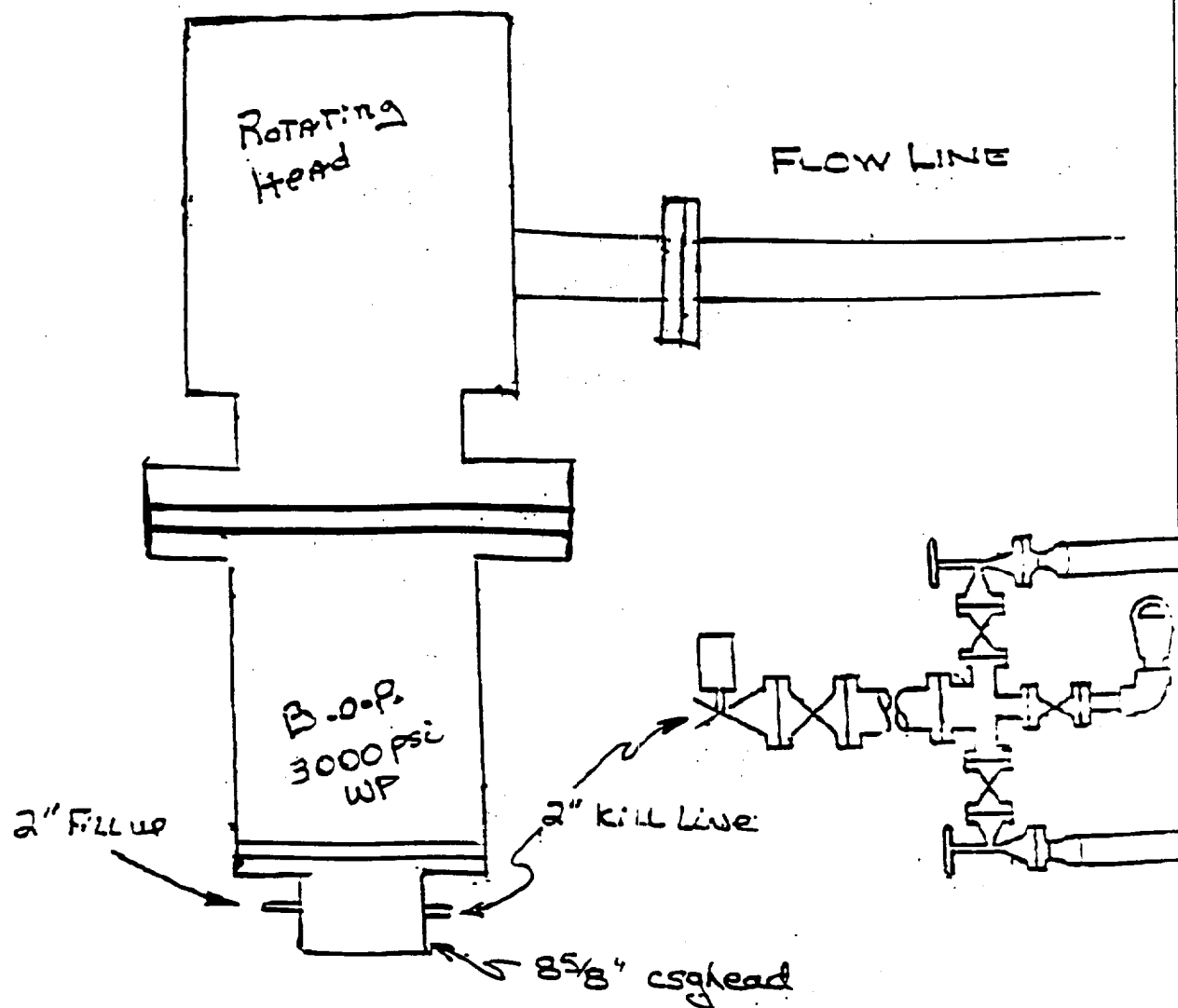
Surveyors shall use the latest United States government survey or dependent resurvey. Well locations will be in reference to the New Mexico Principal Meridian. If the land is not surveyed contact the appropriate OCD district office. Independent subdivision surveys will not be acceptable.

1. The OCD assigned API number for this well
  2. The pool code for this (proposed) completion
  3. The pool name for this (proposed) completion
  4. The property code for this (proposed) completion
  5. The property name (well name) for this (proposed) completion
  6. The well number for this (proposed) completion
  7. Operator's OGRID number
  8. The operator's name
  9. The ground level elevation of this well
  10. The surveyed surface location of this well measured from the section lines. NOTE: If the United States government survey designates a Lot Number for this location use that number in the "UL or lot no." box. Otherwise use the OCD unit letter.
  11. Proposed bottom hole location. If this is a horizontal hole indicate the location of the end of the hole.
  12. The calculated acreage dedicated to this completion to nearest hundredth of an acre
  13. Put a Y if more than one completion will be sharing this same acreage or N if this is the only completion on this acreage
  14. If more than one lease of different ownership has been dedicated to the well show the consolidation code from the following table:

C	Communitization
U	Unitization
F	Forced pooling
O	Other
P	Consolidation pending
- NO ALLOWABLE WILL BE ASSIGNED TO THIS COMPLETION UNTIL ALL INTERESTS HAVE BEEN CONSOLIDATED OR A NON-STANDARD UNIT HAS BEEN APPROVED BY THE DIVISION!
15. Write in the OCD order(s) approving a non-standard location, non-standard spacing, or directional or horizontal drilling
  16. This grid represents a standard section. You may superimpose a non-standard section over this grid. Outline the dedicated acreage and the separate leases within that dedicated acreage. Show the well surface location and bottom hole location, if it is directionally drilled, with the dimensions from the section lines in the dimensions from the section lines in the cardinal directions. (Note: A legal location is determined from the perpendicular distance to the edge of the tract.) If this is a high angle or horizontal hole show that portion of the well bore that is open within this pool.

Show all lots, lot numbers, and their respective acreage.

If more than one lease has been dedicated to this completion, outline each one and identify the ownership as to both working interest and royalty.
  17. The signature, printed name, and title of the person authorized to make this report, and the date this document was signed.
  18. The Registered surveyors certification. This section does not have to be completed if this form has been previously accepted by the OCD and is being filed for a change of pool or dedicated acreage.



Reliance Energy, Inc  
Willow Spring "16" State No. 1  
Chaves County, NM.