

District I  
1625 N. French Dr., Hobbs, NM 88240  
District II  
811 South First, Artesia, NM 88210  
District III  
1000 Rio Brazos Road, Aztec, NM 87410  
District IV  
2040 South Pacheco, Santa Fe, NM 87505

State of New Mexico  
Energy Minerals and Natural Resources

Form C-101  
Revised March 17, 1999

Oil Conservation Division  
2040 South Pacheco  
Santa Fe, NM 87505

Submit to appropriate District Office  
State Lease - 6 Copies  
Fee Lease - 5 Copies

RECEIVED  
OCD - ARTESIA

AMENDED REPORT

APPLICATION FOR PERMIT TO DRILL, RE-ENTER, DEEPEN, PLUG BACK, OR ADD A ZONE

Operator Name and Address Reliance Energy, Inc. P.O. Box 10946 Midland, Texas 79702		OGRID Number 149441
Property Code 26828	Property Name Willow Spring "19"	API Number 30 - 005- <del>630</del> 63303
		Well No. 2

UL or lot no.	Section	Township	Range	Lot Idn	Feet from the	North/South line	Feet from the	East/West line	County
N	19	4S	25E		660	South	1980	West	Chaves

UL or lot no.	Section	Township	Range	Lot Idn	Feet from the	North/South line	Feet from the	East/West line	County
Proposed Bottom Hole Location If Different From Surface									

Proposed Pool 1 Pecos Slope Abo	Proposed Pool 2
------------------------------------	-----------------

Work Type Code N Multiple	Well Type Code G Proposed Depth 4250	Cable Rotary R Formation Abo	Lease Type Code S Contractor Can-Tex	Ground Level Elevation 3919 Spud Date 11-12-2000
---------------------------------	---	---------------------------------------	---	---

Minimum WOC time (Yrs.) <sup>21</sup> Proposed Casing and Cement Program

Hole Size	Casing Size	Casing weight/foot	Setting Depth	Sacks of Cement	Estimated TD
14-3/4"	11-3/4"	42#	900'	350	surface
11"	8-5/8"	24#	1900'	350	tie-back
7-7/8"	5-1/2"	15.5#	4250'	350	3000'

Describe the proposed program. If this application is to DEEPEN or PLUG BACK, give the data on the present productive zone and proposed new productive zone.

Describe the blowout prevention program, if any. Use additional sheets if necessary.

Approximately 900' surface casing will be set and cemented to shut off gravel. 11" hole will be air drilled with intermediate casing set at 1900'. 7-7/8" hole will be air drilled to TD @ 4250'. Production casing will be set at TD and cemented. The Abo will be stimulated as needed.

BOP Program: 3000' psi blowout preventor will be installed on 8-5/8"; rotating head used while air drilling.

<sup>22</sup> I hereby certify that the information given above is true and complete to the best of my knowledge and belief.

Signature: *Clyde C. Wheeler*  
Printed name: Clyde C. Wheeler  
Title: Petroleum Engineer

Date: 10/24/2000  
Phone: (915) 683-4816

OIL CONSERVATION DIVISION	
Approved by:	<b>ORIGINAL SIGNED BY TIM W. GUM</b> <b>DISTRICT II SUPERVISOR</b> <i>[Signature]</i>
Title:	
Approval Date:	<b>OCT 30 2000</b>
Expiration Date:	<b>OCT 30 2001</b>
Conditions of Approval:	
Attached	<input type="checkbox"/>

Operator to bring cement across all oil, gas and water bearing zones

Operator to notify NMOCD time of spud and time to witness 11 3/4" casing

**DISTRICT I**  
P. O. Box 1980  
Hobbs, NM 88241-1980

State of New Mexico  
Energy, Minerals, and Natural Resources Department

Form C-102  
Revised 02-10-94  
Instructions on back

**DISTRICT II**  
P. O. Drawer DD  
Artesia, NM 88211-0719

**OIL CONSERVATION DIVISION**  
P. O. Box 2088  
Santa Fe, New Mexico 87504-2088

Submit to the Appropriate  
District Office  
State Lease - 4 copies  
Fee Lease - 3 copies

**DISTRICT III**  
1000 Rio Brazos Rd.  
Aztec, NM 87410

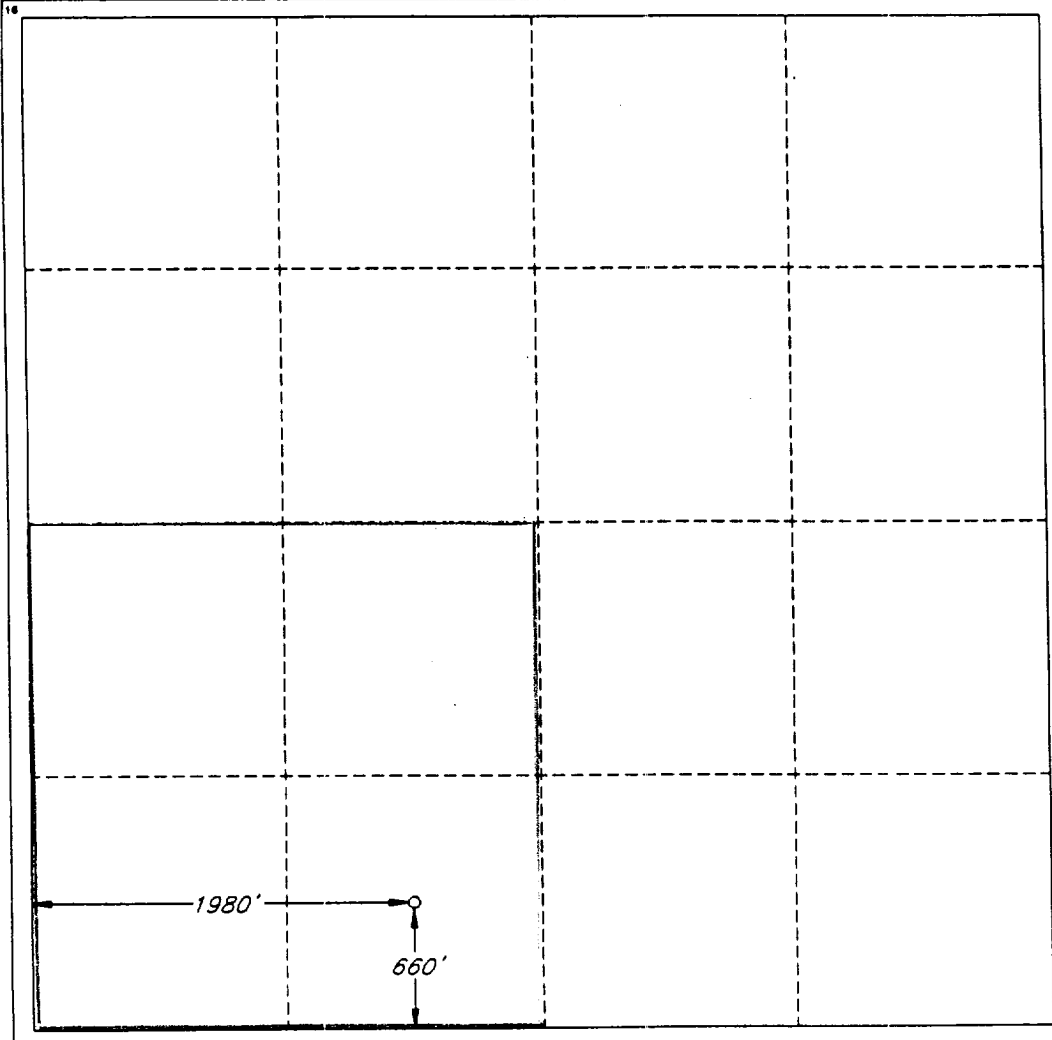
AMENDED REPORT

**DISTRICT IV**  
P. O. Box 2088  
Santa Fe, NM 87507-2088

**WELL LOCATION AND ACREAGE DEDICATION PLAT**

1 API Number		2 Pool Code		3 Pool Name					
4 Property Code		5 Property Name WILLOW SPRINGS '19' STATE						6 Well Number 2	
7 OGRID No.		8 Operator Name RELIANCE ENERGY, INC.						9 Elevation 3919'	
10 SURFACE LOCATION									
UL or lot no. N	Section 19	Township 4 SOUTH	Range 25 EAST, N.M.P.M.	Lot Ida	Feet from the 660'	North/South line SOUTH	Feet from the 1980'	East/West line WEST	County CHAVES
"BOTTOM HOLE LOCATION IF DIFFERENT FROM SURFACE"									
UL or lot no.	Section	Township	Range	Lot Ida	Feet from the	North/South line	Feet from the	East/West line	County
12 Dedicated Acres 160.0		13 Joint or Infill N		14 Consolidation Code		15 Order No.			

NO ALLOWABLE WELL BE ASSIGNED TO THIS COMPLETION UNTIL ALL INTERESTS HAVE BEEN CONSOLIDATED OR A NON-STANDARD UNIT HAS BEEN APPROVED BY THE DIVISION



**OPERATOR CERTIFICATION**  
I hereby certify that the information contained herein is true and complete to the best of my knowledge and belief.

Signature  
*Clyde C. Wheeler*  
Printed Name  
**CLYDE C. WHEELER**

Title  
**Petroleum Engineer**

Date  
**Oct. 25, 2000**

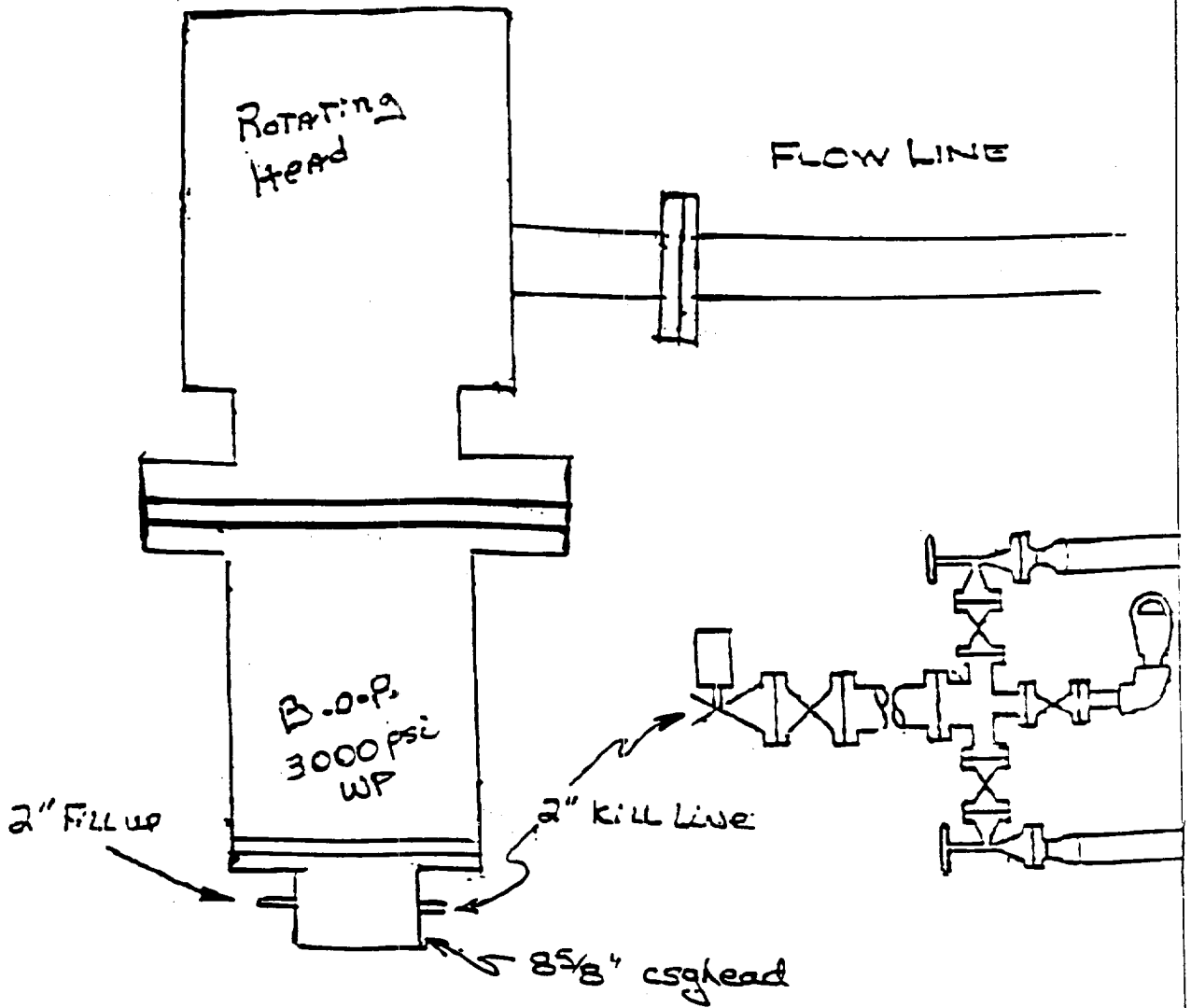
**SURVEYOR CERTIFICATION**  
I hereby certify that the well location shown on this plat was plotted from field notes of actual surveys made by me or under my supervision, and that the same is true and correct to the best of my belief.

Date of Survey  
**OCTOBER 11, 2000**

Signature and Seal of Professional Surveyor  
*[Signature]*  
**V. L. BEZNER** R.P.S. #7920

Certificate No.  
**V. L. BEZNER R.P.S. #7920**

JOB #72103 / 200 NE / J.C.P.



Reliance Energy, Inc  
 Willow Spring "19" State No. 2  
 Chaves County, NM.