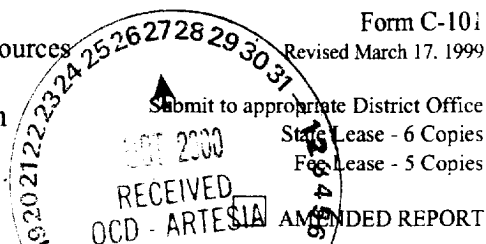


District I
1625 N. French Dr., Hobbs, NM 88240
District II
811 South First, Artesia, NM 88210
District III
1000 Rio Brazos Road, Aztec, NM 87410
District IV
2040 South Pacheco, Santa Fe, NM 87505

State of New Mexico
Energy Minerals and Natural Resources

Oil Conservation Division
2040 South Pacheco
Santa Fe, NM 87505

Form C-101
Revised March 17, 1999



APPLICATION FOR PERMIT TO DRILL, RE-ENTER, DEEPEN, PLUGBACK, OR ADD A ZONE

¹ Operator Name and Address Reliance Energy, Inc. P.O. Box 10946 Midland, Texas 79702		² OGRID Number 749441
³ Property Code 26828	⁵ Property Name Willow Spring "19" State	⁶ Well No. 1

⁷ Surface Location									
UL or lot no.	Section	Township	Range	Lot Idn	Feet from the	North/South line	Feet from the	East/West line	County
P	19	4S	25E		660	South	660	East	Chaves

⁸ Proposed Bottom Hole Location If Different From Surface									
UL or lot no.	Section	Township	Range	Lot Idn	Feet from the	North/South line	Feet from the	East/West line	County
⁹ Proposed Pool 1 Undes Pecos Slope Abo					¹⁰ Proposed Pool 2				

¹¹ Work Type Code N	¹² Well Type Code G	¹³ Casing Rotary R	¹⁴ Lease Type Code S	¹⁵ Ground Level Elevation 3891
¹⁶ Material N	¹⁷ Proposed Depth 4250	¹⁸ Formation Abo	¹⁹ Cementer Can-Tex	²⁰ Spud Date 11/01/2000

Minimum WOC time 18 hrs. ²¹ Proposed Casing and Cement Program

Hole Size	Casing Size	Casing weight/foot	Setting Depth	Sacks of Cement	Estimated TOC
14-3/4"	11-3/4"	42#	900'	350	surface
11"	8-5/8"	24#	1900'	350	tie back
7-7/8"	5-1/2"	15.5#	4250'	350	3000'

²² Describe the proposed program. If this application is to DEEPEN or PLUG BACK, give the data on the present productive zone and proposed new productive zone.

Describe the blowout prevention program, if any. Use additional sheets if necessary.

Approximately 900' surface casing will be set and cemented to shut off gravel. 11" hole will be air drilled with intermediate casing set at 1900'. 7-7/8" hole will be air drilled to TD @ 4250'. Production casing will be set at TD and cemented. The Abo will be stimulated as needed.

BOP Program: 3000' psi blowout preventor will be installed on 8-5/8"; rotating head used while air drilling.

²³ I hereby certify that the information given above is true and complete to the best of my knowledge and belief.		OIL CONSERVATION DIVISION	
Signature: <i>Clyde C. Wheeler</i>		Approved by: ORIGINAL SIGNED BY TIM W. GUM	
Printed name: Clyde C. Wheeler		Title: DISTRICT II SUPERVISOR	
Title: Petroleum Engineer		Approval Date: OCT 30 2000 Expiration Date: OCT 30 2001	
Date: 10/23/2000	Phone: (915) 683-4816	Conditions of Approval: Attached <input type="checkbox"/>	

Operator to bring cement across all oil, gas and water bearing zones

Operator to notify NMOCD time of spud & time to witness 11 3/4" casing

DISTRICT I
P. O. Box 1980
Hobbs, NM 88241-1980

State of New Mexico
Energy, Minerals, and Natural Resources Department

Form C-102
Revised 02-10-94
Instructions on back

DISTRICT II
P. O. Drawer DD
Artesia, NM 88211-0719

OIL CONSERVATION DIVISION
P. O. Box 2088
Santa Fe, New Mexico 87504-2088

Submit to the Appropriate
District Office
State Lease - 4 copies
Fee Lease - 3 copies

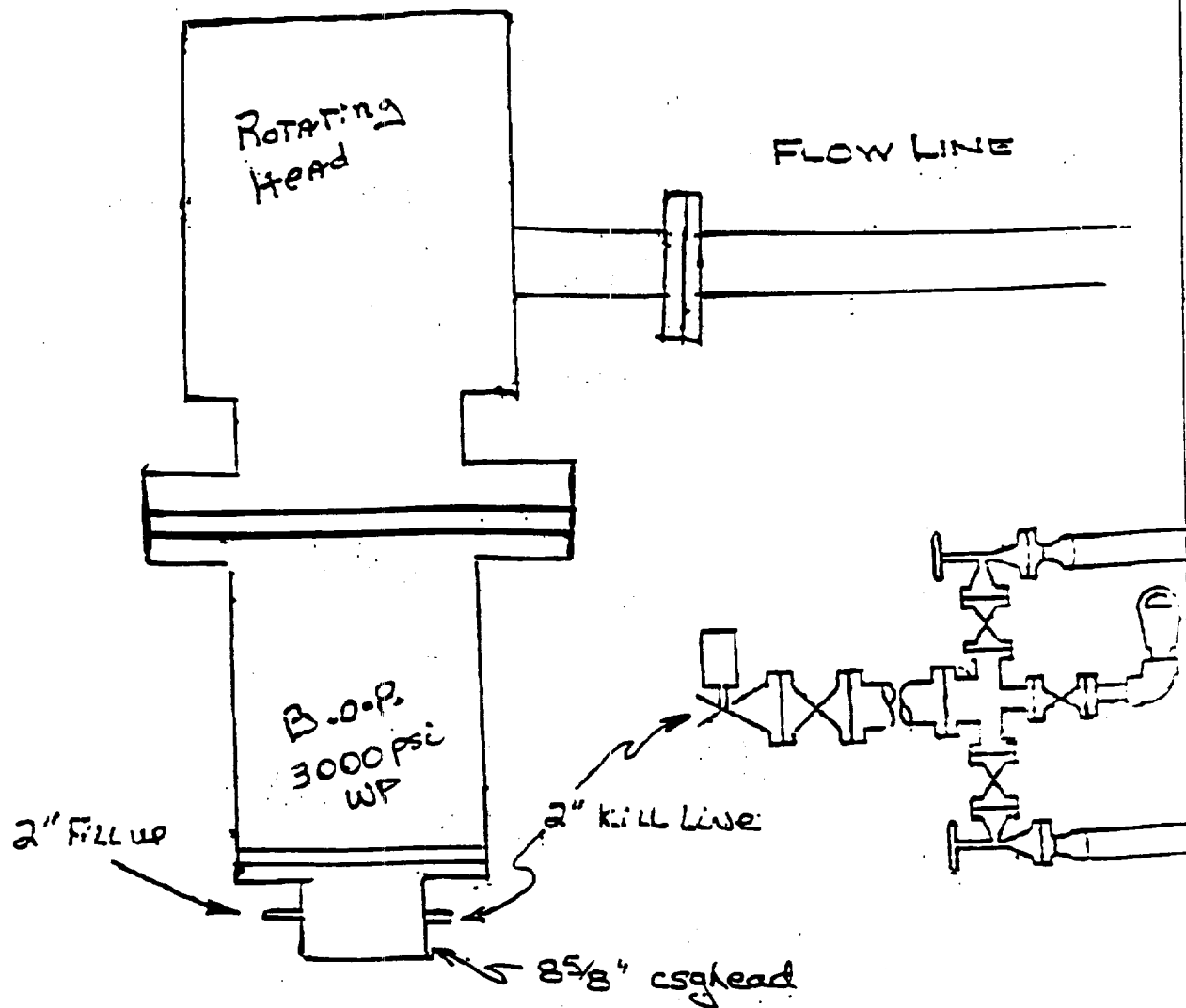
DISTRICT III
1000 Rio Brazos Rd.
Aztec, NM 87410

☐ AMENDED REPORT

DISTRICT IV
P. O. Box 2088
Santa Fe, NM 87507-2088

WELL LOCATION AND ACREAGE DEDICATION PLAT

1 API Number		2 Pool Code		3 Pool Name Pecos Slope Abo					
4 Property Code		5 Property Name WILLOW SPRINGS '19' STATE						6 Well Number 1	
7 OGRID No.		8 Operator Name RELIANCE ENERGY, INC.						9 Elevation 3891'	
10 SURFACE LOCATION									
UL or lot no. P	Section 19	Township 4 SOUTH	Range 25 EAST, N.M.P.M.	Lot Ida	Feet from the 660'	North/South line SOUTH	Feet from the 660'	East/West line EAST	County CHAVES
11 BOTTOM HOLE LOCATION IF DIFFERENT FROM SURFACE									
UL or lot no.	Section	Township	Range	Lot Ida	Feet from the	North/South line	Feet from the	East/West line	County
12 Dedicated Acres 160.0		13 Joint or Infill N		14 Consolidation Code		15 Order No.			
NO ALLOWABLE WELL BE ASSIGNED TO THIS COMPLETION UNTIL ALL INTERESTS HAVE BEEN CONSOLIDATED OR A NON-STANDARD UNIT HAS BEEN APPROVED BY THE DIVISION									
						OPERATOR CERTIFICATION I hereby certify that the information contained herein is true and complete to the best of my knowledge and belief.			
						Signature Clyde C. Wheeler			
						Printed Name CLYDE C. WHEELER			
						Title Petroleum Engineer			
						Date Oct. 23, 2000			
						SURVEYOR CERTIFICATION I hereby certify that the well location shown on this plat was plotted from field notes of actual surveys made by me or under my supervision, and that the same is true and correct to the best of my belief.			
						Date of Survey OCTOBER 11, 2000			
						Signature and Seal of Professional Surveyor 			
						Certificate No. V. L. BEZNER R.P.S. #7920			
						JOB #72102 / 200 NE / J.C.P.			



Reliance Energy, Inc
Willow Spring "19" State No. 1
Chaves County, NM.

CCW 10/23/00