

UNITED STATES  
DEPARTMENT OF THE INTERIOR  
BUREAU OF LAND MANAGEMENT

SUBMIT IN TRIPlicate\*

(Other, instruct on reverse side)

Form approved.  
Budget Bureau No. 1004-0136  
Expires: December 31, 1991

APPLICATION FOR PERMIT TO DRILL OR DEEPEN

1a. TYPE OF WORK

DRILL ☒

DEEPEN ☐

b. TYPE OF WELL

OIL WELL ☐

GAS WELL ☒

OTHER

SINGLE ZONE ☒

MULTIPLE ZONE ☐

2. NAME OF OPERATOR

PECOS RIVER OPERATING, INC.

3. ADDRESS AND TELEPHONE NO.

550 W. Texas, Suite 720, Midland, TX 79701

4. LOCATION OF WELL (Report location clearly and in accordance with any State requirements.)\*

At surface

1980' FNL & 1400' FEL, SEC. 28-T-7-S, R-26-E

At proposed prod. zone

SAME

Unit G

14. DISTANCE IN MILES AND DIRECTION FROM NEAREST TOWN OR POST OFFICE\*

23.7 AIR MILES NORTHEAST OF ROSWELL, NEW MEXICO

15. DISTANCE FROM PROPOSED\*

LOCATION TO NEAREST PROPERTY OR LEASE LINE, FT. (Also to nearest drig. unit line, if any)

1400'

18. DISTANCE FROM PROPOSED LOCATION\*

TO NEAREST WELL, DRILLING, COMPLETED, OR APPLIED FOR, ON THIS LEASE, FT.

1513'

16. NO. OF ACRES IN LEASE

1160

19. PROPOSED DEPTH

4800'

17. NO. OF ACRES ASSIGNED TO THIS WELL

160

20. ROTARY OR CABLE TOOLS

ROTARY

21. ELEVATIONS (Show whether DF, RT, GR, etc.)

3739' GR

22. APPROX. DATE WORK WILL START\*

NOVEMBER 1, 1998

PROPOSED CASING AND CEMENTING PROGRAM

SIZE OF HOLE	GRADE SIZE OF CASING	WEIGHT PER FOOT	SETTING DEPTH	QUANTITY OF CEMENT
12 1/4"	8-5/8"	24#	800' 950'	SUFFICIENT TO CIRCULATE
7 7/8"	4 1/2"	10.5#	4800'	250 SACKS

WELL WILL BE DRILLED TO A TOTAL DEPTH OF 4800' AND ALL POTENTIAL ZONES WILL BE EVALUATED. IF COMMERCIAL PRODUCTION IS INDICATED, WELL WILL BE SELECTIVELY PERFORATED AND STIMULATED.

ATTACHED ARE:

1. WELL LOCATION AND DEDICATION PLAT
2. SUPPLEMENTAL DRILLING DATA
3. SURFACE USE PLAN
4. SURFACE AGREEMENT
5. MAPS

GAS IS DEDICATED TO COMANCHE GAS GATHERING

IN ABOVE SPACE DESCRIBE PROPOSED PROGRAM: If proposal is to deepen, give data on present productive zone and proposed new productive zone. If proposal is to drill or deepen directionally, give pertinent data on subsurface locations and measured and true vertical depths. Give blowout preventer program, if any.

24.

SIGNED

*Will N. Ochs*

TITLE

VP - Engineering & Prod.

DATE

10-17-00

(This space for Federal or State office use)

PERMIT NO.

APPROVAL DATE

Application approval does not warrant or certify that the applicant holds legal or equitable title to those rights in the subject lease which would entitle the applicant to conduct operations thereon.

CONDITIONS OF APPROVAL, IF ANY:

APPROVED BY

(ORIG. SGD.) ARMANDO A. LOPEZ

TITLE

Assistant Field Manager,  
Lands And Minerals

DATE

NOV 17 2000

\*See Instructions On Reverse Side

Title 18 U.S.C. Section 1001, makes it a crime for any person knowingly and willfully to make to any department or agency of the United States any false, fictitious or fraudulent statements or representations as to any matter within its jurisdiction.

WILLIAM H. HAY  
OCT 19 2009

DISTRICT II  
P.O. Boxer 50, Artesia, NM 88211-0719DISTRICT III  
1900 Rio Brazos Rd., Artesia, NM 87410DISTRICT IV  
P.O. Box 2088, Santa Fe, NM 87504-2088

## OIL CONSERVATION DIVISION

P.O. Box 2088  
Santa Fe, New Mexico 87504-2088☐ AMENDED REPORT

## WELL LOCATION AND ACREAGE DEDICATION PLAT

API Number	Pool Code 82730	Pool Name PECOS SLOPE ABO (GAS)
Property Code 008769	Property Name SUN FEDERAL	Well Number 5
OGED No. 017081	Operator Name PECOS RIVER OPERATING, INC.	Elevation 3739'

## Surface Location

UL or lot No.	Section	Township	Range	Lot Idn.	Feet from the	North/South line	Feet from the	East/West line	County
G	28	7 S	26 E		1980	NORTH	1400	EAST	CHAVES

## Bottom Hole Location If Different From Surface

UL or lot No.	Section	Township	Range	Lot Idn.	Feet from the	North/South line	Feet from the	East/West line	County

Dedicated Acres 160	Joint or Infill	Consolidation Code	Order No.
------------------------	-----------------	--------------------	-----------

NO ALLOWABLE WILL BE ASSIGNED TO THIS COMPLETION UNTIL ALL INTERESTS HAVE BEEN CONSOLIDATED  
OR A NON-STANDARD UNIT HAS BEEN APPROVED BY THE DIVISION

	<b>OPERATOR CERTIFICATION</b> I hereby certify the the information contained herein to true and complete to the best of my knowledge and belief. Signature: <u>William R. Huck</u> Printed Name: VP - Eng & Prod Title: 10-17-00 Date:	
	<b>SURVEYOR CERTIFICATION</b> I hereby certify that the well location shown on this plat was plotted from field notes of actual surveys made by me or under my supervision, and that the same is true and correct to the best of my belief. Date Surveyed: AUGUST 11, 1998 Signature: <u>Ronald G. Edson</u> Professional Surveyor Date: 10-17-98 P.O. Num. 98-12133 Certified No. RONALD G. EDSON, 3239 GABRIEL EDSON, 12641 EDSON, 12185	
	CDG	
	3239	

# SUPPLEMENTAL DRILLING DATA

PECOS RIVER OPERATING, INC.  
WELL #5 SUN FEDERAL  
1980'FNL & 1400' FEL, SEC. 28, T7S, R26E  
CHAVES COUNTY, NEW MEXICO

1. SURFACE INFORMATION: Permian (Artesia Group).
2. ESTIMATED TOPS OF GEOLOGIC MARKERS:

Queen	150'	Glorietta	1800'
San Andres	600'	Abo	3850'
3. ANTICIPATED POROSITY ZONES:

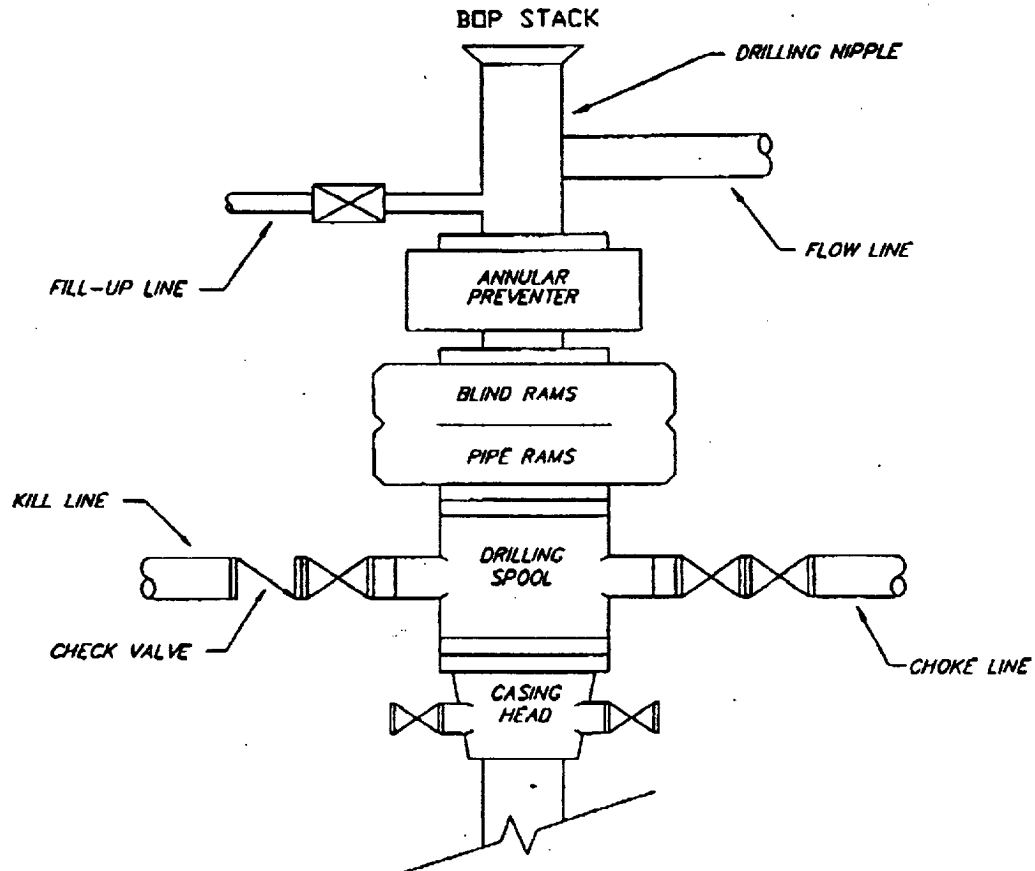
Water	60'
Oil	1100'
Gas	3950'
4. CASING DESIGN:

Size	Interval	Weight	Grade	Joint	Condition
8-5/8"	0- <del>800</del> 950'	24#	J-55	STC	New/Used
4 1/2"	0-4800'	10.5#	J-55	STC	New/Used
5. SURFACE CONTROL EQUIPMENT: A double ram-type preventer (900 series). A sketch of BOP stack is attached.
6. CIRCULATING MEDIUM:

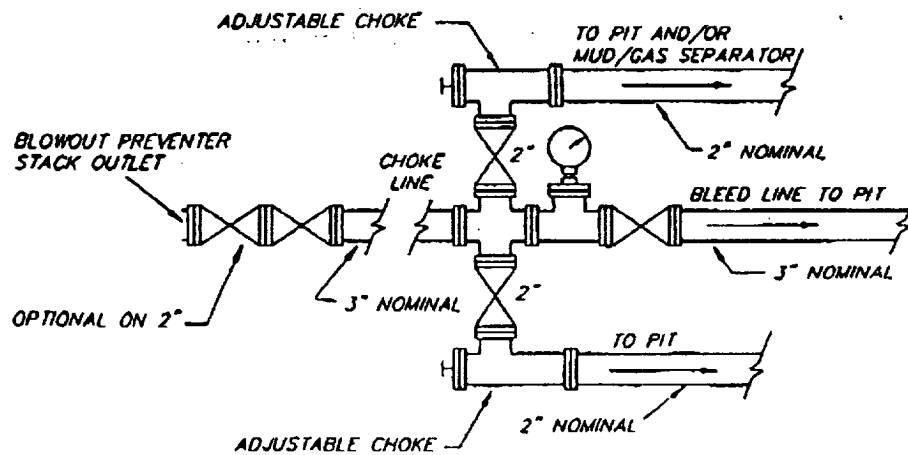
0- <del>800</del> 950'	Fresh water mud with gel added if needed for viscosity.
800'-TD	Salt water mud, conditioned as necessary for control of viscosity and water loss.
7. AUXILIARY EQUIPMENT: Drill string safety valve.
8. TESTING, LOGGING AND CORING PROGRAMS:

DST's:	As warranted.
Coring:	None planned.
Logging:	a Compensated Neutron/Formation Density Log w/Gamma Ray and and Dual Lateralog/Micro-Spherically Focused Log.
9. ABNORMAL PRESSURES, TEMPERATURES OR GASES: None anticipated.
10. ANTICIPATED DATES: It is planned that drilling operations will commence about November 1, 1998. Duration of drilling and completion operations should be 20 to 60 days.

**TYPICAL 3,000 p.s.i.  
BLOWOUT PREVENTER SCHEMATIC**



**TYPICAL 3,000 p.s.i.  
CHOKER MANIFOLD SCHEMATIC**



### Road Log to the Sun Federal #5

Starting Point is 16 miles Northeast of Roswell, New Mexico on US-70 at Mile Post 352.5. This point is at the old Acme School House Ruin which is 14.12 road miles east of US 285.

- 0.0 Turn left (North) through cattleguard and proceed on county road in a Northerly direction for a distance of 6.0 miles to a ranch road.
- 6.00 Turn right (East) and proceed on a ranch road in an easterly direction for a distance of .28 miles to the Northwest corner of proposed well pad.
- 6.28 Sun Federal #5 drillsite.

### THIRTEEN POINT PROGRAM

- 1. Existing Roads: Existing roads which lead to the proposed drillsite are shown on Exhibits "A" and "B".
- 2. Proposed New Road: Proposed new access road will be approximately 700' in length and connect the southwest edge of 400' x 400' area to an existing ranch road shown on Exhibit "B".
  - A. Width: 15 feet with 20-foot R-O-W
  - B. Surfacing Material: The new road will be surfaced with caliche or other available material, if required.
  - C. Maximum Grade: Less than one percent
  - D. Turnouts: None required.
  - E. Drainage Design: New road will be crowned with drainage to the side.
  - F. Culverts: None planned.
  - G. Gates, Cattleguards: None required.
- 3. Location of Existing Facilities: Existing wells in the vicinity of the proposed drillsite are shown on Exhibit "C".
- 4. Location of Proposed Facilities:
  - A. If this well is productive, production and storage facilities will be located on the wellpad.
- 5. Location and Type of Water Supply:
  - A. It is not planned to drill a water supply well. Water for leasehold operations will be purchased from the nearest commercial source.
- 6. Source of Construction Materials: Where possible, material-in-place will be used for upgrading the road and construction of the well pad. If additional material is

required, it will be obtained from the nearest commercial source.

7. Method of Handling Waste Disposal:

- A. Pits will be dug a minimum of 4' below ground level and lined.
- B. Drill cuttings will be disposed of in the pits.
- C. Drilling fluids will be allowed to evaporate in the drilling pits until the pits are dry.
- D. Water produced during test will be disposed of in the drilling pits.
- E. Plastic lining of the pits will be removed before reclaiming the pit area.
- F. Trash, waste paper garbage and junk will be stored in an above ground container, emptied when full and taken to an authorized landfill or other suitable disposal facility. At the conclusion of well completion operations, or plugging operation in the case of a dry hole, the trash and debris containers shall be removed from the location.

8. Ancillary Facilities: None anticipated.

9. Wellsite Layout:

- A. The dimensions and relative location of the drill pad, mud pit and trash container with respect to the well bore are shown on Exhibit "D".
- B. Four inches of top soil will be removed from the surface and stockpiled on southeast corner of location. Four inches of cliche will be used for surfacing of location.

10. Plans for Restoration of the Surface:

- A. After completion of drilling and/or completion operations, all equipment and other material not needed for operations will be removed. Pits will be filled and the location cleaned of all trash and junk to leave the well site in as aesthetically pleasing condition as possible.

11. Other Information:

- A. Topography: The wellsite elevation is 3739' GR +/-.
- B. Soil: Top soil is sandy loam.

- C. Land Type & Use: The vicinity surrounding the drillsite is semi-arid rangeland and its primary use is for grazing.
- D. Flora & Fauna: The vicinity surrounding the drillsite is semiarid desert ranchland. Flora consists primarily of mesquite and range grasses interspersed with other desert plants. Fauna for this type of habitat includes rabbits, lizards, snakes, rodents, skunks, coyotes, dove, quail, and other small birds.
- E. Ponds and Streams: Wellsite is located 2.23 miles to the West.
- F. Water Wells: nearest known water well is 2.0 miles to the northwest.
- G. Residences and Other Structures: Nearest occupied dwelling is 2.0 miles to the northwest.
- H. Archaeological reconnaissance of the well pad will be forwarded directly to the BLM office.
- I. Land Use: Grazing and occasional hunting.
- J. Surface Owner: Gary Lynch
12. Operator's Representative: Representative responsible for assuring compliance with the approved Surface Use Plan:

William R. Huck  
Pecos River Operating, Inc.  
550 W. Texas Suite 720  
Midland, TX 79701  
915/620-8480

13. Certification:

I hereby certify that I, or persons under my direct supervision, have inspected the proposed drillsite and access route; that I am familiar with the conditions which presently exist; that the statements made in the plan are, to the best of my knowledge true and correct; and, that the work associated with the operations proposed herein will be performed by PECOS RIVER OPERATING, INC. and its subcontractors in conformity with this plan and the terms and conditions under which it is approved.

10-17-00  
Date

William R. Huck  
William R. Huck  
PECOS RIVER OPERATING, INC.



**SURFACE USE PLAN**

**FOR**

**DRILLING, COMPLETING AND PRODUCING**

**PECOS RIVER OPERATING, INC.**

**WELL #5 SUN FEDERAL**

**1980' FNL & 1400' FEL, SEC. 28, T7S,R26E**

**CHAVES COUNTY, NEW MEXICO**

**LOCATED:** 23.7 air miles northeast of Roswell, New Mexico

**FEDERAL LEASE NUMBER:** NM 022584

**LEASE ISSUED:** 6-1-56 for a primary term of 5 years and is in its extended term by production.

**RECORD LESSEE:** Sun Oil Company

**OPERATOR'S AUTHORITY:** Designation of Operator from lesses.

**BOND COVERAGE:** Pecos River Operating, Inc. Statewide Bond.

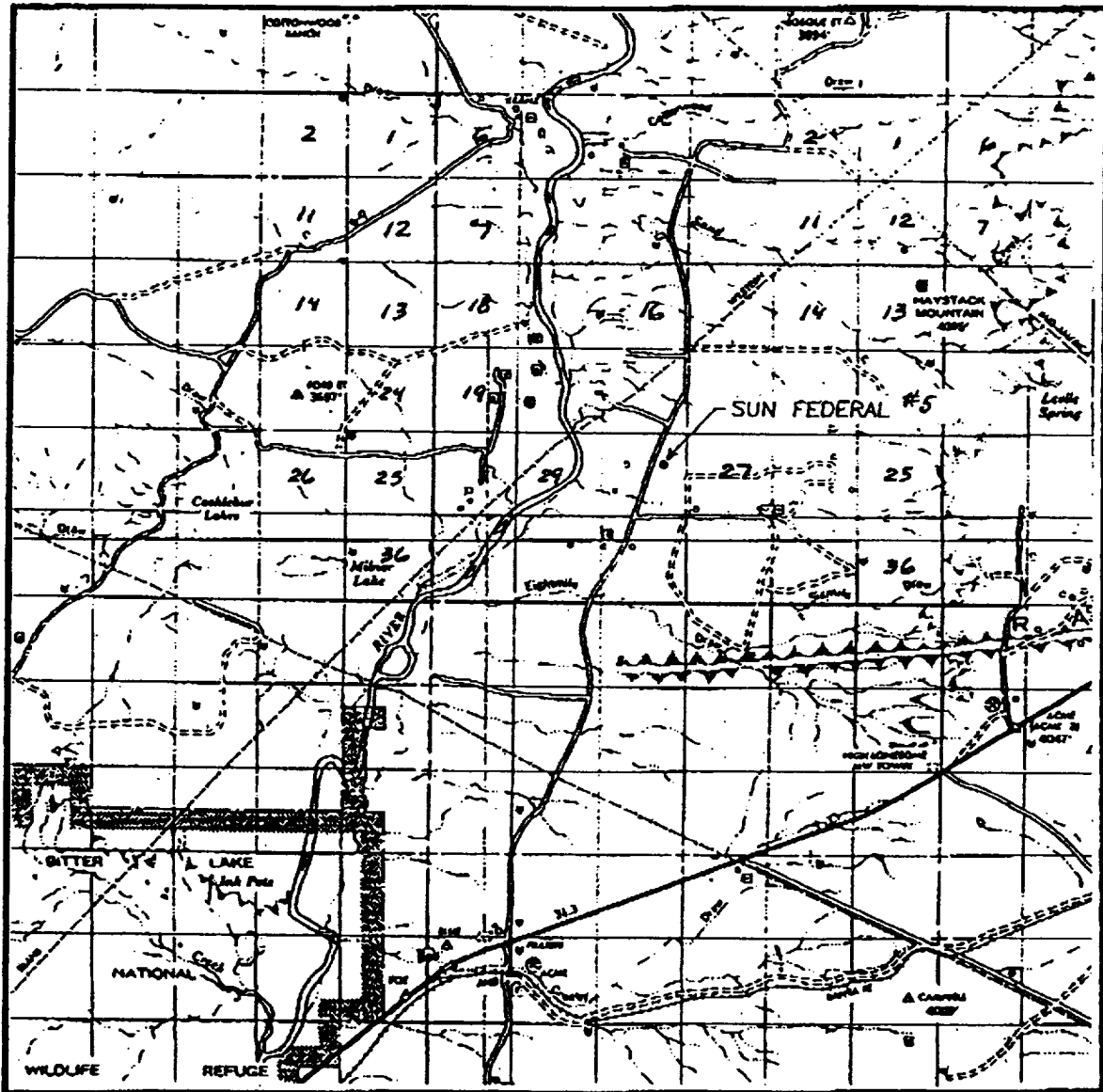
**ACRES IN LEASE:** 1160

**SURFACE OWNERSHIP:** Gary Lynch  
HCR 31, Box 1080  
Roswell, NM 88201

**WELL SPACING:** Infill. (160-acre spacing for Abo gas)

**EXHIBITS:** A: Vicinity Map  
B: Location Verification Map  
C: Oil and Gas Map  
D: Sketch of Well Pad  
E. Surface Agreement

# VICINITY MAP



SCALE: 1" = 2 MILES

SEC. 28 TWP. 7-S RGE. 26-E

SURVEY N.M.P.M.

COUNTY CHAVES

DESCRIPTION 1980' FNL & 1400' FEL

ELEVATION 3739'

OPERATOR PECOS RIVER OPERATING, INC.

LEASE SUN FEDERAL

SUPPLEMENTAL EXHIBIT "A"

VICINITY MAP

PECOS RIVER OPERATING, INC.

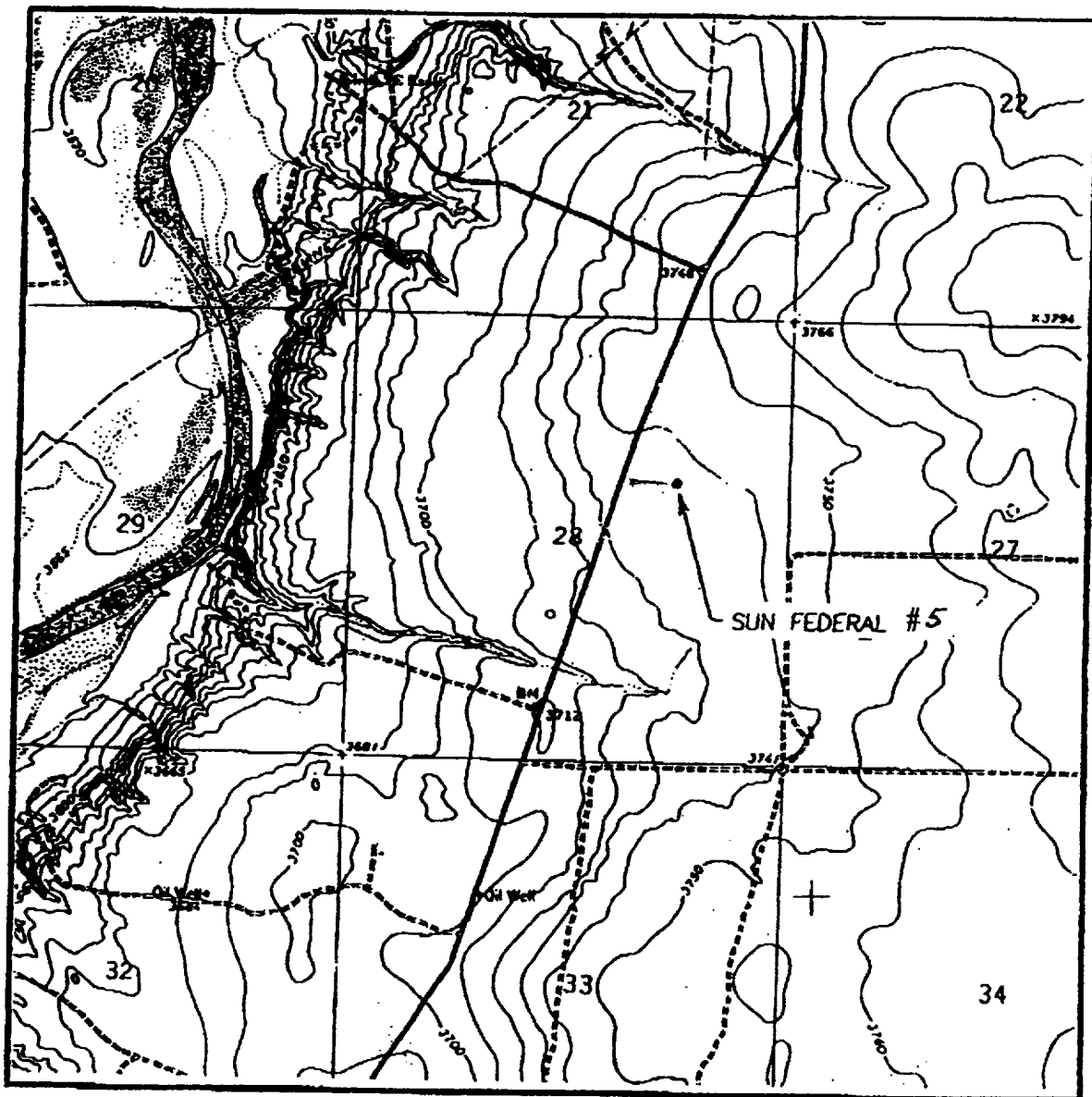
WELL #5 SUN FEDERAL

1980'FNL & 1400'FEL, SEC. 28, T-7-S, R-26-E

CHAVES COUNTY, NEW MEXICO

COUNTY ROAD  
RANCH ROAD  
PROPOSED ROAD

# LOCATION VERIFICATION MAP



SCALE: 1" = 2000'

CONTOUR INTERVAL - 10'  
(DOTTED LINES - 5')

SEC. 28 TWP. 7-S RGE. 26-E

SURVEY N.M.P.M.

COUNTY CHAVES

DESCRIPTION 1980' FNL & 1400' FEL

ELEVATION 3739'

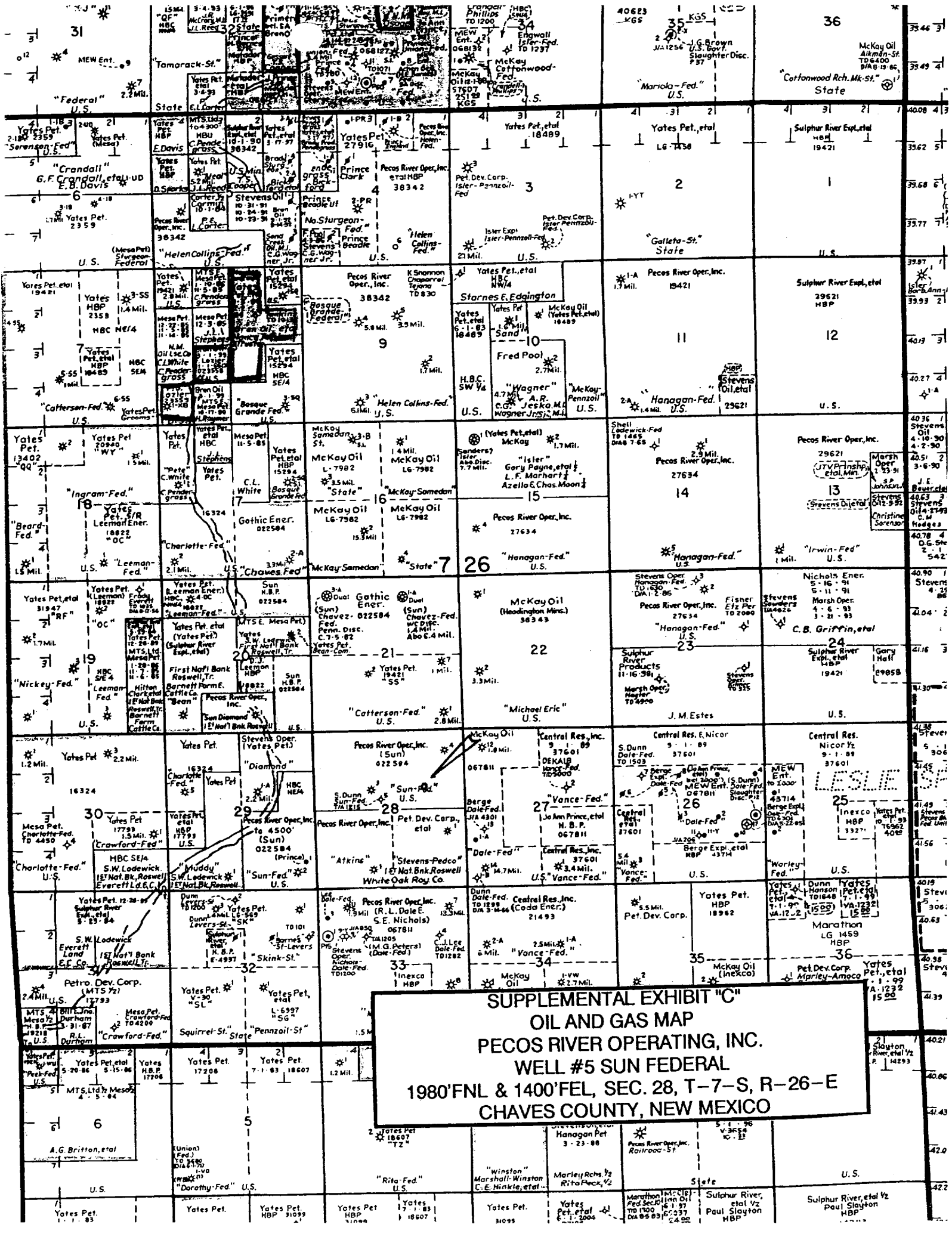
OPERATOR PECOS RIVER OPERATING, INC

LEASE SUN FEDERAL

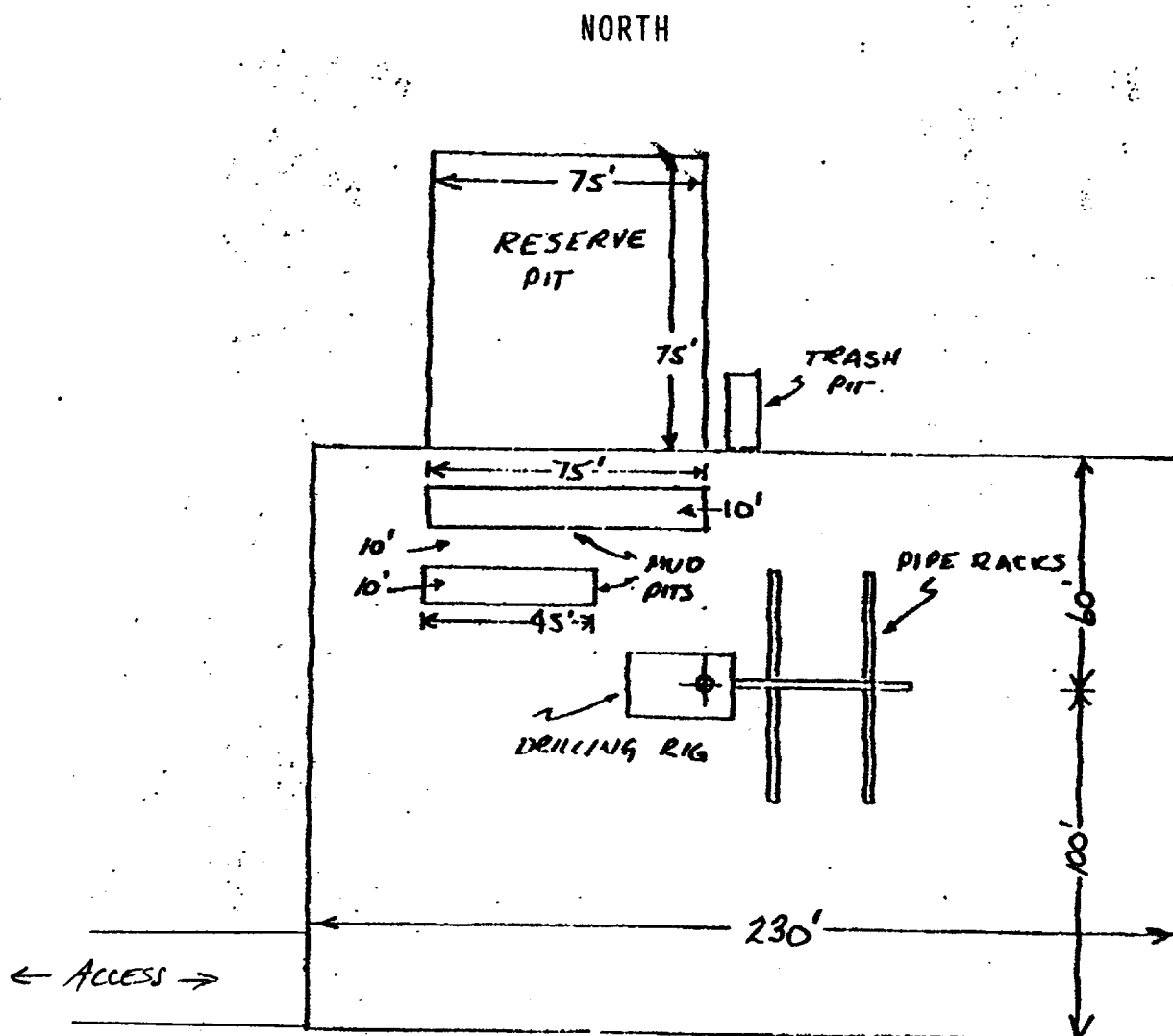
U.S.G.S. TOPOGRAPHIC MAP

EIGHTMILE DRAW, N.M.

SUPPLEMENTAL EXHIBIT "B"  
LOCATION VERIFICATION MAP  
PECOS RIVER OPERATING, INC.  
WELL #5 SUN FEDERAL  
1980'FNL & 1400'FEL, SEC. 28, T-7-S, R-26-E  
CHAVES COUNTY, NEW MEXICO



**SUPPLEMENTAL EXHIBIT "C"**  
**OIL AND GAS MAP**  
**PECOS RIVER OPERATING, INC.**  
**WELL #5 SUN FEDERAL**  
**1980'FNL & 1400'FEL, SEC. 28, T-7-S, R-26-E**  
**CHAVES COUNTY, NEW MEXICO**



SUPPLEMENTAL EXHIBIT "B"  
SKETCH OF WELL LAYOUT

PECOS RIVER OPERATING, INC.  
WELL # 5 SUN FEDERAL  
1980' FNL, 1400' FEL, SEC. 28-T7S-R26E  
CHAVES COUNTY, NEW MEXICO

SUPPLEMENTAL EXHIBIT "E"

SURFACE AGREEMENT  
FOR  
PECOS RIVER OPERATING, INC.  
WELL #5 SUN FEDERAL  
1980' FNL & 1400' FEL, SEC. 28, T-7-S, R-26-E  
SEC. 28, T7S, R26E

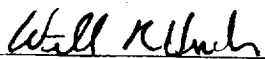
Records show that the above described tract of land is owned as follows:

Surface: Gary Lynch  
HCR 31, Box 1080  
Roswell, NM 88202

Minerals: U. S. Government

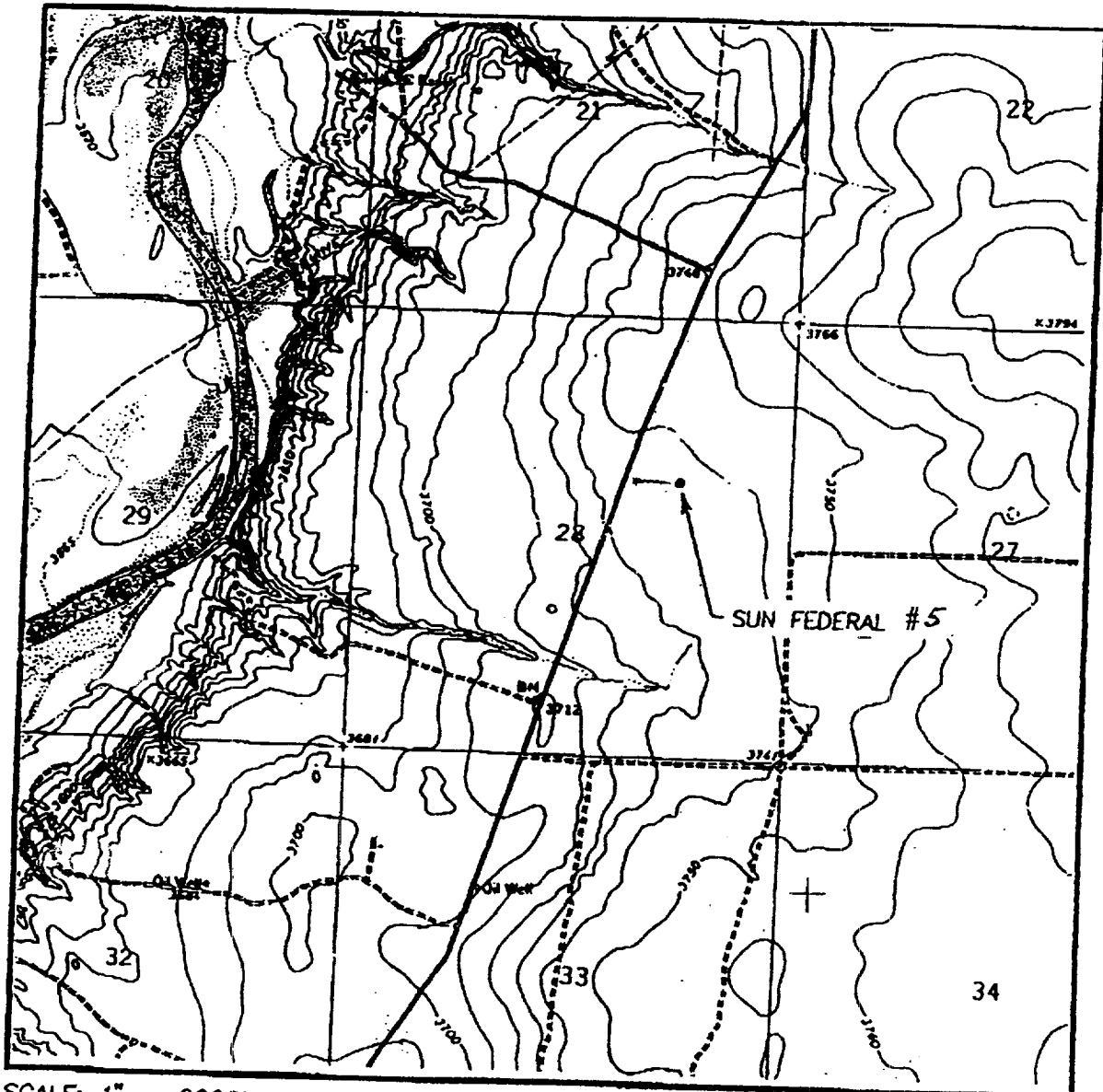
Oil and Gas Leases: Sun Oil Company

Designation of Operator: From lessee

  
\_\_\_\_\_  
William R. Huck  
PECOS RIVER OPERATING, INC.

COUNTY ROAD  
RANCH ROAD  
PROPOSED ROAD

## LOCATION VERIFICATION MAP



SCALE: 1" = 2000'

CONTOUR INTERVAL - 10'  
(DOTTED LINES - 5')

SEC. 28 TWP. 7-S RGE. 26-E

SURVEY N.M.P.M.

COUNTY CHAVES

DESCRIPTION 1980' FNL & 1400' FEL

ELEVATION 3739'

OPERATOR PECOS RIVER OPERATING, INC

LEASE SUN FEDERAL

U.S.G.S. TOPOGRAPHIC MAP

EIGHTMILE DRAW, N.M.

SUPPLEMENTAL EXHIBIT "B"  
LOCATION VERIFICATION MAP  
PECOS RIVER OPERATING, INC.  
WELL #5 SUN FEDERAL  
1980'FNL & 1400'FEL, SEC. 28, T-7-S, R-26-E  
CHAVES COUNTY, NEW MEXICO