

District I  
1625 N. French Dr., Hobbs, NM 88240  
District II  
811 South First, Artesia, NM 88210  
District III  
1000 Rio Brazos Road, Aztec, NM 87410  
District IV  
2040 South Pacheco, Santa Fe, NM 87505

State of New Mexico  
Energy Minerals and Natural Resources

Oil Conservation Division  
2040 South Pacheco  
Santa Fe, NM 87505

Form C-101  
Revised March 17, 1999

Submitted to appropriate District Office  
RECEIVED DISTRICT OFFICE  
JCD - ARTESIA  
State Lease - 6 Copies  
Fee Lease - 5 Copies

☐ AMENDED REPORT

APPLICATION FOR PERMIT TO DRILL, RE-ENTER, DEEPEN, PLUGBACK, OR ADD A ZONE

Operator Name and Address  
Reliance Energy, Inc.  
P.O. Box 10946  
Midland, Texas 79702

OGRID Number  
149441

API Number

30-005-63315

Property Code  
26570

Property Name  
Willow Spring "20" State

Well No.  
2

Surface Location

| TL or lot no. | Section | Township | Range | Lot Idn | Feet from the | North/South line | Feet from the | East/West line | County |
|---------------|---------|----------|-------|---------|---------------|------------------|---------------|----------------|--------|
| N             | 20      | 4S       | 25E   |         | 660           | South            | 1980          | West           | Chaves |

Proposed Bottom Hole Location If Different From Surface

| TL or lot no. | Section | Township | Range | Lot Idn | Feet from the | North/South line | Feet from the | East/West line | County |
|---------------|---------|----------|-------|---------|---------------|------------------|---------------|----------------|--------|
|               |         |          |       |         |               |                  |               |                |        |

Proposed Pool 1

Proposed Pool 2

Unders. Pecos Slope Abo

| Work Type Code | Well Type Code | Cable Rotary | Lease Type Code | Ground Level Elevation |
|----------------|----------------|--------------|-----------------|------------------------|
| N              | G              | R            | S               | 3873'                  |
| Multiple       | Proposed Depth | Formation    | Contractor      | Spud Date              |
| N              | 4250           | Abo          | Can-Tex         | 12/01/2000             |

Proposed Casing and Cement Program

| Hole Size | Casing Size | Casing weight foot | Setting Depth | Sacks of Cement | Estimated |
|-----------|-------------|--------------------|---------------|-----------------|-----------|
| 14-3/4"   | 11-3/4"     | 42#                | 900'          | 350             | surface   |
| 11"       | 8-5/8"      | 24#                | 1900'         | 350             | tie-back  |
| 7-7/8"    | 5-1/2"      | 15.5#              | 4250'         | 350             | 3000'     |
|           |             |                    |               |                 |           |
|           |             |                    |               |                 |           |

Describe the proposed program. If this application is to DEEPEN or PLUG BACK, give the data on the present productive zone and proposed new productive zone.

Describe the blowout prevention program, if any. Use additional sheets if necessary.

Approximately 900' surface casing will be set and cemented to shut off gravel. 11" hole will be air drilled with intermediate casing set at 1900'. 7-7/8" hole will be air drilled to TD @ 4250'. Production casing will be set at TD and cemented. The Abo will be stimulated as needed. Minimum WOC time 8 hrs. 05 follow option 2 Rule 107.

BOP Program: 3000' psi blowout preventor will be installed on 8-5/8"; rotating head used while air drilling.

I hereby certify that the information given above is true and complete to the best of my knowledge and belief.

Signature: Clyde C. Wheeler

Printed name: Clyde C. Wheeler

Title: Petroleum Engineer

Date: 11/15/2000

Phone: (915) 683-4816

OIL CONSERVATION DIVISION

Approved by: ORIGINAL SIGNED BY TIM W. GUM  
DISTRICT II SUPERVISOR

Title:

Approval Date: NOV 20 2000

Expiration Date: NOV 20 2001

Conditions of Approval:

Attached ☐

Operator to notify NMOCD time of spud  
& time to witness 11 3/4" casing

**DISTRICT I**  
P. O. Box 1980  
Hobbs, NM 88241-1980

State of New Mexico  
Department of Energy, Minerals, and Natural Resources

Form C-102  
Revised 02-10-94  
Instructions on back

**DISTRICT II**  
P. O. Drawer DD  
Artesia, NM 88211-0719

## OIL CONSERVATION DIVISION

P. O. Box 2088  
Santa Fe, New Mexico 87504-2088

Submit to the Appropriate  
District Office  
State Lease - 4 copies  
Fee Lease - 3 copies

**DISTRICT III**  
1000 Rio Brazos Rd.  
Aztec, NM 87410

☐ AMENDED REPORT

**DISTRICT IV**  
P. O. Box 2088  
Santa Fe, NM 87507-2088

### WELL LOCATION AND ACREAGE DEDICATION PLAT

|                 |  |  |  |                                |  |                      |  |
|-----------------|--|--|--|--------------------------------|--|----------------------|--|
| 1 API Number    |  | 2 Pool Code                                  |  | 3 Pool Name<br>Pecos Slope Abo |  |                      |  |
| 4 Property Code |  | 5 Property Name<br>WILLOW SPRINGS "20" STATE |  |                                |  | 6 Well Number<br>2   |  |
| 7 OGRID No.     |  | 8 Operator Name<br>RELIANCE ENERGY, INC.     |  |                                |  | 9 Elevation<br>3873' |  |

#### 10 SURFACE LOCATION

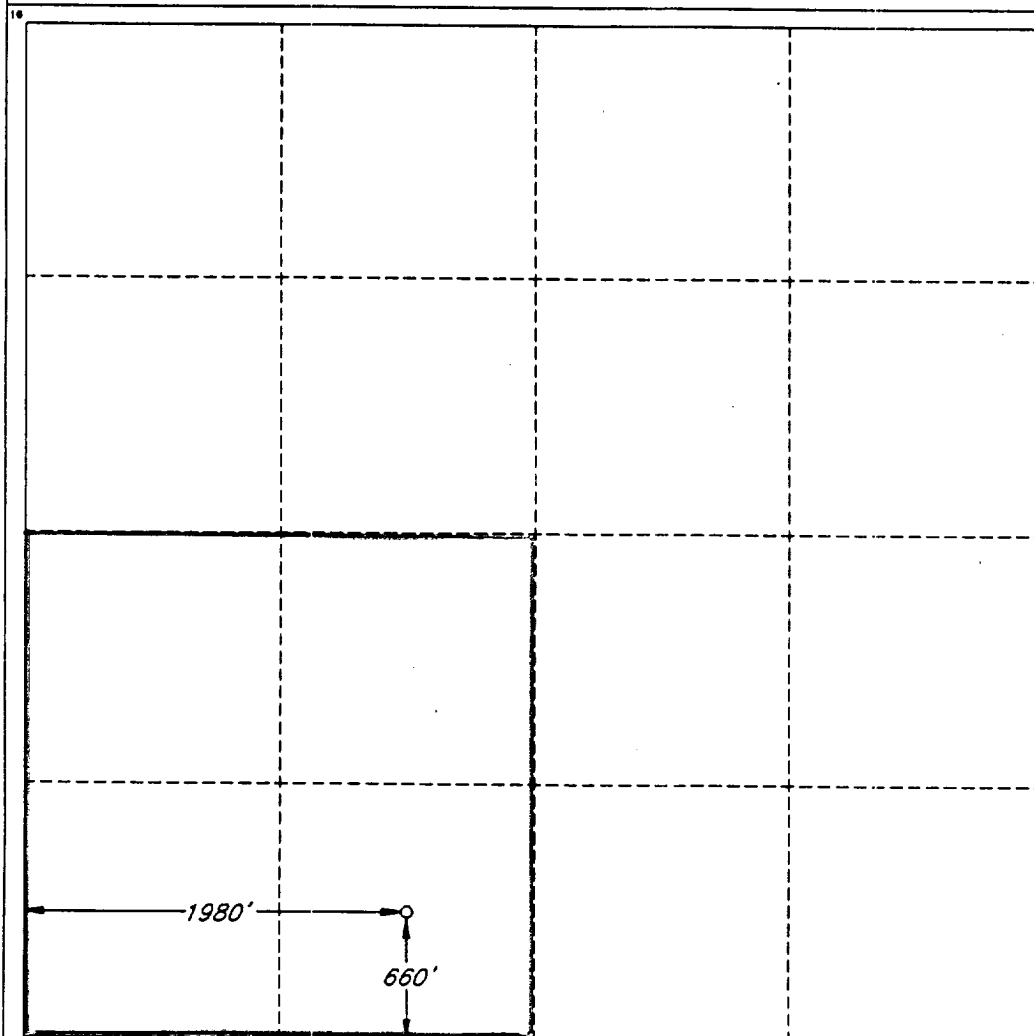
|                    |               |                     |                            |         |                       |                           |                        |                        |                  |
|--------------------|---------------|---------------------|----------------------------|---------|-----------------------|---------------------------|------------------------|------------------------|------------------|
| UL or lot no.<br>N | Section<br>20 | Township<br>4 SOUTH | Range<br>25 EAST, N.M.P.M. | Lot Ida | Feet from the<br>660' | North/South line<br>SOUTH | Feet from the<br>1980' | East/West line<br>WEST | County<br>CHAVES |
|--------------------|---------------|---------------------|----------------------------|---------|-----------------------|---------------------------|------------------------|------------------------|------------------|

#### "BOTTOM HOLE LOCATION IF DIFFERENT FROM SURFACE

|               |         |          |       |         |               |                  |               |                |        |
|---------------|---------|----------|-------|---------|---------------|------------------|---------------|----------------|--------|
| UL or lot no. | Section | Township | Range | Lot Ida | Feet from the | North/South line | Feet from the | East/West line | County |
|---------------|---------|----------|-------|---------|---------------|------------------|---------------|----------------|--------|

|                             |                         |                       |              |
|-----------------------------|-------------------------|-----------------------|--------------|
| 12 Dedicated Acres<br>160.0 | 13 Joint or Infill<br>N | 14 Consolidation Code | 15 Order No. |
|-----------------------------|-------------------------|-----------------------|--------------|

NO ALLOWABLE WELL BE ASSIGNED TO THIS COMPLETION UNTIL ALL INTERESTS HAVE BEEN CONSOLIDATED OR A NON-STANDARD UNIT HAS BEEN APPROVED BY THE DIVISION



#### OPERATOR CERTIFICATION

I hereby certify that the information contained herein is true and complete to the best of my knowledge and belief.

Signature

*Clyde C. Wheeler*

Printed Name

CLYDE C. WHEELER

Title

Petroleum Engineer

Date

Nov. 15, 2000

#### SURVEYOR CERTIFICATION

I hereby certify that the well location shown on this plat was plotted from field notes of actual surveys made by me or under my supervision, and that the same is true and correct to the best of my belief.

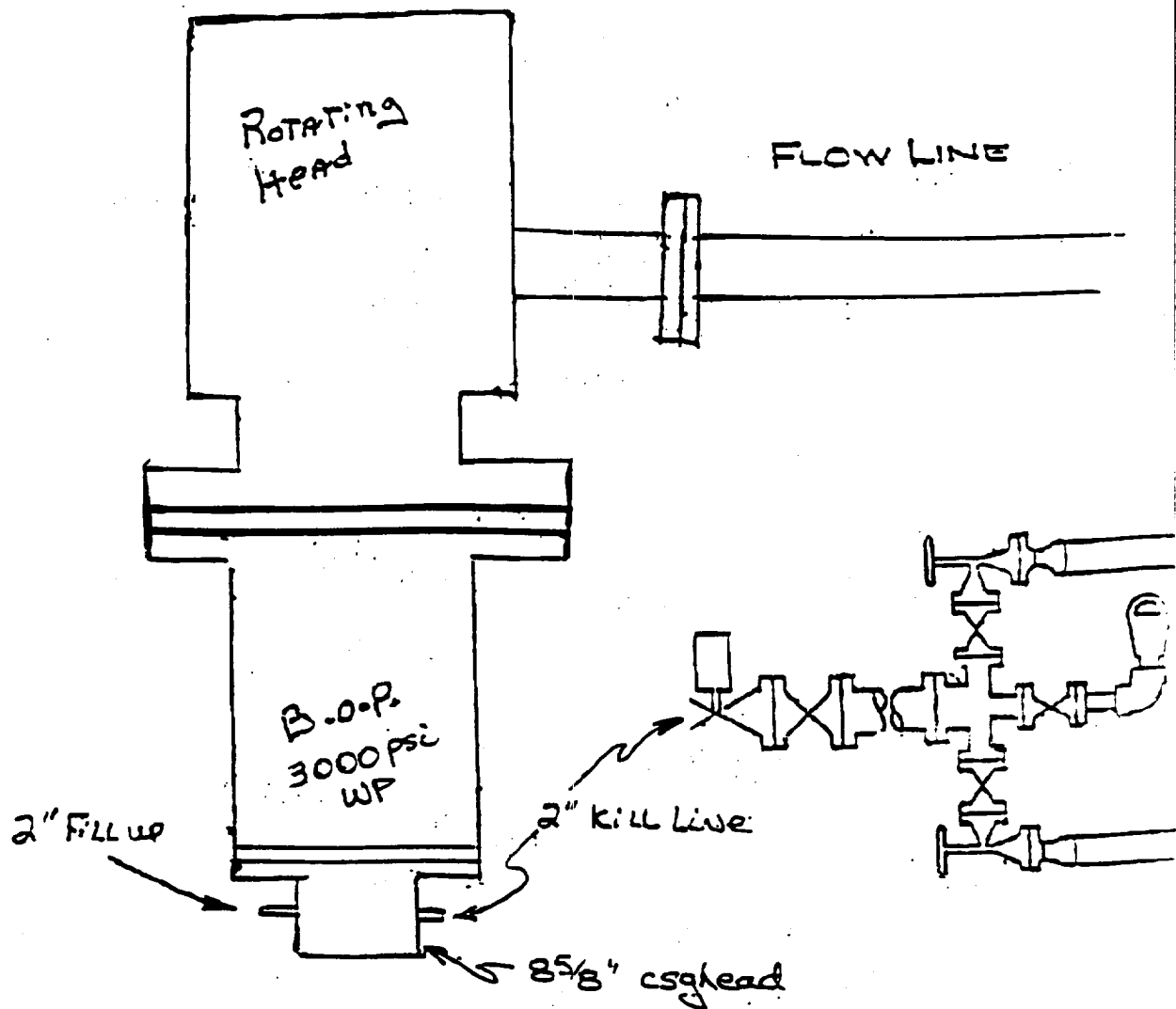
Date of Survey

OCTOBER 11, 2000

Signature and Seal of Professional Surveyor

*[Signature]*  
V. L. BEZNER  
Certificate No. 18-13-2000  
R.D.S. #7920

JOB #72104 / 200 NE / J.C.P.



Reliance Energy, Inc  
 Willow Spring "20" State No. 1  
 Chaves County, NM.

CCW 10/3/00