

Form 3160-3
(August 1999)UNITED STATES
DEPARTMENT OF THE INTERIOR
BUREAU OF LAND MANAGEMENT

APPLICATION FOR PERMIT TO DRILL OR REENTER

0
OMB No. 1004-0136
Expires November 30, 20001a. Type of Work: ☒ DRILL ☐ REENTERb. Type of Well: ☐ Oil Well ☒ Gas Well ☐ Other ☐ Single Zone ☐ Multiple Zone

2. Name of Operator

Yates Petroleum Corporation

3A. Address 105 South Fourth Street
Artesia, New Mexico 882103b. Phone No. (include area code)
(505) 748-1471

4. Location of Well (Report location clearly and in accordance with any State requirements. *)

At surface

990' FSL and 1980' FEL

At proposed prod. Zone

same as above

14. Distance in miles and direction from nearest town or post office*

Approximately 18 miles east of Roswell, New Mexico

15. Distance from proposed*
location to nearest
property or lease line, ft.
(Also to nearest drig. unit line, if any)

900'

16. No. of Acres in lease

320.25

17. Spacing Unit dedicated to this well

S/2

18. Distance from proposed location*
to nearest well, drilling, completed,
applied for, on this lease, ft.

1800'

19. Proposed Depth

6185'

20. BLM/BIA Bond No. on file

585997

21. Elevations (Show whether DF, KDB, RT, GL, etc.)

3826' GL

22. Approximate date work will start*

ASAP

23. Estimated duration

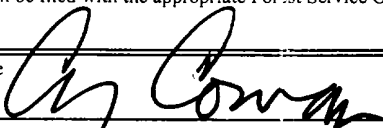
20 Days

24. Attachments

The following, completed in accordance with the requirements of Onshore Oil and Gas Order No. 1, shall be attached to this form:

1. Well plat certified by a registered surveyor.
2. A Drilling Plan.
3. A Surface Use Plan (if the location is on National Forest System Lands, the SUPO shall be filed with the appropriate Forest Service Office).
4. Bond to cover the operations unless covered by an existing bond on file (see Item 20 above).
5. Operator certification.
6. Such other site specific information and/or plans as may be required by the authorized office.

25. Signature



Name (Printed/Typed)

Cy Cowan

Date

8/15/00

Title:

Regulatory Agent

Approved by (Signature)

Name (Printed/Typed)

[Signature]

Date

Title

Office

Application approval does not warrant or certify that the applicant holds legal or equitable title to those rights in the subject lease which would entitle the applicant to conduct operations thereon.

Conditions of approval, if any, are attached.

Title 18 U.S.C. Section 1001 and Title 43 U.S.C. Section 1212, make it a crime for any person knowingly and willfully to make to any department or agency of the United States any false, fictitious or fraudulent statements or representations as to any matter within its jurisdiction.

*(Instructions on reverse)

DISTRICT I
1808 N. French St., Hobbs, NM 88240
DISTRICT II
811 South First, Artesia, NM 88210
DISTRICT III
1800 Rio Grande Rd., Artesia, NM 87410
DISTRICT IV
3040 South Pacheco, Santa Fe, NM 87505

State of New Mexico
Energy, Minerals and Natural Resources Department

Form C-102
Revised March 17, 1999
Instruction on back
Submit to Appropriate District Office
State Lease - 4 Copies
Fee Lease - 3 Copies

OIL CONSERVATION DIVISION
P.O. Box 2088
Santa Fe, New Mexico 87504-2088

☐ AMENDED REPORT

WELL LOCATION AND ACREAGE DEDICATION PLAT

API Number	Pool Code	Pool Name
		Undes. Floor Ranch Pre Permian
Property Code	Property Name	Well Number
	LEONTODON "ASH" FEDERAL COM.	1
OGED No.	Operator Name	Elevation
025575	YATES PETROLEUM CORPORATION	3826

Surface Location

UL or lot No.	Section	Township	Range	Lot Idn	Feet from the	North/South line	Feet from the	East/West line	County
0	10	9S	26E		900	SOUTH	1980	EAST	CHAVES

Bottom Hole Location If Different From Surface

UL or lot No.	Section	Township	Range	Lot Idn	Feet from the	North/South line	Feet from the	East/West line	County
Dedicated Acres	Joint or Infill	Consolidation Code	Order No.						
320 E/2									

NO ALLOWABLE WILL BE ASSIGNED TO THIS COMPLETION UNTIL ALL INTERESTS HAVE BEEN CONSOLIDATED
OR A NON-STANDARD UNIT HAS BEEN APPROVED BY THE DIVISION

				OPERATOR CERTIFICATION	
				I hereby certify the the information contained herein is true and complete to the best of my knowledge and belief.	
				Signature <u>Cy Cowan</u>	
				Cy Cowan Printed Name	
				Regulatory Agent Title	
				August 15, 2000 Date	
				SURVEYOR CERTIFICATION	
				I hereby certify that the well location shown on this plat was plotted from field notes of actual surveys made by me or under my supervision, and that the same is true and correct to the best of my belief.	
				7/24/2000 Date Surveyed	
				Signature & Seal of Professional Surveyor	
				HERSCHEL E. JONES NEW MEXICO 3640 Certificate Not Herschel Jones RLS 3640 LEONTODON DISK 31 GENERAL SURVEYING COMPANY	

FEE

NM-71747

NM-76964

3826 3825

3824 3823

900'

1980'

YATES PETROLEUM CORPORATION
Leontodon "ASH" Federal Com. #1
900' FSL and 1980' FEL
Section 10,-T9S-R26E
Chaves County, New Mexico

1. The estimated tops of geologic markers are as follows:

San Andres	1050'	Cisco	5710'
Glorieta	2115'	Penn Clastics	5825'
Yeso	2245'	Mississippian	6000'
Tubb	3695'	Ordovician	6085'
Abo	4410'	TD	6185'
Wolfcamp	5120'		

2. The estimated depths at which anticipated water, oil or gas formations are expected to be encountered:

Water: 150'-300'
Oil or Gas: 4410' to 6185'

3. Pressure Control Equipment: BOPE will be installed on the 8 5/8" casing and rated for 2000# BOP systems will be consistent with API RP 53. Pressure tests will be conducted before drilling out from under all casing strings which are set and cemented in place. Blowout Preventor controls will be installed prior to drilling the surface plug and will remain in use until the well is completed or abandoned. Preventors will be inspected and operated at least daily to ensure good mechanical working order, and this inspection recorded on the daily drilling report. See Exhibit B.

Auxiliary Equipment:

- A. Auxiliary Equipment: Kelly cock, pit level indicators, flow sensor equipment and a sub with full opening valve to fit the drill pipe and collars will be available on the rig floor in the open position at all times for use when kelly is not in use.

4. THE PROPOSED CASING AND CEMENTING PROGRAM:

- A. Casing Program: (All New)

<u>Hole Size</u>	<u>Casing Size</u>	<u>Size Wt./Ft</u>	<u>Grade</u>	<u>Coupling</u>	<u>Interval</u>	<u>Length</u>
12 1/4"	8 5/8"	24#	J-55	ST&C	1100'	1100'
7 7/8"	5 1/2"	15.5#	J-55	ST&C	6185'	6185'

WITNESS

1. Minimum Casing Design Factors: Collapse 1.125, Burst 1.0, Tensile Strength 1.80
2. Yates Petroleum Corporation requests that a variance be granted in requiring the casing and BOPE to be tested to 2000 PSI to testing the casing and BOPE to 500 PSI. The rig pumps will be used to test the casing and BOPE. Rig pumps used in this area cannot safely test above 500 PSI. We would have to go to the greater expense of hiring an independent service to do the testing. Also, the maximum shut-in bottom hole pressure is 500-1100 PSI. Pressure at the surface is much less. Most of the time the Abo formation requires treatment before it flows.

B. CEMENTING PROGRAM:

Surface casing: Cement with 250 sx Lite "C" (Yield 2.0 Wt. 12.5). Tail in with 200 sx "C" + 2% CaCl₂ (Yield 1.33, Wt. 15.6).

Production Casing: TOC 3900' Cement with 350 sx "C" with 8# Silica Lite #5 Salt (Yield 1.67 Wt. 13).

5. MUD PROGRAM AND AUXILIARY EQUIPMENT:

<u>Interval</u>	<u>Type</u>	<u>Weight</u>	<u>Viscosity</u>	<u>Fluid Loss</u>
Spud-1100'	FWGel/Paper/LCM	8.6-9.6	32-36	N/C
1100'-4400'	Brine	10-10.2	28	N/C
4400'to TD	Polyachrilamide	9.2-10.2	34-38	<10cc

Sufficient mud material(s) to maintain mud properties, control lost circulation and contain a blow out will be available at the well site during drilling operations. Mud will be checked hourly by rig personnel.

6. EVALUATION PROGRAM:

Samples: 10' samples out from under surface casing to TD.

Logging: Plat Form Express: CNL/LDT, w/NGT TD to surface casing; CNL/GR up to Surface; DLL/MSFL TD to surface casing.

Coring: Possible sidewall coring.

DST's: None anticipated.

7. ABNORMAL CONDITIONS, BOTTOM HOLE PRESSURE, AND POTENTIAL HAZARDS:

Anticipated BHP:

From: 0	To: 1100'	Anticipated Max. BHP: 400	PSI
From: 1100'	To: TD	Anticipated Max. BHP: 1100	PSI

Abnormal Pressures Anticipated: None

Lost Circulation Zones Anticipated: None.

H₂S Zones Anticipated: None.

Maximum Bottom Hole Temperature: 110 F

8. ANTICIPATED STARTING DATE:

Plans are to drill this well as soon as possible after receiving approval. It should take approximately 25 days to drill the well with completion taking another 20 days.

MULTI-POINT SURFACE USE AND OPERATIONS PLAN
YATES PETROLEUM CORPORATION
Leontodon "ASH" Federal Com. #1
900' FSL and 1980' FEL
Section 10,-T9S-R26E
Chaves County, New Mexico

This plan is submitted with Form 3160-3, Application for Permit to Drill, covering the above described well. The purpose of this plan is to describe the location of the proposed well, the proposed construction activities and operations plan, the magnitude of the surface disturbance involved and the procedures to be followed in rehabilitating the surface after completion of the operations, so that a complete appraisal can be made of the environmental effect associated with the operations.

1. EXISTING ROADS:

Exhibit A is a portion of the BLM map showing the well and roads in the vicinity of the proposed location. The proposed wellsite is located approximately 18 miles east of Roswell, New Mexico and the access route to the location is indicated in red and green on Exhibit A.

DIRECTIONS:

Go east of Roswell on Highway 70 to the Acme School House. Turn right on (south) on Magdalena road and go approximately 4.5 miles. Just past the windmill turn northeast and go approximately 1.2 miles to the McConkey "HX" #1 well. At this point turn east and go straight for approximately .6 of a mile on the lease road to the McConkey "HX" #2. The new road will start here going southeast.

2. PLANNED ACCESS ROAD:

- A. The proposed new access will be approximately .3 of a mile in length from the point of origin to the southwest corner of the drilling pad. The road will lie in a(n) northwest/southeast direction.
- B. The new road will be 14 feet in width (driving surface) and will be adequately drained to control runoff and soil erosion.
- C. The new road will be bladed with drainage on one side. Some traffic turnouts may be built.
- D. The route of the road is visible.
- E. Existing roads will be maintained in the same or better condition.

3. LOCATION OF EXISTING WELL:

- A. There is drilling activity within a one-mile radius of the wellsite.
- B. Exhibit D shows existing wells within a one-mile radius of the proposed wellsite.

4. LOCATION OF EXISTING AND/OR PROPOSED FACILITIES:

- A. There are production facilities on this lease at the present time.
- B. In the event that the well is productive, the necessary production facilities will be installed on the drilling pad. If the well is productive oil, a gas or diesel self-contained unit will be used to provide the necessary power. No power will be required if the well is productive of gas.

5. LOCATION AND TYPE OF WATER SUPPLY:

- A. It is planned to drill the proposed well with a fresh water system. The water will be obtained from commercial sources and will be hauled to the location by truck over the existing and proposed roads shown in Exhibit A.

6. SOURCE OF CONSTRUCTION MATERIALS:

Dirt contractor will locate closest pit and obtain any material and permits if needed for construction.

7. METHODS OF HANDLING WASTE DISPOSAL:

- A. Drill cuttings will be disposed of in the reserve pits.
- B. Drilling fluids will be allowed to evaporate in the reserve pits until the pits are dry.
- C. Water produced during operations will be collected in tanks until hauled to an approved disposal system, or separate disposal application will be submitted.
- D. Oil produced during operations will be stored in tanks until sold.
- E. Current laws and regulations pertaining to the disposal of human waste will be complied with.
- F. All trash, junk, and other waste materials will be contained in trash cages or bins to prevent scattering and will be removed and deposited in an approved sanitary land fill. Burial on site is not approved.

8. ANCILLARY FACILITIES: None.

9. WELLSITE LAYOUT:

- A. Exhibit C shows the relative location and dimensions of the well pad, the reserve pits, the location of the drilling equipment, rig orientation and access road approach.
- B. The reserve pits will be plastic lined.
- C. A 400' x 400' area has been staked and flagged.

10. PLANS FOR RESTORATION:

- A. After finishing drilling and/or completion operations, all equipment and other material not needed for further operations will be removed. The location will be cleaned of all trash and junk to leave the wellsite in as aesthetically pleasing a condition as possible.
- B. Unguarded pits, if any, containing fluids will be fenced until they have dried and been leveled.
- C. If the proposed well is non-productive, all rehabilitation and/or vegetation requirements of the Bureau of Land Management will be complied with and will be accomplished as expeditiously as possible. All pits will be filled level after they have evaporated and dried.

11. SURFACE OWNERSHIP:

Private Surface, Christine Leisey Trust, Trust, First American Bank Trust Department, PO Box 798, Fort Dodge, IA 50501-0798.

12. OTHER INFORMATION:

- A. Topography: Refer to the existing archaeological report for a description of the topography, flora, fauna, soil characteristics, dwellings, historical and cultural sites.
- B. The primary surface use is for grazing.

13. OPERATOR'S REPRESENTATIVE:

A. Through A.P.D. Approval:

Cy Cowan, Regulatory Agent
Yates Petroleum Corporation
105 South Fourth Street
Artesia, New Mexico 88210
Phone (505) 748-1471

B. Through Drilling Operations,
Completions and Production:

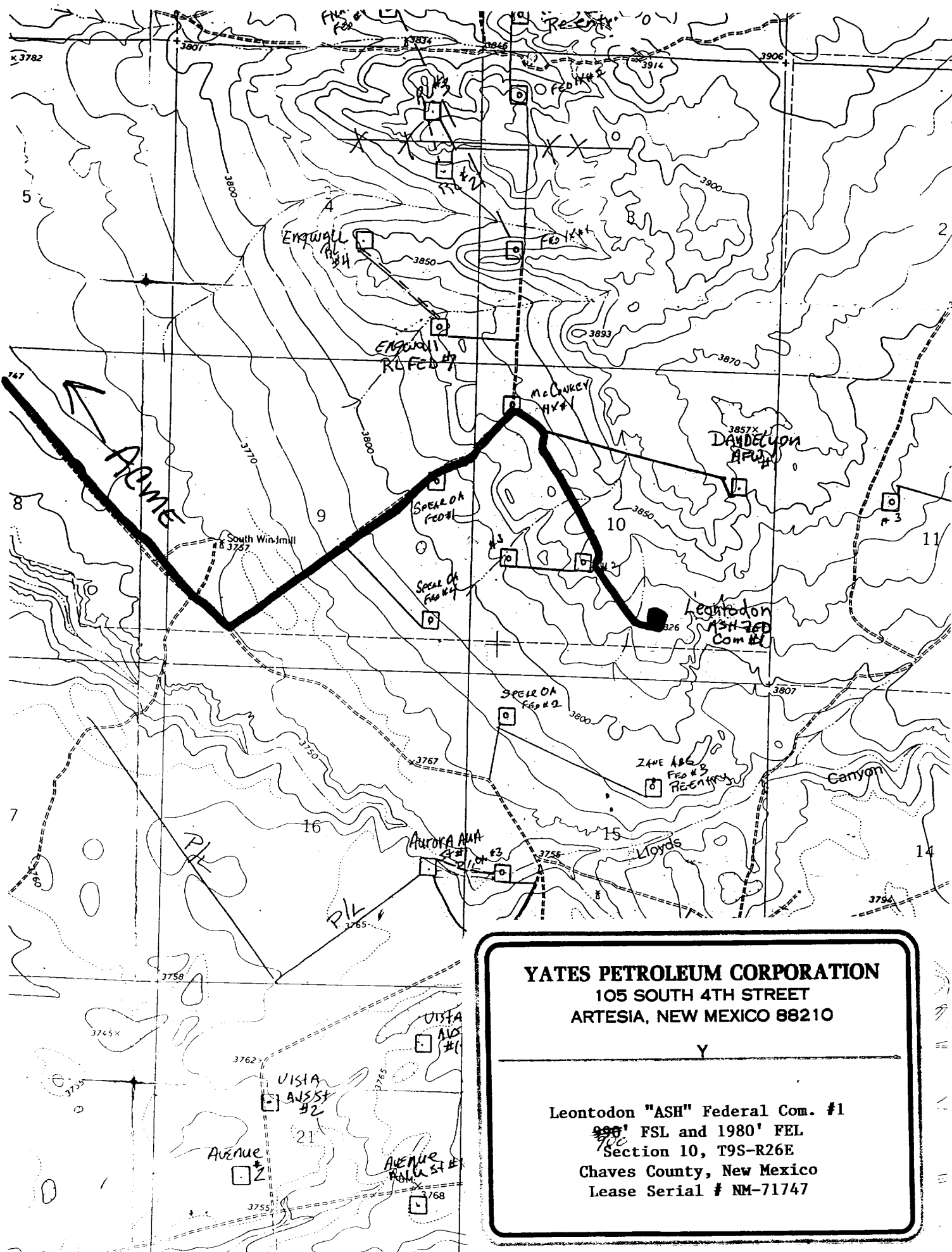
Brian Collins, Operations Manager
Yates Petroleum Corporation
105 South Fourth Street
Artesia, New Mexico 88210
Phone (505) 748-1471

14. CERTIFICATION:

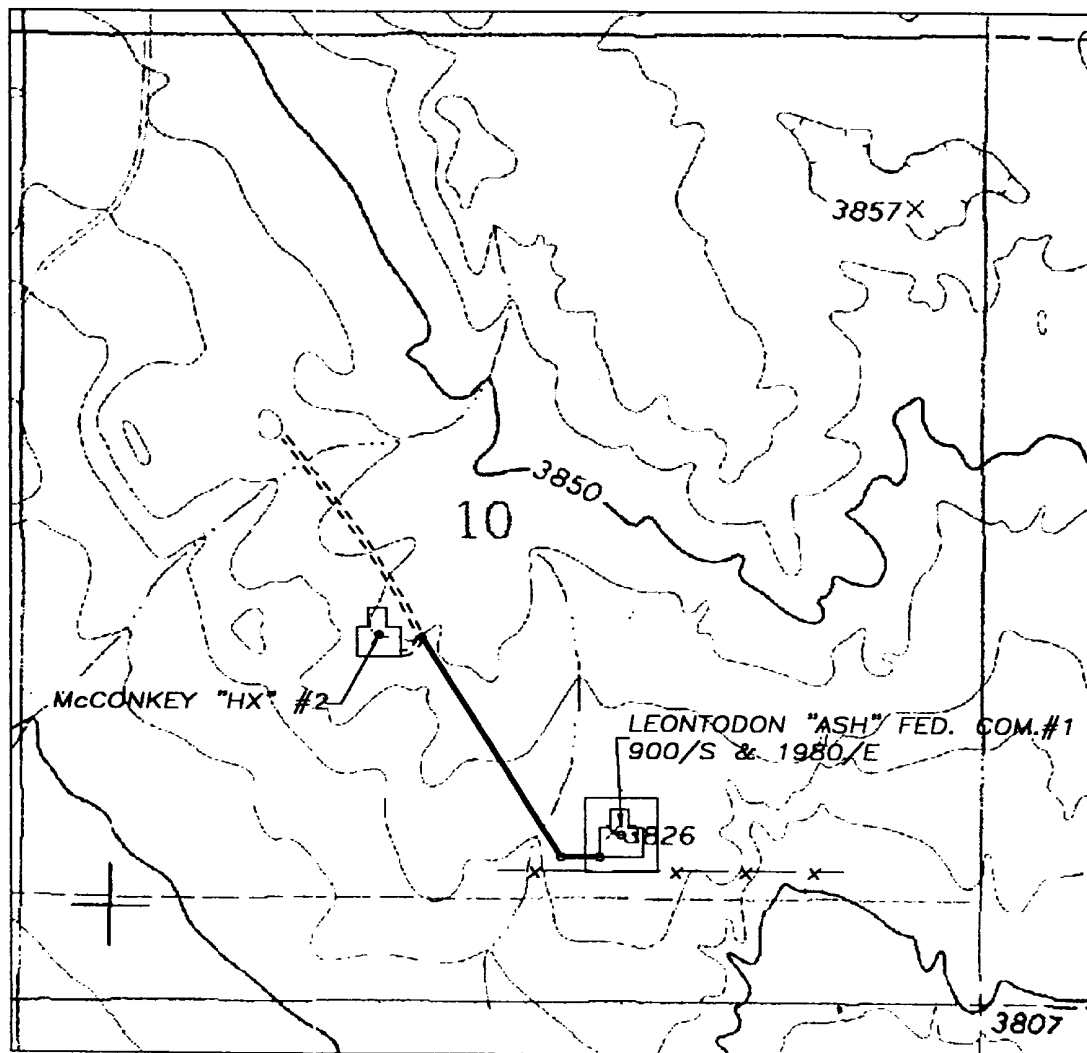
I hereby certify that I, or persons under my direct supervision, have inspected the proposed drill site and access route, that I am familiar with the conditions which presently exist; that the statements made in this plan are to the best of my knowledge, true and correct; and , that the work associated with the operations proposed herein will be performed by Yates Petroleum Corporation and its contractors and subcontractors in conformity with this plan and the terms and conditions under which it is approved. This statement is subject to the provisions of 18 U.S.C. 1001 for the filing of a false statement.

08/15/2000


Regulatory Agent



YATES PETROLEUM CORPORATION LEONTODON "ASH" FEDERAL COM.#1,
SECTION 10, TOWNSHIP 9 SOUTH, RANGE 26 EAST, NMPM, CHAVES COUNTY, NEW MEXICO.



50' 0 50' 100'
Scale 1" = 50'

THE PREPARATION OF THIS PLAT AND THE PERFORMANCE OF THE SURVEY UPON WHICH IT IS BASED WERE DONE UNDER MY DIRECTION AND THE PLAT ACCURATELY DEPICTS THE RESULTS OF SAID SURVEY AND MEET THE REQUIREMENTS OF THE STANDARDS FOR LAND SURVEYS IN NEW MEXICO AS ADOPTED BY THE NEW MEXICO STATE BOARD OF REGISTRATION FOR PROFESSIONAL ENGINEERS AND LAND SURVEYORS.

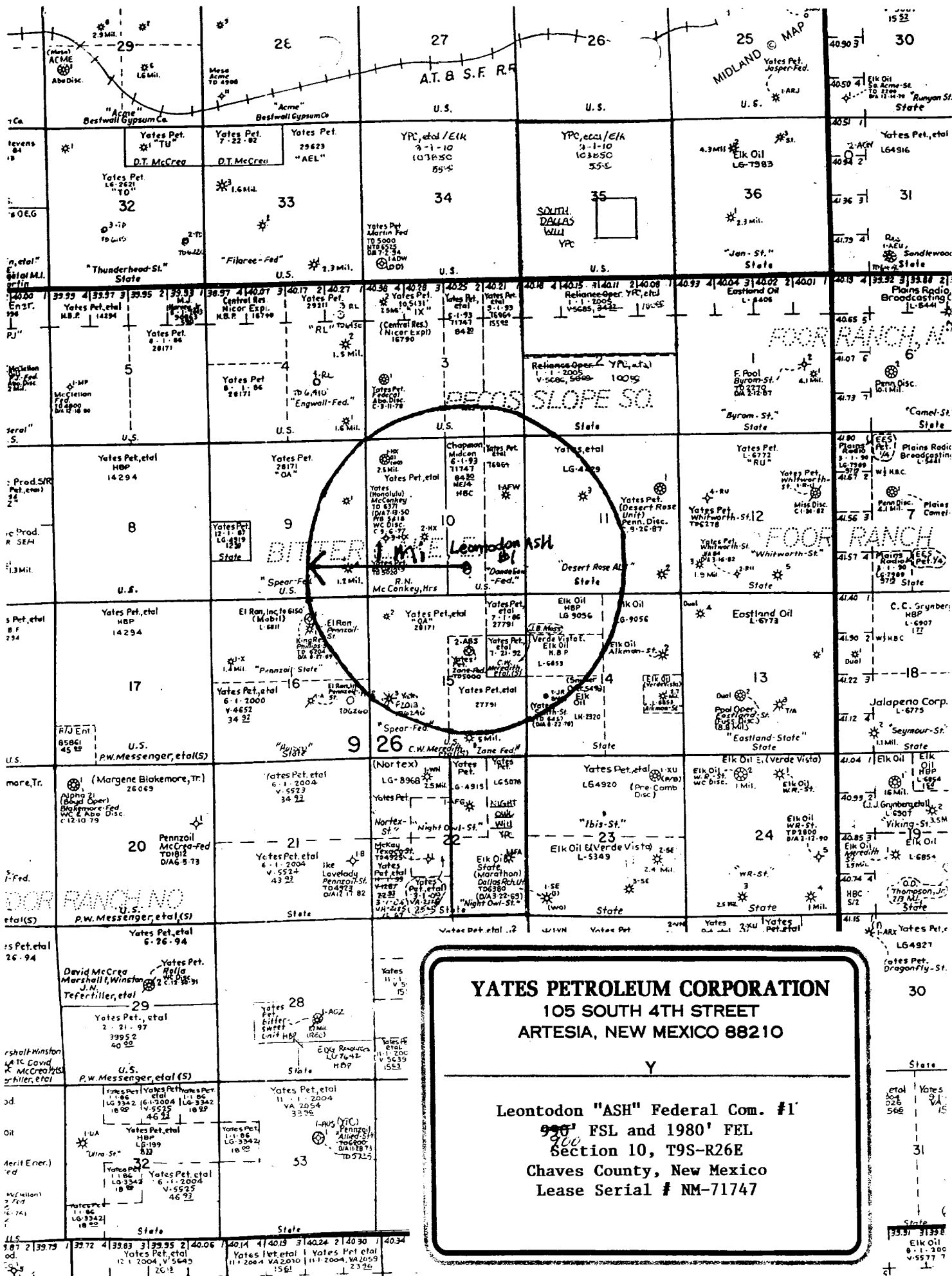
3640
HERSCHEL L. JONES R.S. No. 3640

GENERAL SURVEYING COMPANY P.O. BOX 1928
LOVINGTON, NEW MEXICO 88260

YATES PETROLEUM CORP.

LEASE ROAD TO YATES PETROLEUM CORPORATION LEONTODON "ASH" FEDERAL COM.#1 LOCATED IN SECTION 10, TOWNSHIP 9 SOUTH, RANGE 26 EAST, NMPM, CHAVES COUNTY, NEW MEXICO.

Survey Date: 8/03/2000	Sheet 1 of 1 Sheets
Drawn By: Ed Blevins	W.O. Number
Date: 8/06/00	Scale 1" = 1000' LEONTODON

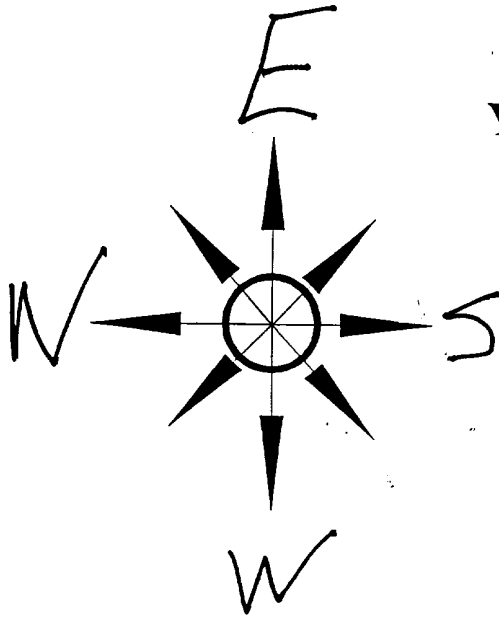


PB - L1

Yates Petroleum Corporation

Location Layout for Permian Basin

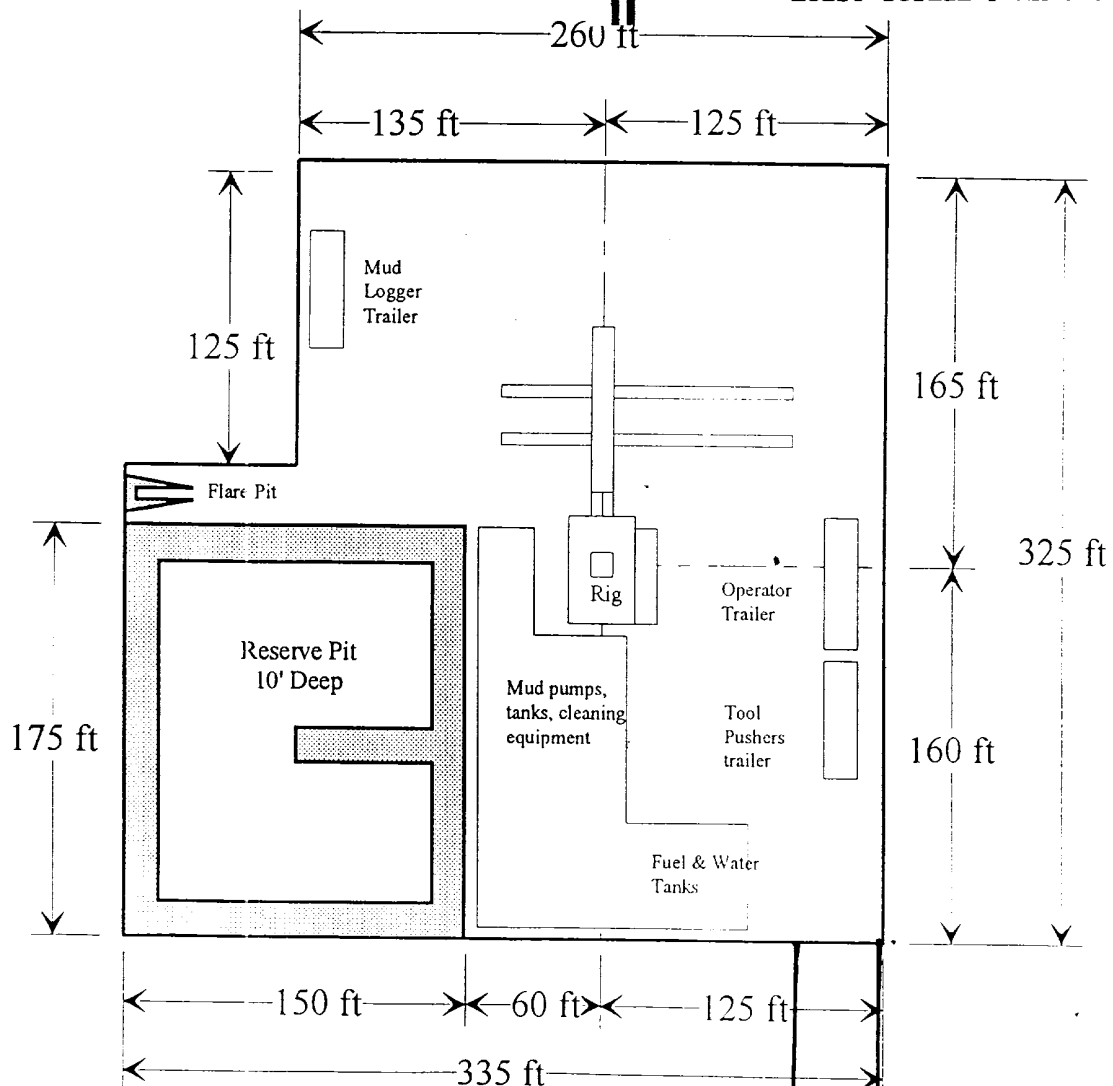
Up to 12,000'



YATES PETROLEUM CORPORATION

105 SOUTH 4TH STREET
ARTESIA, NEW MEXICO 88210

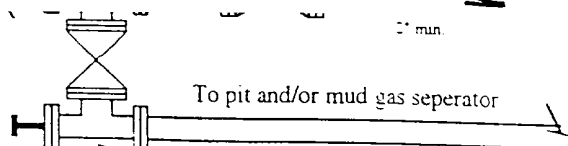
Leontodon "ASH" Federal Com. #1
990' FSL and 1980' FEL
Section 10, T9S-R26E
Chaves County, New Mexico
Lease Serial # NM-71747



Distance from Well Head to Reserve Pit will vary between rigs

The above dimension should be a maximum

2" min



2" min