

DISTRICT I
1625 N. French Dr., Hobbs, NM 88240

DISTRICT II
811 South First, Artesia, NM 88210

DISTRICT III
1000 Rio Brazos Rd., Artec, NM 87410

DISTRICT IV
2040 South Pacheco, Santa Fe, NM 87505

State of New Mexico
Energy, Minerals and Natural Resources Department

Form C-102
Revised March 17, 1999
Instruction on back
Submit to Appropriate District Office
State Lease - 4 Copies
Fee Lease - 3 Copies

OIL CONSERVATION DIVISION

P.O. Box 2088
Santa Fe, New Mexico 87504-2088

☐ AMENDED REPORT

WELL LOCATION AND ACREAGE DEDICATION PLAT

API Number	Pool Code	Well Name <i>Pecos Slope Abo</i> Wildcat Precambrian
Property Code	Property Name GRYNBERG "LZ" STATE	Well Number 8
OGRID No. 025575	Operator Name YATES PETROLEUM CORPORATION	Elevation 3887

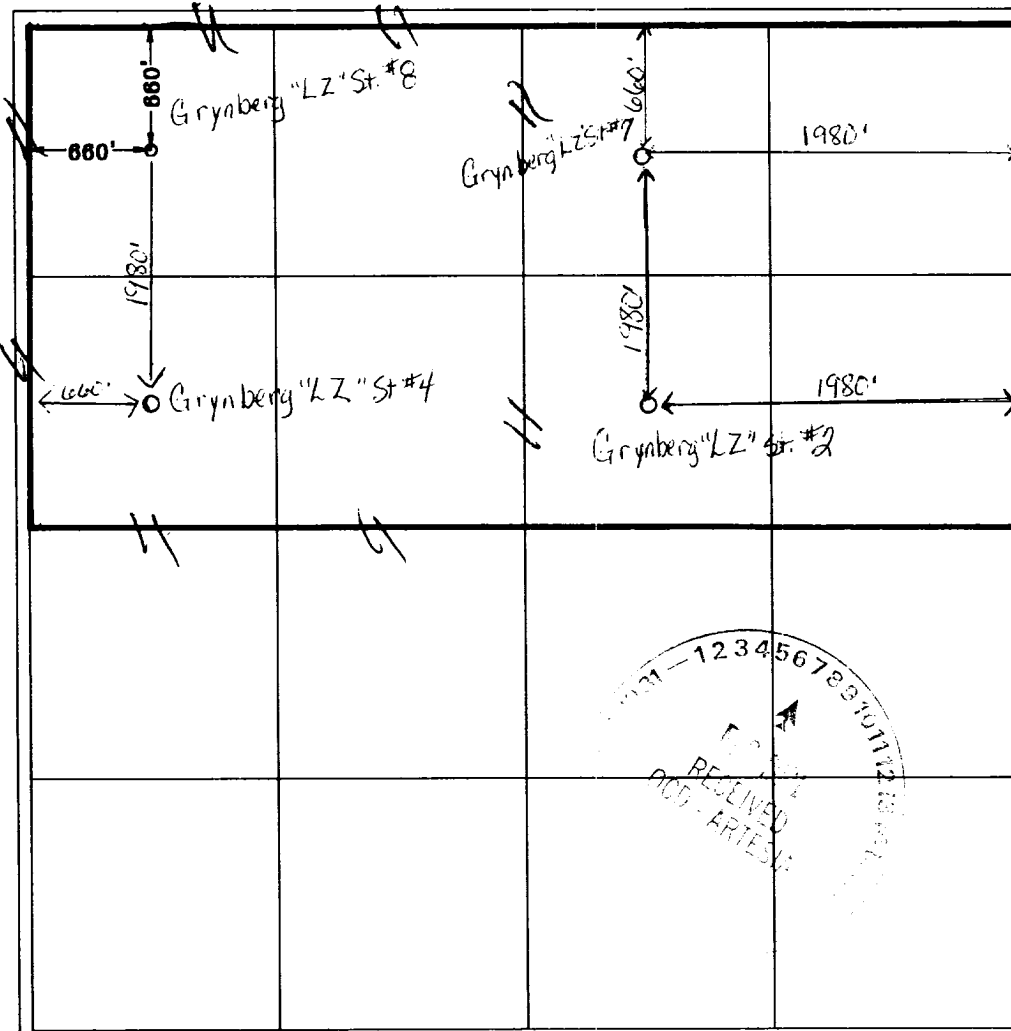
Surface Location

UL or lot No.	Section	Township	Range	Lot Id.	Feet from the	North/South line	Feet from the	East/West line	County
D	36	5S	24E		660	NORTH	660	WEST	CHAVES

Bottom Hole Location If Different From Surface

UL or lot No.	Section	Township	Range	Lot Id.	Feet from the	North/South line	Feet from the	East/West line	County
Dedicated Acres 320.00	Joint or Infill	Consolidation Code	Order No.						

NO ALLOWABLE WILL BE ASSIGNED TO THIS COMPLETION UNTIL ALL INTERESTS HAVE BEEN CONSOLIDATED
OR A NON-STANDARD UNIT HAS BEEN APPROVED BY THE DIVISION



OPERATOR CERTIFICATION

I hereby certify that the information contained herein is true and complete to the best of my knowledge and belief.

Pat Perez
Signature

Pat Perez
Printed Name

Regulatory Agent

Title
2-7-01
Date

SURVEYOR CERTIFICATION

I hereby certify that the well location shown on this plat was plotted from field notes of actual surveys made by me or under my supervision, and that the same is true and correct to the best of my belief.

1/03/2001

Date Surveyed

Signature & Seal of
Professional Surveyor

HERSCHEL L. LUGNES
NEW MEXICO
3640
Certificate No. Herschel Lugnes RLS 3640
GRYNBERG & W-L C/D-1
GENERAL SURVEYING COMPANY