

District I
1625 N. French Dr. Hobbs, NM 88240
District II
811 South First, Artesia, NM 88210
District III
1000 Rio Brazos Road, Aztec, NM 87410
District IV
2040 South Pacheco, Santa Fe, NM 87505

State of New Mexico
Energy Minerals and Natural Resources

Form C-101
Revised March 17, 1990

Oil Conservation Division
2040 South Pacheco
Santa Fe, NM 87505

Submit to appropriate District Office
State Lease - 6 Copies
Fee Lease - 5 Copies

☐ AMENDED REPORT

APPLICATION FOR PERMIT TO DRILL, RE-ENTER, DEEPEN, PLUGBACK, OR ADD A ZONE

Reliance Energy, Inc.
P. O. Box 10946
Midland, Texas 79702

OGRID Number
149441

API Number

30 - 005 - 63344

Property Code

26233

Property Name

Willow Spring "29" State

Well No.

3

Surface Location

UL or lot no	Section	Township	Range	Lot Idn	Feet from the	North/South line	Feet from the	East/West line	County
F	29	4S	25E		1980	North	1980	West	Chaves

Proposed Bottom Hole Location If Different From Surface

UL or lot no.	Section	Township	Range	Lot Idn	Feet from the	North/South line	Feet from the	East/West line	County

Proposed Pool 1

Pecos Slope Abo

Proposed Pool 2

Work Type Code	Well Type Code	Cable Rotary	Lease Type Code	Ground Level Elevation
N	G	R	S	3875'
Multiple	Proposed Depth	Formation	Contractor	Spud Date
N	4100	Abo		3-15-01

Proposed Casing and Cement Program

Hole Size	Casing Size	Casing weight/foot	Setting Depth	Sacks of Cement	Estimated TOC
14-3/4"	11-3/4"	42#	950'	350	surface
11"	8-5/8"	24#	1950'	350	tie-back
7-7/8"	5-1/2"	15.5#	4100'	350	3000'

Describe the proposed program. If this application is to DEEPEN or PLUG BACK, give the data on the present productive zone and proposed new productive zone.

Describe the blowout prevention program, if any. Use additional sheets if necessary.

Approximately 950' surface casing will be set and cemented to shut off gravel. 11" hole will be air drilled with intermediate casing set at 1950'. 7-7/8" hole will be air drilled to TD @ 4100'. Production casing will be set at TD and cemented. The Abo will be stimulated as needed.

BOP Program: 3000' psi blowout preventor will be installed on 8-5/8"; rotating head used will air drilling.

I hereby certify that the information given above is true and complete to the best of my knowledge and belief.

Signature: Clyde C. Wheeler by p.a.

Printed name: Clyde C. Wheeler

Title: Petroleum Engineer

Date: 2-26-01

Phone: (915) 683-4816

OIL CONSERVATION DIVISION

Approved by: ORIGINAL SIGNED BY TIM W. GUM
DISTRICT II SUPERVISOR

Title:

Approval Date: FEB 28 2001

Expiration Date: FEB 28 2002

Conditions of Approval:

Attached ☐

11 3/4"

NOTIFY OCD SPUD & TIME TO WITNESS
CEMENTING - WATER PROTECTION STRING

DISTRICT I
P. O. Box 1980
Hobbs, NM 88241-1980

State of New Mexico
Energy, Minerals, and Natural Resources Department

Form C-102
Revised 02-10-94

Instructions on back

DISTRICT II
P. O. Drawer DD
Artesia, NM 88211-0719

OIL CONSERVATION DIVISION

P. O. Box 2088
Santa Fe, New Mexico 87504-2088

Submit to the Appropriate
District Office
State Lease - 4 copies
Fee Lease - 3 copies

DISTRICT III
1000 Rio Brazos Rd.
Aztec, NM 87410

DISTRICT IV
P. O. Box 2088
Santa Fe, NM 87507-2088

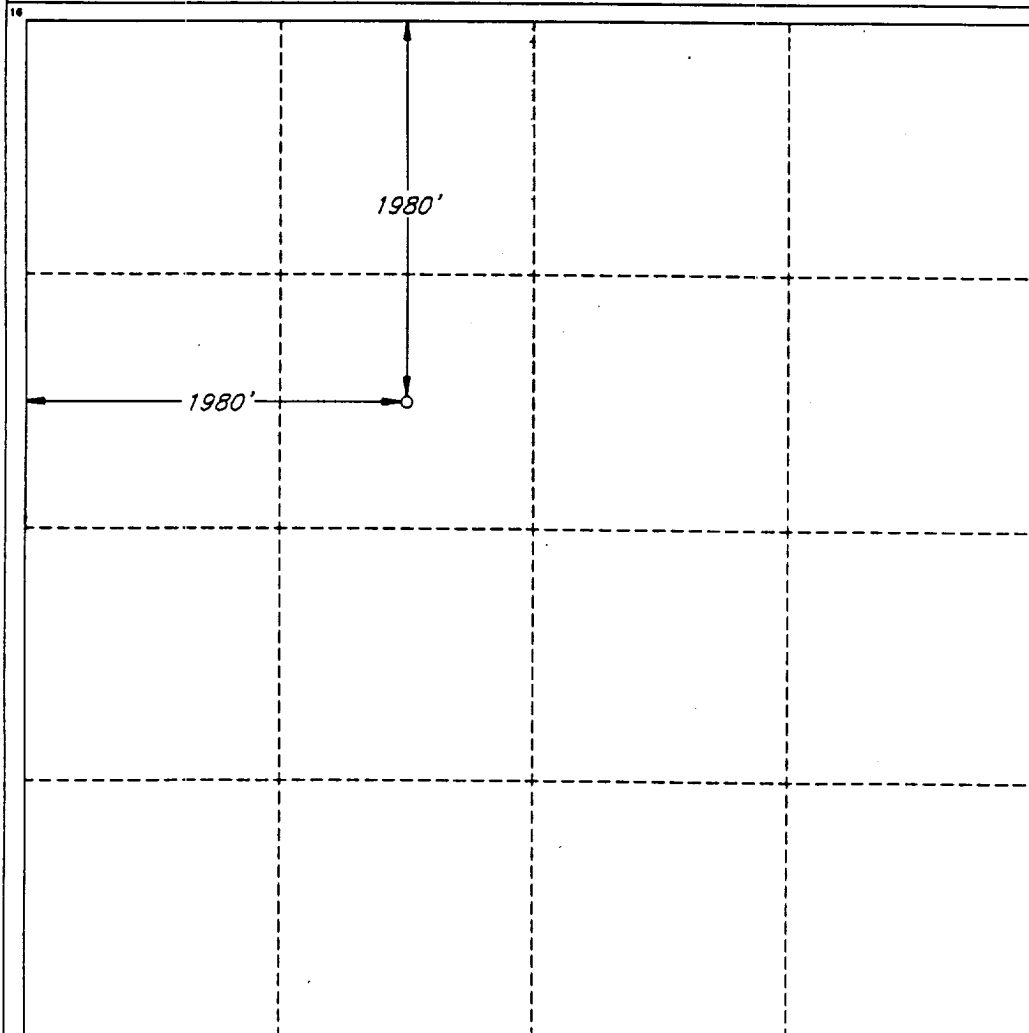
RECEIVED
OCD - ARTESIA

☐ AMENDED REPORT

WELL LOCATION AND ACREAGE DEDICATION PLAT

1 API Number		2 Pool Code		3 Pool Name Pecos Slope Abo					
4 Property Code		5 Property Name WILLOW SPRING '29' STATE						6 Well Number 3	
7 OGRID No. 149441		8 Operator Name RELIANCE ENERGY INCORPORATED						9 Elevation 3875'	
10 SURFACE LOCATION									
UL or lot no. F	Section 29	Township 4 SOUTH	Range 25 EAST, N.M.P.M.	Lot Ida	Feet from the 1980'	North/South line NORTH	Feet from the 1980'	East/West line WEST	County CHAVES
"BOTTOM HOLE LOCATION IF DIFFERENT FROM SURFACE									
UL or lot no.	Section	Township	Range	Lot Ida	Feet from the	North/South line	Feet from the	East/West line	County
12 Dedicated Acres 160.0		13 Joint or Infill N		14 Consolidation Code		15 Order No.			

NO ALLOWABLE WELL BE ASSIGNED TO THIS COMPLETION UNTIL ALL INTERESTS HAVE BEEN
CONSOLIDATED OR A NON-STANDARD UNIT HAS BEEN APPROVED BY THE DIVISION



OPERATOR CERTIFICATION

I hereby certify that the information
contained herein is true and complete
to the best of my knowledge and belief.

Signature

Clyde C. Wheeler by P.A.

Printed Name

CLYDE C WHEELER

Title

Petroleum Engineer

Date

2-26-01

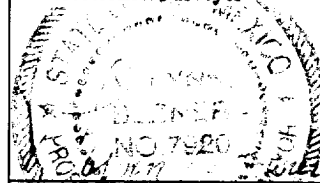
SURVEYOR CERTIFICATION

I hereby certify that the well
location shown on this plat was
plotted from field notes of actual
surveys made by me or under
my supervision, and that the
same is true and correct to the
best of my belief.

Date of Survey

FEBRUARY 19, 2001

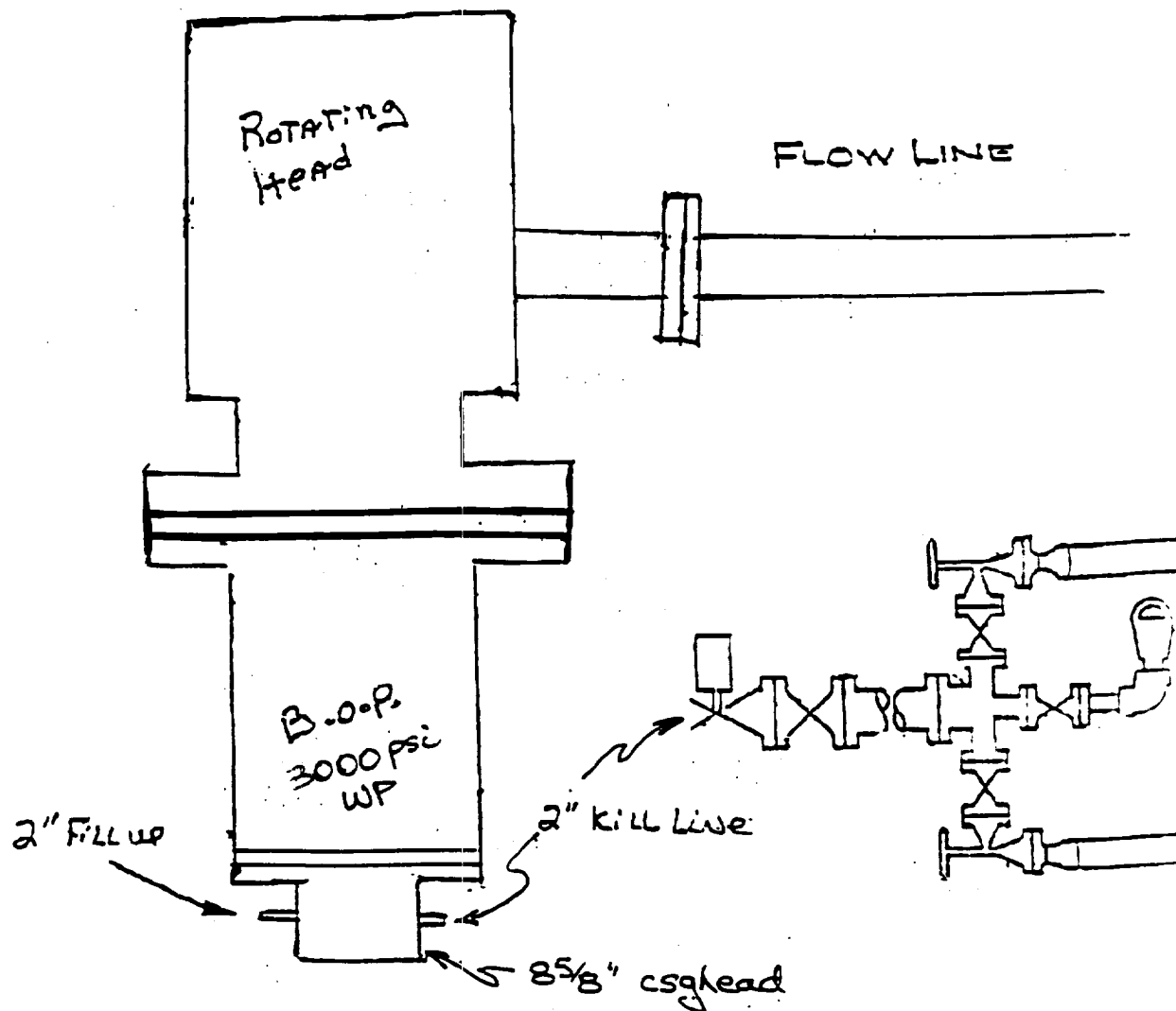
Signature and Seal of
Professional Surveyor



Certificate No.

V.L. BEZNER R.P.S. #7920

JOB #74256-2/200 NE/J.C.P.



Reliance Energy, Inc.
Willow Spring "29" State No.3
Chaves County, NM.