

District I
1625 N. French Dr., Hobbs, NM 88240
District II
811 South First, Artesia, NM 88210
District III
1000 Rio Brazos Road, Aztec, NM 87410
District IV
2040 South Pacheco, Santa Fe, NM 87505

State of New Mexico
Energy Minerals and Natural Resources

Form C-101
Revised March 17, 1990

Oil Conservation Division
2040 South Pacheco
Santa Fe, NM 87505

Submit to appropriate District Office
State Lease - 6 Copies
Fee Lease - 5 Copies

☐ AMENDED REPORT

APPLICATION FOR PERMIT TO DRILL, RE-ENTER, DEEPEN, PLUGBACK, OR ADD A ZONE

Operator Name and Address Reliance Energy, Inc. P. O. Box 10946 Midland, Texas 79702		OGRID Number 149441
Property Code 25855	Property Name Willow Spring "32" State	API Number 30 - 00S-63345
		Well No. 3

Surface Location

UL or lot no.	Section	Township	Range	Lot Idn	Feet from the	North-South line	Feet from the	East-West line	County
D	32	4S	25E		660	North	660	West	Chaves

Proposed Bottom Hole Location If Different From Surface

UL or lot no.	Section	Township	Range	Lot Idn	Feet from the	North-South line	Feet from the	East-West line	County

Proposed Pool 1

Pecos Slope Abo

Proposed Pool 2

Work Type Code N	Well Type Code G	Cable Rotary R	Lease Type Code S	Ground Level Elevation 3886'
Multiple	Proposed Depth 4100	Formation Abo	Contractor	Spud Date 3/15/01
N				

Proposed Casing and Cement Program

Hole Size	Casing Size	Casing weight/foot	Setting Depth	Sacks of Cement	Estimated TOC
14-3/4"	11-3/4"	42#	950'	350	surface
11"	8-5/8"	24#	1950'	350	tie-back
7-7/8"	5-1/2"	15.5#	4100'	350	3000'

Describe the proposed program. If this application is to DEEPEN or PLUG BACK, give the data on the present productive zone and proposed new productive zone.

Describe the blowout prevention program, if any. Use additional sheets if necessary.

Approximately 950' surface casing will be set and cemented to shut off gravel.
11" hole will be air drilled with intermediate casing set at 1950'. 7-7/8" hole will be air drilled to TD @ 4100'. Production casing will be set at TD and cemented. The Abo will be stimulated as needed.

BOP Program: 3000' psi blowout preventor will be installed on 8-5/8"; rotating head used will air drilling.

I hereby certify that the information given above is true and complete to the best of my knowledge and belief.		OIL CONSERVATION DIVISION	
Signature: <u>Clyde C. Wheeler</u>	Printed name: <u>Clyde C. Wheeler</u>	Approved by: <u>ORIGINAL SIGNED BY TIM W. GUM</u> <u>DISTRICT II SUPERVISOR</u>	Title: <u>BGM</u>
Title: <u>Petroleum Engineer</u>	Date: <u>2-26-01</u>	Approval Date: <u>FEB 28 2001</u>	Expiration Date: <u>FEB 28 2002</u>
Phone: <u>(915) 683-4816</u>	Conditions of Approval: <input type="checkbox"/> Attached <input type="checkbox"/>		

11 3/4"

NOTIFY OCD SPUD & TIME TO WITNESS
CEMENTING - WATER PROTECTION STRING

DISTRICT I
P. O. Box 1980
Hobbs, NM 88241-1980

State of New Mexico
Energy, Minerals, and Natural Resources Department

Form C-102
Revised 02-10-94

Instructions on back

DISTRICT II
P. O. Drawer DD
Artesia, NM 88211-0719

DISTRICT III
1000 Rio Brazos Rd.
Aztec, NM 87410

OIL CONSERVATION DIVISION
P. O. Box 2088
Santa Fe, New Mexico 87504-2088

Submit to the Appropriate
District Office
State Lease - 4 copies
Fee Lease - 3 copies

☐ AMENDED REPORT

DISTRICT IV
P. O. Box 2088
Santa Fe, NM 87507-2088

WELL LOCATION AND ACREAGE DEDICATION PLAT

1 API Number		2 Pool Code		3 Pool Name Pecos Slope Abo			
4 Property Code		5 Property Name WILLOW SPRING '32' STATE				6 Well Number 3	
7 OGRID No.		8 Operator Name RELIANCE ENERGY INCORPORATED				9 Elevation 3886'	

10 SURFACE LOCATION

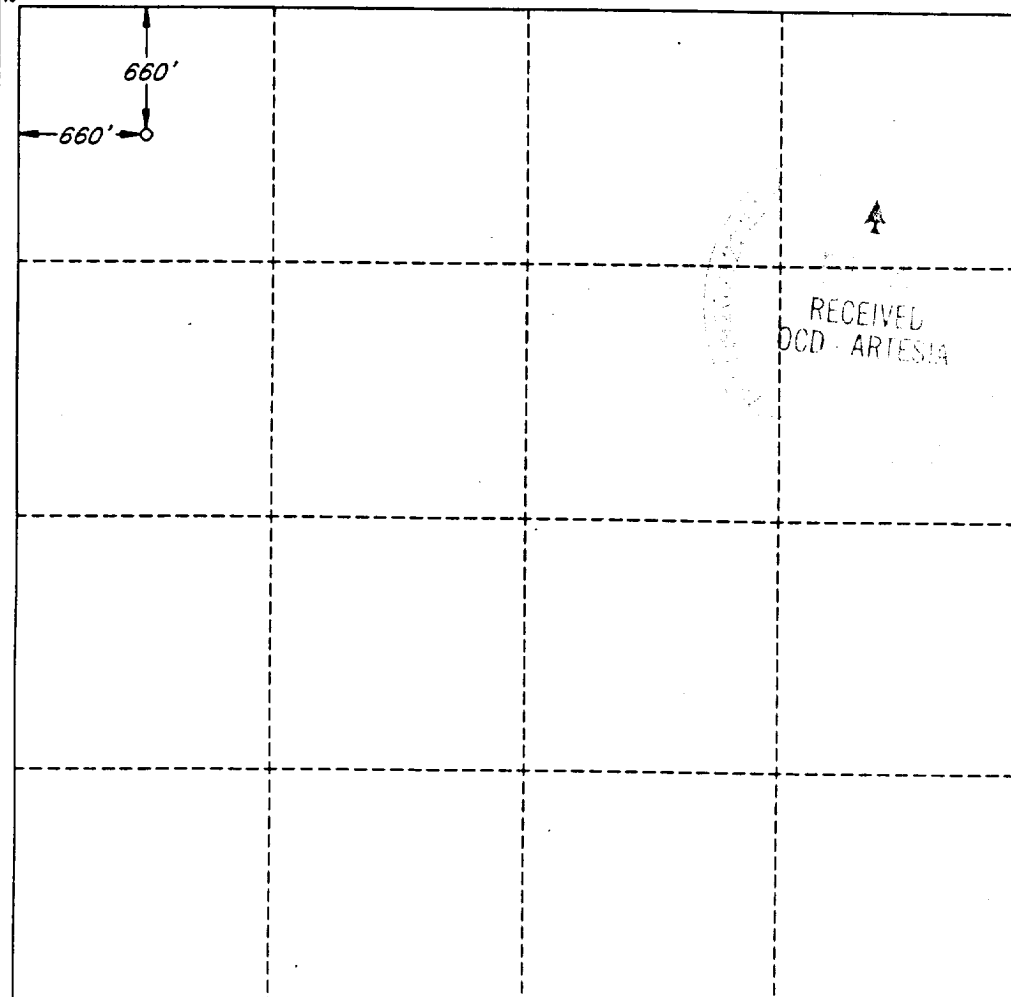
UL or lot no. D	Section 32	Township 4 SOUTH	Range 25 EAST, N.M.P.M.	Lot Ida	Feet from the 660'	North/South line NORTH	Feet from the 660'	East/West line WEST	County CHAVES
--------------------	---------------	---------------------	----------------------------	---------	-----------------------	---------------------------	-----------------------	------------------------	------------------

"BOTTOM HOLE LOCATION IF DIFFERENT FROM SURFACE

UL or lot no.	Section	Township	Range	Lot Ida	Feet from the	North/South line	Feet from the	East/West line	County
---------------	---------	----------	-------	---------	---------------	------------------	---------------	----------------	--------

12 Dedicated Acres 160.0	13 Joint or Infill N	14 Consolidation Code	15 Order No.
-----------------------------	-------------------------	-----------------------	--------------

NO ALLOWABLE WELL BE ASSIGNED TO THIS COMPLETION UNTIL ALL INTERESTS HAVE BEEN
CONSOLIDATED OR A NON-STANDARD UNIT HAS BEEN APPROVED BY THE DIVISION

16			
			

OPERATOR CERTIFICATION

I hereby certify that the information
contained herein is true and complete
to the best of my knowledge and belief.

Signature
Clyde C. Wheeler by pt.

Printed Name
Clyde C. Wheeler

Title
Petroleum Engineer

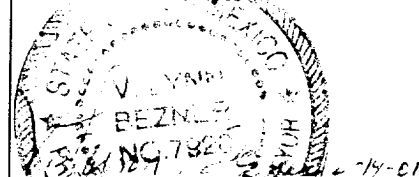
Date
2-26-01

SURVEYOR CERTIFICATION

I hereby certify that the well
location shown on this plat was
plotted from field notes of actual
surveys made by me or under
my supervision, and that the
same is true and correct to the
best of my belief.

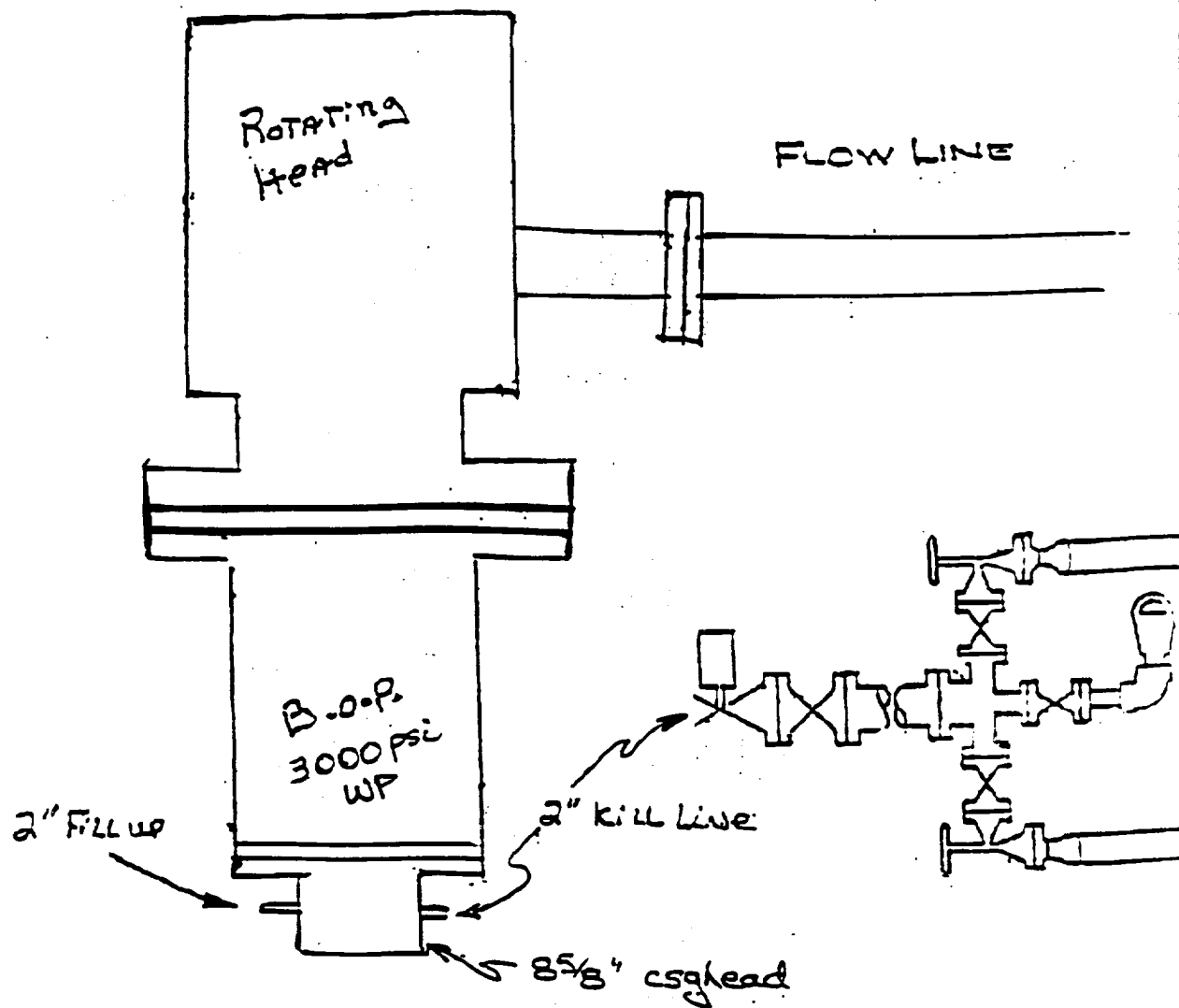
Date of Survey
FEBRUARY 19, 2001

Signature and Seal of
Professional Surveyor



Certificate No.
V.L. BEZNER R.P.S. #7920

JOB #74258-2/200 NE/J.C.P.



Reliance Energy, Inc
Willow Spring "32" State No. 3
Chaves County, NM.

CCW 2/15/01