

District I  
1625 N. French Dr., Hobbs, NM 88240  
District II  
811 South First, Artesia, NM 88210  
District III  
1000 Rio Brazos Road, Aztec, NM 87410  
District IV  
2040 South Pacheco, Santa Fe, NM 87505

State of New Mexico  
Energy Minerals and Natural Resources

Form C-101  
Revised March 17, 1999

Oil Conservation Division  
2040 South Pacheco  
Santa Fe, NM 87505

Submit to appropriate District Office  
State Lease - 6 Copies  
Fee Lease - 5 Copies

☐ AMENDED REPORT

APPLICATION FOR PERMIT TO DRILL, RE-ENTER, DEEPEN, PLUGBACK, OR ADD A ZONE

Operator Name and Address Reliance Energy, Inc. P. O. Box 10946 Midland, Texas 79702		OGRID Number 149441
Property Code 25891		API Number 30-005-63347
Property Name Willow Spring "33" State		Well No. 4

Surface Location

UL or lot no.	Section	Township	Range	Lot Idn	Feet from the	North/South line	Feet from the	East/West line	County
J	33	4S	25E		1980	South	1980	East	Chaves

Proposed Bottom Hole Location If Different From Surface

UL or lot no.	Section	Township	Range	Lot Idn	Feet from the	North/South line	Feet from the	East/West line	County

Proposed Pool 1

Pecos Slope Abo

Proposed Pool 2

Work Type Code	Well Type Code	Cable Rotary	Lease Type Code	Ground Level Elevation
N	G	R	S	3817'
Multiple	Proposed Depth	Formation	Contractor	Spud Date
N	4100	Abo		3-31-01

Proposed Casing and Cement Program

Hole Size	Casing Size	Casing weight/foot	Setting Depth	Sacks of Cement	Estimated TOC
14-3/4"	11-3/4"	42#	950'	350	surface
11"	8-5/8"	24#	1950'	350	tie-back
7-7/8"	5-1/2"	15.5#	4100'	350	3000'

Describe the proposed program. If this application is to DEEPEN or PLUG BACK, give the data on the present productive zone and proposed new productive zone.

Describe the blowout prevention program, if any. Use additional sheets if necessary.

Approximately 950' surface casing will be set and cemented to shut off gravel. 11" hole will be air drilled with intermediate casing set at 1950'. 7-7/8" hole will be air drilled to TD @ 4100'. Production casing will be set at TD and cemented. The Abo will be stimulated as needed.

BOP Program: 3000' psi blowout preventor will be installed on 8-5/8"; rotating head used will air drilling.

I hereby certify that the information given above is true and complete to the best of my knowledge and belief.

Signature: Clyde C. Wheeler by p.t.  
Printed name: Clyde C. Wheeler  
Title: Petroleum Engineer  
Date: 2-26-01  
Phone: (915) 683-4816

OIL CONSERVATION DIVISION	
Approved by: <u>ORIGINAL SIGNED BY TIM W. GUM</u>	BDO
DISTRICT II SUPERVISOR	
Title:	
Approval Date: <u>MAR - 5 2001</u>	Expiration Date: <u>MAR - 5 2002</u>
Conditions of Approval:	
Attached <input type="checkbox"/>	

NOTIFY OCD SPUD & TIME TO WITNESS  
CEMENTING- WATER PROTECTION STRING

DISTRICT I  
P. O. Box 1980  
Hobbs, NM 88241-1980

State of New Mexico  
Energy, Minerals, and Natural Resources Department

Form C-102  
Revised 02-10-94

Instructions on back

DISTRICT II  
P. O. Drawer DD  
Artesia, NM 88211-0719

OIL CONSERVATION DIVISION

P. O. Box 2088  
Santa Fe, New Mexico 87504-2088

Submit to the Appropriate  
District Office  
State Lease - 4 copies  
Fee Lease - 3 copies

DISTRICT III  
1000 Rio Brazos Rd.  
Aztec, NM 87410

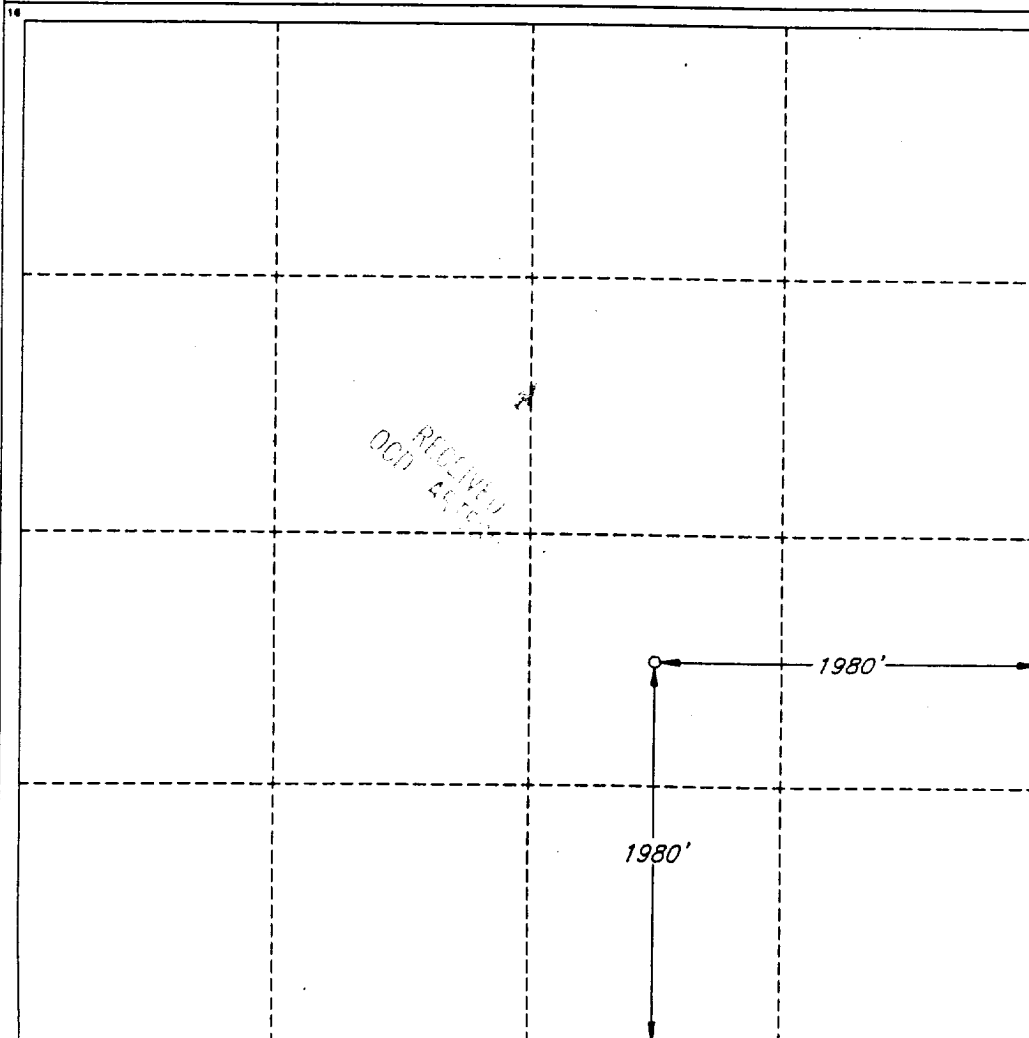
☐ AMENDED REPORT

DISTRICT IV  
P. O. Box 2088  
Santa Fe, NM 87507-2088

WELL LOCATION AND ACREAGE DEDICATION PLAT

1 API Number		2 Pool Code		3 Pool Name Pecos Slope Abo					
4 Property Code		5 Property Name WILLOW SPRING '33' STATE						6 Well Number 4	
7 OGRID No.		8 Operator Name RELIANCE ENERGY INCORPORATED						9 Elevation 3817'	
10 SURFACE LOCATION									
UL or lot no. J	Section 33	Township 4 SOUTH	Range 25 EAST, N.M.P.M.	Lot 1da	Feet from the 1980'	North/South line SOUTH	Feet from the 1980'	East/West line EAST	County CHAVES
11 BOTTOM HOLE LOCATION IF DIFFERENT FROM SURFACE									
UL or lot no.	Section	Township	Range	Lot 1da	Feet from the	North/South line	Feet from the	East/West line	County
12 Dedicated Acres 160.0		13 Joint or Infill N		14 Consolidation Code		15 Order No.			

NO ALLOWABLE WELL BE ASSIGNED TO THIS COMPLETION UNTIL ALL INTERESTS HAVE BEEN  
CONSOLIDATED OR A NON-STANDARD UNIT HAS BEEN APPROVED BY THE DIVISION



OPERATOR CERTIFICATION

I hereby certify that the information  
contained herein is true and complete  
to the best of my knowledge and belief.

Signature

Clyde C Wheeler by P.A.  
Printed Name

CLYDE C WHEELER

Title

Petroleum Engineer

Date

2-26-01

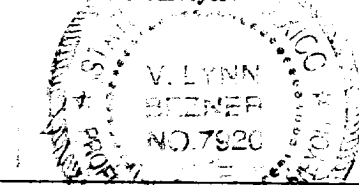
SURVEYOR CERTIFICATION

I hereby certify that the well  
location shown on this plat was  
plotted from field notes of actual  
surveys made by me or under  
my supervision, and that the  
same is true and correct to the  
best of my belief.

Date of Survey

FEBRUARY 19, 2001

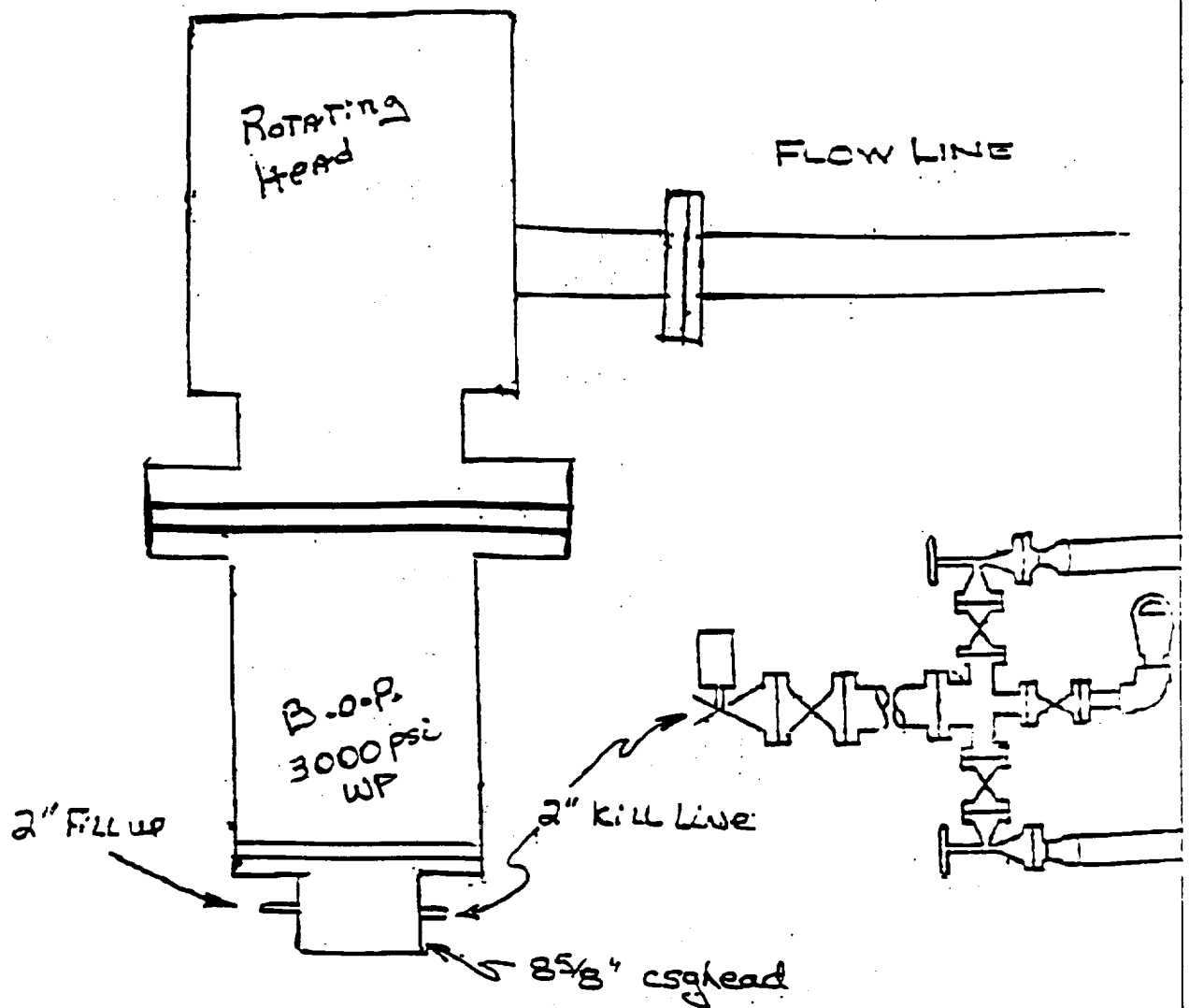
Signature and Seal of  
Professional Surveyor



Certificate No.

V. L. BEZNER R.P.S. #7920

JOB #74261-2/200 NE/J.C.P.



Reliance Energy, Inc  
Willow Spring "33" State No. 4  
Chaves County, NM.

CCW 2/15/01