

District I
1625 N. French Dr., Hobbs, NM 88240
District II
811 South First, Artesia, NM 88210
District III
1000 Rio Brazos Road, Aztec, NM 87410
District IV
1220 S. St. Francis Dr., Santa Fe, NM 87505

State of New Mexico
Energy Minerals and Natural Resources

Oil Conservation Division
1220 South St. Francis Dr.
Santa Fe, NM 87505

Form C-101
Revised March 17, 1999

Submit to appropriate District Office
State Lease - 6 Copies
Fee Lease - 5 Copies

RECEIVED
OCD - ARTESIA

☐ AMENDED REPORT

APPLICATION FOR PERMIT TO DRILL, RE-ENTER, DEEPEN, PLUGBACK, OR ADD A ZONE

¹ Operator Name and Address Pecos River Operating 550 West Texas, Suite 720, Midland, TX 79701		² OGRID Number 017081
		³ API Number 30- 005-63352
³ Property Code 008768	⁵ Property Name Railroad State	⁶ Well No. 2

⁷ Surface Location

UL or lot no.	Section	Township	Range	Lot Idn	Feet from the	North/South line	Feet from the	East/West line	County
M	2	8-S	26-E		660	South	660	West	Chaves

⁸ Proposed Bottom Hole Location If Different From Surface

UL or lot no.	Section	Township	Range	Lot Idn	Feet from the	North/South line	Feet from the	East/West line	County
⁹ Proposed Pool 1 Foot Ranch (Pecos River)					¹⁰ Proposed Pool 2 Pecos Slope (Abo)				

Wild cat; ~~Pecos River~~ Ordovician

¹¹ Work Type Code N	¹² Well Type Code G	¹³ Cable/Rotary R	¹⁴ Lease Type Code S	¹⁵ Ground Level Elevation 3796'
¹⁶ Multiple NO	¹⁷ Proposed Depth 6000'	¹⁸ Formation Pre-Cambrian	¹⁹ Contractor United Drilling	²⁰ Spud Date As soon as Practical

²¹ Proposed Casing and Cement Program

Hole Size	Casing Size	Casing weight/foot	Setting Depth	Sacks of Cement	Estimated TOC
12-1/4	8-5/8	24#	950	950	Circ
7-7/8	5-1/2	15.5#	6000	450	3000'

CEMENT TO COVER ALL OIL, GAS & WATER BEARING ZONES

²² Describe the prop

give the data on the present productive zone and proposed new productive zone.

Describe the blowout prevention program, if any. Use additional sheets if necessary.

Plan to drill to total depth of 6000' or basement.

All casing will be cemented and tested according to approved methods.

Well control equipment will be 11", 2M, double-ram BOP's, and will be tested prior to drilling below 8-5/8" casing.

²³ I hereby certify that the information given above is true and complete to the best of my knowledge and belief.

Signature: *William R. Huck*

Printed name: William R. Huck

Title: VP - Engr & Prod

Date: 03-12-01

Phone: 915-620-8480

682-2197

OIL CONSERVATION DIVISION

Approved by: ORIGINAL SIGNED BY TIM W. GUM
DISTRICT II SUPERVISOR

Title: Approval Date: MAR 14 2001 Expiration Date: MAR 14 2002

Conditions of Approval:

Attached ☐

DISTRICT II
P.O. Drawer DD, Artesia, NM 88211-0719

DISTRICT III
1000 Rio Brazos Rd., Artec, NM 87410

DISTRICT IV
P.O. BOX 2088, SANTA FE, N.M. 87504-2088

OIL CONSERVATION DIVISION
P.O. Box 2088
Santa Fe, New Mexico 87504-2088

☐ AMENDED REPORT

WELL LOCATION AND ACREAGE DEDICATION PLAT

API Number		Pool Code	Pool Name Foor Ranch (Pre-Permian)	
Property Code 008766	Property Name RAILROAD STATE			Well Number 2
OGRID No. 017081	Operator Name PECOS RIVER OPERATING CO.			Elevation 3796'

Surface Location

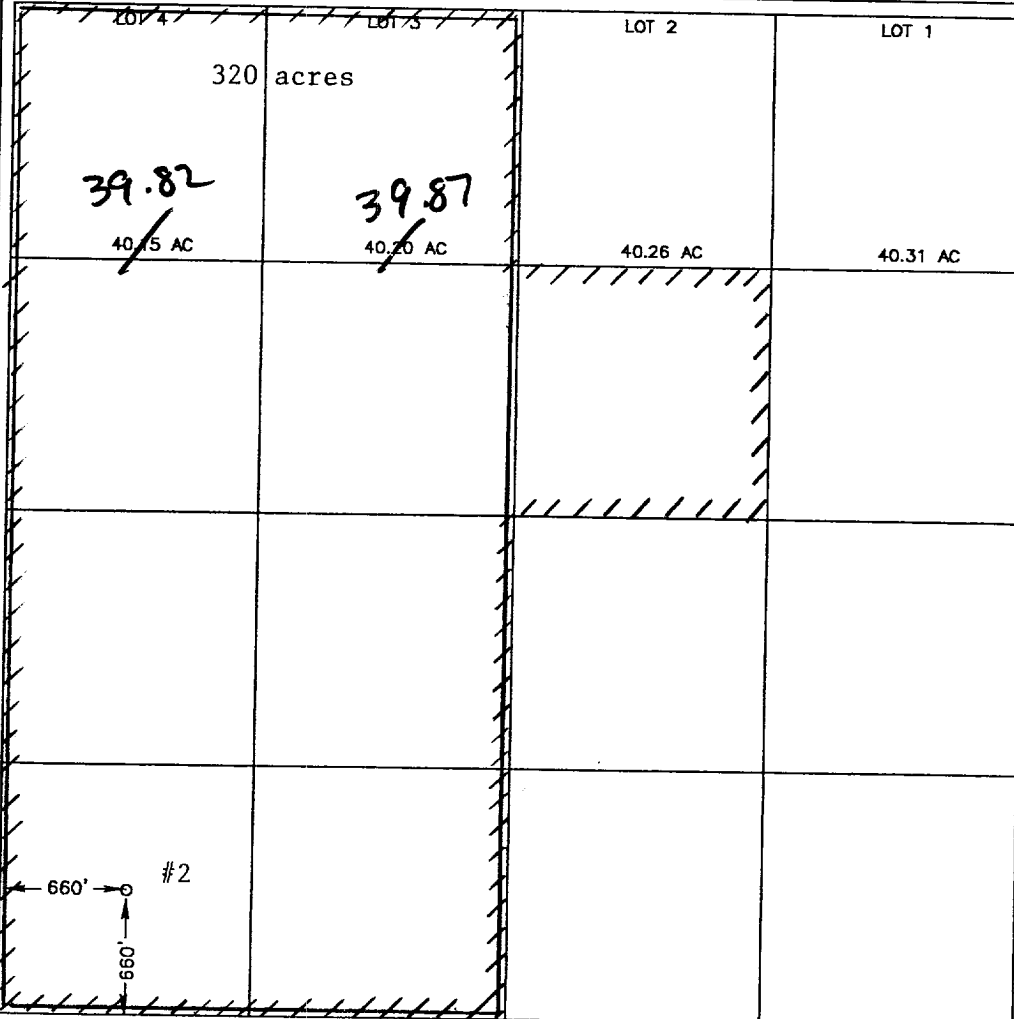
UL or lot No. M	Section 2	Township 8-S	Range 26-E	Lot Idn	Feet from the 660	North/South line SOUTH	Feet from the 660	East/West line WEST	County CHAVES
--------------------	--------------	-----------------	---------------	---------	----------------------	---------------------------	----------------------	------------------------	------------------

Bottom Hole Location If Different From Surface

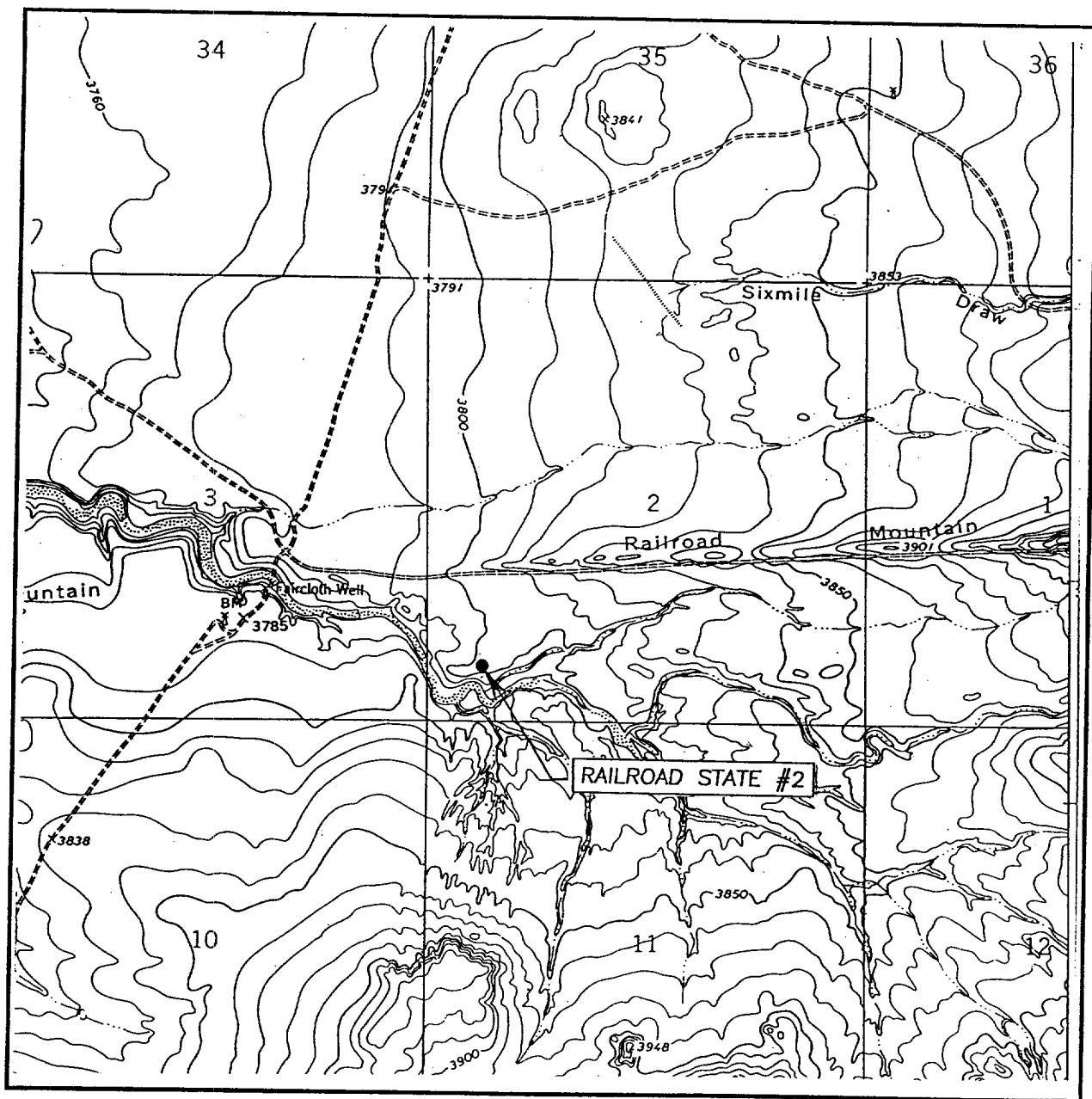
UL or lot No.	Section	Township	Range	Lot Idn	Feet from the	North/South line	Feet from the	East/West line	County
---------------	---------	----------	-------	---------	---------------	------------------	---------------	----------------	--------

Dedicated Acres 320 319.69	Joint or Infill	Consolidation Code	Order No.
--	-----------------	--------------------	-----------

NO ALLOWABLE WILL BE ASSIGNED TO THIS COMPLETION UNTIL ALL INTERESTS HAVE BEEN CONSOLIDATED
OR A NON-STANDARD UNIT HAS BEEN APPROVED BY THE DIVISION

				<p>OPERATOR CERTIFICATION</p> <p>I hereby certify the the information contained herein is true and complete to the best of my knowledge and belief.</p> <p><i>William R. Huck</i> Signature William R. Huck Printed Name VP Eengr & Prod Title 03-12-01 Date</p>	
<p>SURVEYOR CERTIFICATION</p> <p>I hereby certify that the well location shown on this plat was plotted from field notes of actual surveys made by me or under my supervision, and that the same is true and correct to the best of my belief.</p> <p>FEBRUARY 19, 2001</p> <p>Date Surveyed Signature & Seal of Professional Surveyor <i>Ronald J. Kidson</i> 01-11-0193</p> <p>Certificate No. RONALD J. KIDSON 3239 GARY KIDSON 12641</p>					

LOCATION VERIFICATION MAP



SCALE: 1" = 2000'

CONTOUR INTERVAL: 10'

EIGHTMILE DRAW, N.M.

SEC. 2 TWP. 8-S RGE. 26-E

SURVEY N.M.P.M.

COUNTY CHAVES

DESCRIPTION 660' FSL & 660' FWL

ELEVATION 3796'

OPERATOR PECOS RIVER OPERATING CO.

LEASE RAILROAD STATE

U.S.G.S. TOPOGRAPHIC MAP

EIGHTMILE DRAW, N.M.

JOHN WEST SURVEYING
HOBBS, NEW MEXICO
(505) 393-3117