

District I
1625 N. French Dr., Hobbs, NM 88240
District II
811 South First, Artesia, NM 88210
District III
1000 Rio Brazos Road, Aztec, NM 87410
District IV
2040 South Pacheco, Santa Fe, NM 87505

State of New Mexico
Energy Minerals and Natural Resources

Oil Conservation Division
2040 South Pacheco
Santa Fe, NM 87505

Form C-101
Revised March 17, 1999

Submit to appropriate District Office
State Lease - 6 Copies
Fee Lease - 5 Copies

☐ AMENDED REPORT

APPLICATION FOR PERMIT TO DRILL, RE-ENTER, DEEPEN, PLUGBACK, OR ADD A ZONE

¹ Operator Name and Address Reliance Energy, Inc. P.O. Box 10946 Midland, Texas 79702		² OGRID Number 149441
³ Property Code 26233	⁴ Property Name Willow Spring "29" State	⁵ API Number 30 - 005 - 63358
		⁶ Well No. 4

Surface Location

UL or lot no.	Section	Township	Range	Lot Idn	Feet from the	North/South line	Feet from the	East/West line	County
0	29	4S	25E		660	South	1980	East	Chaves

Proposed Bottom Hole Location If Different From Surface

UL or lot no.	Section	Township	Range	Lot Idn	Feet from the	North/South line	Feet from the	East/West line	County

⁷ Proposed Pool 1 Pecos Slope Abo	⁸ Proposed Pool 2
---	------------------------------

⁹ Work Type Code N	¹⁰ Well Type Code G	¹¹ Cable/Rotary R	¹² Lease Type Code S	¹³ Ground Level Elevation 3869'
¹⁴ Multiple N	¹⁵ Proposed Depth 4100'	¹⁶ Formation Abo	¹⁷ Contractor Can-Tex	¹⁸ Spud Date 4-30-01

Proposed Casing and Cement Program

Hole Size	Casing Size	Casing weight/foot	Setting Depth	Sacks of Cement	Estimated TOC
14-3/4"	11-3/4"	42#	950'	350	surface
11"	8-5/8"	24#	1950'	350	tie-back
7-7/8"	5-1/2"	15.5#	4100'	350	3000'

¹⁹ Describe the proposed program. If this application is to DEEPEN or PLUG BACK, give the data on the present productive zone and proposed new productive zone.

Describe the blowout prevention program, if any. Use additional sheets if necessary.

Approximately 950' surface casing will be set and cemented to shut off gravel.
11" hole will be air drilled with intermediate casing set at 1950'. 7-7/8" hole will be air drilled to TD @ 4100'. Production casing will be set at TD and cemented. The Abo will be stimulated as needed.

BOP Program: 3000' psi blowout preventor will be installed on 8-5/8"; rotating head used with air drilling.

²⁰ I hereby certify that the information given above is true and complete to the best of my knowledge and belief.		OIL CONSERVATION DIVISION	
Signature: <u>Clyde C. Wheeler</u>		Approved by: ORIGINAL SIGNED BY TIM W. GUM <u>BGM</u>	
Printed name: <u>Clyde C. Wheeler</u>		Title: DISTRICT II SUPERVISOR	
Title: <u>Petroleum Engineer</u>		Approval Date: MAR 22 2001 Expiration Date: MAR 22 2002	
Date: <u>3-15-2001</u>	Phone: <u>(915) 683-4816</u>	Conditions of Approval: Attached <input type="checkbox"/>	

NOTIFY OCD SPUD & TIME TO WITNESS
WATER PROTECTION STRING

Instructions on back

Submit to the Appropriate
District Office
State Lease - 4 copies
Fee Lease - 3 copies

DISTRICT II
P. O. Drawer DD
Artesia, NM 88211-0719

OIL CONSERVATION DIVISION

P. O. Box 2088
Santa Fe, New Mexico 87504-2088

☐ AMENDED REPORT

DISTRICT III
1000 Rio Brazos Rd.
Aztec, NM 87410

DISTRICT IV
P. O. Box 2088
Santa Fe, NM 87507-2088

WELL LOCATION AND ACREAGE DEDICATION PLAT

1 API Number		2 Pool Code 82730		3 Pool Name Pecos Slope Abo	
4 Property Code 26233		5 Property Name WILLOW SPRING '29' STATE			6 Well Number 4
7 OGRID No. 149441		8 Operator Name RELIANCE ENERGY INCORPORATED			9 Elevation 3869'

¹⁰ SURFACE LOCATION

UL or lot no.	Section	Township	Range	Lot Ida	Feet from the	North/South line	Feet from the	East/West line	County
0	29	4 SOUTH	25 EAST, N.M.P.M.		660'	SOUTH	1980'	EAST	CHAVES

"BOTTOM HOLE LOCATION IF DIFFERENT FROM SURFACE

UL or lot no.	Section	Township	Range	Lot Ida	Feet from the	North/South line	Feet from the	East/West line	County
---------------	---------	----------	-------	---------	---------------	------------------	---------------	----------------	--------

¹² Dedicated Acres 160.0	¹³ Joint or Infill N	¹⁴ Consolidation Code	¹⁵ Order No.
--	------------------------------------	----------------------------------	-------------------------

NO ALLOWABLE WELL BE ASSIGNED TO THIS COMPLETION UNTIL ALL INTERESTS HAVE BEEN CONSOLIDATED OR A NON-STANDARD UNIT HAS BEEN APPROVED BY THE DIVISION

OPERATOR CERTIFICATION

*I hereby certify that the information
contained herein is true and complete
to the best of my knowledge and belief.*

Signature

Clyde C. Wheeler

Printed Name _____

CLYDE C. WHEELER

Title

Petroleum Engineer

Date

3-1501

SURVEYOR CERTIFICATION

I hereby certify that the well location shown on this plat was plotted from field notes of actual surveys made by me or under my supervision, and that the same is true and correct to the best of my belief.

Date of Survey

FEBRUARY 19, 2001

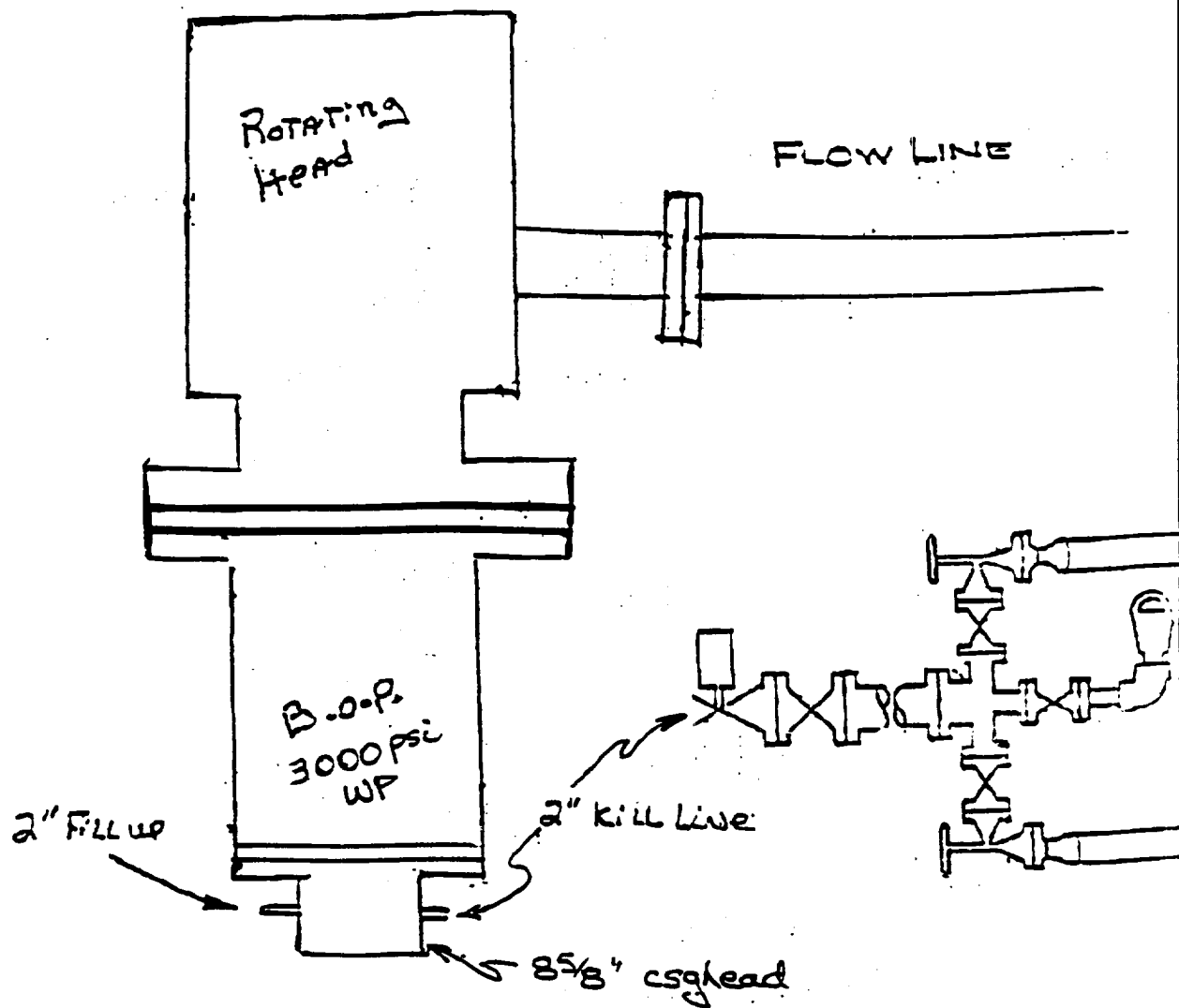
**Signature and Seal of
Professional Surveyor**

V. L. B. 2-19-01

Certificate No.

V. L. BEZNER R.P.S. #7920

JOB #74257-2/200 NE/J.C.P.



Reliance Energy, Inc.
Willow Spring "29" State No. 4
Chaves County, NM.