

UNITED STATES
DEPARTMENT OF THE INTERIOR
BUREAU OF LAND MANAGEMENT

OMB No. 1004-0136
Expires November 30, 2000

APPLICATION FOR PERMIT TO DRILL OR REENTER

1a. Type of Work: ☒ DRILL ☐ REENTER

b. Type of Well: ☐ Oil Well ☒ Gas Well ☐ Other ☐ Single Zone ☒ Multiple Zone

2. Name of Operator

Yates Petroleum Corporation

3A. Address 105 South Fourth Street
Artesia, New Mexico 88210

3b. Phone No. (include area code)
(505) 748-1471

4. Location of Well (Report location clearly and in accordance with any State requirements. *)

At surface 1000' FSL and 1000' FWL, Unit M U. E
At proposed prod. Zone same as above

14. Distance in miles and direction from nearest town or post office*

Approximately twenty-five (25) miles northeast of Roswell, New Mexico

15. Distance from proposed*
location to nearest
property or lease line, ft.
(Also to nearest drig. unit line, if any)

16. No. of Acres in lease
360

17. Spacing Unit dedicated to this well

320 acres - S/2

18. Distance from proposed location*
to nearest well, drilling, completed,
applied for, on this lease, ft.

19. Proposed Depth
5145'

20. BLM/BIA Bond No. on file

NM-2811

21. Elevations (Show whether DF, KDB, RT, GL, etc.)

3737' GL

22. Approximate date work will start*

ASAP

23. Estimated duration

30 Days

24. Attachments ~~ROSWELL COUNTRYSIDE WATER BASIN~~

The following, completed in accordance with the requirements of Onshore Oil and Gas Order No. 1, shall be attached to this form:

- Well plat certified by a registered surveyor.
- A Drilling Plan.
- A Surface Use Plan (if the location is on National Forest System Lands, the SUPO shall be filed with the appropriate Forest Service Office.
- Bond to cover the operations unless covered by an existing bond on file (see Item 20 above).
- Operator certification.
- Such other site specific information and/or plans as may be required by the authorized office.

25. Signature

Title:

Regulatory Agent

Approved by (Signature)

Title

Assistant Field Manager,
Acting Lands And Minerals

Name (Printed/Typed)

Pat Perez

Date

4-16-01

Name (Printed/Typed)

(ONG, SUI) RESIDENT & SUPER

Office

ROSWELL FIELD OFFICE

Date

JUL 0 2 01

Application approval does not warrant or certify that the applicant holds legal or equitable title to those rights in the subject lease which would entitle the applicant to conduct operations thereon.

Conditions of approval, if any, are attached.

Title 18 U.S.C. Section 1001 and Title 43 U.S.C. Section 1212, make it a crime for any person knowingly and willfully to make to any department or agency of the United States any false, fictitious or fraudulent statements or representations as to any matter within its jurisdiction.

*(Instructions on reverse)

ADDITIONAL COPIES TO
GENERAL INVESTIGATIONS AND
CRIMINAL INVESTIGATIONS
DIVISION

RECEIVED
2001 APR 16 PM 2:39
BUREAU OF LAND MGMT.
ROSWELL OFFICE

DISTRICT II
611 South First, Artesia, NM 86210

DISTRICT III
1000 Elc Brazos Rd., Astac, NM 87410

DISTRICT IV
2040 South Pacheco, Santa Fe, NM 87505

OIL CONSERVATION DIVISION

**P.O. Box 2088
Santa Fe, New Mexico 87504-2088**

☐ **AMENDED REPORT**

WELL LOCATION AND ACREAGE DEDICATION PLAT

API Number		Pool Code	Pool Name	
			Wildcat Precambrian	
Property Code	Property Name			Well Number
	FIVE MILE DRAW "X" FEDERAL COM.			2
OGED No.	Operator Name			Elevation
025575	YATES PETROLEUM CORPORATION			3737

Surface Location

UL or Lot No.	Section	Township	Range	Lot in	Feet from the	North/South line	Feet from the	East/West line	County
M	34	6S	25E		1000	SOUTH	1000	WEST	CHAVES

Bottom Hole Location If Different From Surface

U/L or Lot No.	Section	Township	Range	Lot Idn	Feet from the	North/South Line	Feet from the	East/West Line	County
Dedicated Acres 320	Joint or Infill	Consolidation Code	Order No.						

**NO ALLOWABLE WILL BE ASSIGNED TO THIS COMPLETION UNTIL ALL INTERESTS HAVE BEEN CONSOLIDATED
OR A NON-STANDARD UNIT HAS BEEN APPROVED BY THE DIVISION**

				<p>OPERATOR CERTIFICATION</p> <p><i>I hereby certify that the information contained herein is true and complete to the best of my knowledge and belief.</i></p> <p><u>Pat Perez</u> Signature</p> <p><u>Pat Perez</u> Printed Name</p> <p><u>Regulatory Agent</u> Title</p> <p><u>4-16-01</u> Date</p>
				<p>SURVEYOR CERTIFICATION</p> <p><i>I hereby certify that the well location shown on this plat was plotted from field notes of actual surveys made by me or under my supervision, and that the same is true and correct to the best of my belief.</i></p> <p><u>1/09/2001</u> Date Surveyed</p>
	<p>Fee Fee</p>	<p>NM-10588</p>		<p><u>Signature & Seal of Professional Surveyor</u></p> <p> </p> <p>Certificate No. <u>Herschel L. Jones RLS 3640</u> <u>5 MILE DRAW 2</u> <u>C/D-1</u> GENERAL SURVEYING COMPANY</p>

YATES PETROLEUM CORPORATION
Five Mile Draw "LX" Fed. Com.
 1000' FSL and 1000' FWL
 Section 34,-T6S-R25E
 Chaves County, New Mexico

1. The estimated tops of geologic markers are as follows:

San Andres	495'
Glorieta	1270'
Yeso	1380'
Tubb	2820'
Abo	3475'
Wolfcamp	4235'
Penn	4505"
Basement-Granite	4995'
TD	5145'

2. The estimated depths at which anticipated water, oil or gas formations are expected to be encountered:

Water: 150'-200'
 Oil or Gas: All potential zones.

3. Pressure Control Equipment: BOPE will be installed on the 11 3/4" casing and rated for 2000 BOP systems will be consistent with API RP 53. Pressure tests will be conducted before drilling out from under all casing strings which are set and cemented in place. Blowout Preventor controls will be installed prior to drilling the surface plug and will remain in use until the well is completed or abandoned. Preventors will be inspected and operated at least daily to ensure good mechanical working order, and this inspection recorded on the daily drilling report. See Exhibit B.

Auxiliary Equipment:

- A. Auxiliary Equipment: Kelly cock, pit level indicators, flow sensor equipment and a sub with full opening valve to fit the drill pipe and collars will be available on the rig floor in the open position at all times for use when kelly is not in use.

4. THE PROPOSED CASING AND CEMENTING PROGRAM:

- A. Casing Program: (All New)

<u>Hole Size</u>	<u>Casing Size</u>	<u>Wt./Ft</u>	<u>Grade</u>	<u>Coupling</u>	<u>Interval</u>	WITNESS
14 3/4"	11 3/4"	42#	H-40	ST&C	0-900'	
11"	8 5/8"	24#	J-55	ST&C	0-1500'	
7 7/8"	5 1/2"	15.5#	J-55	LT&C	0-5145'	

*8 5/8" will only be set if lost circulation is encountered

- Minimum Casing Design Factors: Collapse 1.125, Burst 1.0, Tensile Strength 1.8
- Yates Petroleum Corporation requests that a variance be granted in requiring the casing and BOPE to be tested to 2000 PSI to testing the casing and BOPE to 1000 PSI. The rig pumps will be used to test the casing and BOPE. Rig pumps used in this area cannot safely test above 1000 PSI. We would have to go to the greater expense of hiring an independent service to do the testing. Also, the maximum shut-in bottom hole pressure is 1100 PSI. Pressure at the surface is much less. Most of the time the Abo formation requires treatment before it flows.

A. CEMENTING PROGRAM:

Surface Casing: 350 sx Lite "C" (YLD 2.0 WT 12.5). Tail in with 200 sx "C"
+ 2% CaCL₂ (YLD 1.33 WT 14.8).

Intermediate Casing: 250 sx Class "C"(YLD 1.32 WT 14.8)

Production Casing: 500 sx Pecos Valley Lite "C" (YLD 1.34 WT 13.0). TOC 3100'.

5. MUD PROGRAM AND AUXILIARY EQUIPMENT:

<u>Interval</u>	<u>Type</u>	<u>Weight</u>	<u>Viscosity</u>	<u>Fluid Loss</u>
0-900'	FW GEL,Paper,LCM	8.6 - 9.6	32-36	N/C
900'-3580'	Cut Brine/Brine	9.0 -10.2	28	N/C
3580'-5145'	Starch/Salt Gel	9.3 -10.2	32-40	<6/cc

Sufficient mud material(s) to maintain mud properties, control lost circulation and contain a blow out will be available at the well site during drilling operations. Mud will be checked hourly by rig personnel.

6. EVALUATION PROGRAM:

Samples: 10' samples out from under surface casing.

Logging: CNL/LDT, W/NGT TD-Surf csg; with CNL/GR up to Surf; DLL/MS
FL TD-Surf csg: BHC Sonic TD-SURF CSG

Coring: None

DST's: As warranted.

7. ABNORMAL CONDITIONS, BOTTOM HOLE PRESSURE, AND POTENTIAL HAZARDS:

Anticipated BHP:

From: 0 TO: 900' Anticipated Max. BHP: 400 PSI

From: 900' TO: 5145' Anticipated Max. BHP: 2200 PSI

Abnormal Pressures Anticipated: None

Lost Circulation Zones Anticipated: None.

H₂S Zones Anticipated: None Anticipated

Maximum Bottom Hole Temperature: 110 F

8. ANTICIPATED STARTING DATE:

Plans are to drill this well as soon as possible after receiving approval. It should take approximately 25 days to drill the well with completion taking another 20 days.

MULTI-USE SURFACE USE AND OPERATIONS PLAN
Five Mile Draw "LX" Fed. Com. #2
1000' FSL and 1000' FWL
Section 34,-T6S-R25E
Chaves County, New Mexico

This plan is submitted with Form 3160-3, Application for Permit to Drill, covering the above described well. The purpose of this plan is to describe the location of the proposed well, the proposed construction activities and operations plan, the magnitude of the surface disturbance involved and the procedures to be followed in rehabilitating the surface after completion of the operations, so that a complete appraisal can be made of the environmental effect associated with the operations.

1. EXISTING ROADS:

Exhibit A is a portion of the BLM map showing the well and roads in the vicinity of the proposed location. The proposed wellsite is located approximately 25 miles northeast of Roswell, New Mexico and the access route to the location is indicated in red and green on Exhibit A.

DIRECTIONS:

Drive North from Roswell on Highway 285 for approx. 7 miles to One-Horse Road. Turn East for approx. 2.5 miles to Cottonwood Road. Go approx. 11.6 miles (Just thru cattleguard). Turn left (North) and go approx. 1.6 miles - Road turns west in front of Rattlesnake water well. Follow road approx. 2.2 miles and turn left at fork. Stay left on lease road and drive approx. 0.3 of a mile where the road is staked on the left (south) side going to the SW corner of the well location.

2. PLANNED ACCESS ROAD:

- A. The proposed new access will be approximately 800' in length from the point of origin to the southwest corner of the drilling pad. The road will lie in a north to south direction.
- B. The new road will be 14 feet in width (driving surface) and will be adequately drained to control runoff and soil erosion.
- C. Existing roads will be maintained in the same or better condition.

3. LOCATION OF EXISTING WELL:

- A. There is drilling activity within a one-mile radius of the wellsite.
- B. Exhibit D shows existing wells within a one-mile radius of the proposed wellsite.

4. LOCATION OF EXISTING AND/OR PROPOSED FACILITIES:

- A. There are production facilities on this lease at the present time.
- B. In the event that the well is productive, the necessary production facilities will be installed on the drilling pad. If the well is productive oil, a gas or diesel self-contained unit will be used to provide the necessary power. No power will be required if the well is productive of gas.

5. LOCATION AND TYPE OF WATER SUPPLY:

- A. It is planned to drill the proposed well with a fresh water system. The water will be obtained from commercial sources and will be hauled to the location by truck over the existing and proposed roads shown in Exhibit A.

6. SOURCE OF CONSTRUCTION MATERIALS:

Dirt contractor will locate nearest pit and obtain any permits and materials needed for construction.

7. METHODS OF HANDLING WASTE DISPOSAL:

- A. Drill cuttings will be disposed of in the reserve pits.
- B. Drilling fluids will be allowed to evaporate in the reserve pits until the pits are dry.
- C. Water produced during operations will be collected in tanks until hauled to an approved disposal system, or separate disposal application will be submitted.
- D. Oil produced during operations will be stored in tanks until sold.
- E. Current laws and regulations pertaining to the disposal of human waste will be complied with.
- F. All trash, junk, and other waste materials will be contained in trash cages or bins to prevent scattering and will be removed and deposited in an approved sanitary land fill. Burial on site is not approved.

8. ANCILLARY FACILITIES:

Yates Petroleum Corporation wishes to run a 300' on lease 2" X-42 buried steel natural gas pipeline to connect the Five Mile Draw "LX" #2 well and tie into existing pipeline between the Powers "OL" #1 and the Finley #1Y wells. See Exhibit "A" Attached.

9. WELLSITE LAYOUT:

- A. Exhibit C shows the relative location and dimensions of the well pad, the reserve pits, the location of the drilling equipment, rig orientation and access road approach.
- B. The reserve pits will be plastic lined.
- C. A 400' x 400' area has been staked and flagged.

10. PLANS FOR RESTORATION:

- A. After finishing drilling and/or completion operations, all equipment and other material not needed for further operations will be removed. The location will be cleaned of all trash and junk to leave the wellsite in as aesthetically pleasing a condition as possible.
- B. Unguarded pits, if any, containing fluids will be fenced until they have dried and been leveled.
- C. If the proposed well is non-productive, all rehabilitation and/or vegetation requirements of the Bureau of Land Management will be complied with and will be accomplished as expeditiously as possible. All pits will be filled level after they have evaporated and dried.

11. SURFACE OWNERSHIP: Cottonwood Ranch
Marie Haumont

12. OTHER INFORMATION:

- A. Topography: Refer to the existing archaeological report for a description of the topography, flora, fauna, soil characteristics, dwellings, historical and cultural sites.
- B. The primary surface use is for grazing.

13. OPERATOR'S REPRESENTATIVE:


A. Through A.P.D. Approval:
Pat Perez, Permit Agent
Yates Petroleum Corporation
105 South Fourth Street
Artesia, New Mexico 88210
Phone (505) 748-1471

B. Through Drilling, Completions & Prod.
Pinson McWhorter, Operations Manager
Yates Petroleum Corporation
105 South Fourth Street
Artesia, New Mexico 88210
Phone (505) 748-1471

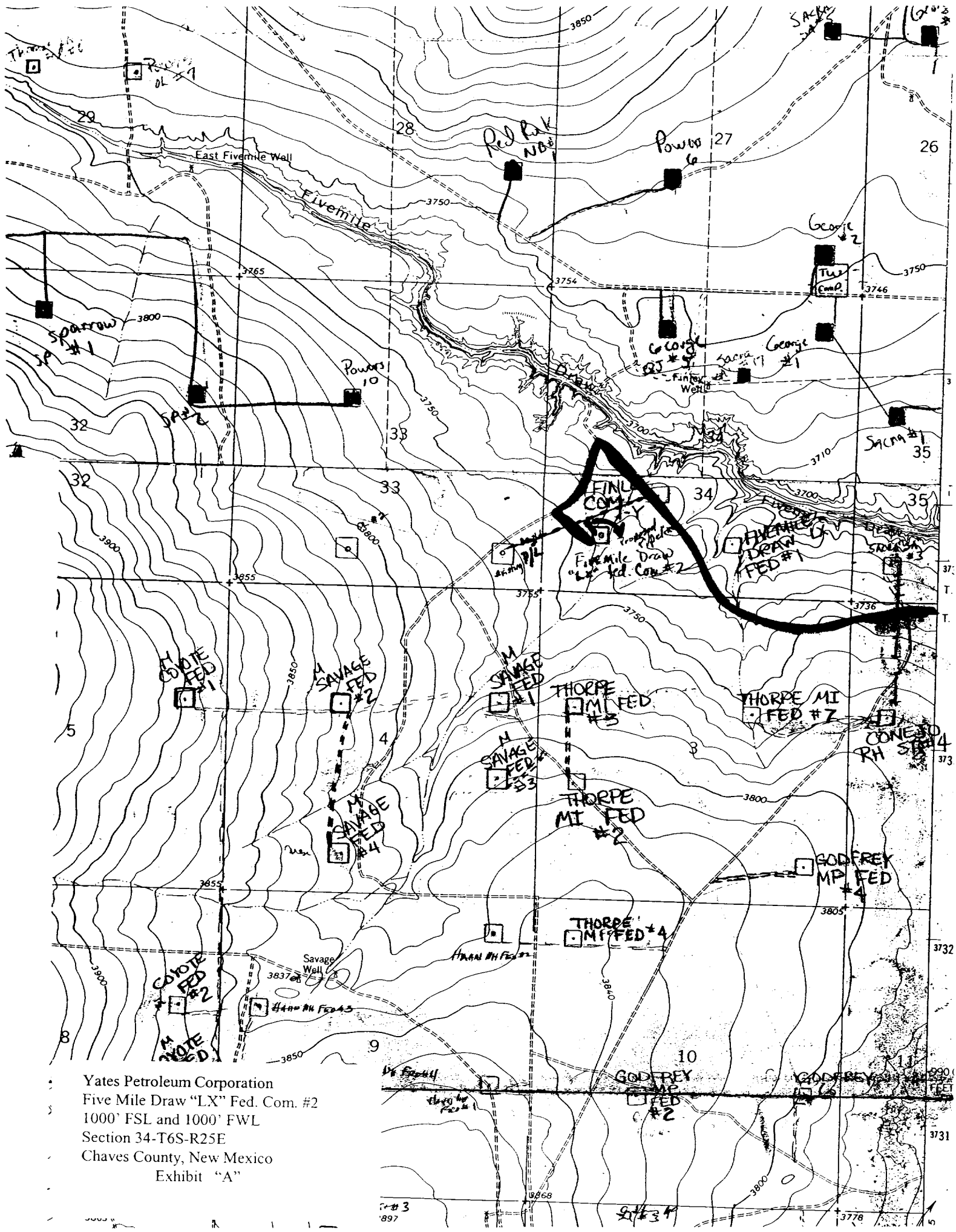
14. CERTIFICATION:

I hereby certify that I, or persons under my direct supervision, have inspected the proposed drill site and access route, that I am familiar with the conditions which presently exist; that the statements made in this plan are to the best of my knowledge, true and correct; and , that the work associated with the operations proposed herein will be performed by Yates Petroleum Corporation and its contractors and subcontractors in conformity with this plan and the terms and conditions under which it is approved. This statement is subject to the provisions of 18 U.S.C. 1001 for the filing of a false statement.

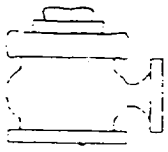
April 16, 2001



Regulatory Agent



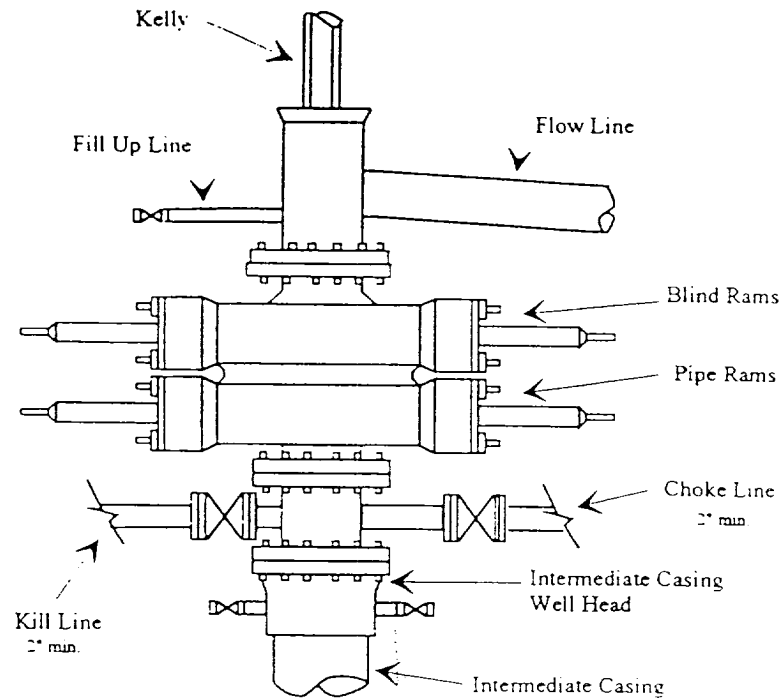
Yates Petroleum Corporation
Five Mile Draw "LX" Fed. Com. #2
1000' FSL and 1000' FWL
Section 34-T6S-R25E
Chaves County, New Mexico
Exhibit "A"



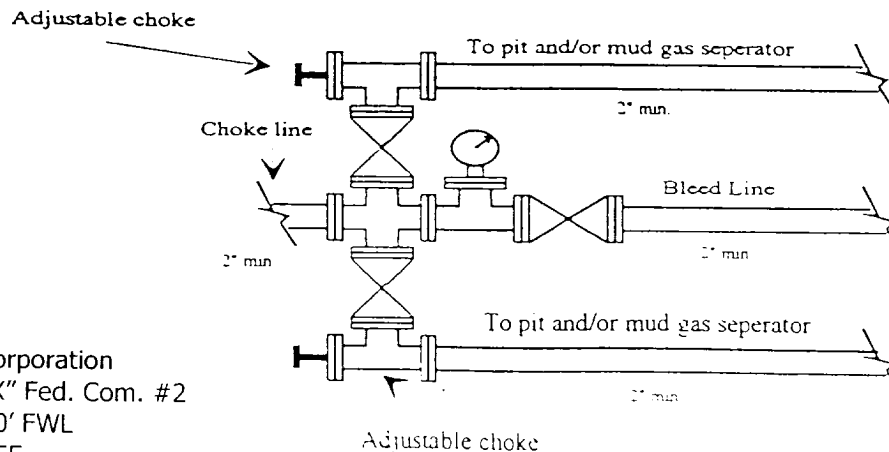
Yates Petroleum Corporation

BOP-2

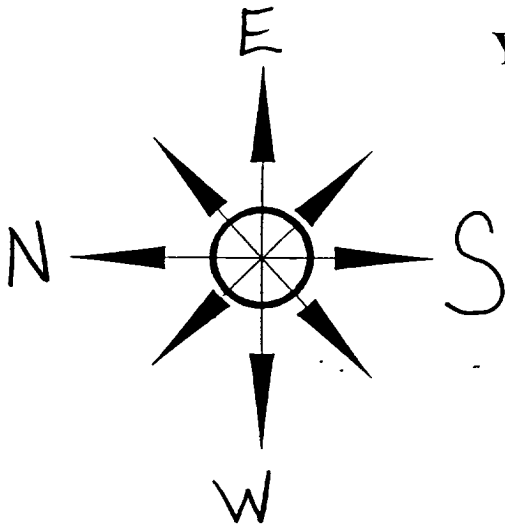
Typical 2,000 psi Pressure System Schematic Double Ram Preventer Stack



Typical 2,000 psi choke manifold assembly with at least these minimum features



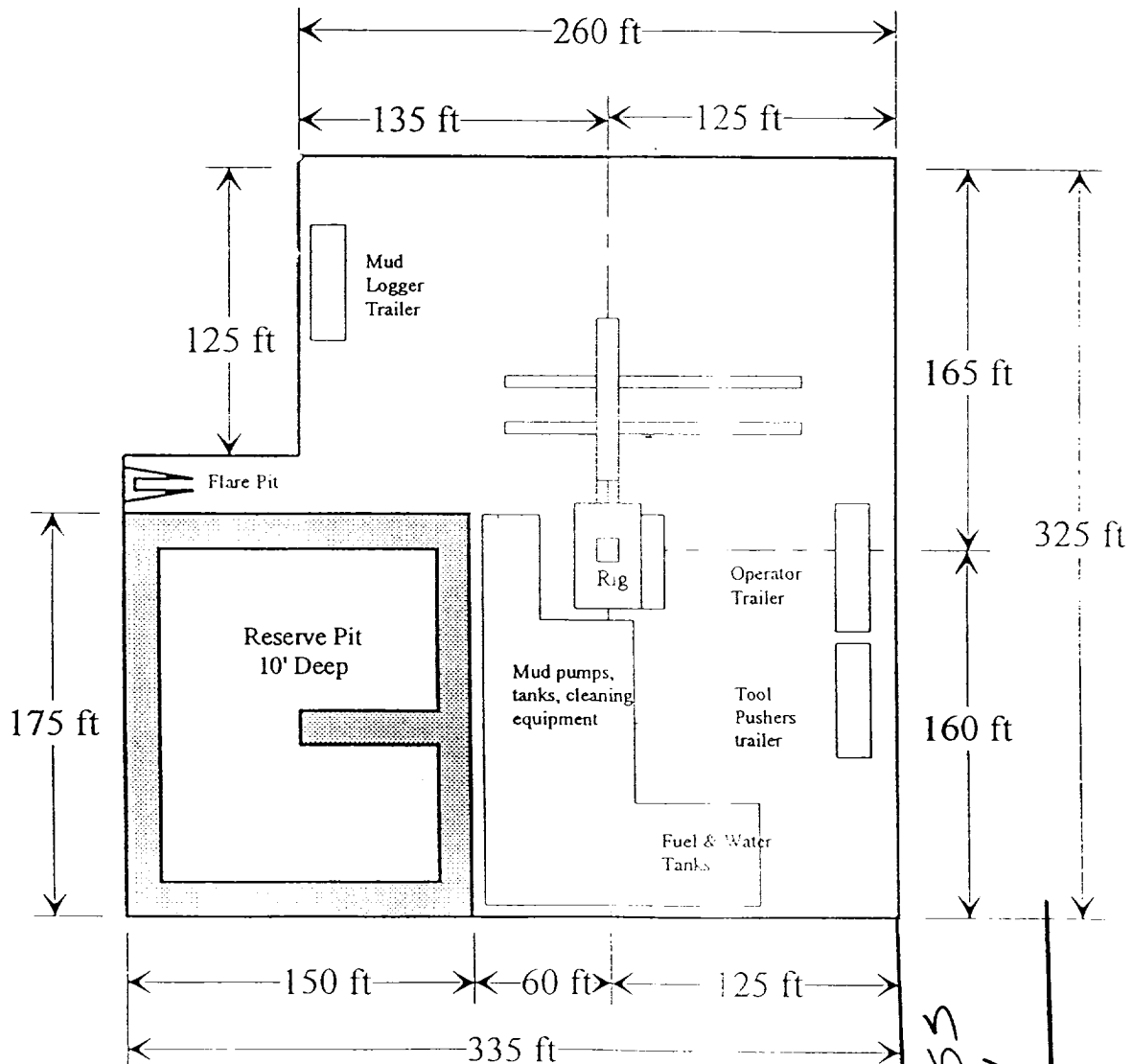
Yates Petroleum Corporation
Five Mile Draw "LX" Fed. Com. #2
1000' FSL and 1000' FWL
Section 34-T6S-R25E
Chaves County, New Mexico



Yates Petroleum Corporation

Location Layout for Permian Basin

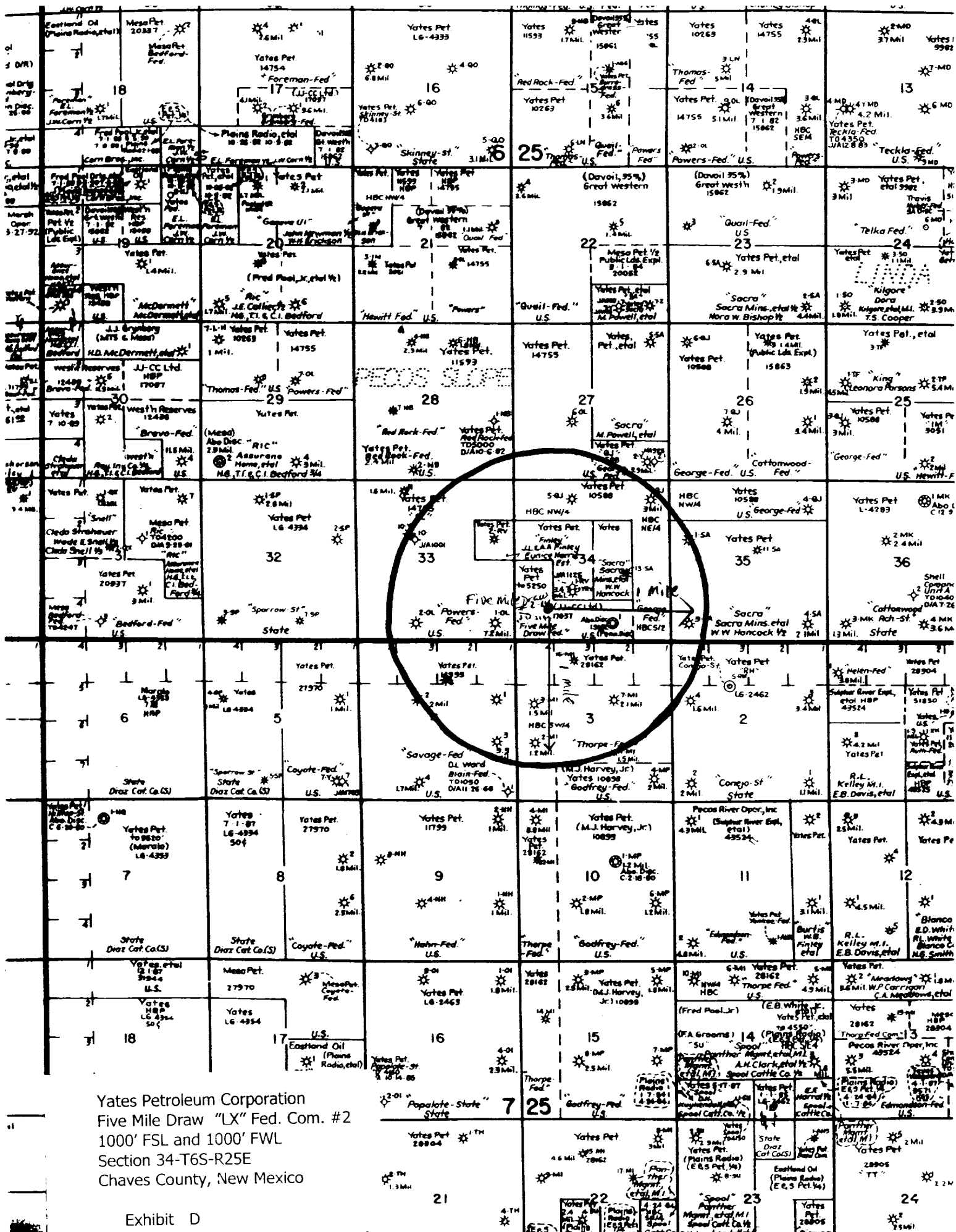
Up to 12,000'



Yates Petroleum Corporation
 Five Mile Draw "LX" Fed. Com. #2
 1000' FSL and 1000' FWL
 Section 34-T6S-R25E
 Chaves County, New Mexico

Distance from Well
 Head to Reserve Pit
 will vary between rigs

The above dimension
 should be a maximum



Yates Petroleum Corporation
Five Mile Draw "LX" Fed. Com. #2
1000' FSL and 1000' FWL
Section 34-T6S-R25E
Chaves County, New Mexico