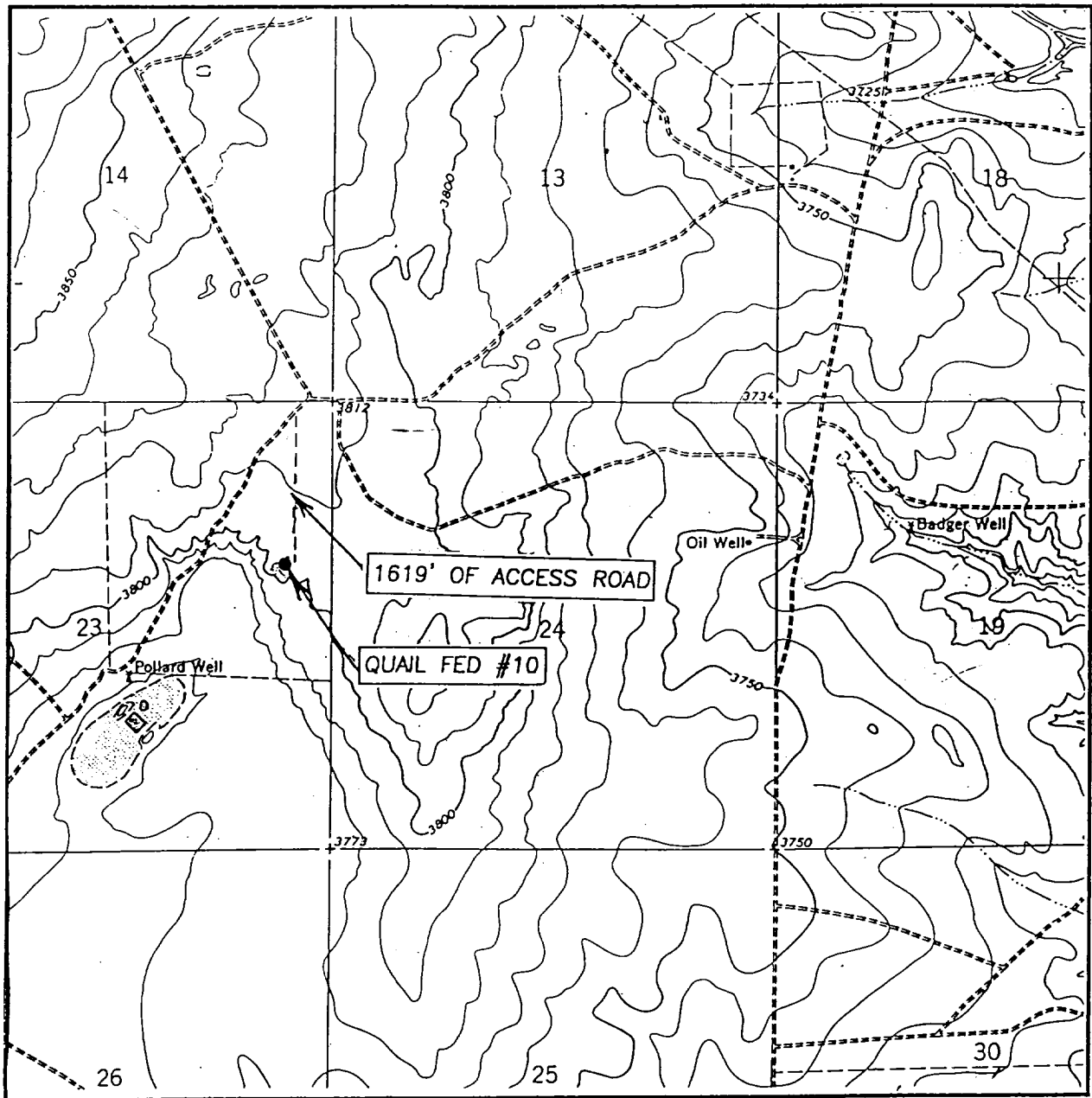


# LOCATION VERIFICATION MAP



SCALE: 1" = 2000'

CONTOUR INTERVAL: 10'

COTTONWOOD DRAW, N.M.

SEC. 23 TWP. 6-S RGE. 25-E

SURVEY N.M.P.M.

COUNTY CHAVES

DESCRIPTION 1980' FNL & 560' FEL

ELEVATION 3801'

OPERATOR GREAT WESTERN DRILLING

LEASE QUAIL FEDERAL

U.S.G.S. TOPOGRAPHIC MAP

COTTONWOOD DRAW, N.M.

JOHN WEST SURVEYING  
HOBBS, NEW MEXICO  
(505) 393-3117