



RECEIVED  
2021 NOV -6 PM 1:23  
FBI NEW YORK

				<p><b>OPERATOR CERTIFICATION</b></p> <p><i>I hereby certify the the information contained herein is true and complete to the best of my knowledge and belief.</i></p> <p><u>Clifton R. May</u> Signature</p> <p><u>Clifton R. May</u> Printed Name</p> <p><u>Regulatory Agent</u> Title</p> <p><u>11-05-01</u> Date</p>
				<p><b>SURVEYOR CERTIFICATION</b></p> <p><i>I hereby certify that the well location shown on this plat was plotted from field notes of actual surveys made by me or under my supervision, and that the same is true and correct to the best of my belief.</i></p> <p><u>10/30/2001</u> Date Surveyed</p> <p><u>Herschel L. Jones</u> Signature &amp; Seal of Professional Surveyor</p> <p><u>3640</u> Certificate No. Herschel L. Jones RLS 3640</p> <p>GENERAL SURVEYING COMPANY</p>
Lot 3	Well #2	NM-54988	<p>N.33°48'27.0" W.104°19'49.5"</p> <p>3745 3723</p> <p>3732 3714</p> <p>860'</p> <p>1930'</p>	
Proposed Lot 4 Well #3		Well #1		

**YATES PETROLEUM CORPORATION**  
**Getty "PS" 7 Federal #4**  
1930' FSL and 860' FEL  
Section 7-T6S-R26E  
Chaves County, New Mexico

1. The estimated tops of geologic markers are as follows:

San Andres	640'
Glorieta	1540'
Yeso	1640'
Tubb	3055'
Abo	3690'
Wolfcamp	4370'
Basement - Granite	5300'
TD	5450'

2. The estimated depths at which anticipated water, oil or gas formations are expected to be encountered:

Water: 150'-200'  
Oil or Gas: All potential zones.

3. Pressure Control Equipment: BOPE will be installed on the 11 3/4" casing and rated for 2000 BOP systems will be consistent with API RP 53. Pressure tests will be conducted before drilling out from under all casing strings, which are set and cemented in place. Blowout Preventor controls will be installed prior to drilling the surface plug and will remain in use until the well is completed or abandoned. Preventors will be inspected and operated at least daily to ensure good mechanical working order, and this inspection recorded on the daily drilling report. See Exhibit B.

**Auxiliary Equipment:**

- A. Auxiliary Equipment: Kelly cock, pit level indicators, flow sensor equipment and a sub with full opening valve to fit the drill pipe and collars will be available on the rig floor in the open position at all times for use when kelly is not in use.

4. THE PROPOSED CASING AND CEMENTING PROGRAM:

- A. Casing Program: (All New)

<u>Hole Size</u>	<u>Casing Size</u>	<u>Wt./Ft</u>	<u>Grade</u>	<u>Coupling</u>	<u>Interval</u>
14 3/4"	11 3/4"	42#	H-40	ST&C	0-900'
11	8 5/8"**	24#	J-55	ST&C	0-1500'
7 7/8"	5 1/2"	15.5#	J-55	ST&C	0-5450'

\*8 5/8" will only be set if lost circulation is encountered

1. Minimum Casing Design Factors: Collapse 1.125, Burst 1.0, and Tensile Strength 1.8
2. Yates Petroleum Corporation requests that a variance be granted in requiring the casing and BOPE to be tested to 2000 PSI to testing the casing and BOPE to 1000 PSI. The rig pumps will be used to test the casing and BOPE. Rig pumps used in this area cannot safely test above 1000 PSI. We would have to go to the greater expense of hiring an independent service to do the testing. Also, the bottom hole pressure in this field is proven to be near 1000 PSI. Pressure at the surface is much less. We feel that a 1000 PSI test will demonstrate that the BOPE is functioning properly, and in the unlikely event of a gas influx that the BOPE would be sufficient to control the well.

B. CEMENTING PROGRAM:

Surface Casing: 350 sx Lite "C" (YLD 2.0 WT 12.5). Tail in with 200 sx "C"  
+ 2% CaCL<sub>2</sub> (YLD 1.32 WT 15.6).

Intermediate Casing: 250 sx Class C+2% CaCL<sub>2</sub> (YLD 1.32 WT 14.8)

Production Casing: 500 sx Pecos Valley Lite (YLD 1.34 WT 13.0). TOC 3100'.

5. MUD PROGRAM AND AUXILIARY EQUIPMENT:

<u>Interval</u>	<u>Type</u>	<u>Weight</u>	<u>Viscosity</u>	<u>Fluid Loss</u>
0-900'	FW GEL,Paper,LCM	8.6 - 9.0	32-36	N/C
900'-3660'	Cut Brine/Brine	9.0 - 10.2	28	N/C
3660'-5450'	Salt Gel/Starch	9.3 - 10.2	32-40	<6/cc

Sufficient mud material(s) to maintain mud properties, control lost circulation and contain a blow out will be available at the well site during drilling operations. Mud will be checked hourly by rig personnel.

6. EVALUATION PROGRAM:

Samples: 10' samples out from under surface casing.

Logging: Platform Express CNL/LDT, W/NGT TD -Surf csg; with GR/CNL up to Surf:  
DLL/MS FL TD-Surf csg; BHC Sonic TD-Surf csg

Coring: Sidewalls

DST's: As warranted.

7. ABNORMAL CONDITIONS, BOTTOM HOLE PRESSURE, AND POTENTIAL HAZARDS:

Anticipated BHP:

From: 0	TO: 900'	Anticipated Max. BHP: 375 PSI
From: 900'	TO: 5450'	Anticipated Max. BHP: 2700 PSI

Abnormal Pressures Anticipated: None

Lost Circulation Zones Anticipated: None.

H<sub>2</sub>S Zones Anticipated: None Anticipated

Maximum Bottom Hole Temperature: 110 F

8. ANTICIPATED STARTING DATE:

Plans are to drill this well as soon as possible after receiving approval. It should take approximately 25 days to drill the well with completion taking another 20 days.

**MULTI-POINT SURFACE USE AND OPERATIONS PLAN**  
**YATES PETROLEUM CORPORATION**  
**Getty "PS" 7 Federal #4**  
1930' FSL and 860' FEL  
Section 7-T6S-R26E  
Chaves County, New Mexico

This plan is submitted with Form 3160-3, Application for Permit to Drill, covering the above described well. The purpose of this plan is to describe the location of the proposed well, the proposed construction activities and operations plan, the magnitude of the surface disturbance involved and the procedures to be followed in rehabilitating the surface after completion of the operations, so that a complete appraisal can be made of the environmental effect associated with the operations.

1. EXISTING ROADS:

Exhibit A is a portion of the BLM map showing the well and roads in the vicinity of the proposed location. The proposed wellsite is located approximately 25 miles northeast of Roswell, New Mexico and the access route to the location is indicated in red and green on Exhibit A.

DIRECTIONS:

Go north of Roswell on Highway 285 for approx. 23 miles to Cottonwood Road. Turn east and follow road approx. 14.3 miles to Roosevelt Road. Turn north and go approx. 3.5 miles. The new road will start here and go east through the gravel pit to the northeast corner of pad.

2. PLANNED ACCESS ROAD:

- A. The proposed new access will be approximately 2700' in length from the point of origin to the northeast corner of the drilling pad. The road will lie in a east to west direction.
- B. The new road will be 14 feet in width (driving surface) and will be adequately drained to control runoff and soil erosion.
- C. Existing roads will be maintained in the same or better condition.

3. LOCATION OF EXISTING WELL:

- A. There is drilling activity within a one-mile radius of the wellsite.
- B. Exhibit D shows existing wells within a one-mile radius of the proposed wellsite.

4. LOCATION OF EXISTING AND/OR PROPOSED FACILITIES:

- A. There are production facilities on this lease at the present time.
- B. In the event that the well is productive, the necessary production facilities will be installed on the drilling pad. If the well is productive oil, a gas or diesel self-contained unit will be used to provide the necessary power. No power will be required if the well is productive of gas.

5. LOCATION AND TYPE OF WATER SUPPLY:

- A. It is planned to drill the proposed well with a fresh water system. The water will be obtained from commercial sources and will be hauled to the location by truck over the existing and proposed roads shown in Exhibit A.

6. SOURCE OF CONSTRUCTION MATERIALS:

Dirt contractor will locate nearest pit and obtain any permits and materials needed for construction.

7. METHODS OF HANDLING WASTE DISPOSAL:

- A. Drill cuttings will be disposed of in the reserve pits.
- B. Drilling fluids will be allowed to evaporate in the reserve pits until the pits are dry.
- C. Water produced during operations will be collected in tanks until hauled to an approved disposal system, or separate disposal application will be submitted.
- D. Oil produced during operations will be stored in tanks until sold.
- E. Current laws and regulations pertaining to the disposal of human waste will be complied with.
- F. All trash, junk, and other waste materials will be contained in trash cages or bins to prevent scattering and will be removed and deposited in an approved sanitary land fill. Burial on site is not approved.

8. ANCILLARY FACILITIES: None

9. WELLSITE LAYOUT:

- A. Exhibit C shows the relative location and dimensions of the well pad, the reserve pits, the location of the drilling equipment, rig orientation and access road approach.
- B. The reserve pits will be plastic lined.
- C. A 400' x 400' area has been staked and flagged.

10. PLANS FOR RESTORATION:

- A. After finishing drilling and/or completion operations, all equipment and other material not needed for further operations will be removed. The location will be cleaned of all trash and junk to leave the wellsite in as aesthetically pleasing a condition as possible.
- B. Unguarded pits, if any, containing fluids will be fenced until they have dried and been leveled.
- C. If the proposed well is non-productive, all rehabilitation and/or vegetation requirements of the Bureau of Land Management will be complied with and will be accomplished as expeditiously as possible. All pits will be filled level after they have evaporated and dried.

11. SURFACE OWNERSHIP:

Corn Brothers, Inc.  
Roswell, New Mexico  
An Agreement has been reached with the landowner  
Concerning surface use in drilling this well.

12. OTHER INFORMATION:

- A. Topography: Refer to the existing archaeological report for a description of the topography, flora, fauna, soil characteristics, dwellings, historical and cultural sites.
- B. The primary surface use is for grazing.

13. OPERATOR'S REPRESENTATIVE:

- |                                                                                                                                                                                |                                                                                                                                                                                                 |
|--------------------------------------------------------------------------------------------------------------------------------------------------------------------------------|-------------------------------------------------------------------------------------------------------------------------------------------------------------------------------------------------|
| A. Through A.P.D. Approval:<br>Clifton R. May, Regulatory Agent<br>Yates Petroleum Corporation<br>105 South Fourth Street<br>Artesia, New Mexico 88210<br>Phone (505) 748-1471 | B. Through Drilling, Completions & Prod.<br>Pinson McWhorter, Operations Manager<br>Yates Petroleum Corporation<br>105 South Fourth Street<br>Artesia, New Mexico 88210<br>Phone (505) 748-1471 |
|--------------------------------------------------------------------------------------------------------------------------------------------------------------------------------|-------------------------------------------------------------------------------------------------------------------------------------------------------------------------------------------------|

14. CERTIFICATION:

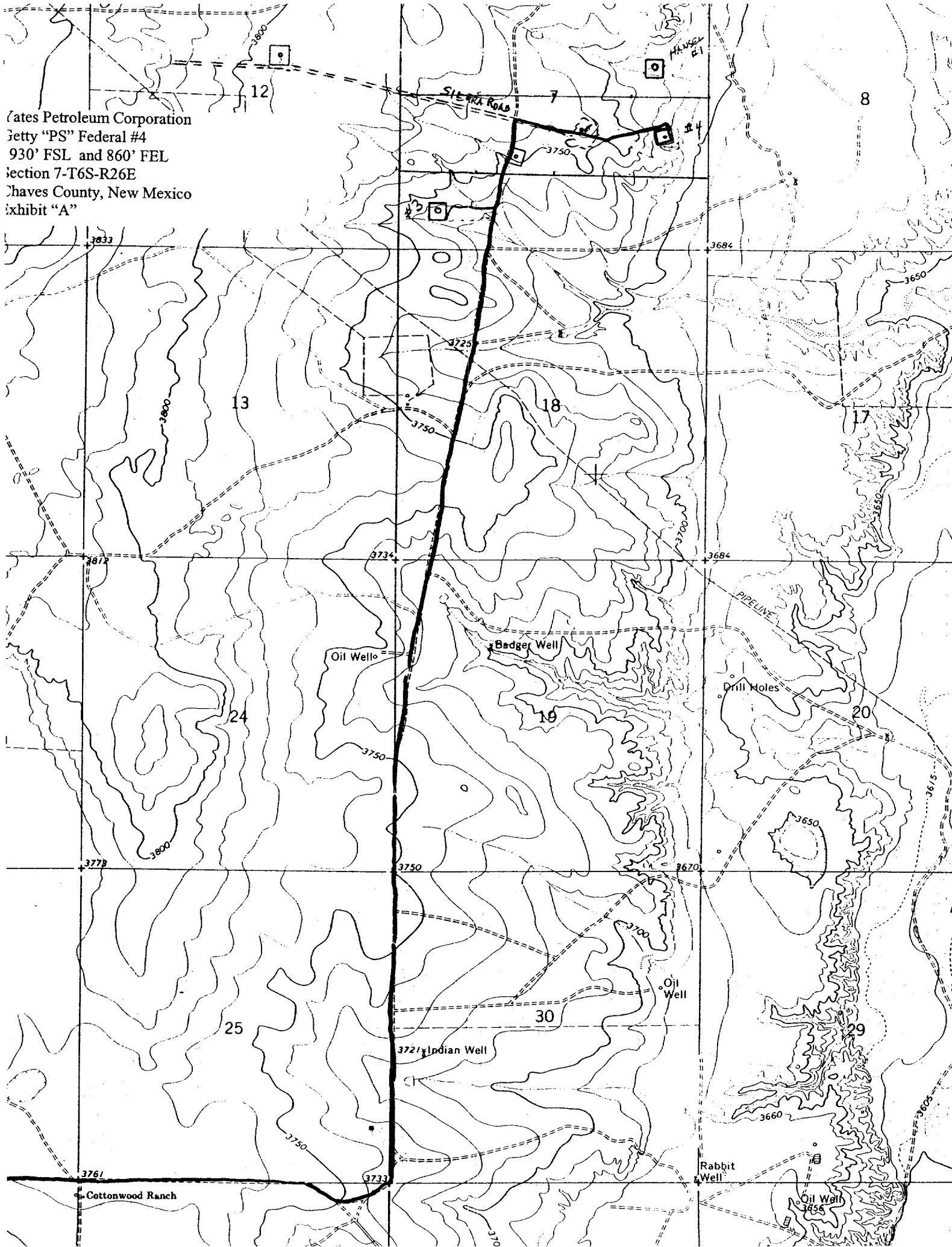
I hereby certify that I, or persons under my direct supervision, have inspected the proposed drill site and access route, that I am familiar with the conditions which presently exist; that the statements made in this plan are to the best of my knowledge, true and correct; and , that the work associated with the operations proposed herein will be performed by Yates Petroleum Corporation and its contractors and subcontractors in conformity with this plan and the terms and conditions under which it is approved. This statement is subject to the provisions of 18 U.S.C. 1001 for the filing of a false statement.

11/05/2001

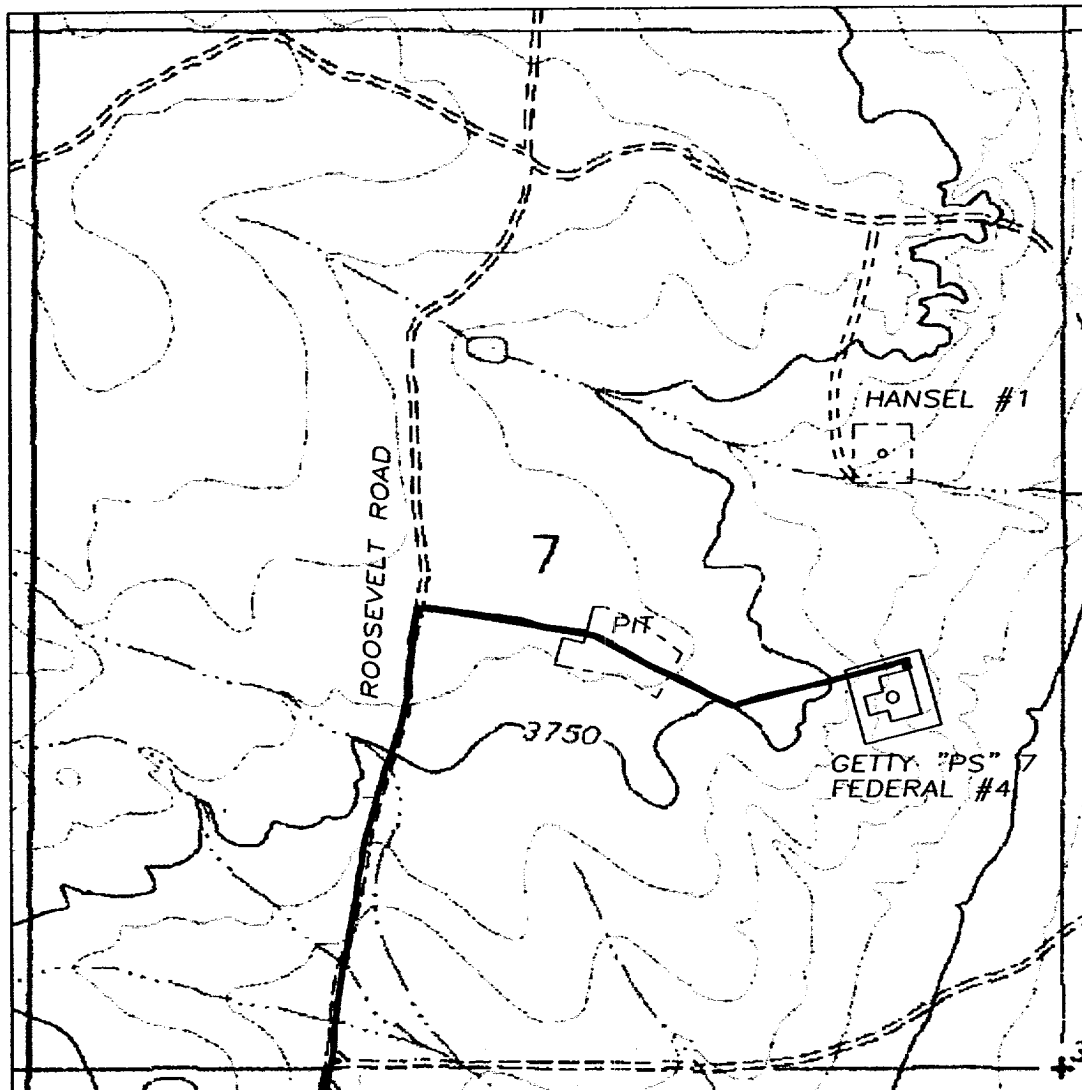
  
Regulatory Agent



Wates Petroleum Corporation  
Jetty "PS" Federal #4  
930' FSL and 860' FEL  
Section 7-T6S-R26E  
Chaves County, New Mexico  
Exhibit "A"



SECTION 7, TOWNSHIP 6 SOUTH, RANGE 26 EAST, NMPM, CHAVES COUNTY, NEW MEXICO.



Yates Petroleum Corporation  
 Getty "PS" Federal #4  
 1930' FSL and 860' FEL  
 Section 7-T6S-R26E  
 Chaves County, New Mexico  
 Exhibit "A-1"

1000' 0 1000' 2000'  
 Scale 1" = 1000'

THE PREPARATION OF THIS MAP AND THE PERFORMANCE OF THE SURVEY UPON WHICH IT IS BASED WERE DONE UNDER MY DIRECTION AND THE PLAN ACCURATELY DEPICTS THE RESULTS OF SAID SURVEY AND MEET THE REQUIREMENTS OF THE STANDARDS FOR LAND SURVEYS IN NEW MEXICO AS ADOPTED BY THE NEW MEXICO STATE BOARD OF REGISTRATION FOR PROFESSIONAL ENGINEERS AND LAND SURVEYORS.

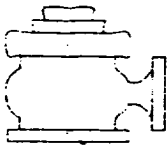
*Herschel L. Jones*  
 3640  
 HERSCHEL L. JONES P.L.S. No. 3640

GENERAL SURVEYING COMPANY P.O. BOX 1928  
 LOVINGTON, NEW MEXICO 88260

YATES PETROLEUM CORP.

LEASE ROAD TO ACCESS THE YATES GETTY "PS"  
 7 FEDERAL #4, LOCATED IN SECTION 7,  
 TOWNSHIP 6 SOUTH, RANGE 26 EAST, NMPM,  
 CHAVES COUNTY, NEW MEXICO.

Survey Date: 10/30/2001	Sheet 1 of 1 Sheets
Drawn By: Ed Blevins	W.O. Number
Date: 10/31/01	Scale 1" = 1000' GETTY 7M



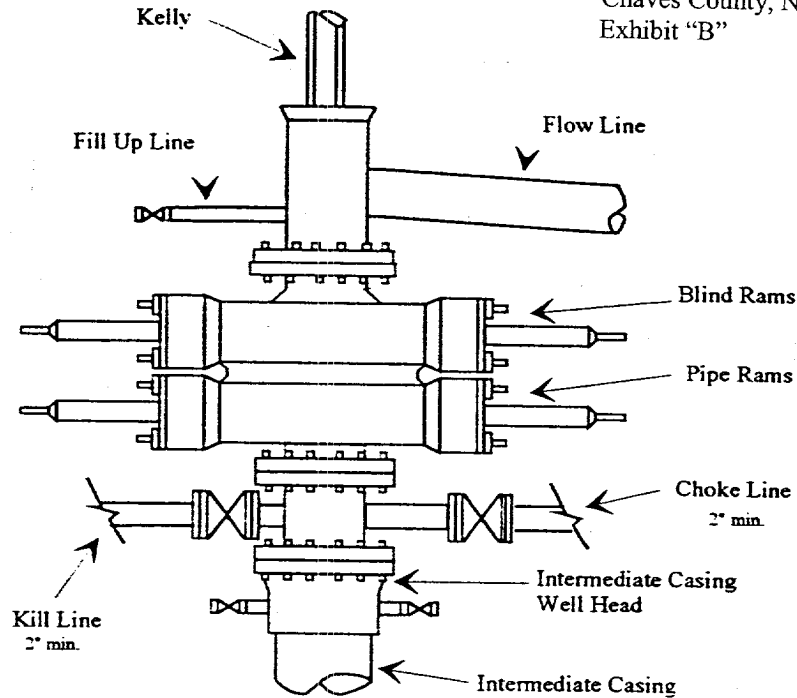
# Yates Petroleum Corporation

BOP-2

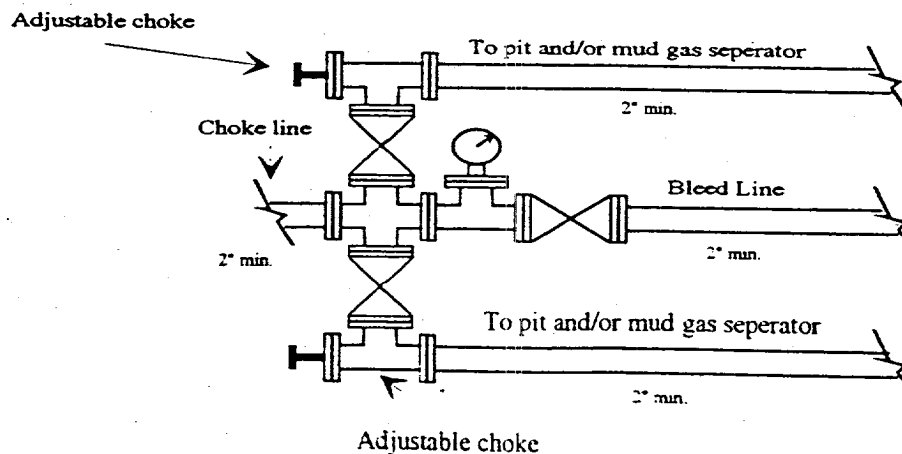
## Typical 2,000 psi Pressure System Schematic

### Double Ram Preventer Stack

Yates Petroleum Corporation  
Getty "PS" Federal #4  
1930' FSL and 860' FEL  
Section 7-T6S-R26E  
Chaves County, New Mexico  
Exhibit "B"



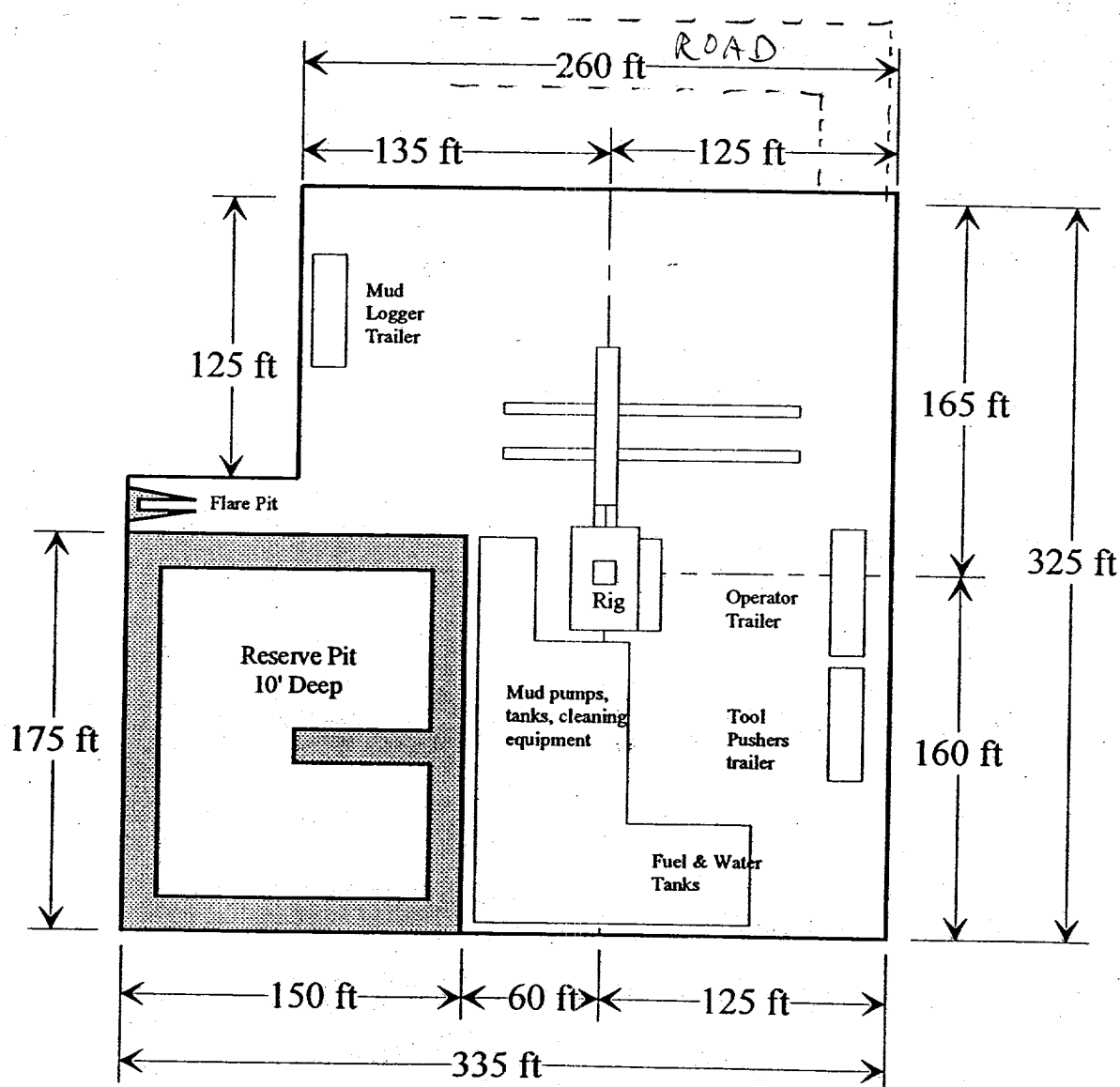
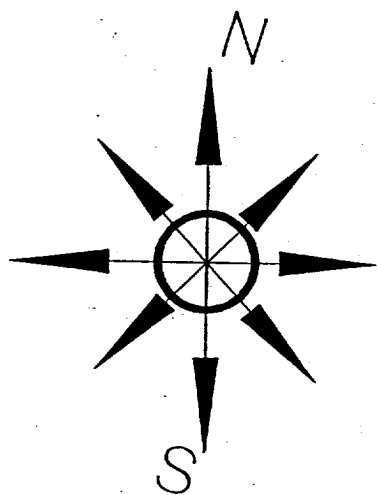
Typical 2,000 psi choke manifold assembly with at least these minimum features



# Yates Petroleum Corporation

Location Layout for Permian Basin  
Up to 12,000'

Yates Petroleum Corporation  
 Jetty "PS" Federal #4  
 930' FSL and 860' FEL  
 Section 7-T6S-R26E  
 Chaves County, New Mexico  
 Exhibit "C"

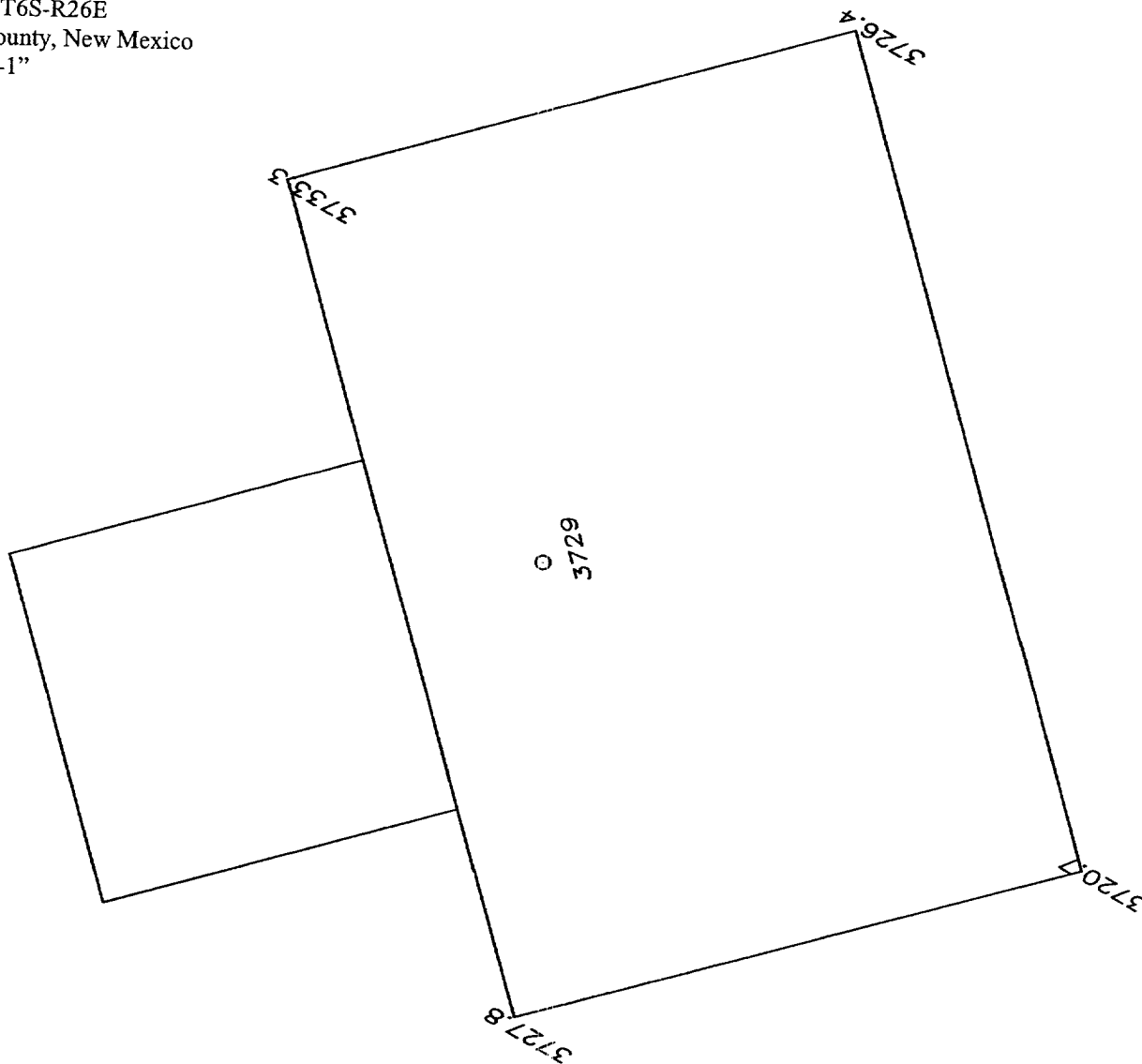


Distance from Well  
 Head to Reserve Pit  
 will vary between rigs

The above dimension  
 should be a maximum

YATES PETROLEUM CORPORATION GETTY "PS" 7 FEDERAL #4, 1930/S&860/E,  
SECTION 7, TOWNSHIP 6 SOUTH, RANGE 26 EAST, NMPM, CHAVES COUNTY, NEW MEXICO.

Yates Petroleum Corporation  
Getty "PS" Federal #4  
1930' FSL and 860' FEL  
Section 7-T6S-R26E  
Chaves County, New Mexico  
Exhibit "c-1"



50' 0 50' 100'  
Scale 1" = 50'

THE PREPARATION OF THIS PLAT AND THE PERFORMANCE OF THE SURVEY UPON WHICH IT IS BASED WERE DONE UNDER MY DIRECTION AND THE PLAT ACCURATELY DEPICTS THE RESULTS OF SAID SURVEY AND MEET THE REQUIREMENTS OF THE STANDARDS FOR LAND SURVEYS IN NEW MEXICO AS ADOPTED BY THE NEW MEXICO STATE BOARD OF REGISTRATION FOR PROFESSIONAL ENGINEERS AND LAND SURVEYORS.

3640  
HERSCHEL L. JONES, P.E. No. 3640

GENERAL SURVEYING COMPANY P.O. BOX 1928  
LOVINGTON, NEW MEXICO 88260

YATES PETROLEUM CORP.

WELL PAD PLAN VIEW ON THE YATES GETTY  
"PS" 7 FEDERAL #4 LOCATED 1930/S AND  
860/E OF SECTION 7, TOWNSHIP 6 SOUTH,  
RANGE 26 EAST, NMPM, CHAVES COUNTY, NEW  
MEXICO.

Survey Date: 10/30/2001	Sheet 1 of 1 Sheets
Drawn By: Ed Blevins	W.O. Number
Date: 11/03/01	Scale 1" = 50' GETTY 4

