

UNITED STATES  
DEPARTMENT OF THE INTERIOR  
BUREAU OF LAND MANAGEMENT

APPLICATION FOR PERMIT TO DRILL OR REENTER

1a. Type of Work: ☒ DRILL ☐ REENTER

b. Type of Well: ☐ Oil Well ☒ Gas Well ☐ Other ☐ Single Zone ☒ Multiple Zone

2. Name of Operator

Yates Petroleum Corporation Unders. Foor Ranch; Pm - Permian

3A. Address 105 South Fourth Street  
Artesia, New Mexico 88210

3b. Phone No. (include area code)  
(505) 748-1471

4. Location of Well (Report location clearly and in accordance with any State requirements. \*)

At surface 660' FSL and 700' FEL

At proposed prod. Zone same as above Unit P

14. Distance in miles and direction from nearest town or post office\*

Approximately twenty (20) miles Northeast of Roswell, NM

15. Distance from proposed\*  
location to nearest  
property or lease line, ft.  
(Also to nearest drig. unit line, if any) 660'

16. No. of Acres in lease  
2120

17. Spacing Unit dedicated to this well  
320 acres

18. Distance from proposed location\*  
to nearest well, drilling, completed,  
applied for, on this lease, ft.

19. Proposed Depth  
6710'

20. BLM/BIA Bond No. on file  
NM-2811

21. Elevations (Show whether DF, KDB, RT, GL, etc.)  
3943' GL

22. Approximate date work will start\*  
ASAP

23. Estimated duration  
30 Days

24. Attachments ROSWELL OILFIELD AND WATER BASIN

The following, completed in accordance with the requirements of Onshore Oil and Gas Order No. 1, shall be attached to this form:

1. Well plat certified by a registered surveyor.
2. A Drilling Plan.
3. A Surface Use Plan (if the location is on National Forest System Lands, the SUPO shall be filed with the appropriate Forest Service Office.

4. Bond to cover the operations unless covered by an existing bond on file (see Item 20 above).
5. Operator certification.
6. Such other site specific information and/or plans as may be required by the authorized office.

25. Signature

Name (Printed/Typed)

Date

Title:

Pat Perez

12/11/01

Regulatory Agent

Approved by (Signature)

Name (Printed/Typed)

Date

/S/LARRY D. BRAY

APR 11 2002

Title

Assistant Field Manager,  
Lands And Minerals

Office

ROSWELL FIELD OFFICE APPROVED FOR 1 YEAR

Application approval does not warrant or certify that the applicant holds legal or equitable title to those rights in the subject lease which would entitle the applicant to conduct operations thereon.

Conditions of approval, if any, are attached.

Title 18 U.S.C. Section 1001 and Title 43 U.S.C. Section 1212, make it a crime for any person knowingly and willfully to make to any department or agency of the United States any false, fictitious or fraudulent statements or representations as to any matter within its jurisdiction.

\*(Instructions on reverse)

DECLARED WATER BASIN

CEMENT BEHIND THE 85"  
CASING MUST BE CIRCULATED

APPROVAL SUBJECT TO  
GENERAL REQUIREMENTS AND  
SPECIAL STIPULATIONS ATTACHED

RECEIVED  
2001 DEC 11 PM 1:27  
BUREAU OF  
FOREIGN OFFICE

RECEIVED  
2001 DEC 11 PM 1:27  
BUREAU OF  
FOREIGN OFFICE



Certificate No. Herschel L. Jones RLS 3640  
HUCKABAY 6  
GENERAL SURVEYING COMPANY

**YATES PETROLEUM CORPORATION**  
**Huckabay "TJ" Federal #6**  
660' FSL and 700' FEL  
Section 23-T8S-R26E  
Chaves County, New Mexico

1. The estimated tops of geologic markers are as follows:

San Andres	1130'	Cisco	5825'
Glorieta	2210'	Penn-Clastics	5890'
Yeso	2335'	Mississippian	6120'
Tubb	3765'	Siluro-Devonian	6300'
Abo	4505'	Basement	6560'
Wolfcamp	5195'	TD	6710'

2. The estimated depths at which anticipated water, oil or gas formations are expected to be encountered:

Water: 250'-350'  
Oil or Gas: All potential formations.

3. Pressure Control Equipment: BOPE will be installed on the 8 5/8" casing and rated for 2000# BOP systems will be consistent with API RP 53. Pressure tests will be conducted before drilling out from under all casing strings, which are set and cemented in place. Blowout Preventor controls will be installed prior to drilling the surface plug and will remain in use until the well is completed or abandoned. Preventors will be inspected and operated at least daily to ensure good mechanical working order, and this inspection recorded on the daily drilling report. See Exhibit B.

Auxiliary Equipment:

- A. Auxiliary Equipment: Kelly cock, pit level indicators, flow sensor equipment and a sub with full opening valve to fit the drill pipe and collars will be available on the rig floor in the open position at all times for use when kelly is not in use.

4. THE PROPOSED CASING AND CEMENTING PROGRAM:

- A. Casing Program: (All New)

<u>Hole Size</u>	<u>Casing Size</u>	<u>Wt./Ft</u>	<u>Grade</u>	<u>Coupling</u>	<u>Interval</u>	<u>Length</u>
12 1/4"	8 5/8"	24#	J-55	ST&C	0-1000'	1000'
7 7/8"	5 1/2"	15.5#	J-55	ST&C	0-6710'	6710'

1. Minimum Casing Design Factors: Collapse 1.125, Burst 1.0, and Tensile Strength 1.8
2. A 2,000 psi BOP will be nipped up on the 8 5/8" casing and tested to 1000 psi. YPC requests a variance be granted in requiring the casing and BOPE to be tested to 2000 psi to testing the casing and BOPE to 1000 psi. The rig pumps will be used to test the casing and BOPE. Rig pumps used in this area cannot safely test above 1000 psi. We would have to go to the greater expense of hiring an independent service company to do the testing. Also, the bottom hole pressure in this field is proven to be near 1000 psi. A shut in surface pressure would be less than 1000 psi. We feel that a 1100 psi test will demonstrate that the BOPE is functioning properly, and in the unlikely event of a gas influx that the BOPE would be sufficient to control the well.

## Huckabay "TJ" Federal #6

### Page 2

#### B. CEMENTING PROGRAM:

Surface Casing: Cement with 250 sx Lite "C" (YLD 2.0 WT 12.5). Tail in with 200 sx "C" + 2% CaCl<sub>2</sub> (YLD 1.33 WT 15.6).

Production Casing: 600 sx PVL (YLD 1.34 WT 13). TOC 4000'.

#### 5. MUD PROGRAM AND AUXILIARY EQUIPMENT:

<u>Interval</u>	<u>Type</u>	<u>Weight</u>	<u>Viscosity</u>	<u>Fluid Loss</u>
0-1000'	FW GEL/Paper/LCM	8.6-9.6	32-36	N/C
1000'-4475'	Brine	10.0-10.2	28	N/C
4475'-6710'	Starch/Salt Gel	9.3-10.2	32-40	<6CC

Sufficient mud material(s) to maintain mud properties, control lost circulation and contain a blow out will be available at the well site during drilling operations. Mud will be checked hourly by rig personnel.

#### 6. EVALUATION PROGRAM:

Samples: 10' samples out from under surface casing.

Logging: Platform Express, CNL/LDT W/NGT to TD to surface casing, w/ GR/CNL TD to surface, DLL/MSFL TD to surface casing, BHC Sonic TD to surface casing; FMI TD - top of Wolfcamp.

Coring: Sidewall

DST's: None

#### 7. ABNORMAL CONDITIONS, BOTTOM HOLE PRESSURE, AND POTENTIAL HAZARDS:

Anticipated BHP:

From: 0	TO: 1000'	Anticipated Max. BHP: 400 PSI
From: 1000'	TO: 6710'	Anticipated Max. BHP: 2800 PSI

Abnormal Pressures Anticipated: None

Lost Circulation Zones Anticipated: None.

H<sub>2</sub>S Zones Anticipated: None Anticipated

Maximum Bottom Hole Temperature: 110 F

#### 8. ANTICIPATED STARTING DATE:

Plans are to drill this well as soon as possible after receiving approval. It should take approximately 15 days to drill the well with completion taking another 15 days.

**MULTI-POINT SURFACE USE AND OPERATIONS PLAN**  
**YATES PETROLEUM CORPORATION**  
**Huckabay "TJ" Federal #6**  
**660' FSL and 700' FEL**  
Section 23-T8S-R26E  
Chaves County, New Mexico

This plan is submitted with Form 3160-3, Application for Permit to Drill, covering the above described well. The purpose of this plan is to describe the location of the proposed well, the proposed construction activities and operations plan, the magnitude of the surface disturbance involved and the procedures to be followed in rehabilitating the surface after completion of the operations, so that a complete appraisal can be made of the environmental effect associated with the operations.

**1. EXISTING ROADS:**

Exhibit A is a portion of the BLM map showing the well and roads in the vicinity of the proposed location. The proposed well site is located approximately 20 miles northeast of Roswell, New Mexico and the access route to the location is indicated in red and green on Exhibit A.

**DIRECTIONS:**

Go northeast out of Roswell, NM on Hwy 70 to Ponderosa Road. Turn right, southeast, on Ponderosa Road and go approximately 1.1 miles to lease road. Turn right, southwest, and going approximately 2.2 miles to the El Paso Pipeline Road. Follow road northwest (road will intersect in front of Jasper #2 location) approx. 0.8 of a mile where the lease road is staked on the left south side and will continue southeast approx. 1200' to the southeast corner of the location.

**2. PLANNED ACCESS ROAD:**

- A. The proposed new access will be approximately 1200' in length from the point of origin to the southeast corner of the drilling pad.
- B. The new road will be 14 feet in width (driving surface) and will be adequately drained to control runoff and soil erosion.
- C. The new road will be bladed with drainage on both sides. No traffic turnout will be built.
- D. The route of the road is visible.
- E. Existing roads will be maintained in the same or better condition.

**3. LOCATION OF EXISTING WELL:**

- A. There is drilling activity within a one-mile radius of the well site.
- B. Exhibit D shows existing wells within a one-mile radius of the proposed well site.

**4. LOCATION OF EXISTING AND/OR PROPOSED FACILITIES:**

- A. There are production facilities on this lease at the present time.
- B. In the event that the well is productive, the necessary production facilities will be installed on the drilling pad. If the well is productive oil, a gas or diesel self-contained unit will be used to provide the necessary power. No power will be required if the well is productive of gas.

5. LOCATION AND TYPE OF WATER SUPPLY:

- A. It is planned to drill the proposed well with a fresh water system. The water will be obtained from commercial sources, possibly in Roswell, and will be hauled to the location by truck over the existing and proposed roads shown in Exhibit A.

6. SOURCE OF CONSTRUCTION MATERIALS:

The dirt contractor will be responsible for finding a source of material for construction of road and pad and will obtain any permits which may be required.

7. METHODS OF HANDLING WASTE DISPOSAL:

- A. Drill cuttings will be disposed of in the reserve pits.
- B. Drilling fluids will be allowed to evaporate in the reserve pits until the pits are dry.
- C. Water produced during operations will be collected in tanks until hauled to an approved disposal system, or separate disposal application will be submitted.
- D. Oil produced during operations will be stored in tanks until sold.
- E. Current laws and regulations pertaining to the disposal of human waste will be complied with.
- F. All trash, junk, and other waste materials will be contained in trash cages or bins to prevent scattering and will be removed and deposited in an approved sanitary landfill. Burial on site is not approved.

8. ANCILLARY FACILITIES: NONE

9. WELLSITE LAYOUT:

- A. Exhibit C shows the relative location and dimensions of the well pad, the reserve pits, the location of the drilling equipment, rig orientation and access road approach. Note: Pits to East Southeast.
- B. The reserve pits will be plastic lined.
- C. A 400' x 400' area has been staked and flagged.

10. PLANS FOR RESTORATION:

- A. After finishing drilling and/or completion operations, all equipment and other material not needed for further operations will be removed. The location will be cleaned of all trash and junk to leave the well site in as aesthetically pleasing a condition as possible.
- B. Unguarded pits, if any, containing fluids will be fenced until they have dried and been leveled.
- C. If the proposed well is non-productive, all rehabilitation and/or vegetation requirements of the Bureau of Land Management will be complied with and will be accomplished as expeditiously as possible. All pits will be filled level after they have evaporated and dried.



11. SURFACE OWNERSHIP: Wes Runyan – Roswell, New Mexico.
12. OTHER INFORMATION:
  - A. Topography: Refer to the existing archaeological report for a description of the topography, flora, fauna, soil characteristics, dwellings, and historical and cultural sites.
  - B. The primary surface use is for grazing.
13. OPERATOR'S REPRESENTATIVE:
  - A. Through A.P.D. Approval:  
Patricia Perez, Regulatory Agent  
Yates Petroleum Corporation  
105 South Fourth Street  
Artesia, New Mexico 88210  
Phone (505) 748-1471
  - B. Through Drilling, Completions & Prod.  
Pinson McWhorter, Operations Manager  
Yates Petroleum Corporation  
105 South Fourth Street  
Artesia, New Mexico 88210  
Phone (505) 748-1471
14. CERTIFICATION:

I hereby certify that I, or persons under my direct supervision, have inspected the proposed drill site and access route, that I am familiar with the conditions which presently exist; that the statements made in this plan are to the best of my knowledge, true and correct; and, that the work associated with the operations proposed herein will be performed by Yates Petroleum Corporation and its contractors and subcontractors in conformity with this plan and the terms and conditions under which it is approved. This statement is subject to the provisions of 18 U.S.C. 1001 for the filing of a false statement.

12/05/01

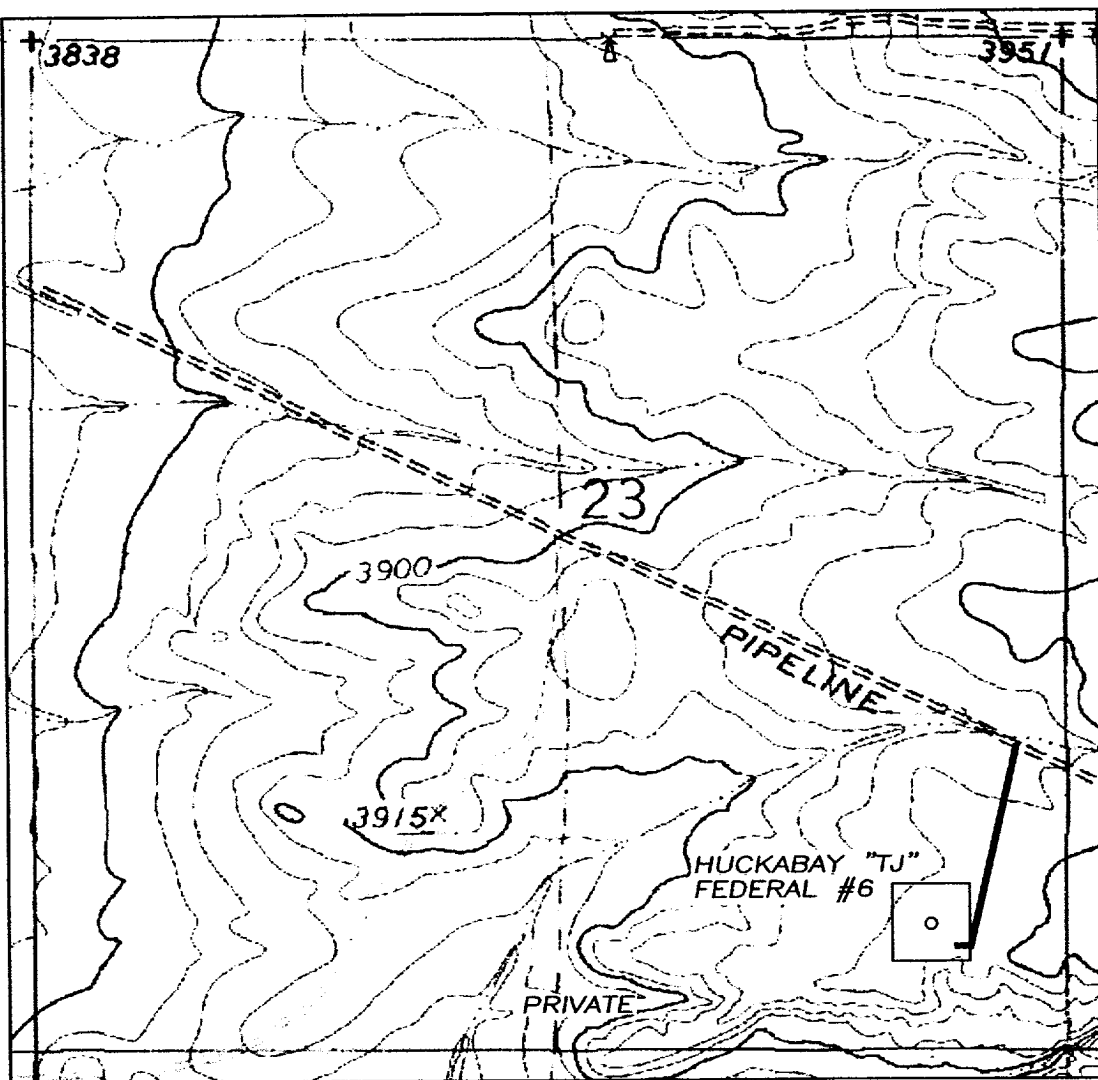
  
Regulatory Agent

Chaves Petroleum Corporation  
Hickaby "TJ" Federal #6  
660' FSL & 700' FEL  
Section 23-T8S-R26E  
Chaves County, New Mexico  
Exhibit "A"

#### Directions to Location

GO NORTHEAST OUT OF ROSWELL, NM ON HWY 70 TO PONDEROSA ROAD. TURN RIGHT, SOUTHEAST, ON PONDEROSA ROAD AND GO APPROXIMATELY 1.1 MILES TO LEASE ROAD. TURN RIGHT, SOUTHWEST, AND GOING APPROXIMATELY 2.2 MILES TO THE EL PASO PIPELINE ROAD. TURN RIGHT, NORTHWEST, APPROXIMATELY 0.8 OF A MILE. THE NEW ROAD WILL START HERE AND GO LEFT, SOUTHWEST, FOR APPROXIMATELY 1200' TO THE SOUTHEAST CORNER OF THE WELL PAD.

SECTION 23, TOWNSHIP 8 SOUTH, RANGE 26 EAST, NMPM, CHAVES COUNTY, NEW MEXICO.



Yates Petroleum Corporation  
Huckabay "TJ" Federal #6  
660' FSL & 700' FEL  
Section 23-T8S-R26E  
Chaves County, New Mexico  
Exhibit "A-1"

1000' 0 1000' 2000'  
Scale 1" = 1000'

THE PREPARATION OF THIS PLAT AND THE PERFORMANCE OF THE SURVEY UPON WHICH IT IS BASED WERE DONE UNDER MY DIRECTION AND THE PLAT ACCURATELY DEPICTS THE RESULTS OF SAID SURVEY AND MEET THE REQUIREMENTS OF THE STANDARDS FOR LAND SURVEYS IN NEW MEXICO AS ADOPTED BY THE NEW MEXICO STATE BOARD OF REGISTRATION FOR PROFESSIONAL ENGINEERS AND LAND SURVEYORS.

3640

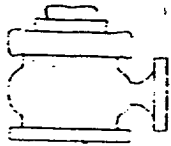
HERSCHEL L. JONES S.L.S. No. 3640

YATES PETROLEUM CORP.

LEASE ROAD TO ACCESS THE YATES HUCKABAY "TJ" FEDERAL #6 LOCATED IN SECTION 23, TOWNSHIP 8 SOUTH, RANGE 26 EAST, NMPM, CHAVES COUNTY, NEW MEXICO.

Survey Date: 10/01/2001	Sheet 1 of 1 Sheets
Drawn By: Ed Blevins	W.O. Number
Date: 10/01/01	Scale 1" = 1000' HUCKABAY 6

GENERAL SURVEYING COMPANY P.O. BOX 1928  
LOVINGTON, NEW MEXICO 88260



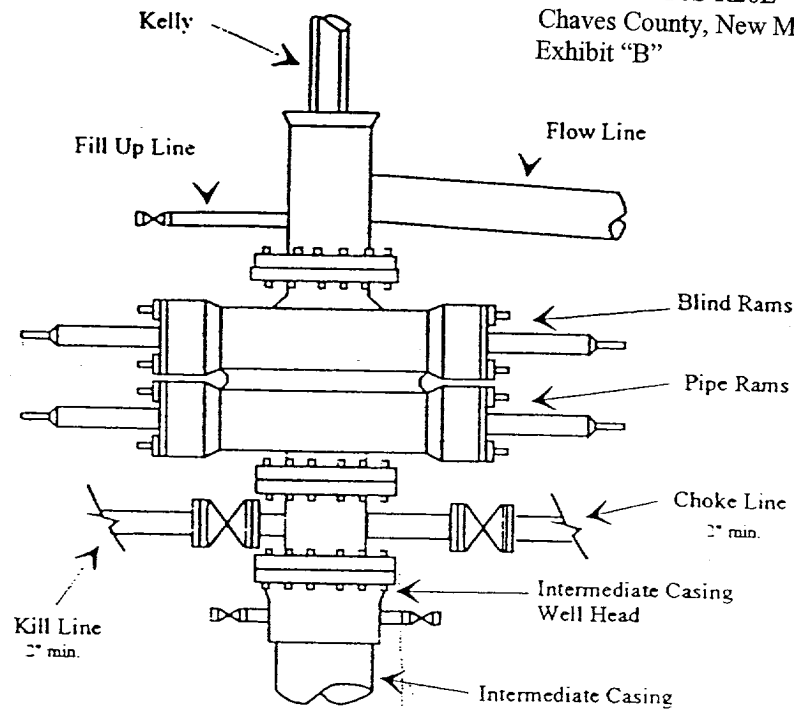
# Yates Petroleum Corporation

BOP-2

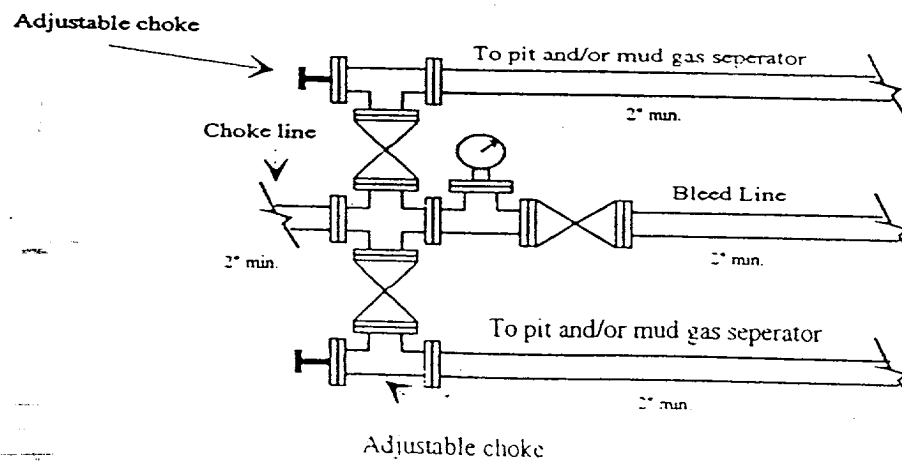
Typical 2,000 psi Pressure System  
Schematic

Double Ram Preventer Stack

Yates Petroleum Corporation  
Huckabay "TJ" Federal #6  
660' FSL & 700' FEL  
Section 23-T8S-R26E  
Chaves County, New Mexico  
Exhibit "B"

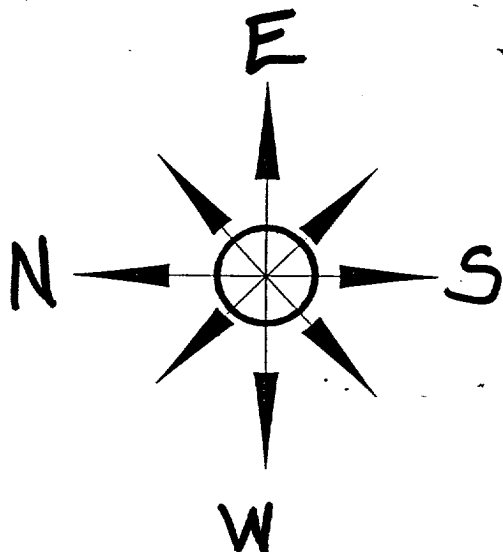


Typical 2,000 psi choke manifold assembly with at least these minimum features

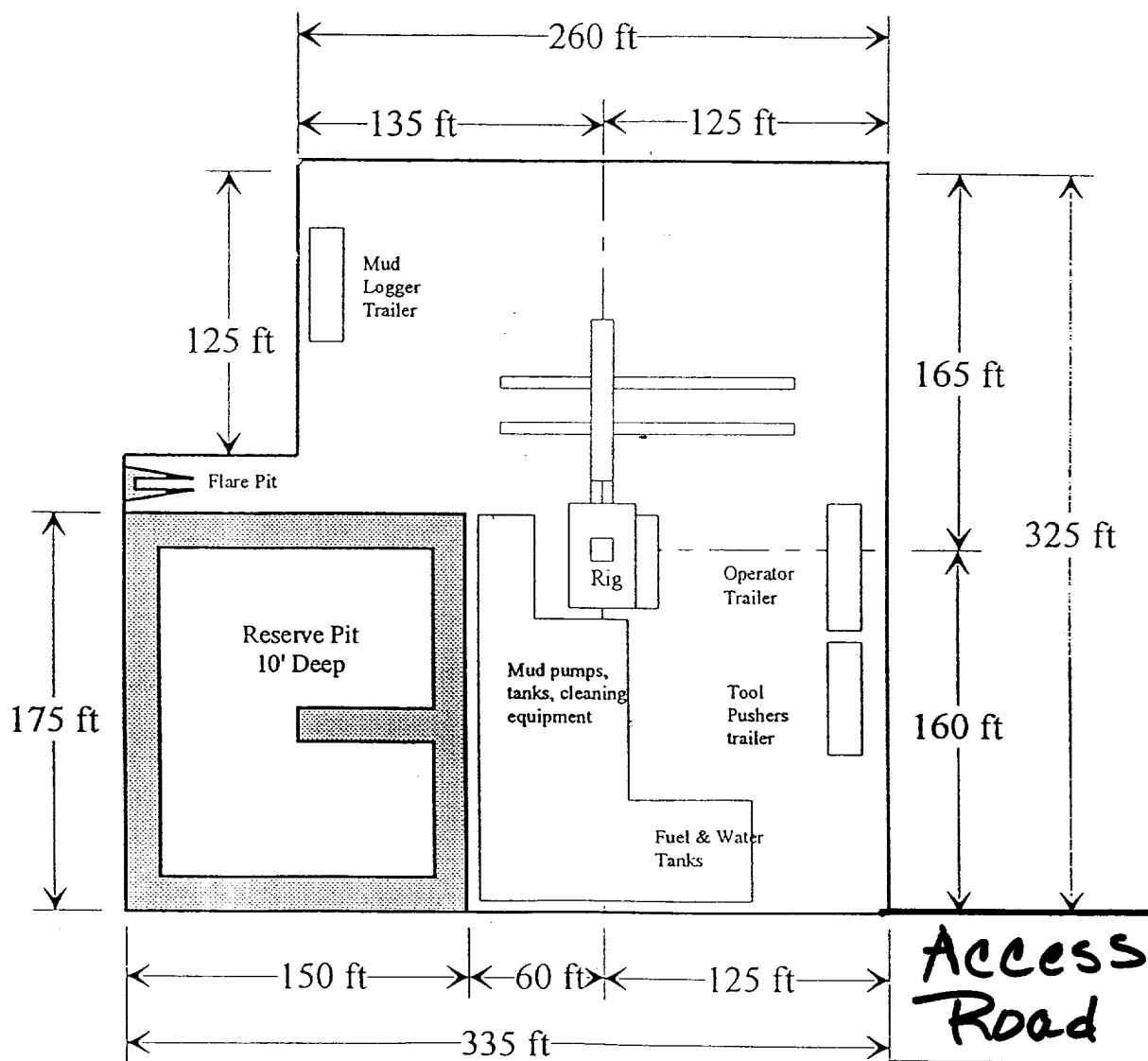


# Yates Petroleum Corporation

Location Layout for Permian Basin  
Up to 12,000'



Yates Petroleum Corporation  
Huckabay "TJ" Federal #6  
660' FSL & 700' FEL  
Section 23-T8S-R26E  
Chaves County, New Mexico  
Exhibit "C"



Distance from Well  
Head to Reserve Pit  
will vary between rigs

The above dimension  
should be a maximum

Yates Petroleum Corporation  
Huckabay "TJ" Federal #6  
660' FSL & 700' FEL  
Section 23-T8S-R26E  
Chaves County, New Mexico  
Exhibit "D"

