

District I

1625 N. French Dr., Hobbs, NM 88240

District II

1301 W. Grand Avenue, Artesia, NM 88210

District III

1000 Rio Brazos Road, Aztec, NM 87410

District IV

1220 S. Francis Dr., Santa Fe, NM 87505

State of New Mexico

Energy Minerals and Natural Resources

Oil Conservation Division

1220 S. St. Francis Dr.

Santa Fe, NM 87505

Form C-101

Revised March 17, 1999

Submit to appropriate District Office

State Lease - 6 Copies

Fee Lease - 5 Copies

☐ AMENDED REPORT

APPLICATION FOR PERMIT TO DRILL, RE-ENTER, DEEPEN, PLUGBACK, OR ADD A ZONE

Operator Name and Address MARALO, LLC		OGRID Number 014007
Property Code 30049		API Number 30 - 005 - 63494
Property Name MOON		Well No. 1

7 Surface Location

UL or lot no.	Section	Township	Range	Lot Idn	Feet from the	North/South line	Feet from the	East/West line	County
G	35	8-S	29-E		1980	NORTH	1980	EAST	CHAVES

8 Proposed Bottom Hole Location If Different From Surface

UL or lot no.	Section	Township	Range	Lot Idn	Feet from the	North/South line	Feet from the	East/West line	County
Proposed Pool 1 WILDCAT ; MORROW					Proposed Pool 2				

Work Type Code N	Well Type Code G	Cable/Rotary R	Lease Type Code P	Ground Level Elevation 4030'
Multiple N	Proposed Depth 8700'	Formation ATOKA/MORROW	Contractor UNKNOWN	Spud Date 09/01/02

21 Proposed Casing and Cement Program

Hole Size	Casing Size	Casing weight/foot	Setting Depth	Sacks of Cement	Estimated TOC
17-1/2"	13-3/8"	54.5#	300'	350 SXS "C"	SURF.
11"	8-5/8"	32#	2400'	650 SXS "C"	SURF.
7-7/8"	5-1/2"	17#	8700'	1500 SXS "C"	CIRC.

1. DRILL 17-1/2" HOLE TO 300'. RUN & SET 300' 13-3/8" 54.5# SURFACE CASING. CEMENT WITH 350 SXS "C". CIRCULATE CEMENT TO SURFACE. WOC 4 HOURS BEFORE CUTTING OFF 13-3/8" CSG & WOC 4 HOURS. TEST 13-3/8" CSG & WELLHEAD TO 500# BEFORE DRILLING OUT BOTTOM OF 13-3/8" CSG.
2. DRILL 11" HOLE TO 2400'. RUN & SET 8-5/8" 32# CSG. CEMENT WITH 450 SXS "C", TAILED WITH 200 SXS "C". CIRCULATE CEMENT TO SURFACE. SET 8-5/8" CSG SLIPS. CUT OFF 8-5/8" CSG. NU BOP. TEST BOP TO 1000#. WOC 12 HOURS BEFORE DRILLING OUT CEMENT.
3. DRILL 7-7/8" HOLE TO 8700'. POSSIBLE 1 DST. CIRCULATE HOLE CLEAN, LOG AND EVALUATE. RUN 5-1/2" CSG. CEMENT TO COVER ALL POSSIBLE PAY ZONES. CLEAN PITS, RELEASE DRILLING RIG, CLEAN LOCATION. SEE ATTACHED BOP SKETCH.

I hereby certify that the information given above is true and complete to the best of my knowledge and belief.

Signature:

Dorothea Logan

Printed name: DOROTHEA LOGAN

Title: REGULATORY ANALYST

Date: JULY 12, 2002

Phone: 915-684-7441

OIL CONSERVATION DIVISION

Approved by:

ORIGINAL SIGNED BY TIM W. GUM
DISTRICT II SUPERVISOR

Title:

Approval Date:

JUL 16 2002

Expiration Date:

JUL 16 2003

Conditions of Approval:

* Follow Rule 107.6.2

Attached ☐

DISTRICT I

P.O. Box 1980, Hobbs, NM 88241-1980

DISTRICT II

P.O. Drawer DD, Artesia, NM 88211-0719

DISTRICT III

1000 Rio Brazos Rd., Artesia, NM 87410

DISTRICT IV

P.O. BOX 2088, SANTA FE, N.M. 87504-2088

State of New Mexico

Energy, Minerals and Natural Resources Department

OIL CONSERVATION DIVISION

P.O. Box 2088

Santa Fe, New Mexico 87504-2088

Form C-102

Revised February 10, 1994

Submit to Appropriate District Office

State Lease - 4 Copies

Fee Lease - 3 Copies

WELL LOCATION AND ACREAGE DEDICATION PLAT

☐ AMENDED REPORT

API Number		Pool Code	Pool Name WILDCAT
Property Code	Property Name MOON		Well Number 1
OGRD No. 014007	Operator Name MARALO LLC.		Elevation 4030'

Surface Location

UL or lot No.	Section	Township	Range	Lot Idn	Feet from the	North/South line	Feet from the	East/West line	County
G	35	8-S	29-E		1980	NORTH	1980	EAST	CHAVES

Bottom Hole Location If Different From Surface

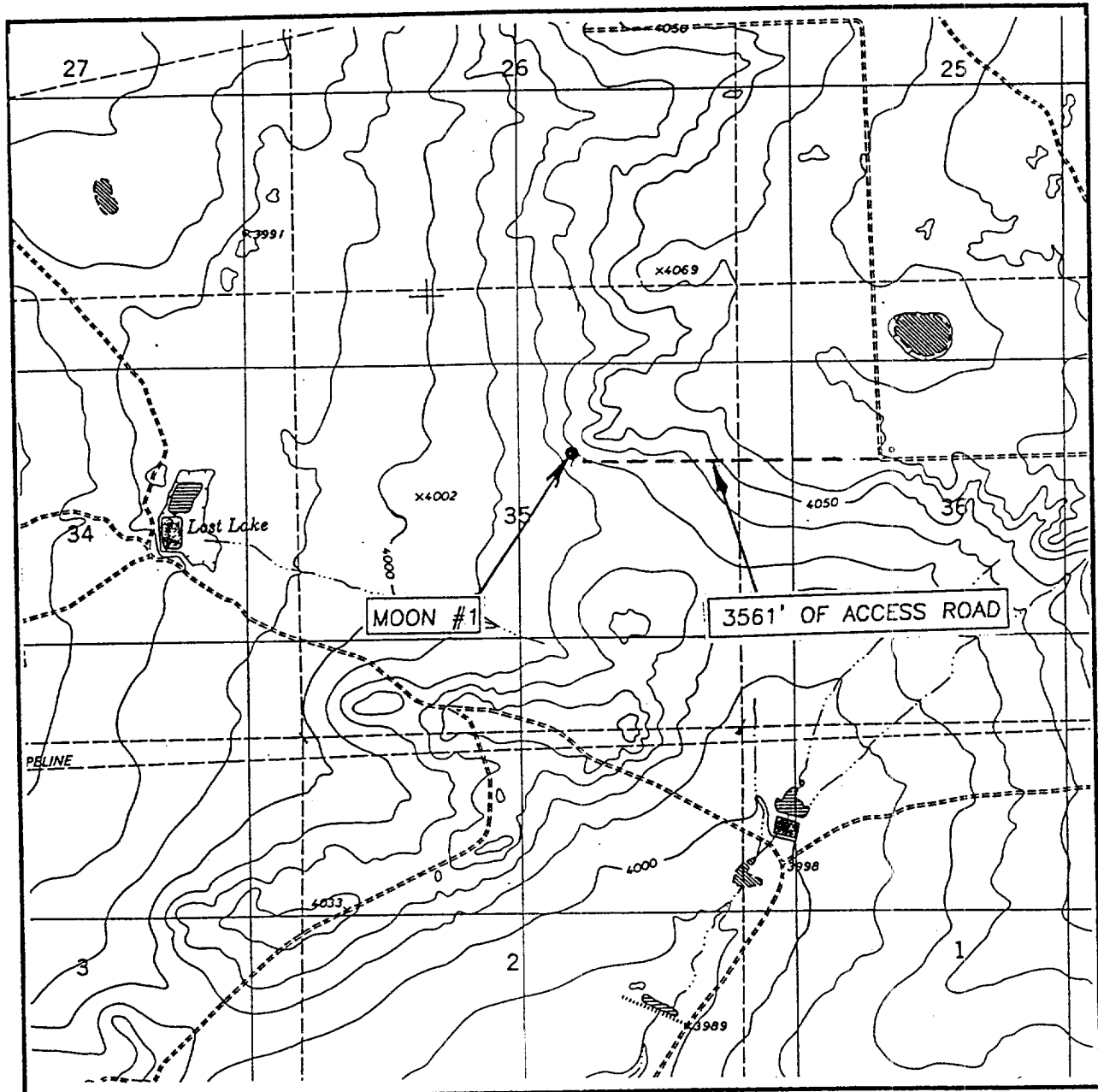
UL or lot No.	Section	Township	Range	Lot Idn	Feet from the	North/South line	Feet from the	East/West line	County

Dedicated Acres 320	Joint or Infill	Consolidation Code	Order No.
-------------------------------	-----------------	--------------------	-----------

NO ALLOWABLE WILL BE ASSIGNED TO THIS COMPLETION UNTIL ALL INTERESTS HAVE BEEN CONSOLIDATED
OR A NON-STANDARD UNIT HAS BEEN APPROVED BY THE DIVISION

<p>GEODETIC COORDINATES NAD 27 NME Y = 938132.9 X = 615930.5 LAT. 33°34'42.26"N LONG. 103°57'11.56"W</p>	<p>1980'</p>		<p>1980'</p>	
	<p>OPERATOR CERTIFICATION</p> <p>I hereby certify the the information contained herein is true and complete to the best of my knowledge and belief.</p> <p><i>Dorothea Logan</i> Signature</p> <p>DOROTHEA LOGAN Printed Name</p> <p>REGULATORY ANALYST Title</p> <p>JULY 12, 2002 Date</p>			
	<p>SURVEYOR CERTIFICATION</p> <p>I hereby certify that the well location shown on this plat was plotted from field notes of actual surveys made by me or under my supervision, and that the same is true and correct to the best of my belief.</p> <p>JULY 03, 2002</p> <p>Date Surveyed</p> <p>Signature & Seal of Professional Surveyor</p> <p><i>Ronald J. Edson</i> Professional Surveyor</p> <p>7/09/02 Date</p> <p>02.11.048 Professional Surveyor</p>			
	<p>Certificate No. RONALD J. EDSON 3239 GARY EDSON 12641</p>			

LOCATION VERIFICATION MAP



SCALE: 1" = 2000'

CONTOUR INTERVAL: 10'
PRESLER LAKE, N.M.

SEC. 35 TWP. 8-S RGE. 29-E

SURVEY N.M.P.M.

COUNTY CHAVES

DESCRIPTION 1980' FNL & 1980' FEL
ELEVATION 4030'

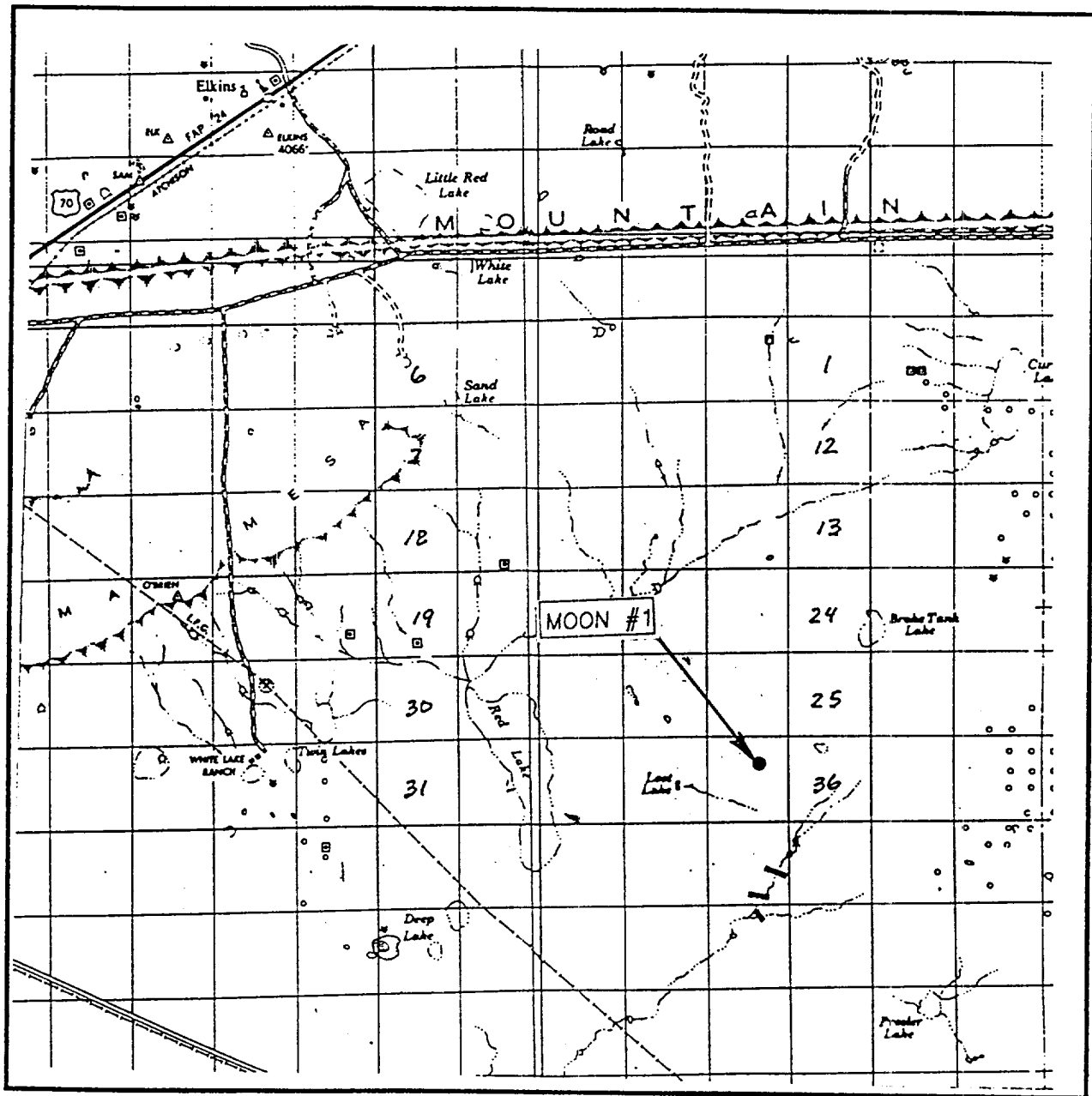
OPERATOR MARALO LLC.

LEASE MOON

U.S.G.S. TOPOGRAPHIC MAP
PRESLER LAKE, N.M.

JOHN WEST SURVEYING
HOBBS, NEW MEXICO
(505) 393-3117

VICINITY MAP



SCALE: 1" = 2 MILES

SEC. 35 TWP. 8-S RGE. 29-E

SURVEY N.M.P.M.

COUNTY CHAVES

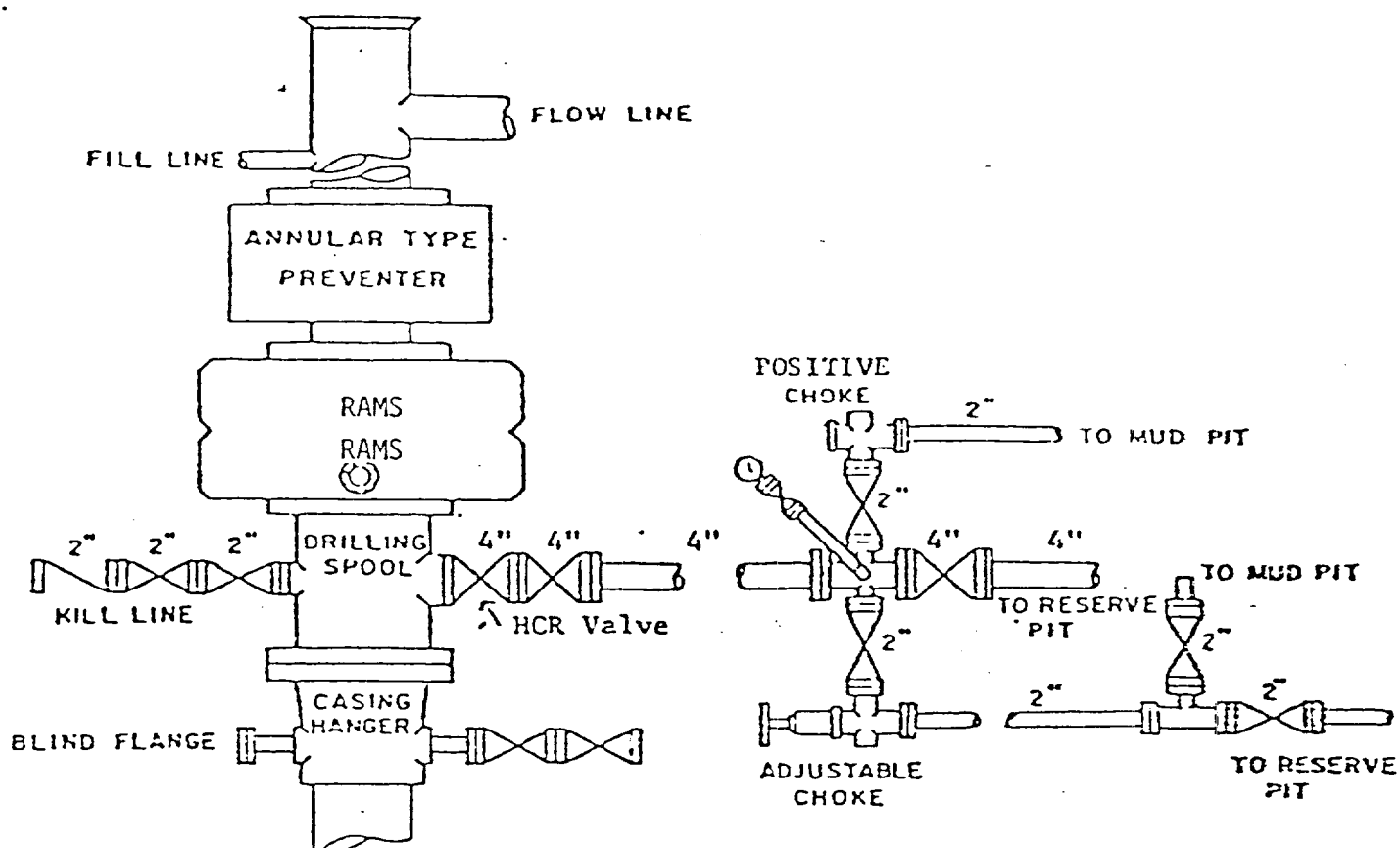
DESCRIPTION 1980' FNL & 1980' FEL

ELEVATION 4030'

OPERATOR MARALO LLC

LEASE MOON

JOHN WEST SURVEYING
HOBBS, NEW MEXICO
(505) 393-3117



BOP STACK

3000 PSI WORKING PRESSURE

BOP ARRANGEMENT