

DISTRICT I  
1625 N. French Dr., Hobbs, NM 88240

DISTRICT II  
811 South First, Artesia, NM 88210

DISTRICT III  
1000 Rio Brazos Rd., Aztec, NM 87410

DISTRICT IV  
2040 South Pacheco, Santa Fe, NM 87501

State of New Mexico  
Energy, Minerals and Natural Resources Department

OIL CONSERVATION DIVISION  
PO BOX 2088  
Santa Fe, NM 87504-2088

Form C-101

Revised March 17, 1999

Instructions on back

Submit to appropriate District Office

State Lease - 6 Copies

Fee Lease - 5 Copies

☐ AMENDED REPORT

APPLICATION FOR PERMIT TO DRILL, RE-ENTER, DEEPEN, PLUGBACK, OR ADD A ZONE

<sup>1</sup> Operator Name and Address Yates Petroleum Corporation 105 South Fourth Street Artesia, New Mexico 88210		<sup>2</sup> OGRID Number 025575
		<sup>3</sup> API Number 30- 005-63507
<sup>4</sup> Property Code 30700	<sup>5</sup> Property Name Ethan "BAW" State	<sup>6</sup> Well No. 1

<sup>7</sup> Surface Location

UL or lot no.	Section	Township	Range	Lot Idn	Feet from the	North/South Line	Feet from the	East/West Line	County
J	4	11S	27E		660'	North	1980'	East	Chaves

<sup>8</sup> Proposed Bottom Hole Location If Different From Surface

UL or lot no.	Section	Township	Range	Lot Idn	Feet from the	North/South Line	Feet from the	East/West Line	County
<sup>9</sup> Proposed Pool 1 <del>Under Comanche Springs; Pre-Permian</del>					<sup>10</sup> Proposed Pool 2				

<sup>11</sup> Work Type Code N	<sup>12</sup> Well Type Code G	<sup>13</sup> Cable/Rotary R	<sup>14</sup> Lease Type Code S	<sup>15</sup> Ground Level Elevation 3695'
<sup>16</sup> Multiple N	<sup>17</sup> Proposed Depth 6885'	<sup>18</sup> Formation Basement	<sup>19</sup> Contractor Not Determined	<sup>20</sup> Spud Date ASAP

<sup>21</sup> Proposed Casing and Cement Program

Hole Size	Casing Size	Casing weight/feet	Setting Depth	Sacks of Cement	Estimated TOC
12 1/4"	8 5/8"	24#	600'	400 sx	Surface
7 7/8"	5 1/2"	15.5#	6885'	550 sx	** TOC 4150
** Cement to cover all oil, gas & waterbearing zones					

<sup>22</sup> Describe the proposed program. If this application is to DEEPEN or PLUG BACK give the data on the present productive zone and proposed new productive zone. Describe the blowout prevention program, if any. Use additional sheets if necessary.

Yates Petroleum Corporation proposes to drill and test the Basement and intermediate formations. Approximately 600' of surface casing will be set and cement circulated to shut off gravel and cavings. If commercial, production casing will be run and cemented, will perforated and stimulated as needed for production.

MUD PROGRAM: 0-600' FW Gel/Paper/LCM; 600'-4600' Cut Brine/Brine; 4600'-6885' Starch/Salt Gel.

BOPE PROGRAM: A 2000# BOPE will be installed on the 8 5/8" casing and tested daily.

<sup>23</sup> I hereby certify that the information given above is true and complete to the best of my knowledge and belief.		OIL CONSERVATION DIVISION	
Signature: <i>Clifton R. May</i>		Approved by: <i>[Signature]</i>	
Printed name: Clifton R. May		Title: <i>District Supervisor</i>	
Title: Regulatory Agent		Approval: <i>13 2003</i>	Expiration Date: <i>13 2003</i>
Date: 10/08/02	Phone: (505) 748-1471	Conditions of Approval Attached <input type="checkbox"/>	

DISTRICT I  
1875 N. French Dr., Hobbs, NM 88240

DISTRICT II  
811 South First, Artesia, NM 88210

DISTRICT III  
1000 Rio Brazos Rd., Aztec, NM 87410

DISTRICT IV  
2040 South Pacheco, Santa Fe, NM 87506

State of New Mexico  
Energy, Minerals and Natural Resources Department

Form C-102  
Revised March 17, 1999  
Instruction on back  
Submit to Appropriate District Office  
State Lease - 4 Copies  
Fee Lease - 3 Copies

OIL CONSERVATION DIVISION

P.O. Box 2088  
Santa Fe, New Mexico 87504-2088

☐ AMENDED REPORT

WELL LOCATION AND ACREAGE DEDICATION PLAT

API Number	Pool Code	Pool Name
		Wildcat Basement
Property Code	Property Name	Well Number
	ETHAN "BAW" STATE	1
OGRID No.	Operator Name	Elevation
025575	YATES PETROLEUM CORPORATION	3695

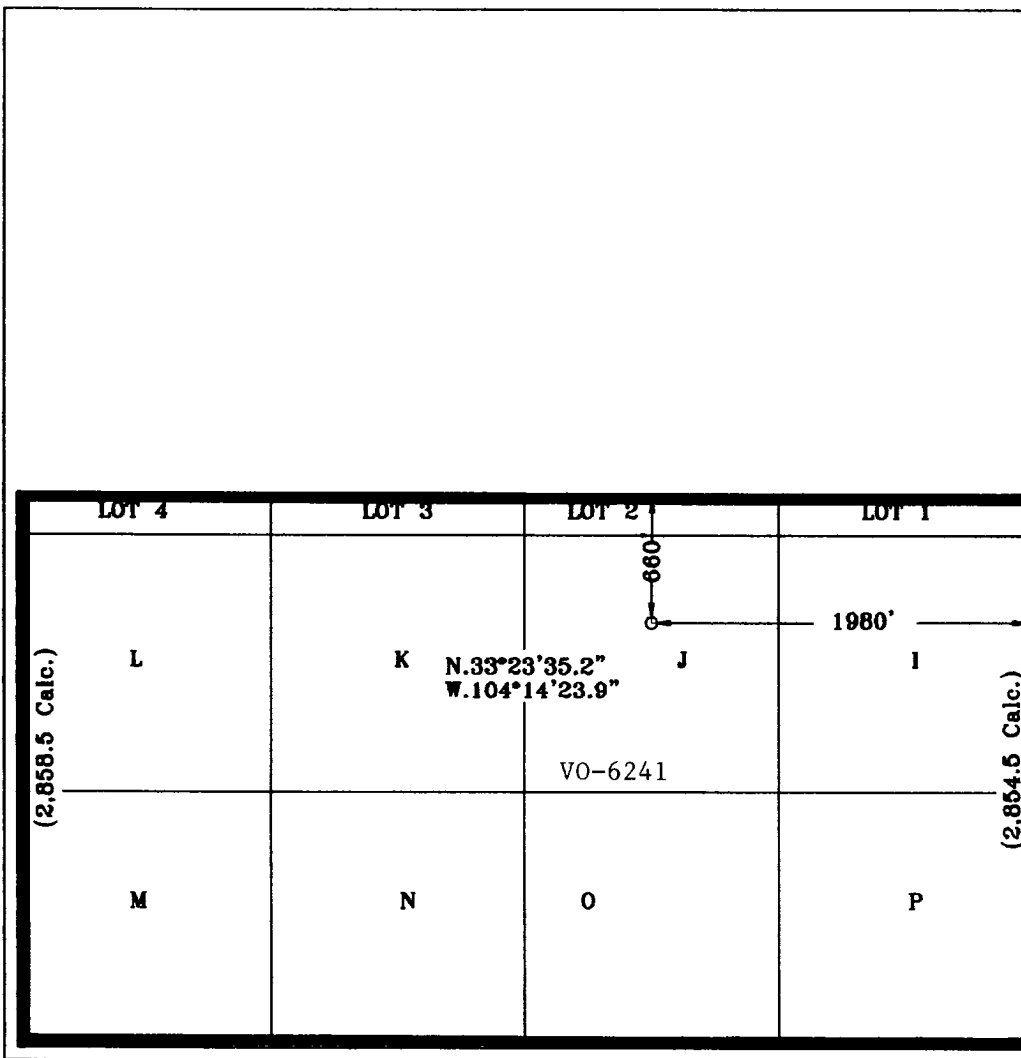
Surface Location

UL or lot No.	Section	Township	Range	Lot Idn	Feet from the	North/South line	Feet from the	East/West line	County
J	4	11S	27E		660	NORTH	1980	EAST	CHAVES

Bottom Hole Location If Different From Surface

UL or lot No.	Section	Township	Range	Lot Idn	Feet from the	North/South line	Feet from the	East/West line	County
Dedicated Acres	Joint or Infill	Consolidation Code	Order No.						
350									

NO ALLOWABLE WILL BE ASSIGNED TO THIS COMPLETION UNTIL ALL INTERESTS HAVE BEEN CONSOLIDATED  
OR A NON-STANDARD UNIT HAS BEEN APPROVED BY THE DIVISION



OPERATOR CERTIFICATION

I hereby certify the the information  
contained herein is true and complete to the  
best of my knowledge and belief.

*Clifton R. May*  
Signature

Clifton R. May  
Printed Name

Regulatory Agent  
Title

10/8/2002  
Date

SURVEYOR CERTIFICATION

I hereby certify that the well location shown  
on this plat was plotted from field notes of  
actual surveys made by me or under my  
supervision, and that the same is true and  
correct to the best of my belief.

9/19/2002

Date Surveyed

Signature & Seal

Professional Surveyor

HELEN L. JONES

NEW MEXICO

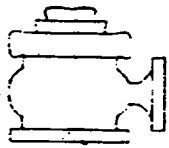
3640

PROFESSIONAL SURVEYOR

Certification No. Henschel Jones RLS 3640

PROFESSIONAL

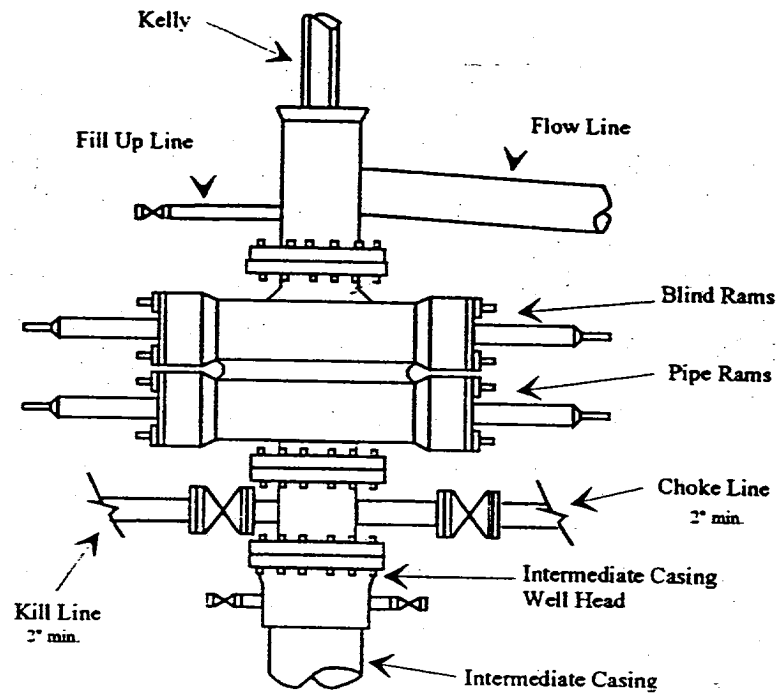
GENERAL SURVEYING COMPANY



# Yates Petroleum Corporation

BOP-2

## Typical 2,000 psi Pressure System Schematic Double Ram Preventer Stack



Typical 2,000 psi choke manifold assembly with at least these minimum features

