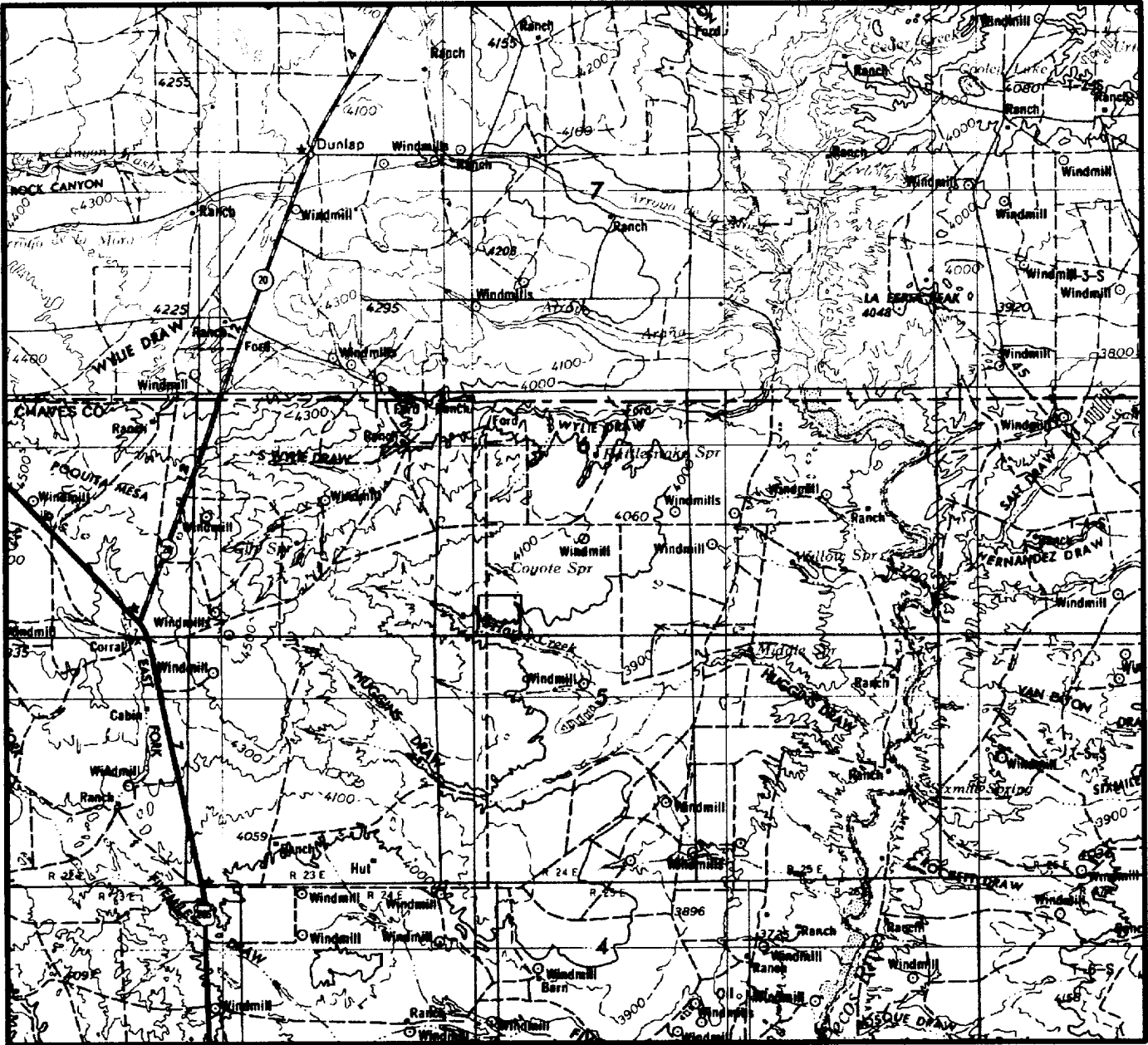


VICINITY MAP



SECTION 32 TWP T-4-S RGE R-25-E
 SURVEY NEW MEXICO PRINCIPAL MERIDIAN
 COUNTY CHAVES STATE NM
 DESCRIPTION 1980' FNL & 1980' FWL

OPERATOR RELIANCE ENERGY, INC.
 LEASE WILLOW SPRING "32" STATE #6

DISTANCE & DIRECTION FROM JCT. U.S. 285 AND S.H.
20 ±40 MILES NORTH OF ROSWELL, GO SOUTH ±7.0
MILES ON U.S. 285, THENCE EAST AND NORTHEASTERLY
15.5 MILES ON CO. RD. 44, THENCE SOUTHEAST 0.7
TO A POINT ±150' SOUTH OF LOCATION

This location has been very carefully staked on the ground according to the best official survey records, maps, and other data available to us.
 Review this plat and notify us immediately of any possible discrepancy.

TOPOGRAPHIC LAND SURVEYORS
Surveying & Mapping for the Oil & Gas Industry

1307 N. HOBART
 PAMPA, TX. 79065
 (800) 658-6382

6709 N. CLASSEN BLVD.
 OKLAHOMA CITY, OK. 73116
 (800) 654-3219

2903 N. BIG SPRING
 MIDLAND, TX. 79705
 (800) 767-1653