

District I  
1625 N. French Dr., Hobbs, NM 88240  
District II  
811 South First, Artesia, NM 88210  
District III  
1000 Rio Brazos Road, Aztec, NM 87410  
District IV  
2040 South Pacheco, Santa Fe, NM 87505

State of New Mexico  
Energy Minerals and Natural Resources

Oil Conservation Division  
2040 South Pacheco  
Santa Fe, NM 87505

Form C-101  
Revised March 17, 1999

Submit to appropriate District Office  
State Lease - 6 Copies  
Fee Lease - 5 Copies

☐ AMENDED REPORT

APPLICATION FOR PERMIT TO DRILL, RE-ENTER, DEEPEN, PLUG BACK, OR ADD A ZONE

<sup>1</sup> Operator Name and Address Pure Resources, L.P. 500 W. Illinois Midland, Texas 79701		<sup>2</sup> OGRID Number 150628
<sup>3</sup> API Number 30-005-63220		
<sup>4</sup> Property Code 30928	<sup>5</sup> Property Name Waller "23"	<sup>6</sup> Well No. 1

<sup>7</sup> Surface Location

UL or lot no.	Section	Township	Range	Lot Idn	Feet from the	North/South line	Feet from the	East/West line	County
I	23	12 S	28 E		2,073	South	983	East	Chaves

<sup>8</sup> Proposed Bottom Hole Location If Different From Surface

UL or lot no.	Section	Township	Range	Lot Idn	Feet from the	North/South line	Feet from the	East/West line	County

<sup>9</sup> Proposed Pool 1 Undesignated (Devonian)	<sup>10</sup> Proposed Pool 2 Undesignated
---	---

<sup>11</sup> Work Type Code N	<sup>12</sup> Well Type Code O & G	<sup>13</sup> Cable/Rotary R	<sup>14</sup> Lease Type Code P	<sup>15</sup> Ground Level Elevation 3,640'
<sup>16</sup> Multiple No	<sup>17</sup> Proposed Depth 8,600'	<sup>18</sup> Formation Devonian	<sup>19</sup> Contractor Patterson-UTI	<sup>20</sup> Spud Date 12/07/2002

<sup>21</sup> Proposed Casing and Cement Program

Hole Size	Casing Size	Casing weight/foot	Setting Depth	Sacks of Cement	Estimated TOC
17-1/2"	13-3/8"	48	350'	325	Surface
11"	8-5/8"	24	1,800'	425	Surface
7-7/8"	5-1/2"	17	8,600'	1,299	Surface

<sup>22</sup> Describe the proposed program. If this application is to DEEPEN or PLUG BACK, give the data on the present productive zone and proposed new productive zone.

Describe the blowout prevention program, if any. Use additional sheets if necessary.

Pure Resources, L. P. plans to drill the Waller "23" No. 1 well to a depth of 8,600' and complete in the Devonian formation (or as Wildcat).

Proposed casing points are at 350', 1,800' and 8,600'. The rig is equipped with Shaffer 11", 3K WP Type E BOP with H2S trim; a Shaffer Spherical 11", 3K annular with H2S trim and a 2", 5K choke manifold. An accumulator system will be used to remotely operate the equipment. A rotating head will be used. A SRRAG configuration will be used once the surface casing is set and until TD is reached.

(See attached BOP schematic)

<sup>23</sup> I hereby certify that the information given above is true and complete to the best of my knowledge and belief.

Signature:

*Alan W. Bohling*

Printed Name: Alan W. Bohling

Title: Regulatory Analyst

Date: 11/25/2002

Phone: (915)498-8662

OIL CONSERVATION DIVISION

Approved by:

ORIGINAL SIGNED BY TIM W. GUM  
DISTRICT II SUPERVISOR

Title:

Approval Date:

DEC 06 2002

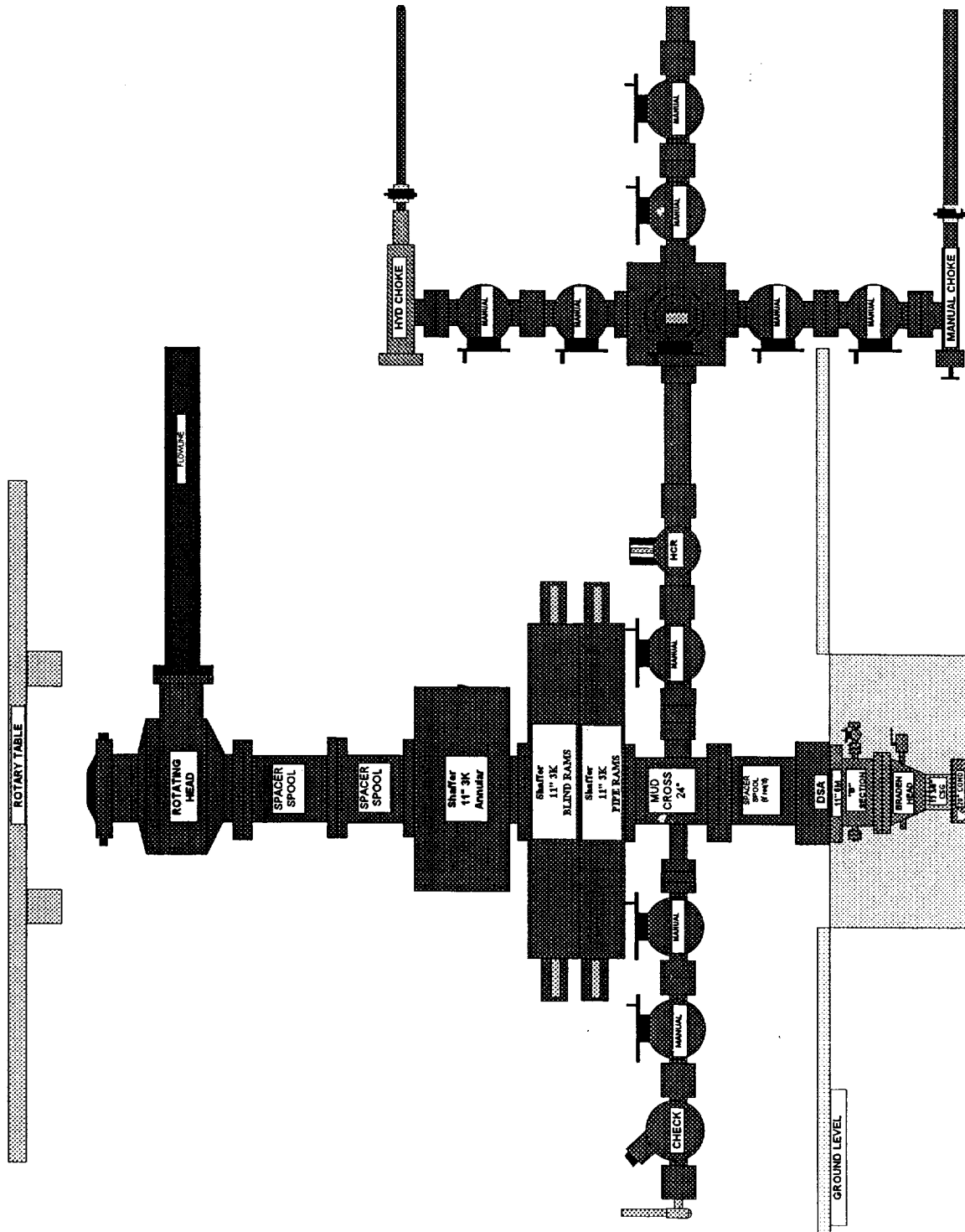
Expiration Date:

DEC 06 2003

Conditions of Approval:

Attached ☐

Pure Resources  
Patterson-UTI #495  
BOP EQUIPMENT



☐ AMENDED REPORT

## WELL LOCATION AND ACREAGE DEDICATION PLAT

API Number		Pool Code	Pool Name
			Undesignated (Devonian)
Property Code	Property Name WALLER "23"		Well Number 1
OGRID No. 150628	Operator Name PURE RESOURCES, L.P.		Elevation 3640

### Surface Location

UL or lot No.	Section	Township	Range	Lot Idn	Feet from the	North/South line	Feet from the	East/West line	County
1	23	12 S	28 E		2073	SOUTH	983	EAST	CHAVES

## Bottom Hole Location If Different From Surface

UL or lot No.	Section	Township	Range	Lot Idn	Feet from the	North/South line	Feet from the	East/West line	County
Dedicated Acres 320	Joint or Infill	Consolidation Code		Order No.					

NO ALLOWABLE WILL BE ASSIGNED TO THIS COMPLETION UNTIL ALL INTERESTS HAVE BEEN CONSOLIDATED OR A NON-STANDARD UNIT HAS BEEN APPROVED BY THE DIVISION

<div style="border: 2px dashed black; width: 80%; margin: 0 auto; padding: 10px; position: relative;"> <div style="position: absolute; top: 50%; left: 50%; transform: translate(-50%, -50%);"> <p style="margin: 0;"><u>Plane Coordinate</u></p> <p style="margin: 0;">X = 572,194.0</p> <p style="margin: 0;">Y = 822,761.0</p> </div> <div style="position: absolute; top: 10%; right: 10%; text-align: center;"> <p>983'</p> </div> <div style="position: absolute; bottom: 10%; left: 10%; text-align: center;"> <p>2073'</p> </div> </div>	<div style="border: 1px solid black; padding: 5px;"> <p style="text-align: center; margin: 0;"><b>OPERATOR CERTIFICATION</b></p> <p style="font-size: small; margin: 5px 0;">I hereby certify the the information contained herein is true and complete to the best of my knowledge and belief.</p> <div style="margin-top: 10px;"> </div> <p style="margin: 0;">Signature</p> <p style="margin: 0;">Alan W. Bohling</p> <p style="margin: 0;">Printed Name</p> <p style="margin: 0;">Regulatory Analyst</p> <p style="margin: 0;">Title</p> <p style="margin: 0;">11/26/2002</p> <p style="margin: 0;">Date</p> </div> <div style="border: 1px solid black; padding: 5px; margin-top: 10px;"> <p style="text-align: center; margin: 0;"><b>SURVEYOR CERTIFICATION</b></p> <p style="font-size: small; margin: 5px 0;">I hereby certify that the well location shown on this plat was plotted from field notes of actual surveys made by me or under my supervision and that the same is true and correct to the best of my belief.</p> <div style="margin-top: 10px;"> <p style="text-align: center;">November 19, 2002</p> <p style="margin: 0;">Date Surveyed</p> <div style="display: flex; justify-content: space-between; align-items: center;"> <div style="text-align: center;"> <p style="margin: 0;">Signature &amp; Seal of Professional Surveyor</p> </div> <div style="text-align: right;">LVA</div> </div> </div> <div style="margin-top: 10px;"> <p style="margin: 0;">W.O. Num. 2002-0699-S</p> <p style="margin: 0;">Certificate No. MACON McDONALD 12185</p> </div> </div>
<p><b>NOTE:</b></p> <p>1) Plane Coordinates shown hereon are Transverse Mercator and Conform to the "New Mexico Coordinate System", New Mexico East Zone. Distances shown hereon are mean horizontal surface values.</p>	

DISTRICT I  
1625 N. French Dr., Hobbs, NM 88240

State of New Mexico  
Energy, Minerals & Natural Resources Department

Form C-102  
Revised August 15, 2000  
Submit to Appropriate District Office  
State Lease - 4 Copies  
Fee Lease - 3 Copies

DISTRICT II  
P.O. Drawer DD, Artesia, NM 88211-0719

DISTRICT III  
1000 Rio Brazos Rd., Aztec, NM 87410

DISTRICT IV  
2040 South Pacheco, Santa Fe, NM 87505

OIL CONSERVATION DIVISION  
2040 South Pacheco  
Santa Fe, NM 87505

☐ AMENDED REPORT

WELL LOCATION AND ACREAGE DEDICATION PLAT

API Number	Pool Code	Pool Name
		Undesignated (Devonian)
Property Code	Property Name WALLER "23"	Well Number 1
OGRID No. 150628	Operator Name PURE RESOURCES, L.P.	Elevation 3640

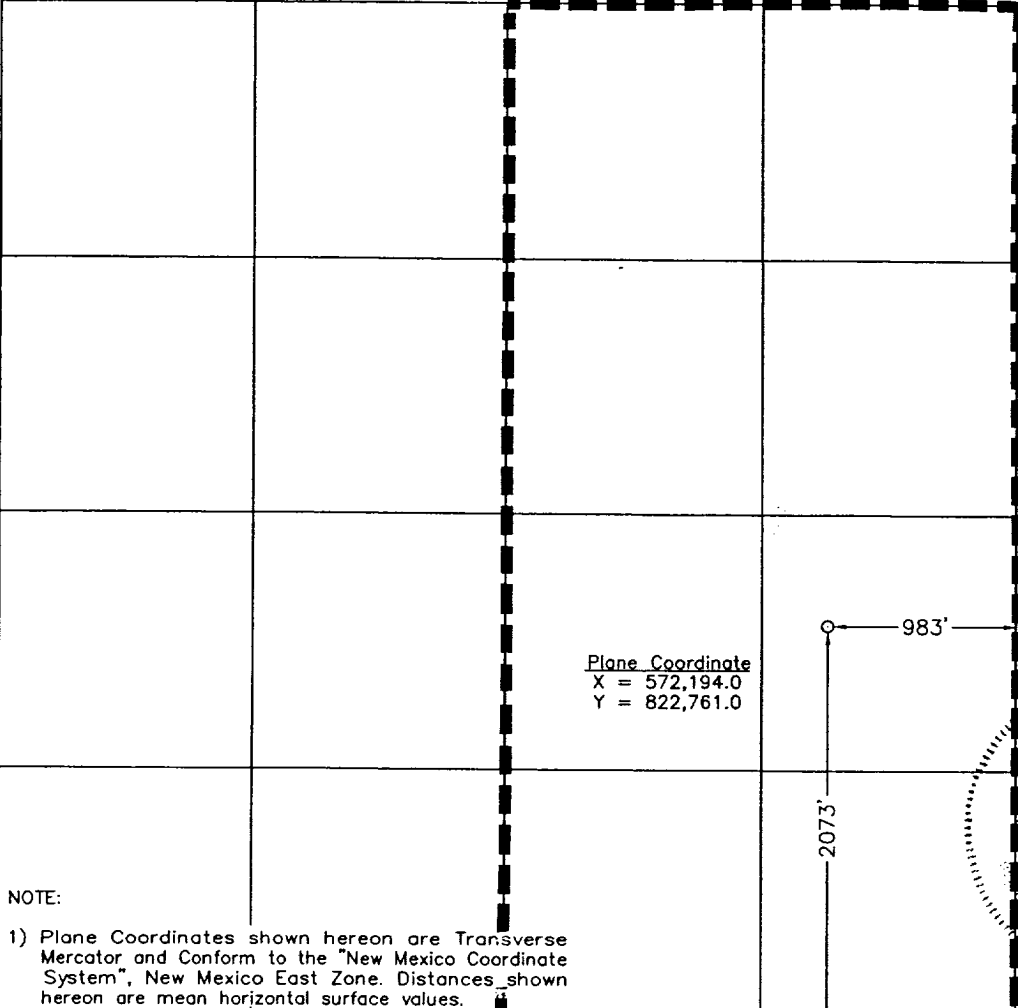
Surface Location

UL or lot No.	Section	Township	Range	Lot Idn	Feet from the	North/South line	Feet from the	East/West line	County
1	23	12 S	28 E		2073	SOUTH	983	EAST	CHAVES

Bottom Hole Location If Different From Surface

UL or lot No.	Section	Township	Range	Lot Idn	Feet from the	North/South line	Feet from the	East/West line	County
Dedicated Acres 320	Joint or Infill	Consolidation Code	Order No.						

NO ALLOWABLE WILL BE ASSIGNED TO THIS COMPLETION UNTIL ALL INTERESTS HAVE BEEN CONSOLIDATED OR A NON-STANDARD UNIT HAS BEEN APPROVED BY THE DIVISION

 <p>Plane Coordinate X = 572,194.0 Y = 822,761.0</p> <p>NOTE: 1) Plane Coordinates shown hereon are Transverse Mercator and Conform to the "New Mexico Coordinate System", New Mexico East Zone. Distances shown hereon are mean horizontal surface values.</p>	<p>OPERATOR CERTIFICATION</p> <p>I hereby certify the the information contained herein is true and complete to the best of my knowledge and belief.</p> <p><i>Alan W. Bohling</i> Signature Alan W. Bohling Printed Name Regulatory Analyst Title 11/26/2002 Date</p> <p>SURVEYOR CERTIFICATION</p> <p>I hereby certify that the well location shown on this plat was plotted from field notes of actual surveys made by me or under my supervision and that the same is true and correct to the best of my belief.</p> <p>November 19, 2002 Date Surveyed Signature &amp; Seal of Professional Surveyor LVA W.O. Num. 2002-0699-S Certificate No. MACON McDONALD 12185</p>
--	---

DISTRICT I  
1625 N. French Dr., Hobbs, NM 88240

State of New Mexico  
Energy, Minerals & Natural Resources Department

Form C-102  
Revised August 15, 2000  
Submit to Appropriate District Office  
State Lease - 4 Copies  
Fee Lease - 3 Copies

DISTRICT II  
P.O. Drawer DD, Artesia, NM 88211-0719

DISTRICT III  
1000 Rio Brazos Rd., Artesia, NM 87410

OIL CONSERVATION DIVISION  
2040 South Pacheco  
Santa Fe, NM 87505

DISTRICT IV  
2040 South Pacheco, Santa Fe, NM 87505

☐ AMENDED REPORT

WELL LOCATION AND ACREAGE DEDICATION PLAT

API Number	Pool Code	Pool Name
		Undesignated (Devonian)
Property Code	Property Name WALLER "23"	Well Number 1
OGRID No. 150628	Operator Name PURE RESOURCES, L.P.	Elevation 3640

Surface Location

UL or lot No.	Section	Township	Range	Lot Idn	Feet from the	North/South line	Feet from the	East/West line	County
1	23	12 S	28 E		2073	SOUTH	983	EAST	CHAVES

Bottom Hole Location If Different From Surface

UL or lot No.	Section	Township	Range	Lot Idn	Feet from the	North/South line	Feet from the	East/West line	County
Dedicated Acres 320	Joint or Infill	Consolidation Code	Order No.						

NO ALLOWABLE WILL BE ASSIGNED TO THIS COMPLETION UNTIL ALL INTERESTS HAVE BEEN CONSOLIDATED OR A NON-STANDARD UNIT HAS BEEN APPROVED BY THE DIVISION

<p>NOTE:</p> <p>1) Plane Coordinates shown hereon are Transverse Mercator and Conform to the "New Mexico Coordinate System", New Mexico East Zone. Distances shown hereon are mean horizontal surface values.</p>	<p>Plane Coordinate X = 572,194.0 Y = 822,761.0</p>		<p>983'</p> <p>2073'</p>		<p>OPERATOR CERTIFICATION</p> <p>I hereby certify the the information contained herein is true and complete to the best of my knowledge and belief.</p> <p><i>Alan W. Bohling</i></p> <p>Signature</p> <p>Alan W. Bohling</p> <p>Printed Name</p> <p>Regulatory Analyst</p> <p>Title</p> <p>11/26/2002</p> <p>Date</p>	
					<p>SURVEYOR CERTIFICATION</p> <p>I hereby certify that the well location shown on this plat was plotted from field notes of actual surveys made by me or under my supervision and that the same is true and correct to the best of my belief.</p> <p>November 19, 2002</p> <p>Date Surveyed</p> <p>Signature &amp; Seal of Professional Surveyor</p> <p>LVA</p>	
					<p>W.O. Num. 2002-0699-S</p>	
					<p>Certificate No. MACON McDONALD 12185</p>	

Topographic map showing sections 13, 14, 15, 22, 23, 24, 25, 26, and 27. The map includes contour lines (3600, 3620, 3640, 3660) and a dashed line. Key features include the Arroyo and Long creeks, and the well location marked with a circle and labeled "WALLER '23' #1". The map is overlaid with a grid of section numbers.

CONTOUR INTERVAL:  
MALSTROM RANCH - 10'

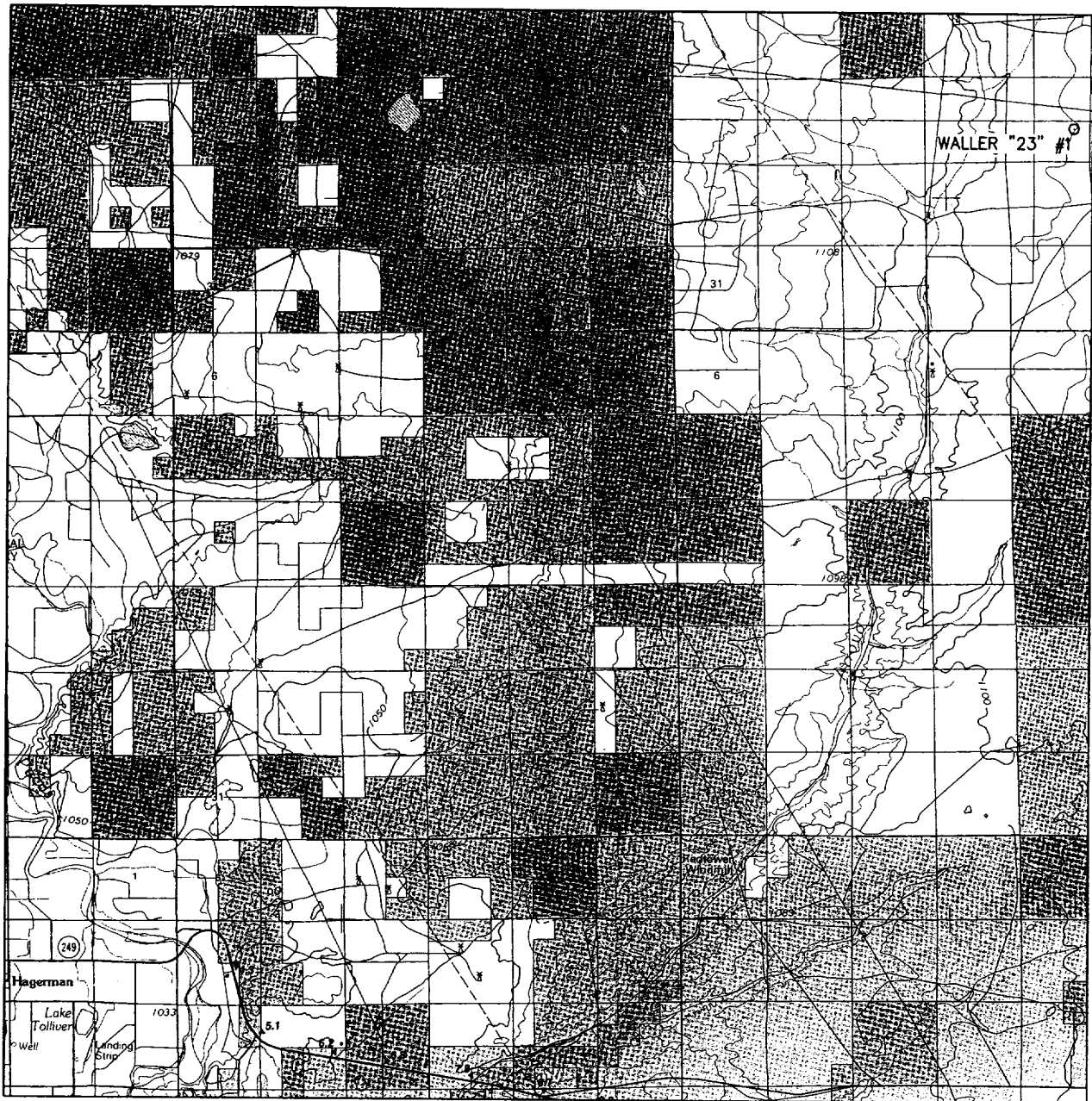
U.S.G.S. TOPOGRAPHIC MAP  
MALSTROM RANCH, N.M.



**WEST  
COMPANY**  
of Midland, Inc.

110 W. LOUISIANA, STE. 110  
MIDLAND TEXAS, 79701  
(915) 687-0865 - (915) 687-0868 FAX

# VICINITY MAP



SCALE: 1" = 2 MILES

SEC. 23 TWP. 12-S RGE. 28-E

SURVEY N.M.P.M.

COUNTY CHAVES

DESCRIPTION 2073' FSL & 983' FEL

ELEVATION 3640

OPERATOR PURE RESOURCES, L.P.

LEASE WALLER "23"



**WEST**  
**COMPANY**  
of Midland, Inc.

110 W. LOUISIANA, STE. 110  
MIDLAND TEXAS, 79701  
(915) 687-0865 - (915) 687-0868 FAX