

30-011-10001

| | |
|------------------------|---|
| NO. OF COPIES RECEIVED | 5 |
| DISTRIBUTION | |
| SANTA FE | 1 |
| FILE | 1 |
| U.S.G.S. | 2 |
| LAND OFFICE | |
| OPERATOR | 1 |

NEW MEXICO OIL CONSERVATION COMMISSION

APR 10 1968

ARTIFICIAL OFFICE

Form C-101
Revised 1-1-65

| |
|--|
| 5A. Indicate Type of Lease |
| STATE <input type="checkbox"/> FEE <input checked="" type="checkbox"/> |
| 5. State Oil & Gas Lease No. |

APPLICATION FOR PERMIT TO DRILL, DEEPEN, OR PLUG BACK

| | | | |
|--|--|---|--|
| 1a. Type of Work | | 7. Unit Agreement Name | |
| b. Type of Well OIL WELL <input checked="" type="checkbox"/> GAS WELL <input type="checkbox"/> OTHER <input type="checkbox"/> | | 8. Farm or Lease Name Earl Powell, Inc. | |
| 2. Name of Operator Texaco Inc. | | 9. Well No. 1 | |
| 3. Address of Operator P. O. Box 3109, Midland, Texas | | 10. Field and Pool, or Wildcat Wildcat | |
| 4. Location of Well UNIT LETTER A LOCATED 660 FEET FROM THE North LINE AND 660 FEET FROM THE East LINE OF SEC. 7 TWP. 2-N RGE. 26-E NMPM | | 2. County DeBaca | |
| 18. Proposed Depth 1800 | | 19A. Formation San Andres | |
| 20. Rotary or C.T. Rotary | | 21. Elevations (Show whether DE, RT, etc.) Not Available | |
| 21A. Kind & Status Plug. Bond \$10,000 Blanket | | 21B. Drilling Contractor Unknown | |
| 22. Approx. Date Work will start At once | | | |

23.

PROPOSED CASING AND CEMENT PROGRAM

| SIZE OF HOLE | SIZE OF CASING | WEIGHT PER FOOT | SETTING DEPTH | SACKS OF CEMENT | EST. TOP |
|--------------|----------------|-----------------|---------------|-----------------|------------------------------------|
| 9 - 7/8" | 7 - 5/8" | 24# | 730' | * 350 | 300% to circulate |
| 6 - 3/4" | 4 - 1/2" | 9.5# | 1800' | ** 250 | 200% to tie back to surface casing |

* Cement with 350 Sx Class "C" with 1% Calcium Chloride Cement must circulate (300% to circulate)

** Cement with 250 Sx Class "C" with 10# /Sx salt, 14.8# / gal. cement must circulate (200% to tie back Centralizers across prospective pay from logs. to surface casing)

COMPLETION PROGRAM

1. Perforate with 2 JSPF
2. Acidize with 500 gals. 15% N.E. Acid Swab Test
3. Reacidize with 2000 gals. 15% N.E. Acid.

FORMATION TOPS EXPECTED

| | | | |
|--------------------|-------|--------------------|-------|
| Triassk - Permian | 450' | San Andres Zone 9B | 1580' |
| San Andres | 730' | San Andres Zone 10 | 1675' |
| San Andres Zone 9A | 1400' | Total Depth | 1800' |

APPROVAL VALID
FOR 90 DAYS UNLESS
EXTENDED COMMENCED.

EXPIRES 7-9-68

IN ABOVE SPACE DESCRIBE PROPOSED PROGRAM: IF PROPOSAL IS TO DEEPEN OR PLUG BACK, GIVE DATA ON PRESENT PRODUCTIVE ZONE AND PROPOSED NEW PRODUCTIVE ZONE. GIVE BLOWOUT PREVENTER PROGRAM, IF ANY.

I hereby certify that the information above is true and complete to the best of my knowledge and belief.

Signed J. J. Keltner Title Division Civil Engineer Date
(This space for State Use)

APPROVED BY W. A. Sessett TITLE DATE APR 10 1968
CONDITIONS OF APPROVAL, IF ANY:

NE MEXICO OIL CONSERVATION COMMISSION
WELL LOCATION AND ACREAGE DEDICATION PLAT

Form C-102
Supersedes C-128
Effective 1-1-65

All distances must be from the outer boundaries of the Section.

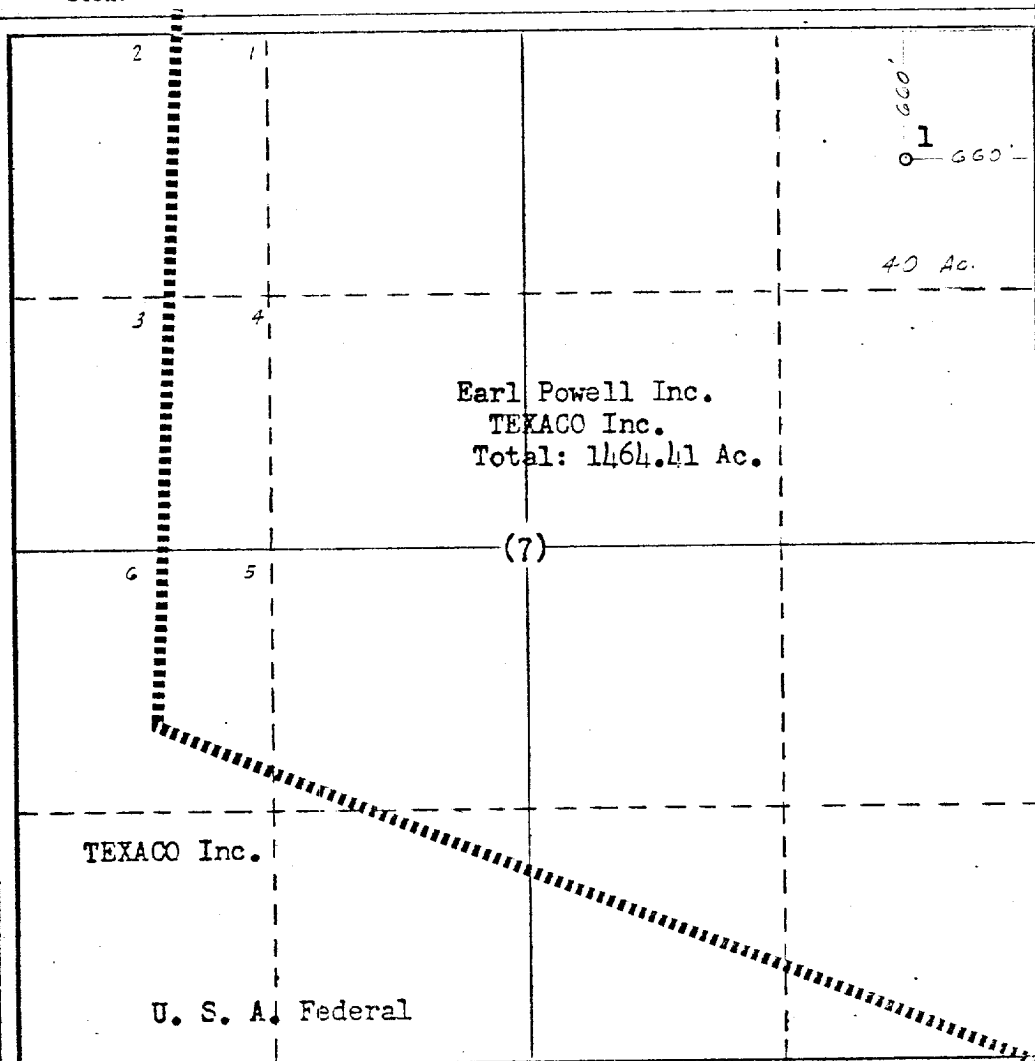
| | | | | | |
|--|--|-----------------------------------|-------------------------|---------------------------------------|--|
| Operator TEXACO Inc. | | Lease Earl Powell, Inc. | | Well No. 1 | |
| Unit Letter A | Section 7 | Township 2 North | Range 26 East | County DeBaca | |
| Actual Footage Location of Well: 660 feet from the North line and 660 feet from the East line Sec. 7 | | | | | |
| Ground Level Elev. Not Available | Producing Formation San Andres | Pool Wildcat | | Dedicated Acreage: 40 Acres | |

1. Outline the acreage dedicated to the subject well by colored pencil or hachure marks on the plat below.
2. If more than one lease is dedicated to the well, outline each and identify the ownership thereof (both as to working interest and royalty).
3. If more than one lease of different ownership is dedicated to the well, have the interests of all owners been consolidated by communitization, unitization, force-pooling, etc?

☐ Yes ☐ No If answer is "yes," type of consolidation _____

If answer is "no," list the owners and tract descriptions which have actually been consolidated. (Use reverse side of this form if necessary.) _____

No allowable will be assigned to the well until all interests have been consolidated (by communitization, unitization, forced-pooling, or otherwise) or until a non-standard unit, eliminating such interests, has been approved by the Commission.



CERTIFICATION

I hereby certify that the information contained herein is true and complete to the best of my knowledge and belief.

Name

J. J. Velten

Position

Division Civil Engineer

Company

TEXACO Inc.

Date

4/9/68

I hereby certify that the well location shown on this plat was plotted from field notes of actual surveys made by me or under my supervision, and that the same is true and correct to the best of my knowledge and belief.

Date Surveyed

4/9/68

Registered Professional Engineer and/or Land Surveyor

J. J. Velten

Certificate No.

8174