

NEW MEXICO OIL CONSERVATION COMMISSION
WELL LOCATION AND ACREAGE DEDICATION PLAT

Form C-102
Supersedes C-128
Effective 1-1-65

RECEIVED

All distances must be from the outer boundaries of the Section.

NOV 1 1971

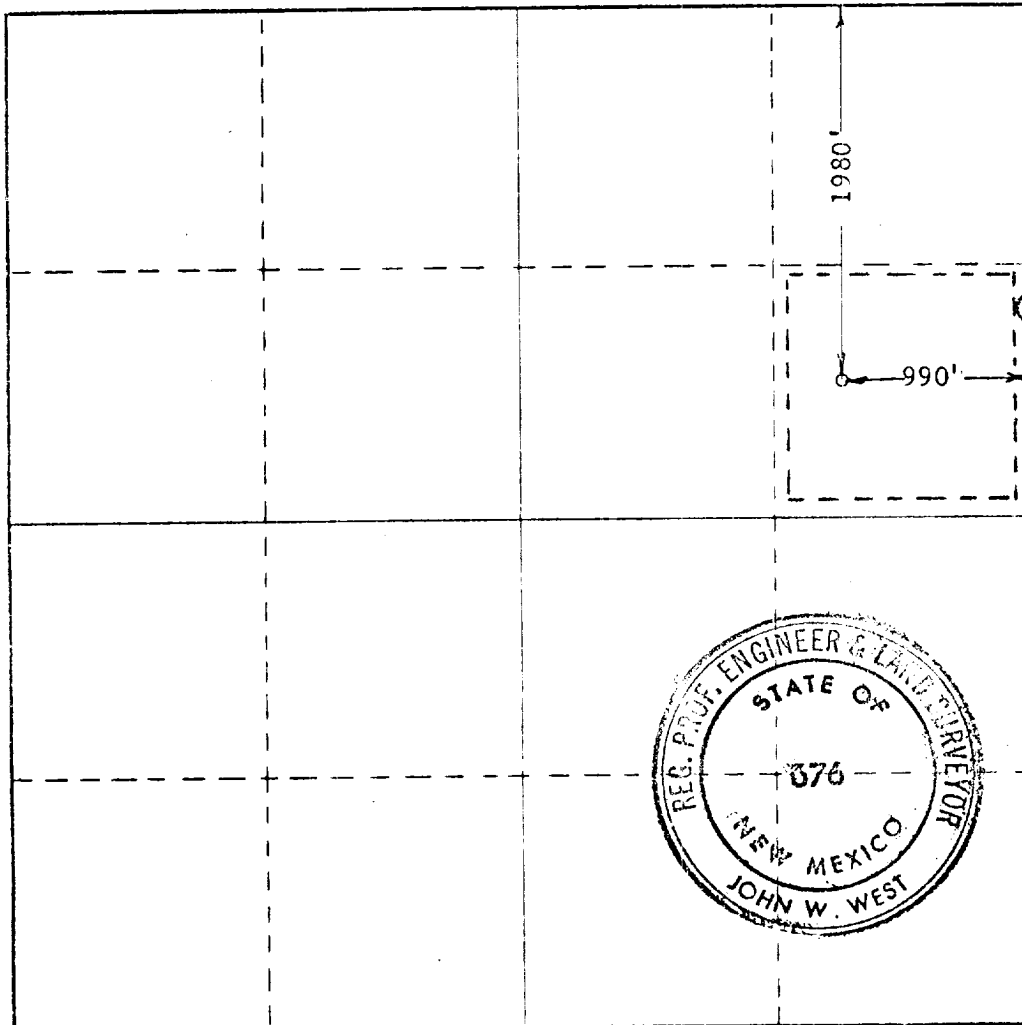
Operator CONTINENTAL OIL CO.			Lease WILLIAMS FED.			Well No. 1		
Unit Letter H	Section 31	Township 5 NORTH	Range 24 EAST	County DE BACA				
Actual Footage Location of Well: 1980 feet from the NORTH line and 990 feet from the EAST line								
Ground Level Elev. 4408	Producing Formation			Pool WILDCAT			Dedicated Acreage: 40 Acres	

1. Outline the acreage dedicated to the subject well by colored pencil or hatchure marks on the plat below.
2. If more than one lease is dedicated to the well, outline each and identify the ownership thereof (both as to working interest and royalty).
3. If more than one lease of different ownership is dedicated to the well, have the interests of all owners been consolidated by communitization, unitization, force-pooling, etc?

☐ Yes ☐ No If answer is "yes," type of consolidation _____

If answer is "no," list the owners and tract descriptions which have actually been consolidated. (Use reverse side of this form if necessary.) _____

No allowable will be assigned to the well until all interests have been consolidated (by communitization, unitization, forced-pooling, or otherwise) or until a non-standard unit, eliminating such interests, has been approved by the Commission.



CERTIFICATION

I hereby certify that the information contained herein is true and complete to the best of my knowledge and belief.

Name John D. Doyle
Position ADM. SUPERVISOR
Company CONTINENTAL OIL CO.
Date 11-9-71

I hereby certify that the well location shown on this plat was plotted from field notes of actual surveys made by me or under my supervision, and that the same is true and correct to the best of my knowledge and belief.

Date Surveyed
NOVEMBER 5, 1971

Registered Professional Engineer and/or Land Surveyor

John W. West
Certificate No. **676**

