

NO. OF COPIES RECEIVED	
DISTRIBUTION	
SANTA FE	
FILE	
U.S.G.S.	2
LAND OFFICE	
OPERATOR	

JAN 28 1982

O.C.D.

ARTESIA, OFFICE

5. Indicate Type of Lease  
STATE ☐ FLE ☒  
6. State Oil & Gas Lease No.

7. Unit Agreement Name

8. Form or Lease Name  
Diamond "L" Ranch 10

9. Well No.  
1

10. Field and Pool, or Wildcat  
X Wildcat Abo

11. County  
DeBaca

APPLICATION FOR PERMIT TO DRILL, DEEPEN, OR PLUG BACK

Type of Work

DRILL ☒ DEEPEN ☐ PLUG BACK ☐

Type of Well

OIL WELL ☐ GAS WELL ☒ OTHER ☐ SINGLE ZONE ☒ MULTIPLE ZONE ☐

Name of Operator  
Energy Resources Oil & Gas Corporation

Address of Operator  
Two Energy Square, 4849 Greenville Ave., #700, Dallas, Tx 75206

Location of Well  
UNIT LETTER B LOCATED 1980 FEET FROM THE East LINE  
660 North 10 2S 22E

15. Proposed Depth 5500'	16. Formation Abo	17. Rotary or C.T. Rotary
18. Kind & Status of Lease Blanket - Effective	19. Drilling Contractor Pace Drilling Co.	20. Approx. Date Work will start March 15, 1982

Elevations (show whether D.P., K.L., etc.)  
4346' G.L.

PROPOSED CASING AND CEMENT PROGRAM

SIZE OF HOLE	SIZE OF CASING	WEIGHT PER FOOT	SETTING DEPTH	SACKS OF CEMENT	TEST. TOP
17-1/2"	13-3/8"	54.5	400'±	200 sx CL "C"	Circulated
12-1/4"	8-5/8"	24	1500'±	765 sx CL "C"	Circulated
7-7/8"	4-1/2"	10.5	5500'±	600 sx CL "H"	-

B.O.P. - Exhibit "C" attached.

The well will spud with 17-1/2" bit and drilled to 400'±. Surface casing will be run and cement circulated to surface.

B.O.P. will be installed on the 13-3/8" and tested to 1000#. A 12-1/4" hole will be drilled to 1500'±. Casing will be run and cement circulated or grouted.

B.O.P. will be installed on the 8-5/8" and tested to 1000#. The shoe will tested to equivalent of 10.0# mud (100# psi above 8.8-9.0# mud).

APPROVAL VALID FOR 180 DAYS  
PERMIT NUMBER 79-82  
UNLESS DRILLING UNDERWAY

ABOVE SPACE DESCRIBE PROPOSED PROGRAM: IF PROPOSAL IS TO DEEPEN OR PLUG BACK, GIVE DATA ON PRESENT PRODUCTIVE ZONE AND PROPOSED NEW PRODUCTIVE ZONE. GIVE FLOWOUT PREVENTER PROGRAM, IF ANY.

I hereby certify that the information above is true and complete to the best of my knowledge and belief.

Signed Robert D. Baccus Title Operations Manager Date 12-21-81

(This space for State Use)

APPROVED BY Mike Williams TITLE Oil & Gas Inspector DATE JAN 4 1982

CONDITIONS OF APPROVAL, IF ANY:

NEW MEXICO OIL CONSERVATION COMMISSION  
WELL LOCATION AND ACREAGE DEDICATION PLAT

Form C-102  
Supersedes C-128  
Effective 1-1-65

All distances must be from the outer boundaries of the Section

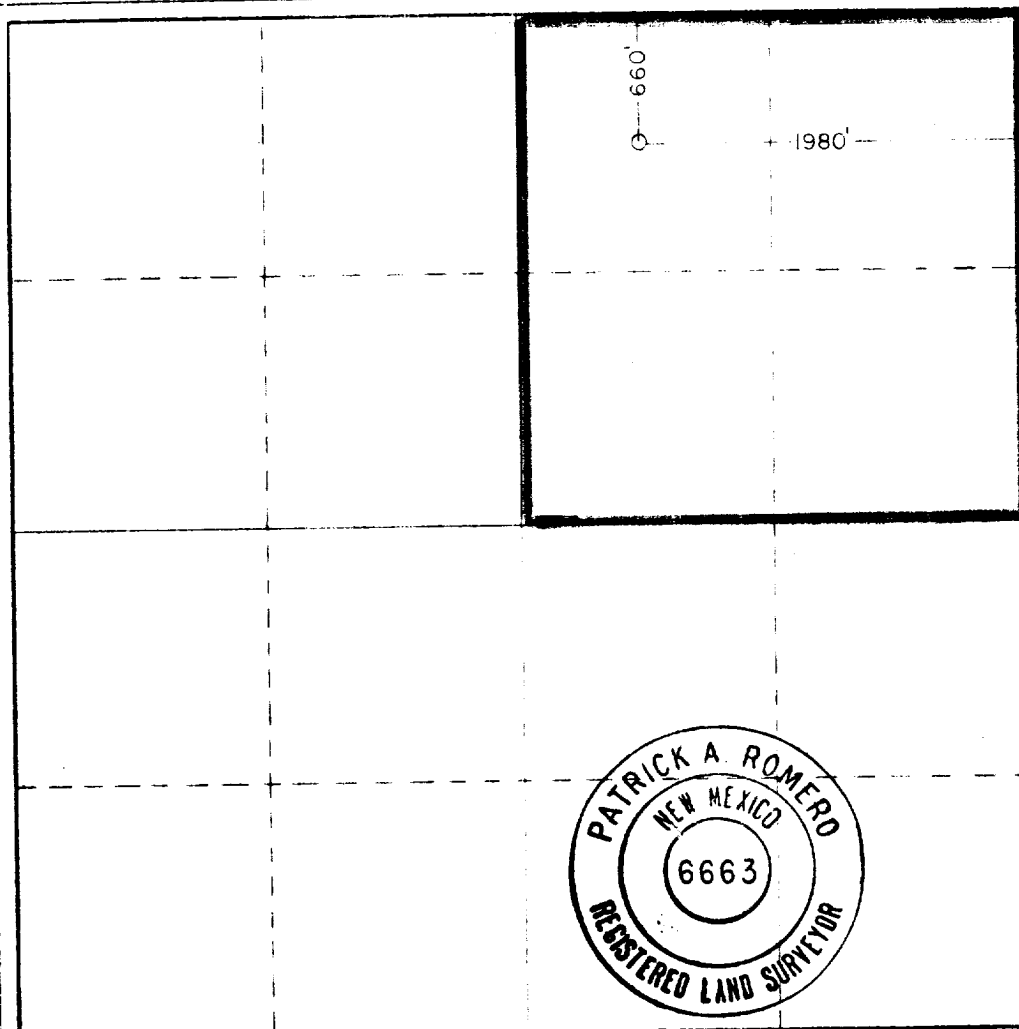
Operator <b>Energy Resources Oil &amp; Gas Corp.</b>		Lease <b>Diamond "L" Ranch 10</b>		Well No. <b>1</b>	
Unit Letter <b>B</b>	Section <b>10</b>	Township <b>2 South</b>	Range <b>22 East</b>	County <b>De Baca</b>	
Actual Footage Location of Well: <b>1980</b> feet from the <b>East</b> line and <b>660</b> feet from the <b>North</b> line					
Ground Level Elev. <b>4346</b>	Producing Formation <b>Abo</b>		Flow <b>Wildcat</b>		Dedicated Acreage: <b>160</b> Acres

- Outline the acreage dedicated to the subject well by colored pencil or hachure marks on the plat below.
- If more than one lease is dedicated to the well, outline each and identify the ownership thereof (both as to working interest and royalty)
- If more than one lease of different ownership is dedicated to the well, have the interests of all owners been consolidated by communitization, unitization, force-pooling, etc?

☐ Yes ☒ No If answer is "yes," type of consolidation \_\_\_\_\_

If answer is "no," list the owners and tract descriptions which have actually been consolidated (Use reverse side of this form if necessary) \_\_\_\_\_

No allowable will be assigned to the well until all interests have been consolidated (by communitization, unitization, forced-pooling, or otherwise) or until a non-standard unit, eliminating such interests, has been approved by the Commission.



CERTIFICATION

I hereby certify that the information contained herein is true and complete to the best of my knowledge and belief.

*Robert D. Bocell*

Robert D. Bocell

Operations Manager

Energy Resources Oil & Gas Corp.

12-21-81

I hereby certify that the well location shown on this plat was plotted from field notes of actual surveys made by me or under my supervision, and that the same is true and correct to the best of my knowledge and belief.

Date Surveyed  
Dec. 17, 1981

Registered Professional Engineer  
and/or Land Surveyor

*Patrick A. Romero*

Certificate No. **JOHN W. WEST 676**  
**PATRICK A. ROMERO 6663**  
**Ronald J. Eidson 3239**

0 330 660 990 1320 660 990 2310 2640 2000 1500 1000 500 0

Energy Resources Oil & Gas  
Diamond "L" Ranch 10, Sec. 10  
12S, R22E, DeBaca County, New  
Mexico

Exhibit "C"

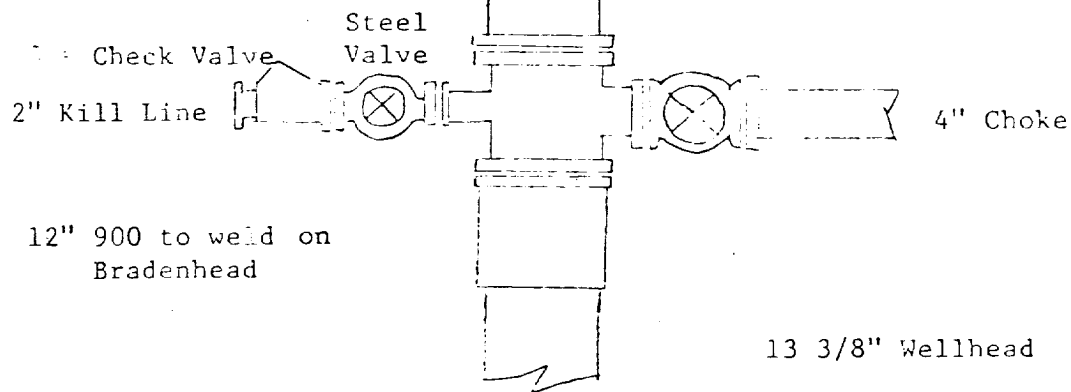
TYPE 39 SHAFFER

12" 900 B.O.P.

7" Flow Line

TOP - 3½" Rams

BOTTOM - Blind Rams



2" Standard Ball plug

2" Standard 2/2000# Ball Valve