

Artesia, NM 88210

UNITED STATES

DEPARTMENT OF THE INTERIOR

GEOLOGICAL SURVEY

APPLICATION FOR PERMIT TO DRILL, DEEPEN, OR PLUG BACK

1a. TYPE OF WORK

DRILL ☒DEEPEN ☐PLUG BACK ☐

b. TYPE OF WELL

OIL
WELL ☐GAS
WELL ☒OTHER ☐SINGLE
ZONE ☐

OIL & GAS

MULTIPLE
ZONE ☐

2. NAME OF OPERATOR

Yates Petroleum Corporation

ROSWELL, NEW MEXICO

3. ADDRESS OF OPERATOR

207 S. 4th, Artesia, New Mexico 88210

4. LOCATION OF WELL (Report location clearly and in accordance with any State requirements.)*

At surface

1980' FNL and 660' FWL

At proposed prod. zone
same

14. DISTANCE IN MILES AND DIRECTION FROM NEAREST TOWN OR POST OFFICE*

12 miles south of Ft. Sumner, New Mexico.

15. DISTANCE FROM PROPOSED*

LOCATION TO NEAREST

PROPERTY OR LEASE LINE, FT.

(Also to nearest drlg. unit line, if any)

660'

18. DISTANCE FROM PROPOSED LOCATION*

TO NEAREST WELL, DRILLING, COMPLETED,
OR APPLIED FOR, ON THIS LEASE, FT.

16. NO. OF ACRES IN LEASE

19. PROPOSED DEPTH

5800'

17. NO. OF ACRES ASSIGNED
TO THIS WELL

40

20. ROTARY OR CABLE TOOLS

Rotary

21. ELEVATIONS (Show whether DF, RT, GR, etc.)

3960.4' GL

22. APPROX. DATE WORK WILL START*

ASAP

23. PROPOSED CASING AND CEMENTING PROGRAM LEASE EXPIRES 2/29/84!

SIZE OF HOLE	SIZE OF CASING	WEIGHT PER FOOT	SETTING DEPTH	QUANTITY OF CEMENT
17 1/2"	13 3/8"	48# J-55	700'	700 sx
7 7/8"	4 1/2"	9.5# J-55	TD	750 sx

We propose to drill and test the Pre-Cambrian and intermediate formations. Approximately 700' of surface casing will be set and cement circulated to shut off gravel and caving. If needed (lost circulation) 9 5/8" intermediate casing will be run from 700' to 2000' and cemented with enough cement calculated to tie back into the surface casing. If commercial, production casing will be run and cemented with adequate cover, perforated and stimulated as needed for production.

MUD PROGRAM: FW gel/LCM to 700', native mud to 2000', water/gel/starch to TD.

BOP PROGRAM: BOP's will be installed at the offset and tested daily.

GAS NOT DEDICATED.

IN ABOVE SPACE DESCRIBE PROPOSED PROGRAM: If proposal is to deepen or plug back, give data on present productive zone and proposed new productive zone. If proposal is to drill or deepen directionally, give pertinent data on subsurface locations and measured and true vertical depths. Give blowout preventer program, if any.

24.

SIGNED

TITLE Regulatory Agent

DATE 2/27/84

(This space for Federal or State office use)

PERMIT NO.

APPROVAL DATE

APPROVED BY

S/Richard Bustin

TITLE

Associate District Manager

DATE

FEB 29 1984

CONDITIONS OF APPROVAL, IF ANY:

APPROVAL SUBJECT TO
GENERAL REQUIREMENTS AND
SPECIAL STIPULATIONS
ATTACHED

MEXICO OIL CONSERVATION COMMISSION
WELL LOCATION AND ACREAGE DEDICATION PLAT

Form C-102
 Supersedes C-128
 Effective 1-1-65

All distances must be from the outer boundaries of the Section.

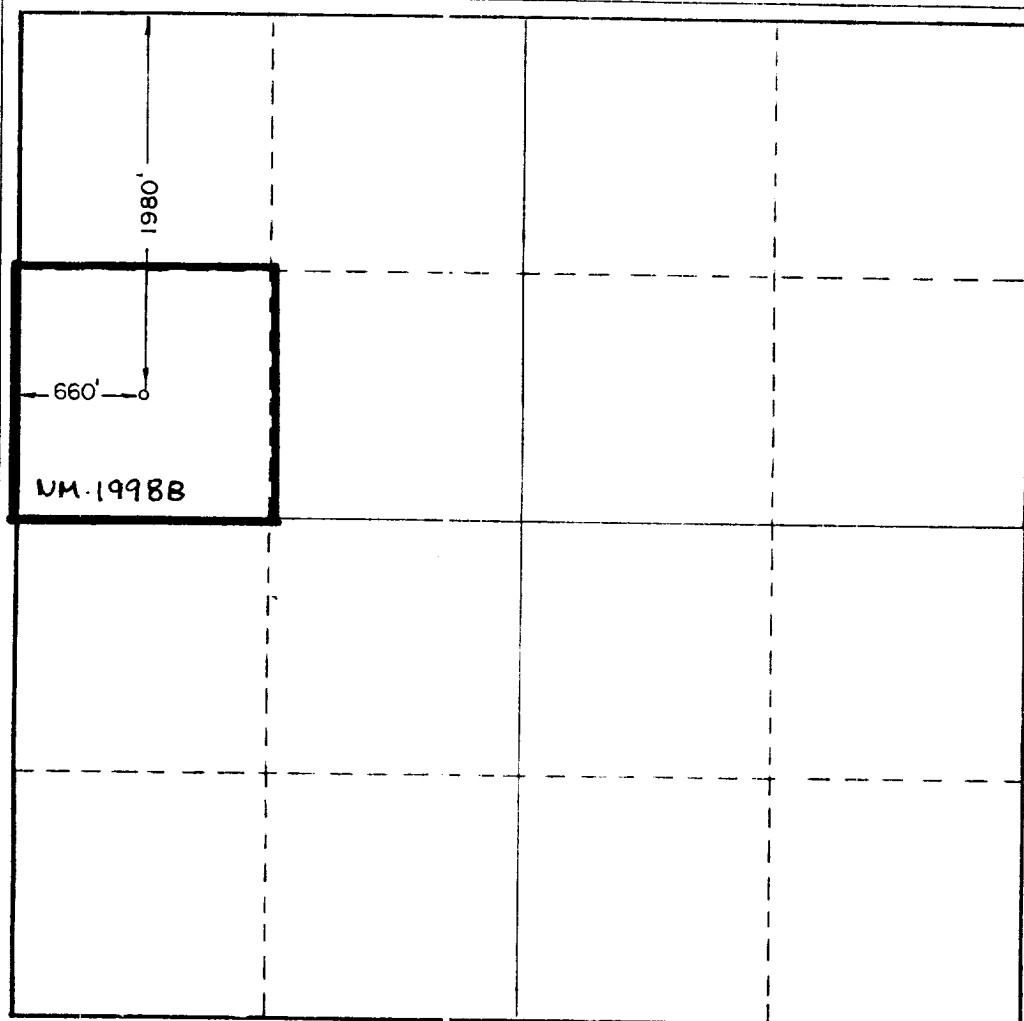
Operator YATES PETROLEUM CORPORATION			Lease Kidd "ZF" Federal		Well No. 1
Unit Letter E	Section 26	Township 1 North	Range 26 East	County De Baca	
Actual Footage Location of Well: 1980 feet from the North line and 660 feet from the West line					
Ground Level Elev. 3960.4	Producing Formation Permian		Pool WILDCAT	Dedicated Acreage: 40 Acres	

1. Outline the acreage dedicated to the subject well by colored pencil or hachure marks on the plat below.
2. If more than one lease is dedicated to the well, outline each and identify the ownership thereof (both as to working interest and royalty).
3. If more than one lease of different ownership is dedicated to the well, have the interests of all owners been consolidated by communitization, unitization, force-pooling, etc?

☐ Yes ☐ No If answer is "yes," type of consolidation _____

If answer is "no," list the owners and tract descriptions which have actually been consolidated. (Use reverse side of this form if necessary.) _____

No allowable will be assigned to the well until all interests have been consolidated (by communitization, unitization, forced-pooling, or otherwise) or until a non-standard unit, eliminating such interests, has been approved by the Commission.



CERTIFICATION

I hereby certify that the information contained herein is true and complete to the best of my knowledge and belief.

Gliserio Rodriguez
 Name
GLISERIO RODRIGUEZ
 Position
REG. AGT.
 Company
YATES PETROLEUM CORP.
 Date
2-27-84

I hereby certify that the well location shown on this plat was plotted from field notes of actual surveys made by me or under my supervision, and that the same is true and correct to the best of my knowledge and belief.

Date Surveyed **2/16/84**
 Registered Professional Engineer and Land Surveyor
3640
 Certificate No. **REG. LAND SURVEYOR**

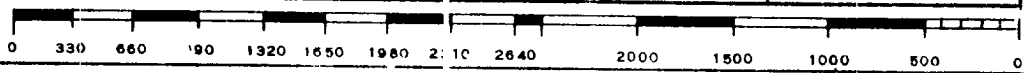
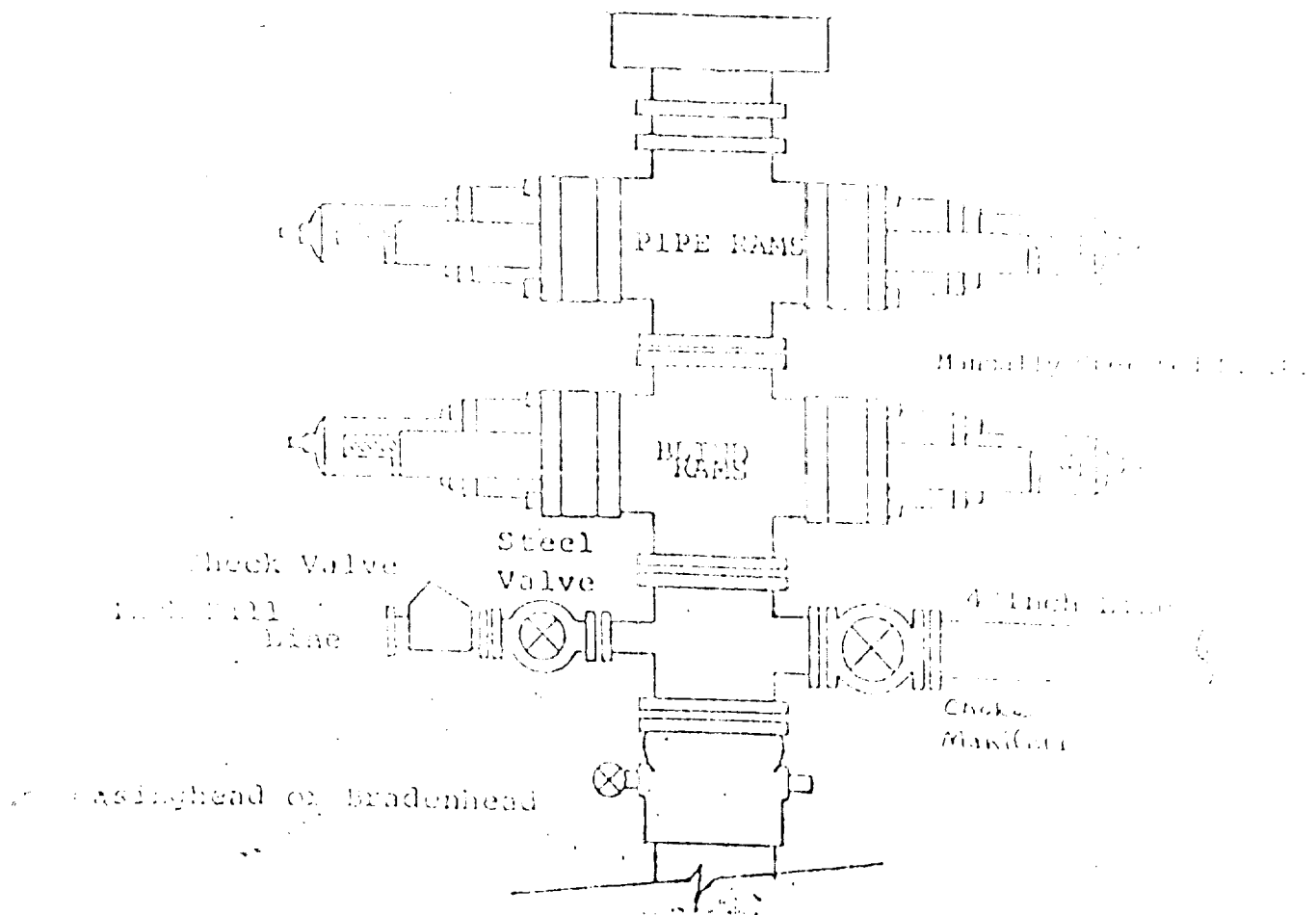


EXHIBIT B

BDP DIAGRAM

RATED 3000[#]



YATES PETROLEUM CORPORATION
Kidd "ZF" Federal #1
1980' FNL and 660' FWL
Sec. 26-T1N-R26E

In conjunction with Form 9-331C, Application for Permit to Drill subject well, Yates Petroleum Corporation submits the following ten items of pertinent information in accordance with BLM requirements.

1. The geologic surface formation is sandy alluvium.
2. The estimated tops of geologic markers are as follows:

San Andres	1350'
Glorieta	1760'
Yeso	1900'
Abo	2500'
Penn	4496'
Mississippian	5112'
Pre-Cambrian	5650'
TD	5800'
3. The estimated depths at which anticipated water, oil or gas formations are expected to be encountered:

Water: 150-200'

Oil or Gas: 5000'
4. Proposed Casing Program: See Form 9-331C.
5. Pressure Control Equipment: See Form 9-331C.
6. Mud Program: See Form 9-331C.
7. Auxiliary Equipment: Kelly Cock; pit level indicators and flow sensor equipment; sub with full-opening valve on floor, drill pipe connection.
8. Testing, Logging and Coring Program:

Samples: Surface casing to TD.

DST's: As warranted.

Coring: None.

Logging: CNL-FDC TD to csg w/GR-CNL to surface, DLL from TD to csg.
9. No abnormal pressures or temperatures are anticipated.
10. Anticipated starting date: As soon as possible after approval.

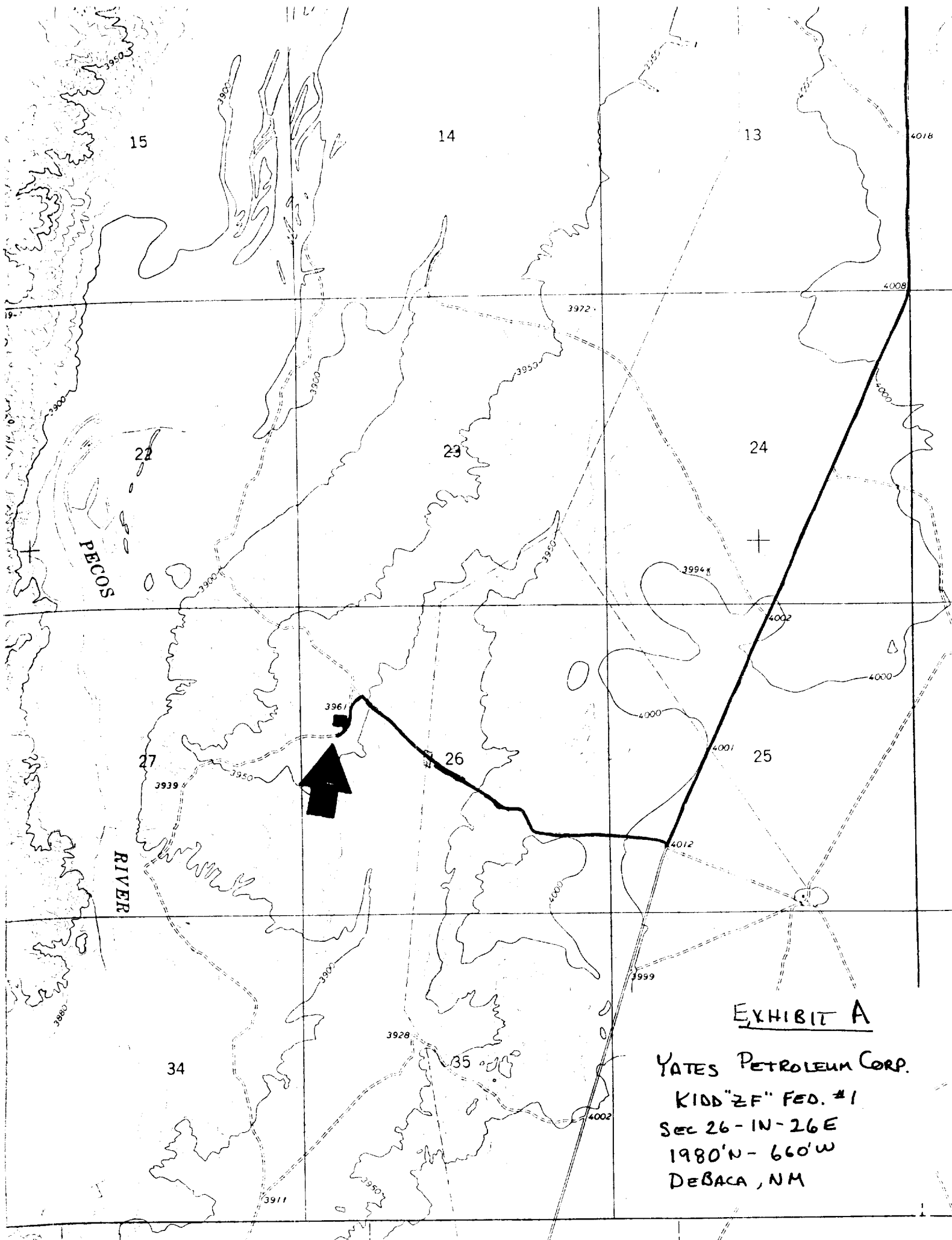


EXHIBIT A

YATES PETROLEUM CORP.
KID "ZF" FED. #1
Sec 26-1N-26E
1980'N - 660'W
DEBACA, NM

YATES PETROLEUM CORP.

Exhibit C

Five PIT
 to be at
 level to
 pit.

