

DEC 28 1981

O. C. D.
ARTES A. OFFICE

30-011-20030
Form C-101
Revised 10-1-78

| | |
|------------------------|---|
| NO. OF COPIES RECEIVED | |
| DISTRIBUTION | |
| SANTA FE | 1 |
| FILE | 1 |
| U.S.G.S. | 2 |
| LAND OFFICE | |
| OPERATOR | |

| |
|--|
| 1A. Indicate Type of Lease |
| STATE <input type="checkbox"/> FEE <input checked="" type="checkbox"/> |
| 1B. State Oil & Gas Lease No. |
| 7. Unit Agreement Name |
| 8. Farm or Lease Name |
| Cook 20 |
| 9. Well No. |
| 1 |
| 10. Field and Pool, or Wildcat |
| Wildcat Abo |
| 11. County |
| DeBaca |

APPLICATION FOR PERMIT TO DRILL, DEEPEN, OR PLUG BACK

Type of Work

Type of Well

DRILL ☒ DEEPEN ☐ PLUG BACK ☐

OIL WELL ☐ GAS WELL ☒ OTHER ☐

SINGLE ZONE ☒ MULTIPLE ZONE ☐

Name of Operator

Energy Resources Oil & Gas Corporation

Address of Operator

Two Energy Square, 4849 Greenville Ave., Suite 700, Dallas, TX 75206

Location of Well

UNIT LETTER F LOCATED 1980 FEET FROM THE North LINE

1980 FEET FROM THE West LINE OF SEC. 20 TWP. 2S RGE. 23E NMPM

18. Proposed Depth

5500'

19a. Formation

Abo

20. Rotary or C.T.

Rotary

21A. Kind & Status Plug. Bond

Effective Blanket - St. Wide

21B. Drilling Contractor

Pace Drilling Co.

22. Approx. Date Work will start

Feb. 15, 1982

PROPOSED CASING AND CEMENT PROGRAM

| SIZE OF HOLE | SIZE OF CASING | WEIGHT PER FOOT | SETTING DEPTH | SACKS OF CEMENT | EST. TOP |
|--------------|----------------|-----------------|---------------|-----------------|------------|
| 17-1/2" | 13-3/8" | 54.5 | 400'+ | 200 sx C1 "C" | Circulated |
| 12-1/4" | 8-5/8" | 24 | 1500'+ | 765 sx C1 "C" | Circulated |
| 7-7/8" | 4-1/2" | 10.5 | 5500'+ | 600 sx C1 "H" | - |

B.O.P. - Exhibit "C" attached.

The well will spud with 17-1/2" bit and drill to 400'+. Surface casing will be run and cement circulated to surface.

B.O.P. will be installed on the 13-3/8" and tested to 1000#. A 12-1/4" hole will be drilled to 1500'+. Casing will be run and cement circulated or grouted.

B.O.P. will be installed on the 8-5/8" and tested to 1000#. The shoe will be tested to equivalent of 10# mud (100# psi above 8.8-9.0# mud).

APPROVAL FOR 180 DAYS
PERMIT EXPIRES 7-7-82
UNLESS DRILLING UNDERWAY

ABOVE SPACE DESCRIBE PROPOSED PROGRAM; IF PROPOSAL IS TO DEEPEN OR PLUG BACK, GIVE DATA ON PRESENT PRODUCTIVE ZONE AND PROPOSED NEW PRODUCTIVE ZONE. GIVE BLOWOUT PREVENTER PROGRAM, IF ANY.

I hereby certify that the information above is true and complete to the best of my knowledge and belief.

Signed Robert D. Beebe Title Operations Manager Date 12-21-81

(This space for State Use)

PROVED BY Mike Williams TITLE State Oil & Gas Inspector DATE JAN 4 1982

CONDITIONS OF APPROVAL, IF ANY:

NEW MEXICO OIL CONSERVATION COMMISSION
WELL LOCATION AND ACREAGE DEDICATION PLAT

Form C-102
Supersedes C-128
Effective 1-1-65

All distances must be from the outer boundaries of the Section.

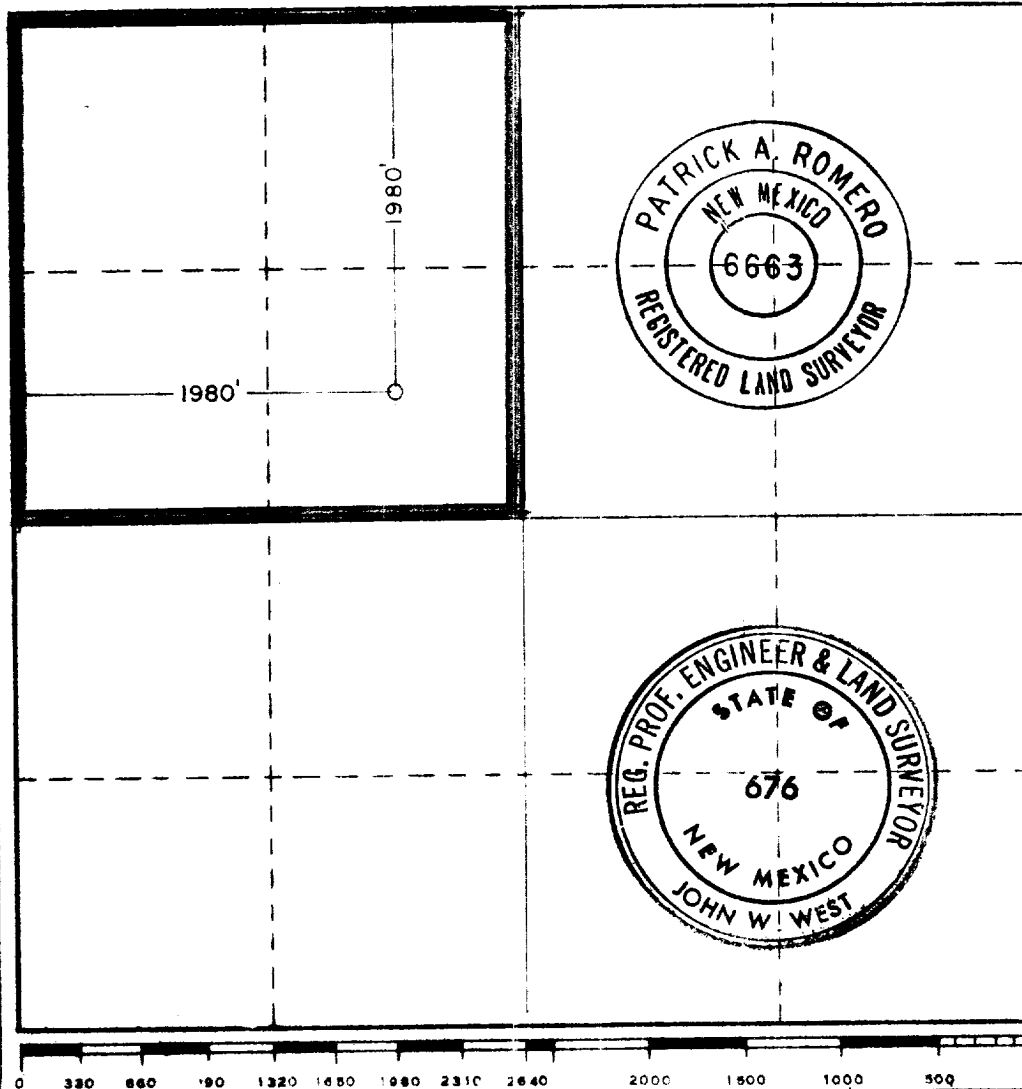
| | | | | | |
|--|-----------------------------------|----------------------------|-------------------------|--|--|
| Operator Energy Resources Oil & Gas Corp. | | Lease Cook 20 | | Well No. 1 | |
| Unit Letter F | Section 20 | Township 2 South | Range 23 East | County De Baca | |
| Actual Footage Location of Well: 1980 feet from the North line and 1980 feet from the West line | | | | | |
| Ground Level Elev. | Producing Formation Abo | | Pool Wildcat | Dedicated Acreage: 160 Acres | |

1. Outline the acreage dedicated to the subject well by colored pencil or hatchure marks on the plat below.
2. If more than one lease is dedicated to the well, outline each and identify the ownership thereof (both as to working interest and royalty).
3. If more than one lease of different ownership is dedicated to the well, have the interests of all owners been consolidated by communitization, unitization, force-pooling, etc?

☐ Yes ☒ No If answer is "yes," type of consolidation _____

If answer is "no," list the owners and tract descriptions which have actually been consolidated. (Use reverse side of this form if necessary.) _____

No allowable will be assigned to the well until all interests have been consolidated (by communitization, unitization, forced-pooling, or otherwise) or until a non-standard unit, eliminating such interests, has been approved by the Commission.



CERTIFICATION

I hereby certify that the information contained herein is true and complete to the best of my knowledge and belief.

Robert D. Bocell

Name

Robert D. Bocell

Position

Operations Manager

Company

Energy Resources Oil & Gas Corp.

Date

12-21-81

I hereby certify that the well location shown on this plat was plotted from field notes of actual surveys made by me or under my supervision, and that the same is true and correct to the best of my knowledge and belief.

Date Surveyed

Dec. 17, 1981

Registered Professional Engineer and/or Land Surveyor

Patrick A. Romero

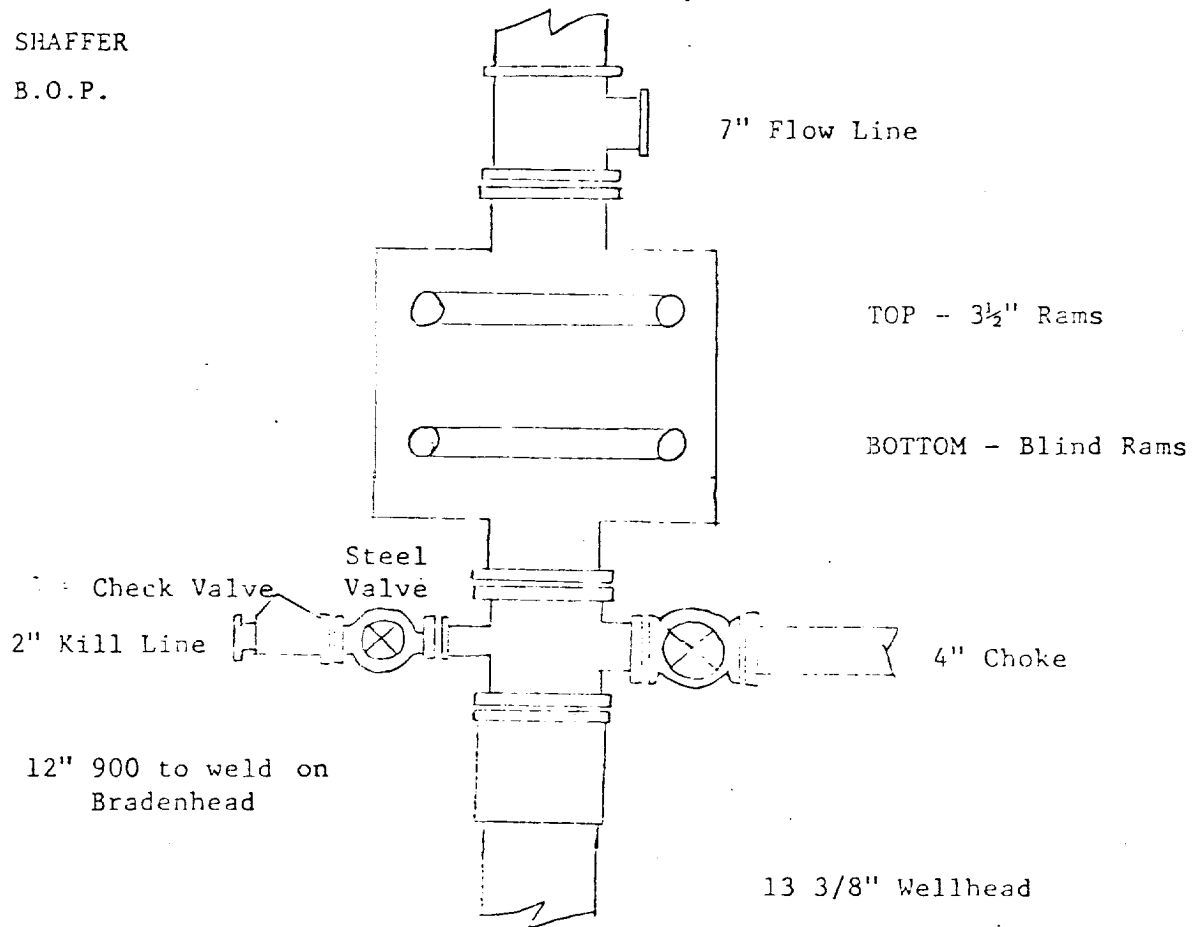
Certificate No. **JOHN W. WEST 676**
PATRICK A. ROMERO 6663
Ronald J. Eldson 3239

Energy Resources Oil & Gas
#1 Cook 20, Sec. 20, T2S, R23E
DeBaca County, New Mexico

Exhibit "C"

TYPE 39 SHAFFER

12" 900 B.O.P.



2" Standard Ball plug

2" Standard 2/2000# Ball Valve