

All distances must be from the outer boundaries of the Section.

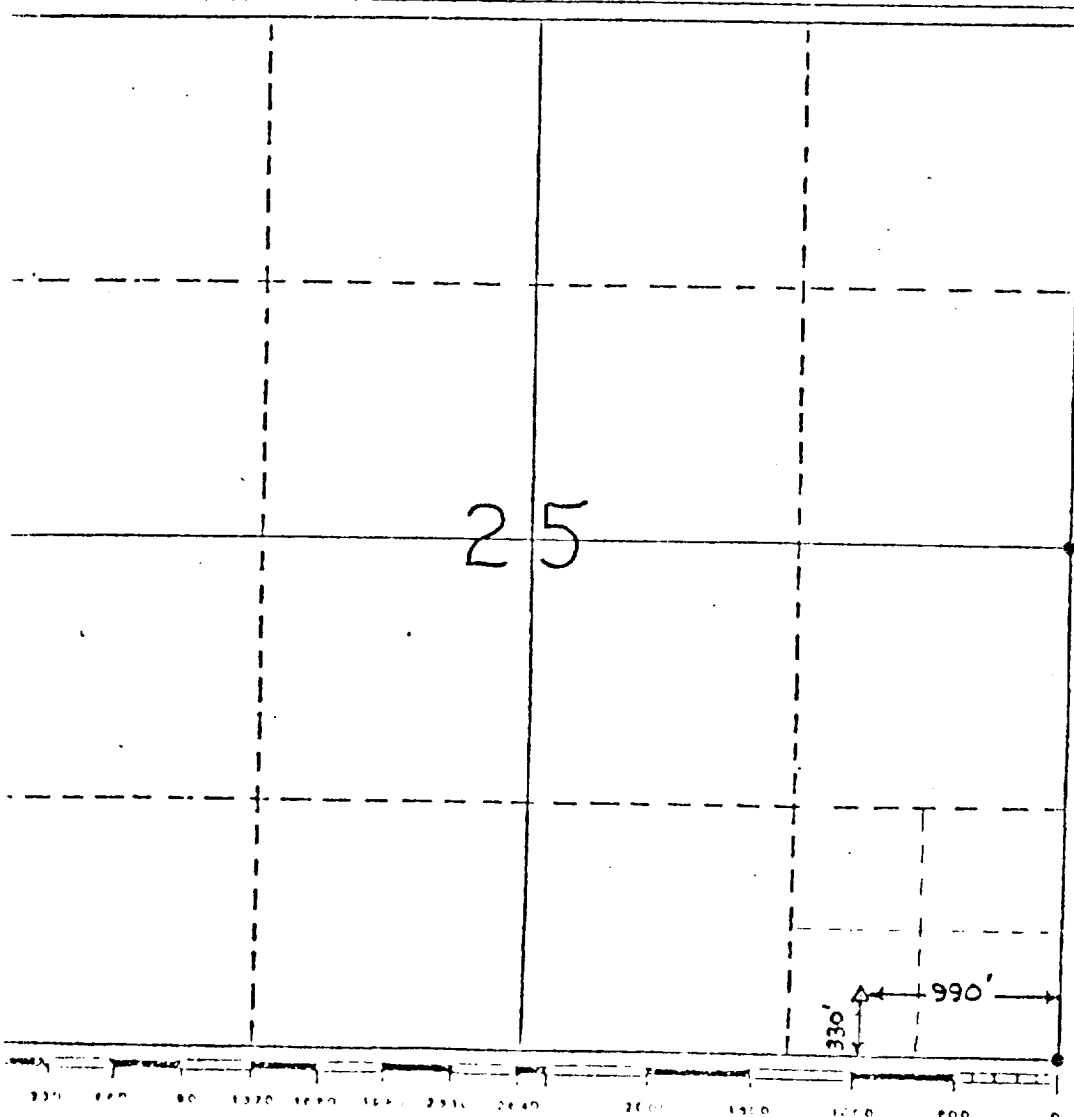
Operator Arthur B. Ramsey.			Lease Ramsey 25 State Unit			Well No. #1		
Unit Letter P	Section 25	Township 27S	Range 17W	County Hidalgo				
Actual Footage Location of Well:								
330 feet from the South line and		990 feet from the East line						
Ground Level Elev. 4513'GL	Producing Formation Mojado		Pool Wildcat Mojado			Dedicated Acreage: 40 Acres		

1. Outline the acreage dedicated to the subject well by colored pencil or hatchure marks on the plat below.
2. If more than one lease is dedicated to the well, outline each and identify the ownership thereof (both as to working interest and royalty).
3. If more than one lease of different ownership is dedicated to the well, have the interests of all owners been consolidated by communitization, unitization, force-pooling, etc?

☒ Yes ☐ No If answer is "yes," type of consolidation Unitization R-8873
Playas Valley Unit

If answer is "no," list the owners and tract descriptions which have actually been consolidated. (Use reverse side of this form if necessary.)

No allowable will be assigned to the well until all interests have been consolidated (by communitization, unitization, forced-pooling, or otherwise) or until a non-standard unit, eliminating such interests, has been approved by the Division.



CERTIFICATION	
I hereby certify that the information contained herein is true and complete to the best of my knowledge and belief.	
Name	Arthur B Ramsey
Position	Owner
Company	Ramsey Pet. Co.
Date	4-25-89
I hereby certify that the well location shown on this plat was plotted from field notes of actual surveys made by me or under my supervision, and that the same is true and correct to the best of my knowledge and belief.	
Date Surveyed	APRIL 22, 1989
Registered Professional Engineer and/or Land Surveyor	
<i>Karl D. King</i>	
Certificate No.	NEW MEXICO 7250