

NO. OF COPIES RECEIVED	4
DISTRIBUTION	
SANTA FE	1
FILE	1
U.S.G.S.	2
LAND OFFICE	1
OPERATOR	1

RECEIVED

NEW MEXICO OIL CONSERVATION COMMISSION
NOV 7 1979

D.O.C.
ARTESIA

30-027-20006

Form C-101
Revised 1-1-65

5A. Indicate Type of Lease
STATE <input checked="" type="checkbox"/> FEE <input type="checkbox"/>
5. State Oil & Gas Lease No.
LG 6862

APPLICATION FOR PERMIT TO DRILL, DEEPEN, OR PLUG BACK

1a. Type of Work		7. Unit Agreement Name	
b. Type of Well OIL WELL <input checked="" type="checkbox"/> GAS WELL <input checked="" type="checkbox"/> OTHER <input type="checkbox"/> DRILL <input checked="" type="checkbox"/> DEEPEN <input type="checkbox"/> PLUG BACK <input type="checkbox"/>		8. Farm or Lease Name White Flat "LO" State	
2. Name of Operator Yates Petroleum Corporation		9. Well No. 1	
3. Address of Operator 207 South 4th Street, Artesia, New Mexico 88210		10. Field and Pool, or Wildcat Wildcat	
4. Location of Well UNIT LETTER D LOCATED 660 FEET FROM THE North LINE AND 660 FEET FROM THE West LINE OF SEC. 36 TWP. 7S RGE. 20E NMPM		12. County Lincoln	
19. Proposed Depth 3200		19A. Formation Granite	
20. Rotary or C.T. Rotary		21. Elevations (Show whether DF, RT, etc.) 4375' GR	
21A. Kind & Status Plug. Bond Blanket		21B. Drilling Contractor L & M Drilling Co.	
22. Approx. Date Work will start As soon as approved			

23.

PROPOSED CASING AND CEMENT PROGRAM

SIZE OF HOLE	SIZE OF CASING	WEIGHT PER FOOT	SETTING DEPTH	SACKS OF CEMENT	EST. TOP
16"	13 3/8"		40'		Circulated
12 3/4"	9 5/8"	24#	800'	600	Circulate
8 3/4"	5 1/2"	15.5#	TD		

We propose to drill and test the Granite and intermediate formations. One joint of conductor pipe will be set and cemented. Approximately 800' of 9 5/8" casing will be set and cemented. If commercial, 5 1/2" casing will be run and cemented with adequate cover; perforate and stimulate as needed for production. Also, if necessary, will run 7" intermediate casing and 4 1/2" production liner.

MUD PROGRAM: Fresh water Gel to 800'; fresh water to 2100'; and Brine, Drispak & Starch to TD.

BOP PROGRAM: BOP's will be installed on 9 5/8" casing and tested daily.

GAS NOT DEDICATED.

APPROVAL VALID
FOR 90 DAYS UNLESS
DRILLING COMMENCED,

EXPIRES 2-7-80

IN ABOVE SPACE DESCRIBE PROPOSED PROGRAM: IF PROPOSAL IS TO DEEPEN OR PLUG BACK, GIVE DATA ON PRESENT PRODUCTIVE ZONE AND PROPOSED NEW PRODUCTIVE ZONE. GIVE BLOWOUT PREVENTER PROGRAM, IF ANY.

I hereby certify that the information above is true and complete to the best of my knowledge and belief.

Signed Glenn Rodriguez Title Geographer Date 11/6/79

(This space for State Use)

APPROVED BY W.A. Gussert TITLE SUPERVISOR, DISTRICT II DATE NOV 9 1979

CONDITIONS OF APPROVAL, IF ANY:

Cement must be circulated to
surface behind 13 3/8" casing

N MEXICO OIL CONSERVATION COMMISSION
WELL LOCATION AND ACREAGE DEDICATION PLAT

Form C-102
Supersedes C-128
Effective 1-1-65

All distances must be from the outer boundaries of the Section.

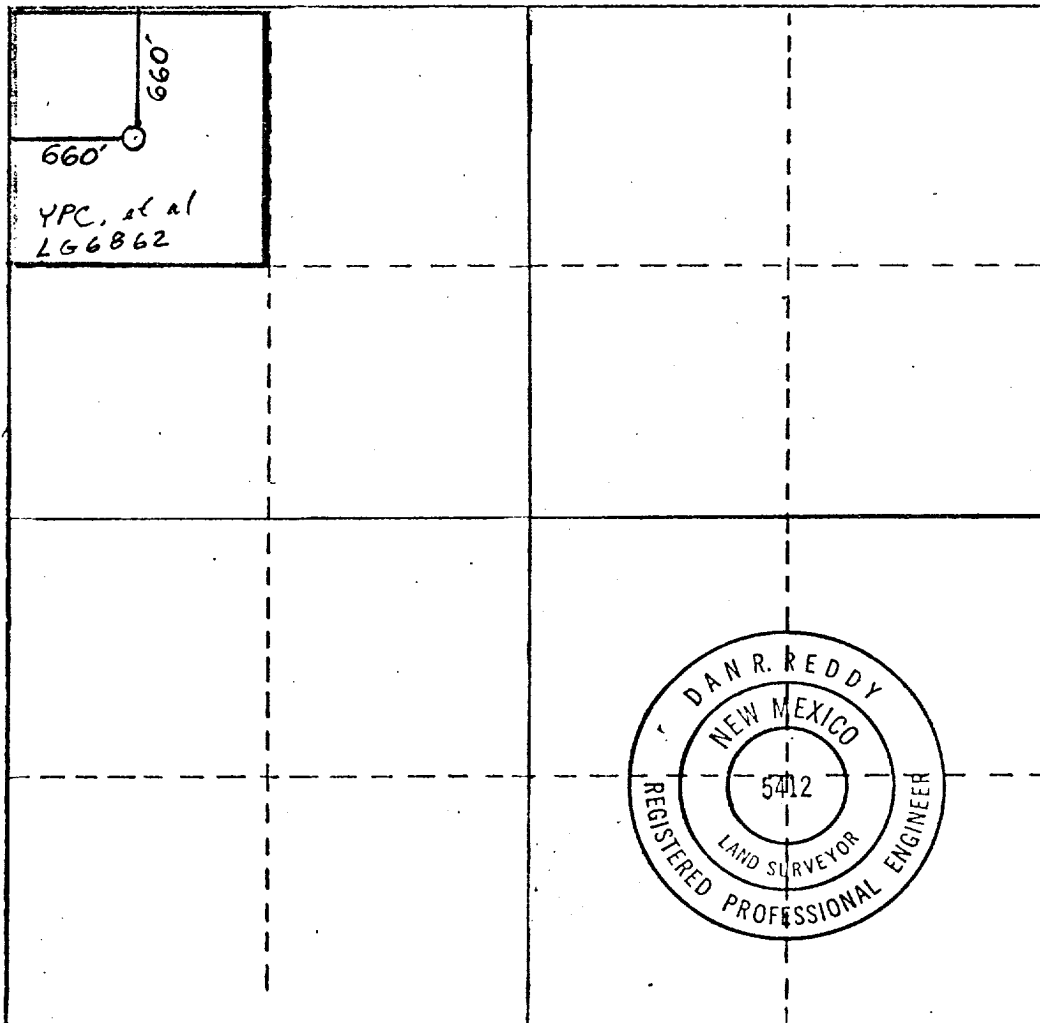
Operator YATES PETROLEUM CORPORATION			Lease White Flat LO State		Well No. 1
Unit Letter D	Section 36	Township 7 South	Range 20 East	County Lincoln	
Actual Footage Location of Well: 660 feet from the North line and 660 feet from the West line					
Ground Level Elev. 4375'	Producing Formation GRANITE		Pool WILDCAT		Dedicated Acreage: 40 Acres

1. Outline the acreage dedicated to the subject well by colored pencil or hatchure marks on the plat below.
2. If more than one lease is dedicated to the well, outline each and identify the ownership thereof (both as to working interest and royalty).
3. If more than one lease of different ownership is dedicated to the well, have the interests of all owners been consolidated by communitization, unitization, force-pooling, etc?

☐ Yes ☐ No If answer is "yes," type of consolidation: _____

If answer is "no," list the owners and tract descriptions which have actually been consolidated. (Use reverse side of this form if necessary.) _____

No allowable will be assigned to the well until all interests have been consolidated (by communitization, unitization, forced-pooling, or otherwise) or until a non-standard unit, eliminating such interests, has been approved by the Commission.



CERTIFICATION

I hereby certify that the information contained herein is true and complete to the best of my knowledge and belief.

Gliserio Rodriguez

Name

GLISERIO RODRIGUEZ

Position

GEOGRAPHER

Company

YATES PETROLEUM CORP.

Date

11-6-79

I hereby certify that the well location shown on this plat was plotted from field notes of actual surveys made by me or under my supervision, and that the same is true and correct to the best of my knowledge and belief.

Date Surveyed

Nov. 5, 1979

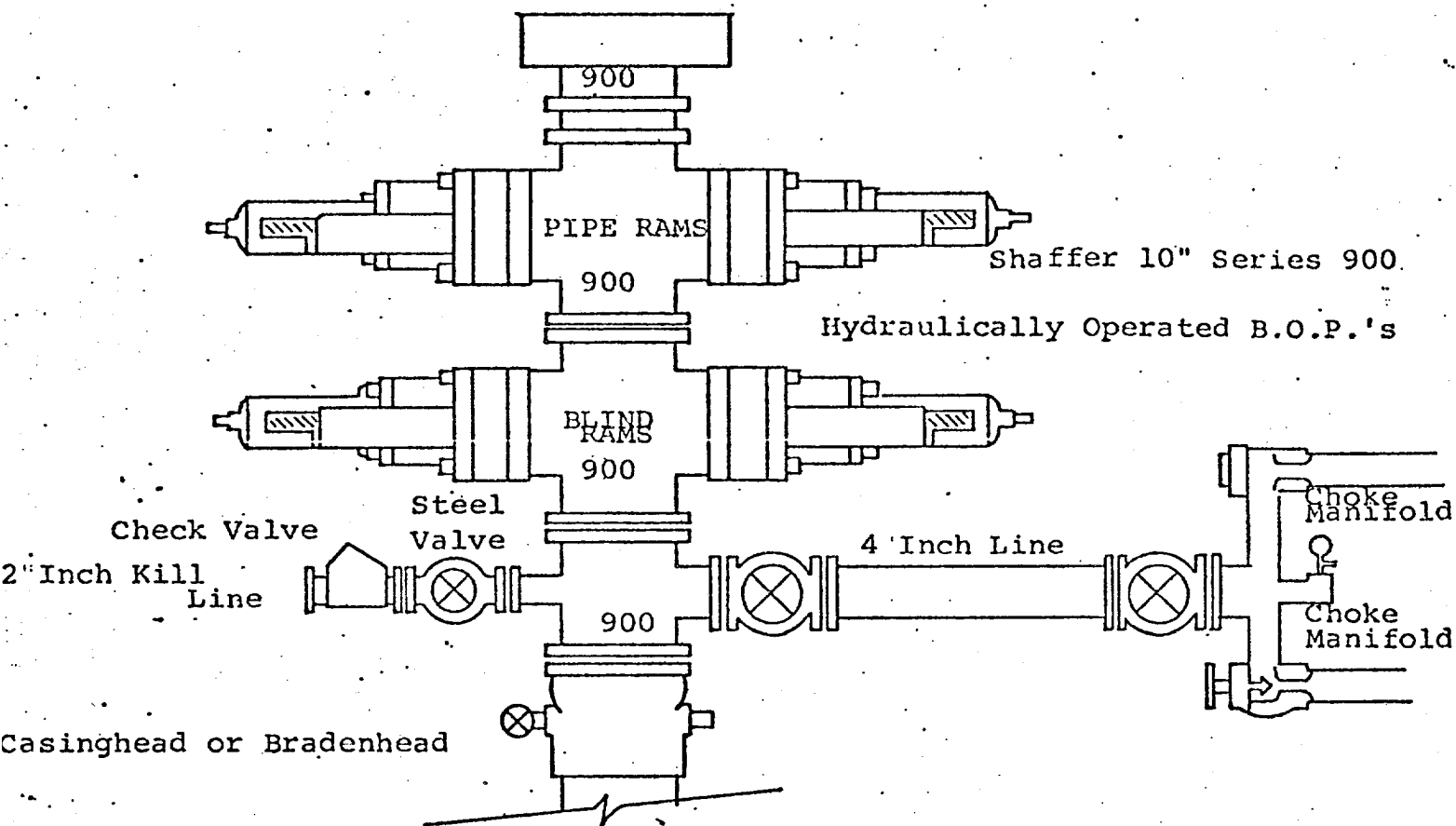
Registered Professional Engineer and/or Land Surveyor

Dan R. Reddy

Certificate No.

NM PE&LS #5412

0 330 660 990 1320 1650 1980 2310 2640 2970 3300 3630 3960 4290 4620 4950 5280 5610 5940 6270 6600



THE FOLLOWING CONSTITUTE MINIMUM BLOWOUT PREVENTER REQUIREMENTS.

1. All preventers to be hydraulically operated with secondary manual controls installed prior to drilling out from under casing.
2. Choke outlet to be a minimum of 4" diameter.
3. Kill line to be of all steel construction of 2" minimum diameter.
4. All connections from operating manifolds to preventers to be all steel, hole or tube a minimum of one inch in diameter.
5. The available closing pressure shall be at least 15% in excess of that required with sufficient volume to operate the B.O.P.'s.
6. All connections to and from preventer to have a pressure rating equivalent to that of the B.O.P.'s.
7. Inside blowout preventer to be available on rig floor.
8. Operating controls located a safe distance from the rig floor.
9. Hole must be kept filled on trips below intermediate casing. Operator not responsible for blowouts resulting from not keeping hole full.
10. D. P. float must be installed and used below zone of first gas intrusion.