

NO. OF COPIES RECEIVED	
DISTRIBUTION	
SANTA FE	
FILE	
U.S.G.S.	
LAND OFFICE	
OPERATOR	

NEW MEXICO OIL CONSERVATION COMMISSION

FEB 25 1981

O. C. D.  
ARTISIA, OFFICE

Form C-101  
Revised 1-1-65

5A. Indicate Type of Lease  
STATE ☒ FEE ☐  
5. State Oil & Gas Lease No.  
NM-LG-7545

APPLICATION FOR PERMIT TO DRILL, DEEPEN, OR PLUG BACK

1a. Type of Work b. Type of Well OIL WELL <input checked="" type="checkbox"/> GAS WELL <input type="checkbox"/> OTHER <input type="checkbox"/> 2. Name of Operator Terra of New Mexico, Inc. ✓ 3. Address of Operator 900 Louisiana NE, #956C, Albuquerque, New Mexico 87110 4. Location of Well UNIT LETTER N LOCATED 2452 FEET FROM THE west LINE AND 650 FEET FROM THE south LINE OF SEC. 25 TWP. 10S RGE. 19E NMPM 19. Proposed Depth 3200' 19A. Formation Permo/Pennsylvania 20. Rotary or C.T. Rotary 21. Elevations (Show whether DF, RT, etc.) 4776 GL 21A. Kind & Status Plug. Bond Blanket Bond 21B. Drilling Contractor Dell Construction 22. Approx. Date Work will start March 15, 1981		7. Unit Agreement Name 8. Farm or Lease Name Riley State 9. Well No. 1 10. Field and Pool, or Wildcat Wildcat 12. County Lincoln	
---------------------------------------------------------------------------------------------------------------------------------------------------------------------------------------------------------------------------------------------------------------------------------------------------------------------------------------------------------------------------------------------------------------------------------------------------------------------------------------------------------------------------------------------------------------------------------------------------------------------------------------------------------------------------------------------------------------------------------------------------------------------------	--	----------------------------------------------------------------------------------------------------------------------------------------------------------	--

23.

PROPOSED CASING AND CEMENT PROGRAM

SIZE OF HOLE	SIZE OF CASING	WEIGHT PER FOOT	SETTING DEPTH	SACKS OF CEMENT	EST. TOP
13 3/8"	10 3/4	40.50#	400'	350sks.	To circulate
7 7/8"	5 1/2	14.0#	3200'	800 sks 50/50 Poz, 1.4 yield @ 13.6 wgt.	both to surface

APPROVAL VALID FOR 180 DAYS  
PERMIT EXPIRES 10-76-81  
UNLESS DRILLING UNDERWAY

NSL-1346  
4-9-81

A Series "900" Hydric blowout preventer will be used, hydraulic rams are used to shut-in the well with or without drill pipe in the hole.

IN ABOVE SPACE DESCRIBE PROPOSED PROGRAM: IF PROPOSAL IS TO DEEPEN OR PLUG BACK, GIVE DATA ON PRESENT PRODUCTIVE ZONE AND PROPOSED NEW PRODUCTIVE ZONE. GIVE BLOWOUT PREVENTER PROGRAM, IF ANY.

I hereby certify that the information above is true and complete to the best of my knowledge and belief.

Signed \_\_\_\_\_ Title \_\_\_\_\_ Date 4/22/81

(This space for State Use)

APPROVED BY W.A. Gressett TITLE SUPERVISOR, DISTRICT 2 DATE APR 16 1981

CONDITIONS OF APPROVAL, IF ANY:

Notify N.M.O.C.C. in sufficient time to witness casing the 10 3/4" casing

NEW MEXICO OIL CONSERVATION COMMISSION  
WELL LOCATION AND ACREAGE DEDICATION PLAT

Form C-102  
Supersedes C-128  
Effective 1-1-65

All distances must be from the outer boundaries of the Section.

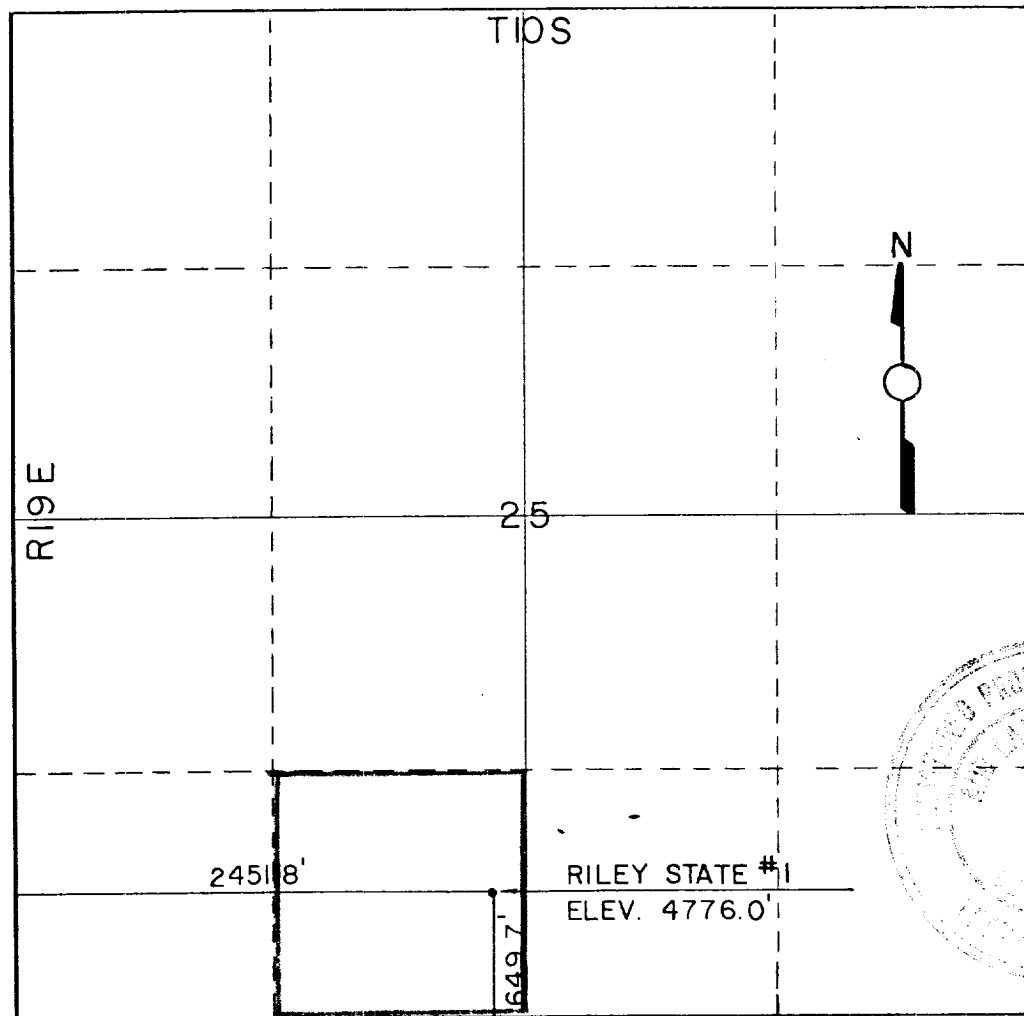
Operator <b>Terra of New Mexico, Inc.</b>			Lease <b>Riley State</b>		Well No. <b>1</b>
Unit Letter <b>N</b>	Section <b>25</b>	Township <b>10-S</b>	Range <b>19-E</b>	County <b>Lincoln</b>	
Actual Footage Location of Well: <b>2451.8</b> feet from the <b>west</b> line and <b>649.7</b> feet from the <b>south</b> line					
Ground Level Elev. <b>4776.0</b>	Producing Formation <b>Permo-Pennsylvania</b>		Pool <b>Wildcat</b>		Dedicated Acreage: <b>40</b> Acres

1. Outline the acreage dedicated to the subject well by colored pencil or hachure marks on the plat below.
2. If more than one lease is dedicated to the well, outline each and identify the ownership thereof (both as to working interest and royalty).
3. If more than one lease of different ownership is dedicated to the well, have the interests of all owners been consolidated by communitization, unitization, force-pooling, etc?

☐ Yes ☐ No If answer is "yes," type of consolidation \_\_\_\_\_

If answer is "no," list the owners and tract descriptions which have actually been consolidated. (Use reverse side of this form if necessary.) \_\_\_\_\_

No allowable will be assigned to the well until all interests have been consolidated (by communitization, unitization, forced-pooling, or otherwise) or until a non-standard unit, eliminating such interests, has been approved by the Commission.



CERTIFICATION

I hereby certify that the information contained herein is true and complete to the best of my knowledge and belief.

*[Signature]*  
Name

**James R. Forbes**

Position

**President**

Company

**Terra of New Mexico, Inc.**

Date

**March 3, 1981**

I hereby certify that the well location shown on this plat was plotted from field notes of actual surveys made by me or under my supervision, and that the same is true and correct to the best of my knowledge and belief.

*[Signature]*  
Date Surveyed  
**1-29-81**

Registered Professional Engineer  
and/or Land Surveyor

**Thomas T. Mann**

Certificate No.

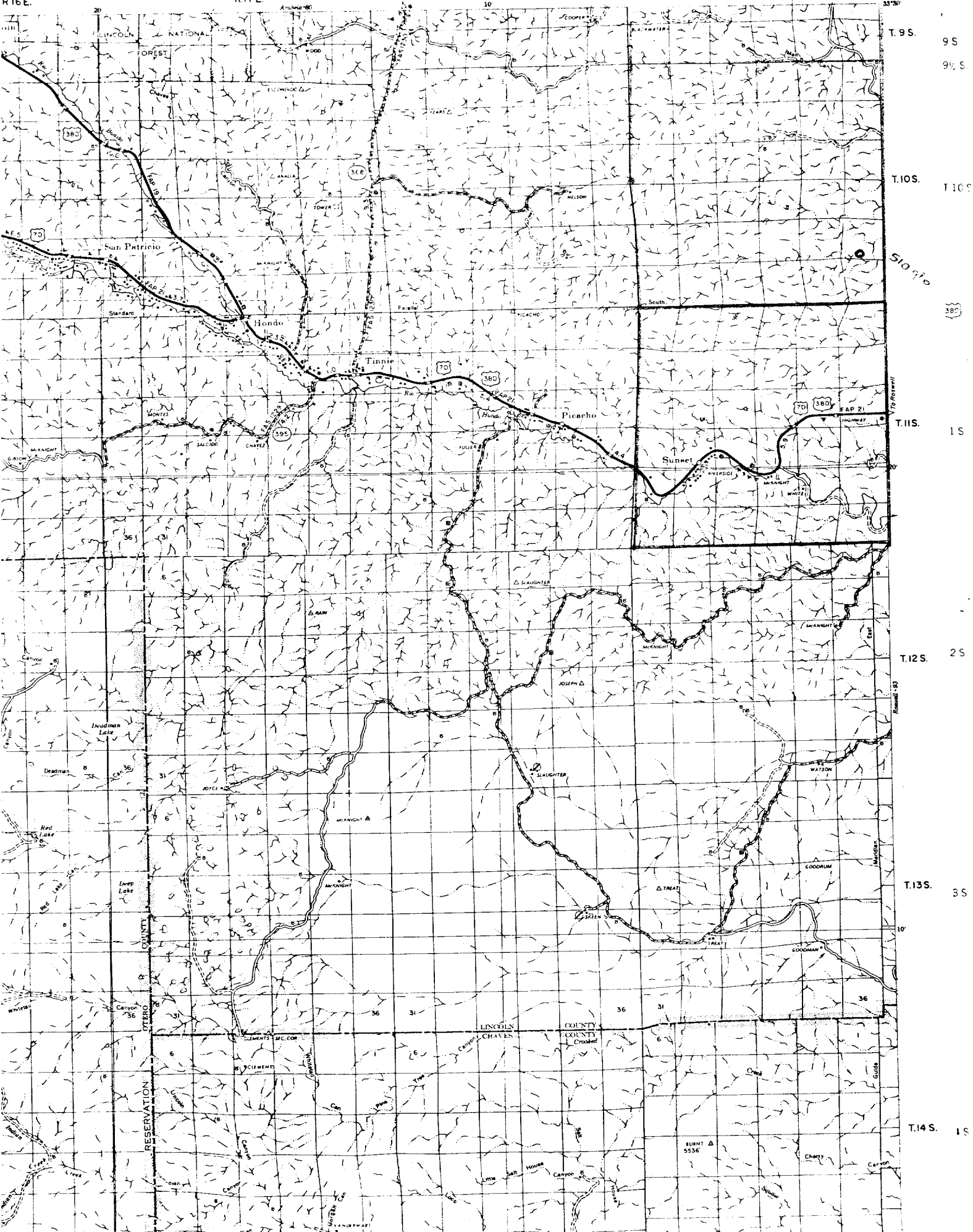
**N.M. License No. 277**

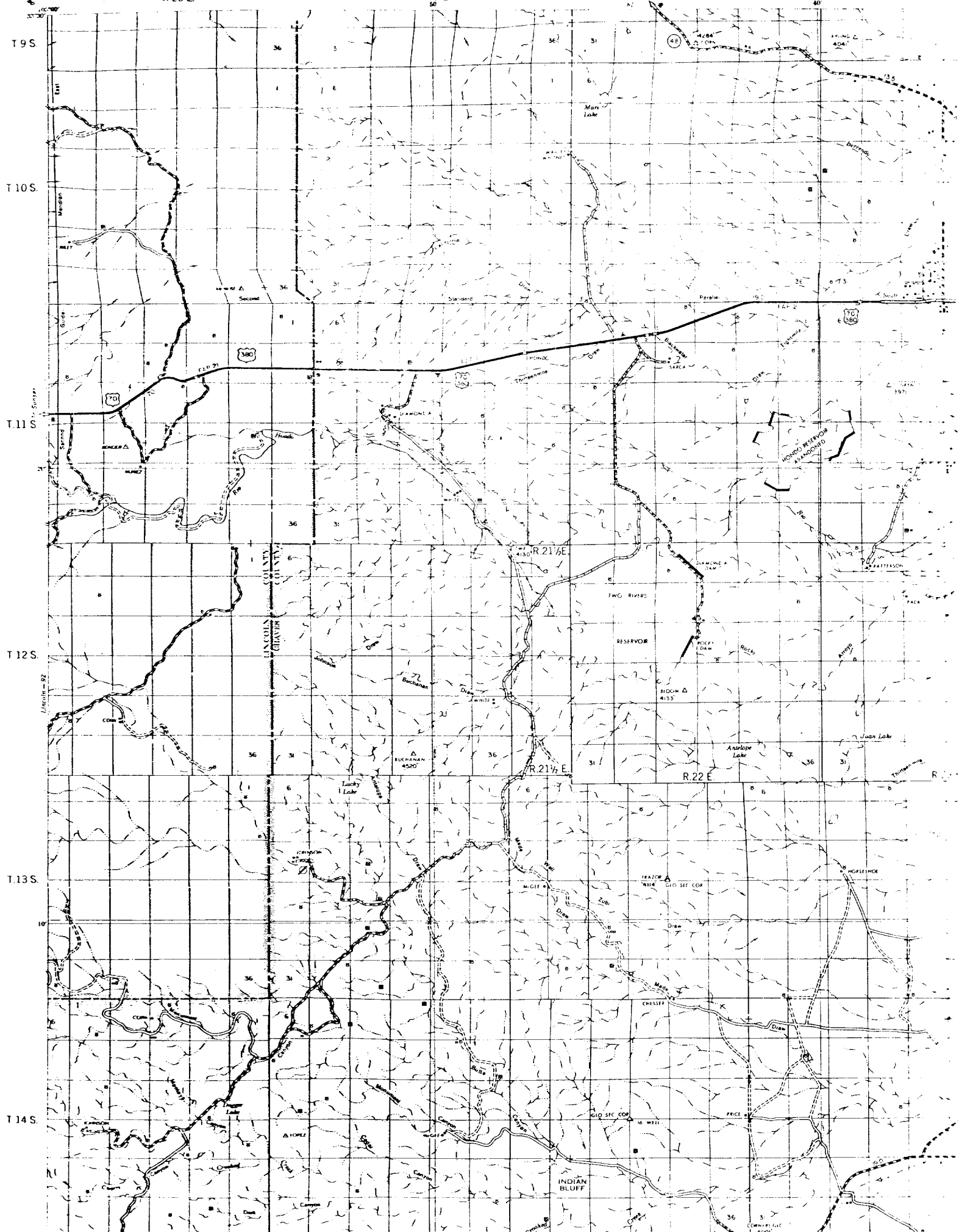
QUADRANGLE-92  
LINCOLN OTERO & CHAVES COUNTIES  
R.19E.

R.16E.

R.17E.

R.18E.







STATE OF NEW MEXICO  
ENERG. AND MINERALS DEPARTMENT  
OIL CONSERVATION DIVISION

April 9, 1981

RECEIVED

POST OFFICE BOX 2088  
STATE LAND OFFICE BUILDING  
SANTA FE, NEW MEXICO 87501  
(505) 827-2434

BRUCE KING  
GOVERNOR

LARRY KEHOE  
SECRETARY

APR 14 1981

O. C. D.  
ARTESIA, OFFICE

Terra of New Mexico, Inc.  
800 E. Girard  
Suite 302  
Denver, Colorado 80231

Attention: Lori Allen

Administrative Order NSL-1346

Gentlemen:

Reference is made to your application for approval of a non-standard location for your Riley State Well No. 1 to be located 650 feet from the South line and 242 feet from the West line of Section 25, Township 10 South, Range 19 East, NMPM, a wildcat well, Lincoln County, New Mexico.

By authority granted me under the provisions of Rule 104 F of the Division Rules and Regulations, the above-described unorthodox location is hereby approved.

Sincerely,

JOE D. RAMEY,  
Director

JDR/RLS/dr

cc: Oil Conservation Division - Artesia  
Oil & Gas Engineering Committee - Hobbs  
U. S. Geological Survey - Artesia

# TERRA

of new mexico, inc.

March 5, 1981

RECEIVED

MAR 09 1981

O. C. D.  
ARTESIA, OFFICE

New Mexico Oil Conservation Division  
P.O. Drawer DD  
Artesia, New Mexico 88210

Attention: Mr. Gressett

Dear Mr. Gressett:

As per your March 3rd conversation with Mr. Michael L. Anderson, enclosed are the corrected C-101 and C-102 for Terra of New Mexico's proposed wells in Lincoln County. It is our understanding that you will hold the forms for the Riley State #1 until we can submit a waiver from the offsetting location lease holder. Terra is in the process of obtaining this waiver and it will be forwarded to you upon our receipt.

We have contacted the bonding company and they have informed us that the statewide bond application has been submitted to their home office and they are awaiting administrative approval. Terra will immediately notify your office of said approval.

Terra of New Mexico, Inc. has arranged for a drilling rig in the very near future. Any assistance you may provide in the timely processing of our applications would be appreciated.

Mr. Anderson wishes to express his thanks for your advise and assistance in the proper filing of the required forms. It was greatly appreciated.

Sincerely,

TERRA OF NEW MEXICO, INC.



Lori Allen  
Vice President of Finance

LA/dsb

Enc.