

Artesia, NM 88210

UNITED STATES

DEPARTMENT OF THE INTERIOR

GEOLOGICAL SURVEY

5. LEASE DESIGNATION AND SERIAL NO.

NM-39765

6. IF INDIAN, ALLOTTEE OR TRIBE NAME

7. UNIT AGREEMENT NAME

8. FARM OR LEASE NAME

Bonita "ZC" Federal

9. WELL NO.

1

10. FIELD AND POOL, OR WILDCAT

Wildcat - *See Lease*11. SEC., T., R., M., OR BLK.
AND SURVEY OR AREA

Sec. 23-T3S-R14E

12. COUNTY OR PARISH

Lincoln

13. STATE

NM

APPLICATION FOR PERMIT TO DRILL, DEEPEN, OR PLUG BACK

1a. TYPE OF WORK

DRILL ☒DEEPEN ☐PLUG BACK ☐

b. TYPE OF WELL

OIL
WELL ☐GAS
WELL ☒

OTHER

2. NAME OF OPERATOR

Yates Petroleum Corporation ✓

3. ADDRESS OF OPERATOR

207 S. 4th, Artesia, New Mexico 88210 ARTESIA, OFFICE

4. LOCATION OF WELL (Report location clearly and in accordance with any state requirements.)

At surface

1980' FSL and 1980' FEL

At proposed prod. zone

same

14. DISTANCE IN MILES AND DIRECTION FROM NEAREST TOWN OR POST OFFICE*

Approximately 21 miles SE of Corona, New Mexico.

15. DISTANCE FROM PROPOSED*

LOCATION TO NEAREST
PROPERTY OR LEASE LINE, FT.
(Also to nearest drlg. unit line, if any)

1980

16. NO. OF ACRES IN LEASE

1840

17. NO. OF ACRES ASSIGNED
TO THIS WELL

160

18. DISTANCE FROM PROPOSED LOCATION*
TO NEAREST WELL, DRILLING, COMPLETED,
OR APPLIED FOR, ON THIS LEASE, FT.

19. PROPOSED DEPTH

2800'

20. ROTARY OR CABLE TOOLS

Rotary

21. ELEVATIONS (Show whether DF, RT, GR, etc.)

6229 GL 5957.6

22. APPROX. DATE WORK WILL START*

ASAP

23.

PROPOSED CASING AND CEMENTING PROGRAM

SIZE OF HOLE	SIZE OF CASING	WEIGHT PER FOOT	SETTING DEPTH	QUANTITY OF CEMENT
17 1/2"	13 3/8"	48# J-55	700'	700 sx circ
7 7/8"	4 1/2"	9.5# J-55	TD	750 sx circ

We propose to drill and test the Pre-Cambrian and intermediate formations. Approximately 700' of surface casing will be set and cement circulated to shut off gravel and caving. If needed (lost circulation) 9 5/8" intermediate casing will be run to 2000' and cemented with enough cement calculated to tie back into the surface casing. If commercial, production casing will be run and cemented with adequate cover, perforate and stimulate as needed for production.

MUD PROGRAM: FW gel/LCM to 700', Brine to 2800'.

BOP PROGRAM: BOP's will be installed at the offset and tested daily.

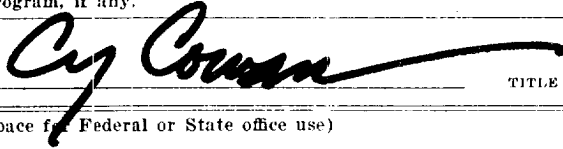
GAS NOT DEDICATED.

*Rest. on HZ
280-12-16 Bk.
3-23-84*

IN ABOVE SPACE DESCRIBE PROPOSED PROGRAM: If proposal is to deepen or plug back, give data on present productive zone and proposed new productive zone. If proposal is to drill or deepen directionally, give pertinent data on subsurface locations and measured and true vertical depths. Give blowout preventer program, if any.

24.

SIGNED



TITLE Regulatory Agent

DATE 2/27/84

(This space for Federal or State office use)

PERMIT NO.

APPROVAL DATE

Orig. Sgd. Earl R. Cunningham

TITLE

District Manager

DATE

MAR 14 1984

APPROVED BY
CONDITIONS OF APPROVAL, IF ANY:

APPROVAL SUBJECT TO
GENERAL REQUIREMENTS AND
SPECIAL STIPULATIONS
ATTACHED

All distances must be from the outer boundaries of the Section.

Operator Yates Petroleum Corporation			Lease Bonita Z C		Well No. Fed. #1
Init Letter J	Section 23	Township 3 South	Range 14 East	County Lincoln	
Actual Postage Location of Well:					
1980 feet from the south line and		1980 feet from the east line			
Ground Level Elev. 5957.6	Producing Formation The Cambrian	Pool Wildcat	Dedicated Acreage: 160 Acres		

1. Outline the acreage dedicated to the subject well by colored pencil or hachure marks on the plat below.
2. If more than one lease is dedicated to the well, outline each and identify the ownership thereof (both as to working interest and royalty).
3. If more than one lease of different ownership is dedicated to the well, have the interests of all owners been consolidated by communization, unitization, force-pooling, etc?

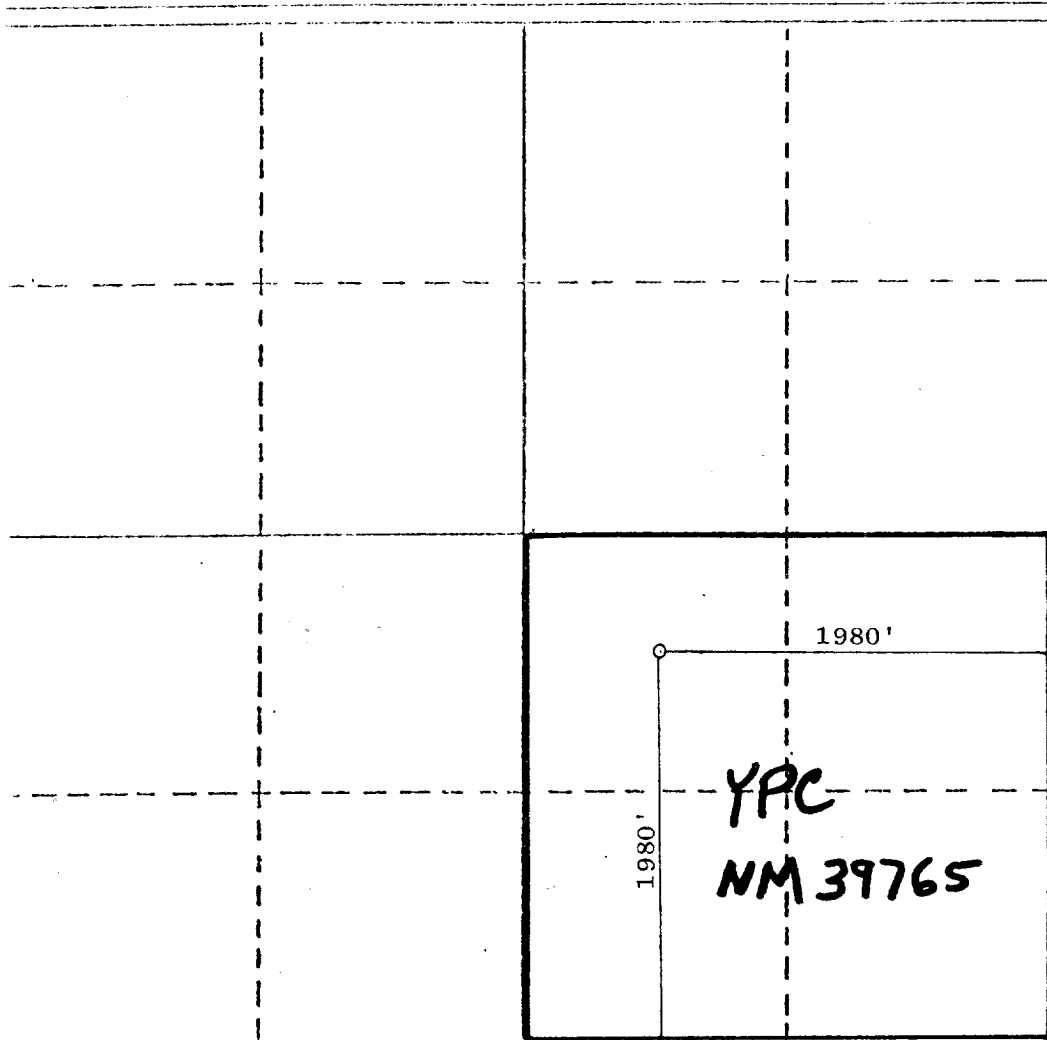
☒ Yes ☒ No

If answer is "yes," type of consolidation

To BE Communized

If answer is "no," list the owners and tract descriptions which have actually been consolidated. (Use reverse side of this form if necessary.)

No allowable will be assigned to the well until all interests have been consolidated (by communization, unitization, forced-pooling, or otherwise) or until a non-standard unit, eliminating such interests, has been approved by the Division.



CERTIFICATION

I hereby certify that the information contained herein is true and complete to the best of my knowledge and belief.

Cy Bowman

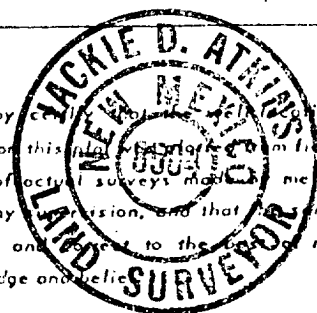
Name

Position

Company

Date

I hereby certify that the information shown on this plat is true and complete to the best of my knowledge and belief, and that the same is true and correct to the best of my knowledge and belief.



February 7, 1984

Date Surveyed

Jackie D. Atkins
Registered Professional Engineer
and/or Land Surveyor

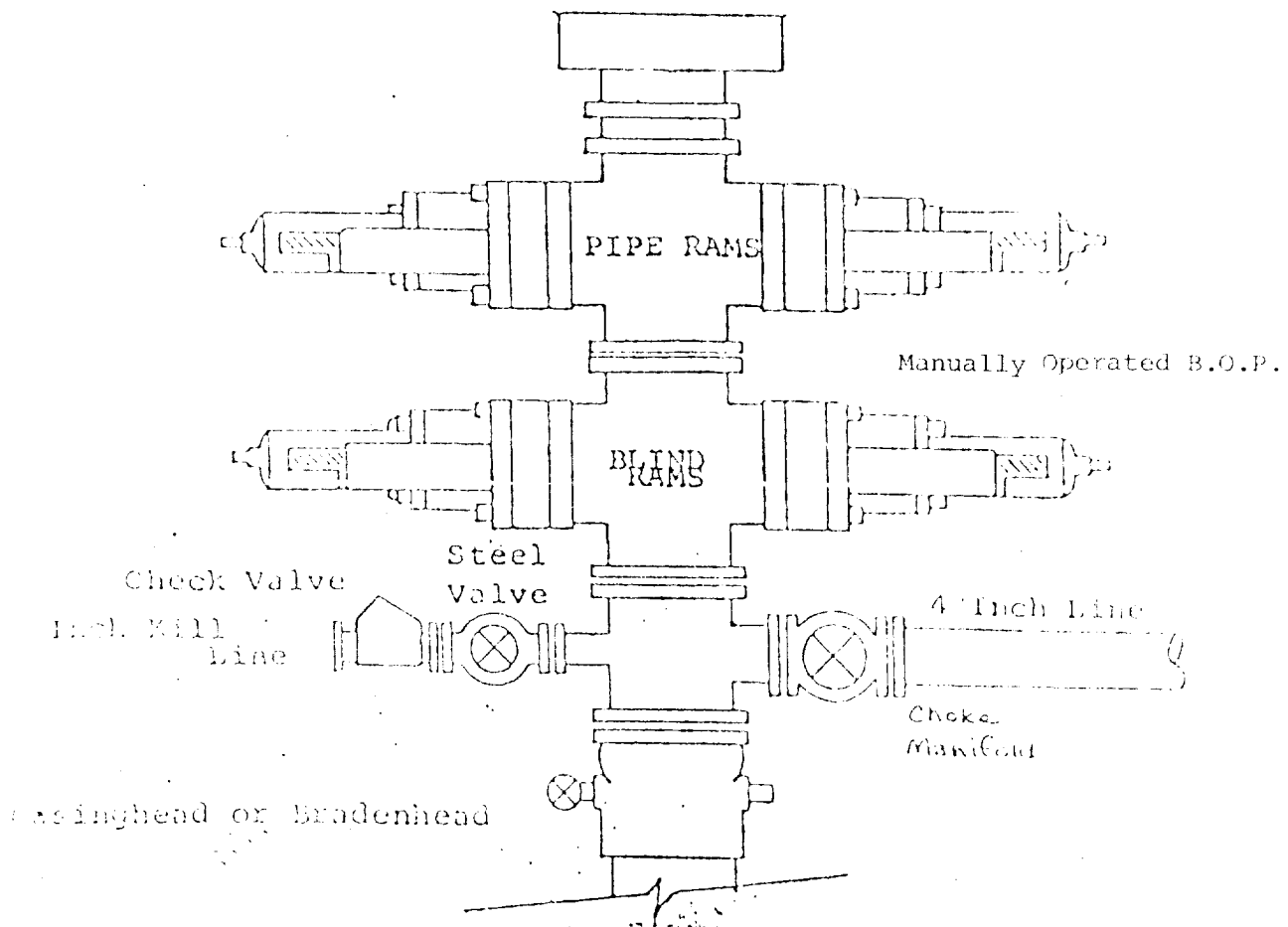
PE 6403 LS 8504

Certificate No.

EXHIBIT B

BOP DIAGRAM

RATED 3000[#]



YATES PETROLEUM CORPORATION
Bonita "ZC" Federal #1
1980' FSL and 1980' FEL
Sec. 23-T3S-R14E

In conjunction with Form 9-331C, Application for Permit to Drill subject well, Yates Petroleum Corporation submits the following ten items of pertinent information in accordance with BIM requirements.

1. The geologic surface formation is sandy alluvium.
2. The estimated tops of geologic markers are as follows:

San Andres	surface
Glorieta	50'
Yeso	250'
Tubb	1450'
Abo	1825'
Pre-Cambrian	2600'
TD	2800'

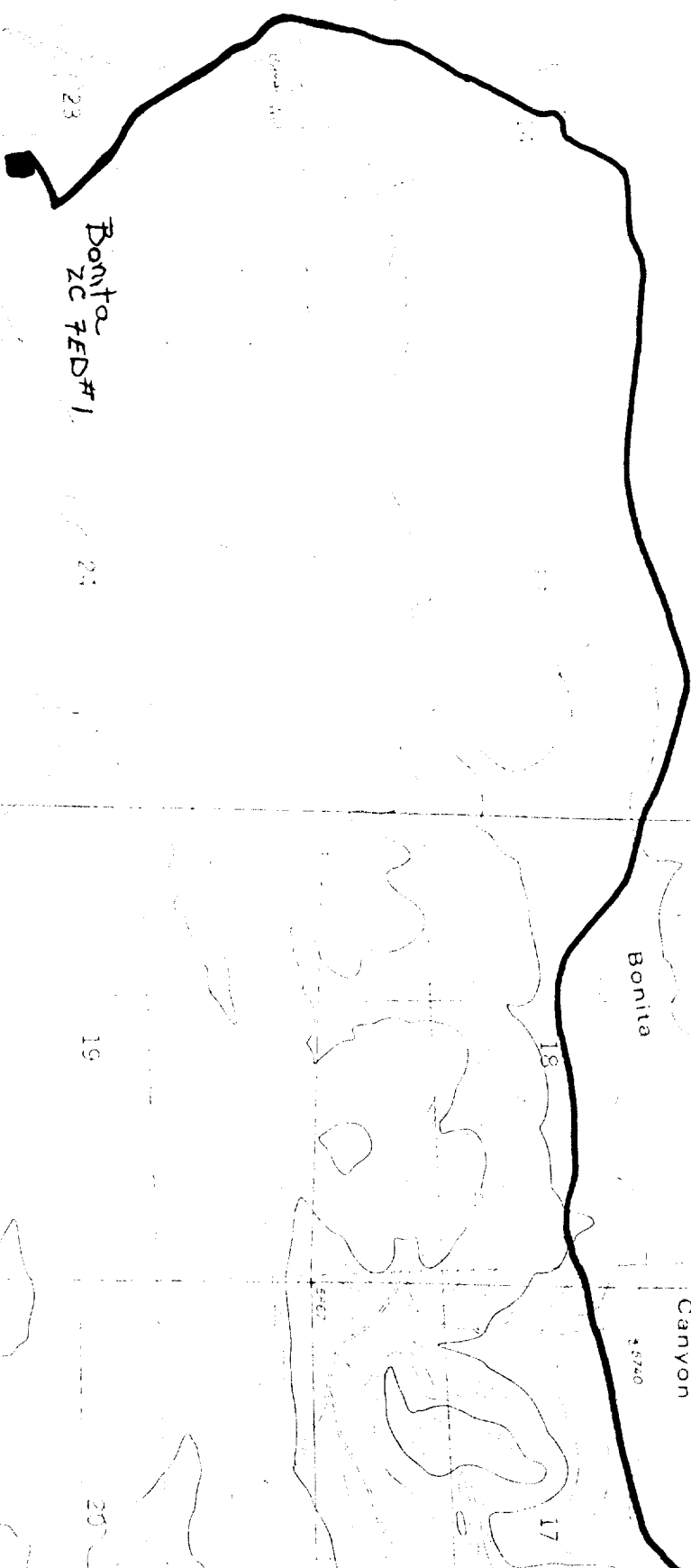
3. The estimated depths at which anticipated water, oil or gas formations are expected to be encountered:

Water: 400-600'

Oil or Gas: Abo 1875'

4. Proposed Casing Program: See Form 9-331C.
5. Pressure Control Equipment: See Form 9-331C.
6. Mud Program: See Form 9-331C.
7. Auxiliary Equipment: Kelly Cock; pit level indicators and flow sensor equipment; sub with full-opening valve on floor, drill pipe connection.
8. Testing, Logging and Coring Program:

Samples:	Surface casing to TD.
DST's:	As warranted.
Coring:	None.
Logging:	CNL-FDC TD to csg w/GR-CNL to surface DLL from TD to csg.
9. No abnormal pressures or temperatures are anticipated.
10. Anticipated starting date: As soon as possible after approval.



Bonita
ZC 7ED #1

Bonita

Canyon

Yates Petroleum Corp
Bonita ZC 7ED #1
1980 FSL + 1980 FEL
Sec 23 T35 R14E
Lincoln County
N.M.
Exhibit A

YATES PETROLEUM CORP.

Exhibit C

reserve pit
bottom to be at
ground level to
pit.

