

UNITED STATES RECEIVED BY  
DEPARTMENT OF THE INTERIOR

GEOLOGICAL SURVEY

DEC 27 1984

## APPLICATION FOR PERMIT TO DRILL, DEEPEN, OR PLUG BACK

## 1a. TYPE OF WORK

DRILL ☒

ARTESIA, OFFICE

DEEPEEN ☐ PLUG BACK ☐

## b. TYPE OF WELL

OIL  
WELL ☒GAS  
WELL ☐OTHER ☐SINGLE  
ZONE ☐MULTIPLE  
ZONE ☐

## 2. NAME OF OPERATOR

YATES PETROLEUM CORPORATION ✓

## 3. ADDRESS OF OPERATOR

207 South 4th Street, Artesia, New Mexico 88210

## 4. LOCATION OF WELL (Report location clearly and in accordance with any State requirements.\*)

At surface

1980' FNL and 1980' FEL

At proposed prod. zone

same

## 14. DISTANCE IN MILES AND DIRECTION FROM NEAREST TOWN OR POST OFFICE\*

Approximately 50 miles north of Roswell, New Mexico

## 15. DISTANCE FROM PROPOSED\*

LOCATION TO NEAREST  
PROPERTY OR LEASE LINE, FT.  
(Also to nearest drlg. unit line, if any)

1980'

## 16. NO. OF ACRES IN LEASE

2560

17. NO. OF ACRES ASSIGNED  
TO THIS WELL

160

## 18. DISTANCE FROM PROPOSED LOCATION\*

TO NEAREST WELL, DRILLING, COMPLETED,  
OR APPLIED FOR, ON THIS LEASE, FT.

## 19. PROPOSED DEPTH

3450'

## 20. ROTARY OR CABLE TOOLS

Rotary

## 21. ELEVATIONS (Show whether DF, RT, GR, etc.)

4954' GL

## 22. APPROX. DATE WORK WILL START\*

ASAP

## 23.

## PROPOSED CASING AND CEMENTING PROGRAM

SIZE OF HOLE	SIZE OF CASING	WEIGHT PER FOOT	SETTING DEPTH	QUANTITY OF CEMENT
17 1/2"	13 3/8"	48# H-40	400'	500 sx circulated
7 7/8"	4 1/2"	10.5# K-55	TD	200 sx

We propose to drill and test the Abo and intermediate formations. Approximately 450 to 800' of surface casing will be set and cement circulated to shut off gravel and caving. 8 5/8" intermediate casing will be run to 900' if needed. If commercial, production casing will be run and cemented with adequate cover, perforated and stimulated as needed for production.

MUD PROGRAM: FW gel/LCM to 900', brine to TD.

BOP PROGRAM: BOP's will be installed at the offset and tested daily.

GAS NOT DEDICATED.

IN ABOVE SPACE DESCRIBE PROPOSED PROGRAM: If proposal is to deepen or plug back, give data on present productive zone and proposed new productive zone. If proposal is to drill or deepen directionally, give pertinent data on subsurface locations and measured and true vertical depths. Give blowout preventer program, if any.

## 24.

SIGNED

TITLE

Regulatory Agent

DATE

11/28/84

(This space for Federal or State office use)

PERMIT NO.

APPROVAL DATE

APPROVED BY

S/ Gary Wood, Acting

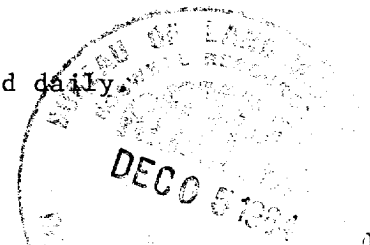
TITLE

Area Manager

DATE

12-24-84

CONDITIONS OF APPROVAL, IF ANY:



Partial IP  
APL-7446  
1-11-85

**NEW MEXICO OIL CONSERVATION COMMISSION  
WELL LOCATION AND ACREAGE DEDICATION PLAT**

Form C-102  
Supersedes C-128  
Effective 1-1-65

All distances must be from the outer boundaries of the Section.

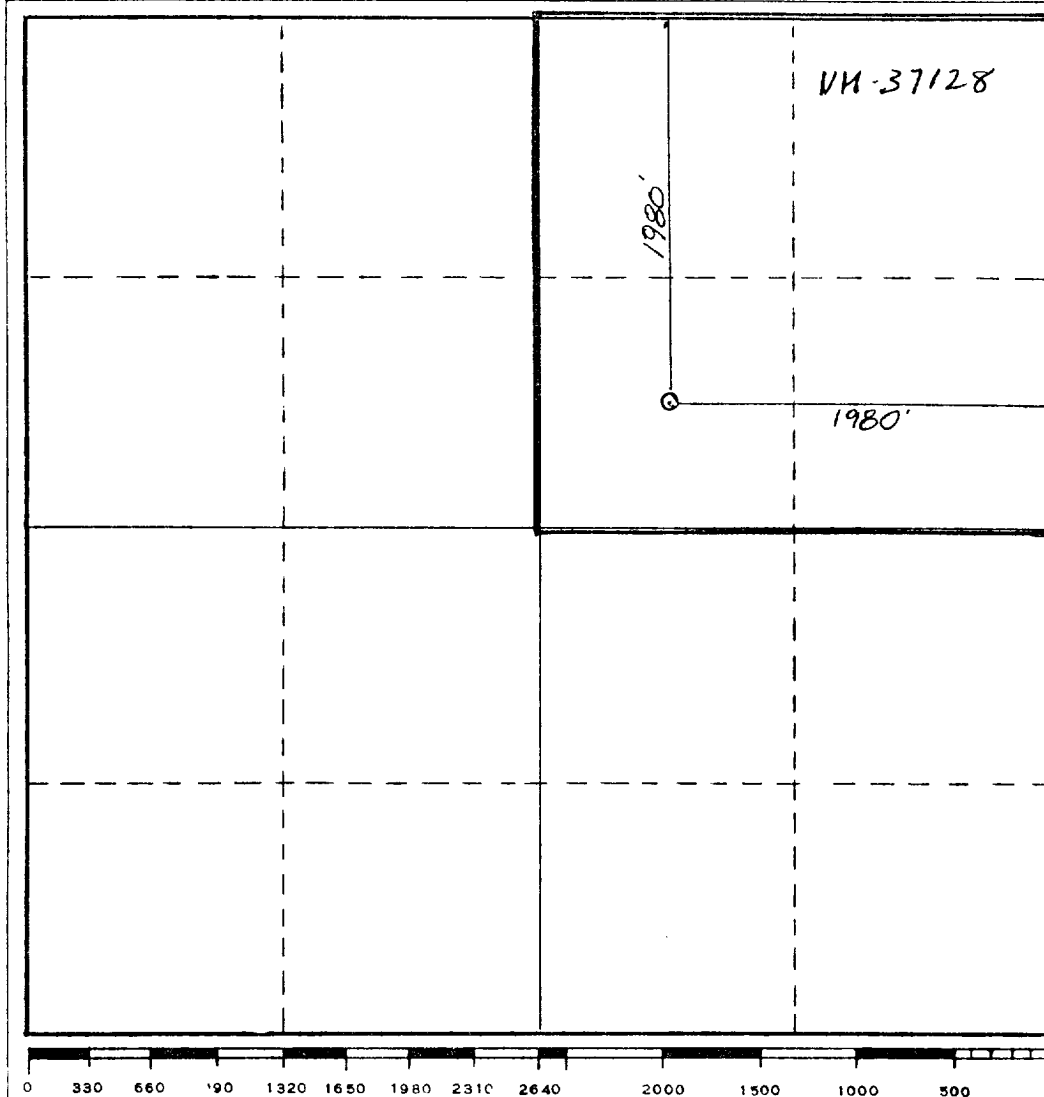
Operator <b>YATES PETROLEUM CORPORATION</b>			Lease <b>Chisum AAW Federal</b>		Well No. <b>1</b>
Unit Letter <b>G</b>	Section <b>27</b>	Township <b>2 South</b>	Range <b>19 East</b>	County <b>Lincoln</b>	
Actual Footage Location of Well: <div style="display: flex; justify-content: space-between;"> <span><b>1980</b> feet from the <b>North</b> line and <b>1980</b> feet from the <b>East</b> line</span> </div>					
Ground Level Elev. <b>4954.</b>	Producing Formation <b>ABO</b>	Pool <b>WILDCAT</b>		Dedicated Acreage: <b>160</b> Acres	

1. Outline the acreage dedicated to the subject well by colored pencil or hachure marks on the plat below.
2. If more than one lease is dedicated to the well, outline each and identify the ownership thereof (both as to working interest and royalty).
3. If more than one lease of different ownership is dedicated to the well, have the interests of all owners been consolidated by communitization, unitization, force-pooling, etc?

☐ Yes    ☐ No    If answer is "yes," type of consolidation \_\_\_\_\_

If answer is "no," list the owners and tract descriptions which have actually been consolidated. (Use reverse side of this form if necessary.) \_\_\_\_\_

No allowable will be assigned to the well until all interests have been consolidated (by communitization, unitization, forced-pooling, or otherwise) or until a non-standard unit, eliminating such interests, has been approved by the Commission.



**CERTIFICATION**

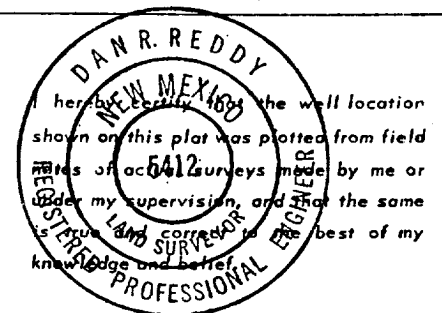
I hereby certify that the information contained herein is true and complete to the best of my knowledge and belief.

*Gliserio Rodriguez*  
Name  
**Gliserio Rodriguez**

Position  
**Regulatory Agent**

Company  
**Yates Petroleum Corporation**

Date  
**11/28/84**



Date Surveyed  
**October 17, 1984**

Registered Professional Engineer  
and/or Land Surveyor

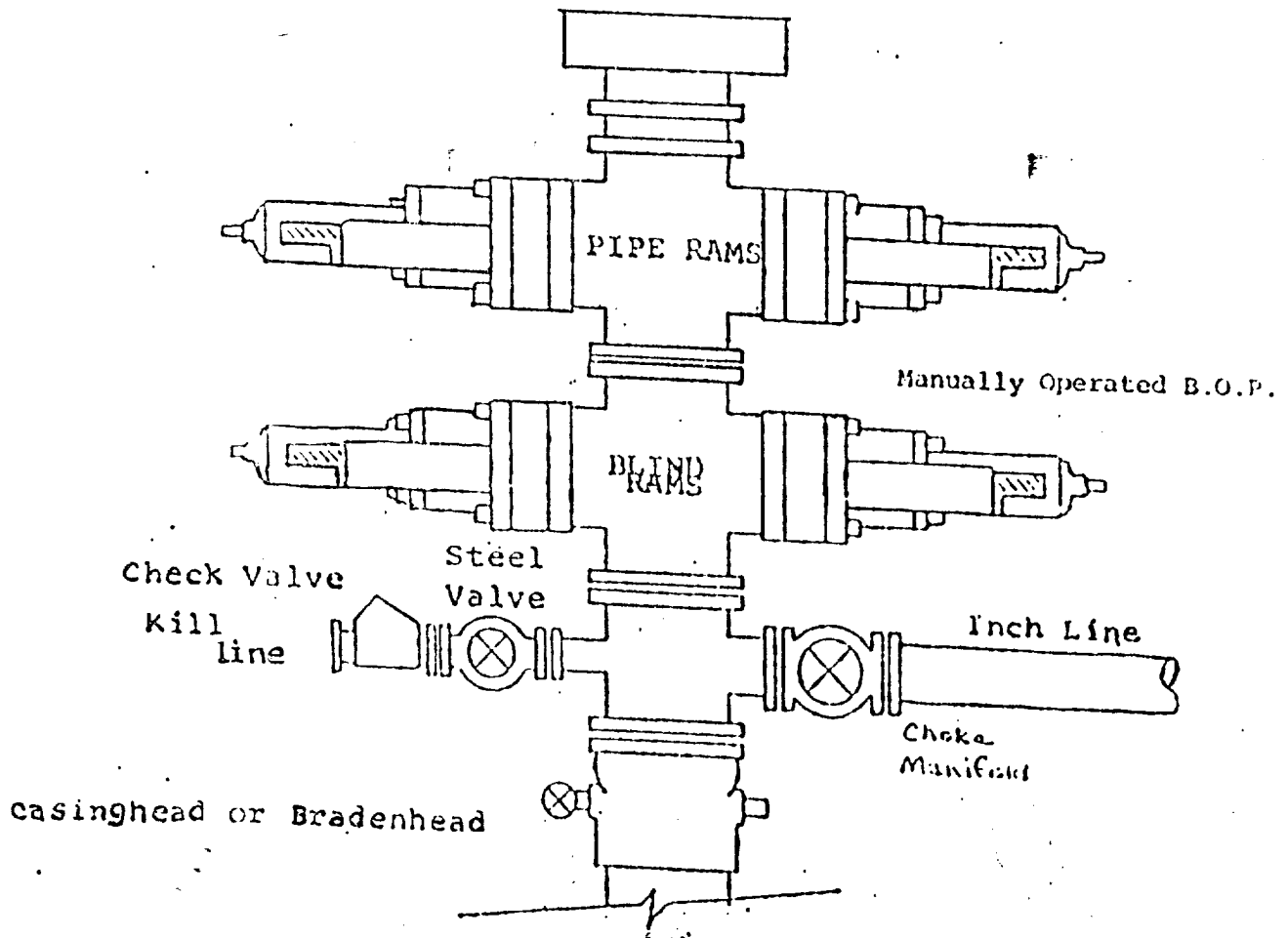
*Dan R. Reddy*  
Certificate No.

**NM PE&LS NO. 5412**

# EXHIBIT B

## BDP DIAGRAM

RATED 3000<sup>psi</sup>



YATES PETROLEUM CORPORATION  
Chisum "AAW" Federal #1  
1980' FNL and 1980' FEL  
Section 27-T2S-R19E  
Lincoln County, New Mexico

In conjunction with Form 9-331C, Application for Permit to Drill subject well, Yates Petroleum Company submits the following ten items of pertinent information in accordance with BLM requirements.

1. The geologic surface formation is San Andres.
2. The estimated tops of geologic markers are as follows:

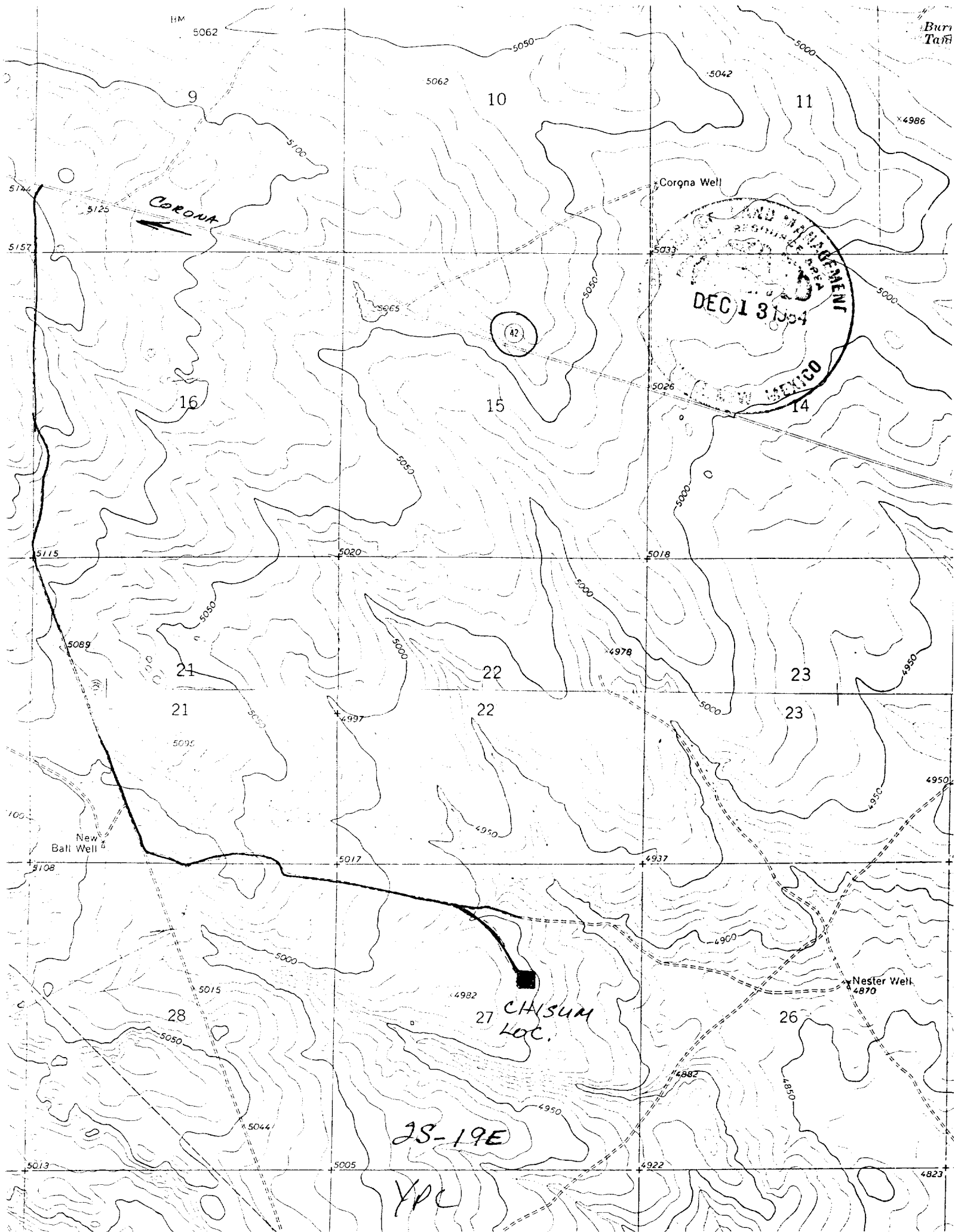
San Andres	surface	Abo	2360'
Glorieta	740'	Pre Cambrian	3350'
Yeso	880'	TD	3450'
Tubb	2060'		

3. The estimated depths at which anticipated water, oil or gas formations are expected to be encountered:

Water: 250'-350'

Oil or Gas: Abo - 2400'

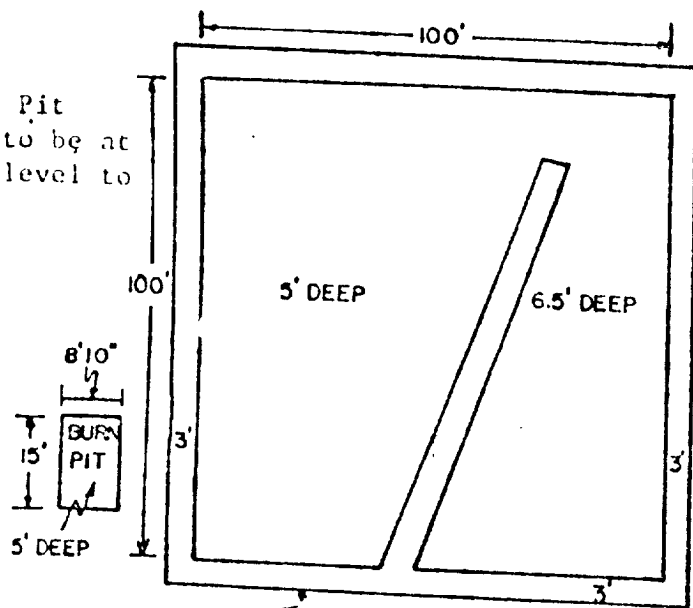
4. Proposed Casing Program: See Form 9-331C.
5. Pressure Control Equipment: See Form 9-331C.
6. Mud Program: See Form 9-331C.
7. Auxiliary Equipment: Kelly Cock; pit level indicators and flow sensor equipment; sub with full-opening valve on floor, drill pipe connection.
8. Testing, Logging and Coring Program:  
  
Samples: Surface casing to TD. 10' samples  
DST's: As warranted from 2500' to 2900'  
Coring: Gearhart "Hard Rock" cores from 2525-2550 and 2740-2780; otherwise as warranted.  
Logging: CNL-FDC TD to csg. w/GR-CNL up to surface, DLL w/RxO - TD to csg; EPT from TD to 2000'.  
Mud Logging: One man unit from surface to TD.
9. No abnormal pressures or temperatures are anticipated.
10. Anticipated starting date: As soon as possible after approval.



# YATES PETROLEUM CORP.

## Exhibit C

Reserve Pit  
Bottom to be at  
ground level to  
1 ft.



NOTE:

Inside walls must be as  
high and wide as outer  
walls of pit.

