

30-027-20034

Form 9-331C
Rev. 1963

DD

Artesia, NM 88210

JAN 18 1985

UNITED STATES
DEPARTMENT OF THE INTERIOR

GEOLOGICAL SURVEY

APPLICATION FOR PERMIT TO DRILL, DEEPEN, OR PLUG BACK

ART. TYPE OF WORK

DRILL ☒DEEPEN ☐PLUG BACK ☐

b. TYPE OF WELL

OIL
WELL ☐GAS
WELL ☒

OTHER

SINGLE
ZONE ☐MULTIPLE
ZONE ☐

2. NAME OF OPERATOR

Yates Petroleum Corporation ✓

3. ADDRESS OF OPERATOR

207 South Fourth Street. Artesia, New Mexico 88210

4. LOCATION OF WELL (Report location clearly and in accordance with any State requirements.)*

At surface

1830' FNL and 1980' FWL

At proposed prod. zone

same

14. DISTANCE IN MILES AND DIRECTION FROM NEAREST TOWN OR POST OFFICE*

Approximately 42 miles west of Roswell, New Mexico

15. DISTANCE FROM PROPOSED*

LOCATION TO NEAREST

PROPERTY OR LEASE LINE, FT.

(Also to nearest drlg. unit line, if any)

1830'

16. NO. OF ACRES IN LEASE

1880

17. NO. OF ACRES ASSIGNED
TO THIS WELL

160

18. DISTANCE FROM PROPOSED LOCATION*

TO NEAREST WELL, DRILLING, COMPLETED,
OR APPLIED FOR, ON THIS LEASE, FT.

19. PROPOSED DEPTH

3400

20. ROTARY OR CABLE TOOLS

Rotary

21. ELEVATIONS (Show whether DF, RT, GR, etc.)

5003' GL

22. APPROX. DATE WORK WILL START*

ASAP

23.

PROPOSED CASING AND CEMENTING PROGRAM

SIZE OF HOLE	SIZE OF CASING	WEIGHT PER FOOT	SETTING DEPTH	QUANTITY OF CEMENT
17 1/2	13 3/8	48#-H-40	930	900 sx circulated
7 7/8	5 1/2	14#-K-55	TD	200 sx circ.

We propose to drill and test the Abo and intermediate formations. Approximately 930' of surface casing will be set and cement circulated to shut off gravel and caving. If commercial, production casing will be run and cemented with adequate cover, perforated and stimulated as needed for production.

MUD PROGRAM: FW gel/LCM to 930' brine to TD

BOP PROGRAM: BOP's will be installed at the offset and tested

GAS NOT DEDICATED



IN ABOVE SPACE DESCRIBE PROPOSED PROGRAM: If proposal is to deepen or plug back, give data on present productive zone and proposed new productive zone. If proposal is to drill or deepen directionally, give pertinent data on subsurface locations and measured and true vertical depths. Give blowout preventer program, if any.

24.

SIGNED

TITLE Regulatory Agent

DATE 1/8/85

(This space for Federal or State office use)

PERMIT NO.

APPROVAL DATE

APPROVED BY

S/Phil Kirk

TITLE

Area Manager

DATE

1-14-85

CONDITIONS OF APPROVAL, IF ANY:

MEXICO OIL CONSERVATION COMMISSION
WELL LOCATION AND ACREAGE DEDICATION PLAT

Form C-102
Supersedes C-128
Effective 1-1-65

All distances must be from the outer boundaries of the Section.

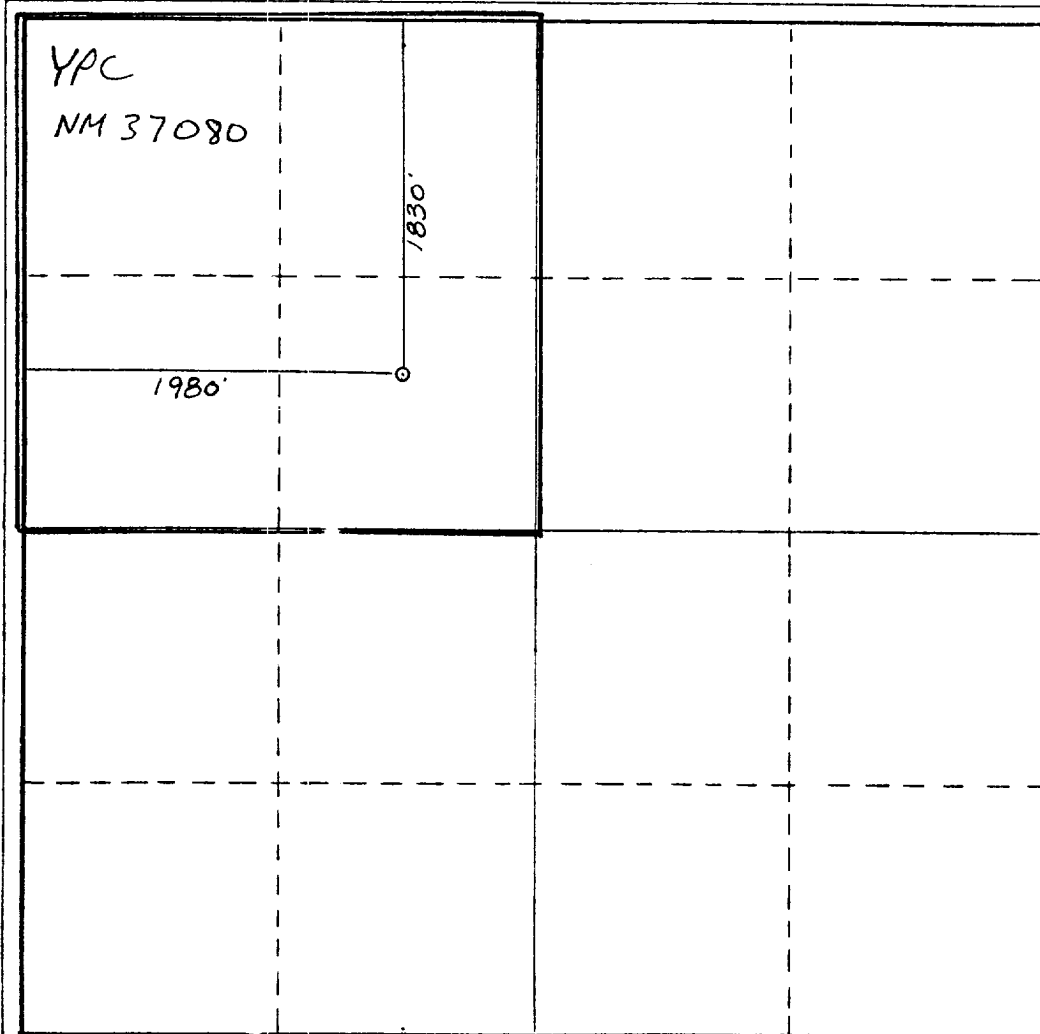
Operator YATES PETROLEUM CORPORATION			Lease Macho Uno ABL Federal			Well No. 1
Unit Letter F	Section 27	Township 6 South	Range 19 East	County Lincoln		
Actual Footage Location of Well: 1830 feet from the North line and 1980 feet from the West line						
Ground Level Elev. 5003.	Producing Formation ABO		Pool WILDCAT		Dedicated Acreage: 160 Acres	

1. Outline the acreage dedicated to the subject well by colored pencil or hachure marks on the plat below.
2. If more than one lease is dedicated to the well, outline each and identify the ownership thereof (both as to working interest and royalty).
3. If more than one lease of different ownership is dedicated to the well, have the interests of all owners been consolidated by communitization, unitization, force-pooling, etc?

☐ Yes ☐ No If answer is "yes," type of consolidation _____

If answer is "no," list the owners and tract descriptions which have actually been consolidated. (Use reverse side of this form if necessary.) _____

No allowable will be assigned to the well until all interests have been consolidated (by communitization, unitization, forced-pooling, or otherwise) or until a non-standard unit, eliminating such interests, has been approved by the Commission.



CERTIFICATION

I hereby certify that the information contained herein is true and complete to the best of my knowledge and belief.

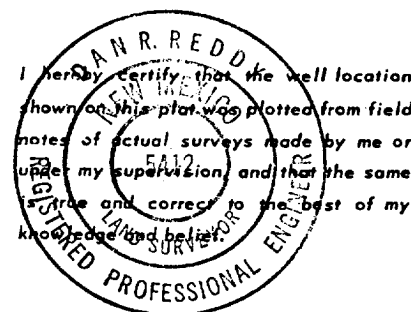
Gliserio Rodriguez
Name

GLISERIO RODRIGUEZ
Position

REG. AGT.
Company

YATES PET. CORP.
Date

1-8-85



Date Surveyed
December 28, 1984

Registered Professional Engineer
and/or Land Surveyor

Dan R. Reddy
Certificate No.

NM PE&LS NO. 5412

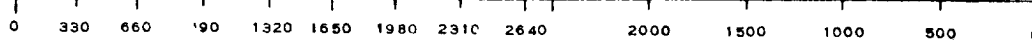
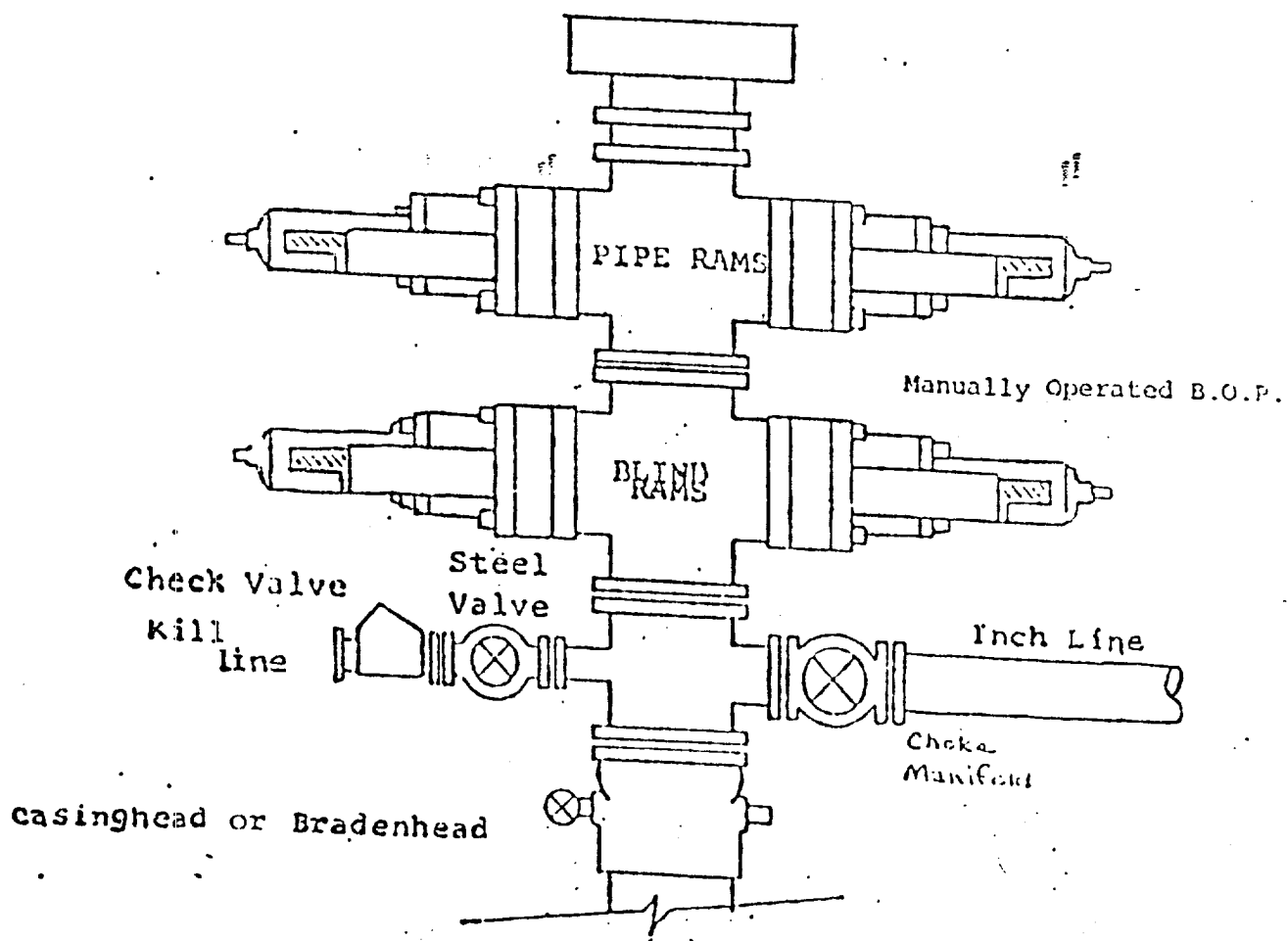


EXHIBIT B
BDP DIAGRAM
RATED 3000[±]



YATES PETROLEUM CORPORATION
Macho Uno "ABL" Federal #1
1830' FNL and 1980' FWL
Section 27-T6S-R19E
Lincoln County, New Mexico

In conjunction with Form 9-331C, Application for Permit to Drill subject well, Yates Petroleum Corporation submits the following ten items of pertinent information in accordance with BLM requirements.

1. The geologic surface formation is San Andres.

2. The estimated tops of geologic markers are as follows:

San Adres	surface	Pre Cambrian	3310
Glorieta	740	TD	3400
Yeso	880		
Tubb	2060		
Abo	2460		

3. The estimated depths at which anticipated water, oil or gas formations are expected to be encountered:

Water: 250'-350'

Oil or Gas: Abo 2400'

4. Proposed Casing Program: See Form 9-331C.

5. Pressure Control Equipment: See Form 9-331C.

6. Mud Program: See Form 9-331C.

7. Auxiliary Equipment: Kelly Cock; pit level indicators and flow sensor equipment; sub with full-opening valve on floor, drill pipe connection.

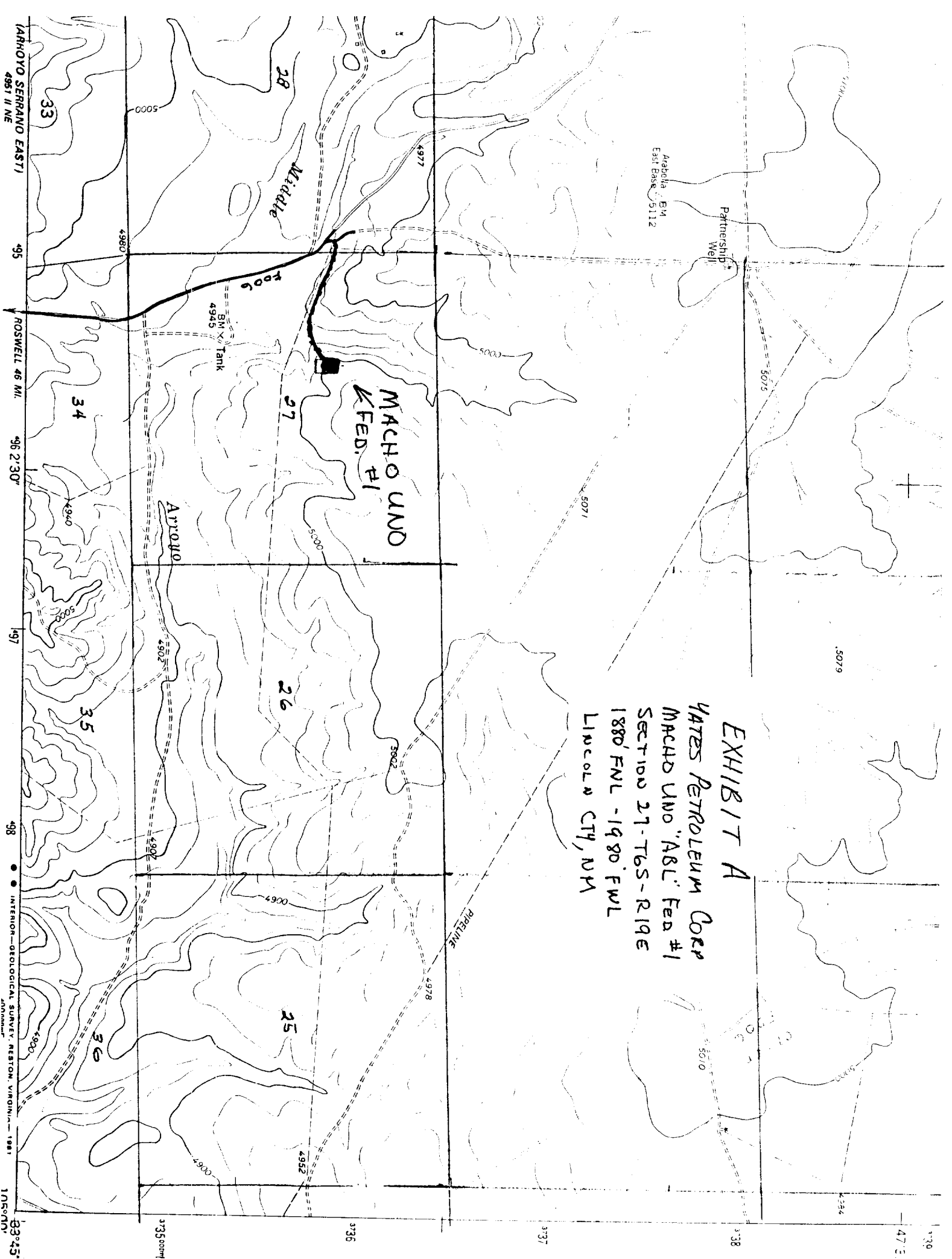
8. Testing, Logging and Coring Program:

Samples:	Surface casing to TD. 10' samples
DST's:	As warranted
Coring:	As warranted
Logging:	CNL-FDC TD to csg w/GR-Only to surface, DLL w/RxO from TD to csg. EPT-TD to csg.
Mud logging:	One man unit from surface to TD.

9. No abnormal pressures or temperatures are anticipated.

10. Anticipated starting date: As soon as possible after approval.

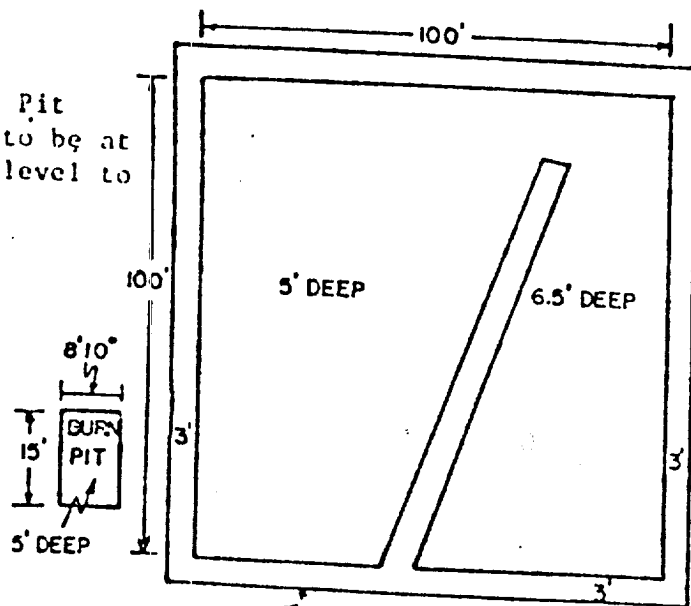
YATES PETROLEUM CORP
MACHADO UNO "ABL" FED #1
SECTION 27-T65-R19E
1880' FNL - 1980' FWL
LINCOLN CITY, NM



YALES PETROLEUM CORP.

Exhibit C

Reserve Pit
bottom to be at
ground level to
1 ft.



NOTE:

Inside walls must be as
high and wide as outer
walls of pit.

