

JAN 24 1985

(Other instructions on
reverse side)

O. C. D.

ARTESIA OFFICE

30-027-20035

5. LEASE DESIGNATION AND SERIAL NO.

NM-37139

6. IF INDIAN, ALLOTTEE OR TRIBE NAME

7. UNIT AGREEMENT NAME

8. FARM OR LEASE NAME

Archuleta "ABD" Federal

9. WELL NO.

1

10. FIELD AND POOL, OR WILDCAT

Wildcat- Abo

11. SEC., T., R., M., OR BLK.
AND SURVEY OR AREA

Section 23-T8S-R19E

12. COUNTY OR PARISH

13. STATE

Lincoln

N.M.

1a. TYPE OF WORK

DRILL ☒DEEPEN ☐PLUG BACK ☐

b. TYPE OF WELL

OIL
WELL ☐GAS
WELL ☐

OTHER

SINGLE
ZONE ☐MULTIPLE
ZONE ☐

2. NAME OF OPERATOR

YATES PETROLEUM CORPORATION

3. ADDRESS OF OPERATOR

207 South 4th Street, Artesia, New Mexico 88210

4. LOCATION OF WELL (Report location clearly and in accordance with any State requirements.)

At surface

1980' FSL and 700' FWL

At proposed prod. zone

same

14. DISTANCE IN MILES AND DIRECTION FROM NEAREST TOWN OR POST OFFICE*

Approximately 43 miles west of Roswell

15. DISTANCE FROM PROPOSED*

LOCATION TO NEAREST
PROPERTY OR LEASE LINE, FT.
(Also to nearest drlg. unit line, if any)

700'

16. NO. OF ACRES IN LEASE

2560

17. NO. OF ACRES ASSIGNED
TO THIS WELL

160

18. DISTANCE FROM PROPOSED LOCATION*

TO NEAREST WELL, DRILLING, COMPLETED,
OR APPLIED FOR, ON THIS LEASE, FT.

19. PROPOSED DEPTH

3300'

20. ROTARY OR CABLE TOOLS

Rotary

21. ELEVATIONS (Show whether DF, RT, GR, etc.)

4908. GL

22. APPROX. DATE WORK WILL START*

ASAP

23.

PROPOSED CASING AND CEMENTING PROGRAM

SIZE OF HOLE	SIZE OF CASING	WEIGHT PER FOOT	SETTING DEPTH	QUANTITY OF CEMENT
17 1/2"	13 3/8"	48# H-40	600'	500 sx circulated
7 7/8"	5 1/2"	14# K-55	TD	200 sx

We propose to drill and test the Abo and intermediate formations. Approximately 600' of surface casing will be set and cement circulated to shut off gravel and caving. If commercial, production casing will be run and cemented with adequate cover, perforated and stimulated as needed for production.

MUD PROGRAM: FW gel/LCM to 600', brine to TD.

BOP PROGRAM: BOP's will be installed at the offset and tested as required.

GAS NOT DEDICATED.

IN ABOVE SPACE DESCRIBE PROPOSED PROGRAM: If proposal is to deepen or plug back, give data on present productive zone and proposed new productive zone. If proposal is to drill or deepen directionally, give pertinent data on subsurface locations and measured and true vertical depths. Give blowout preventer program, if any.

24.

SIGNED

TITLE

Regulatory Agent

DATE

11/28/84

(This space for Federal or State office use)

PERMIT NO.

APPROVAL DATE

APPROVED BY

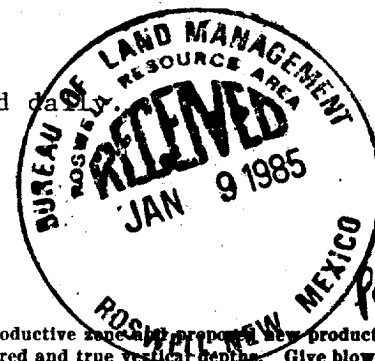
TITLE

Area Manager

DATE

1-22-85

CONDITIONS OF APPROVAL, IF ANY:



**W MEXICO OIL CONSERVATION COMMISSION
WELL LOCATION AND ACREAGE DEDICATION PLAT**

Form C-102
Supersedes C-128
Effective 1-1-65

All distances must be from the outer boundaries of the Section.

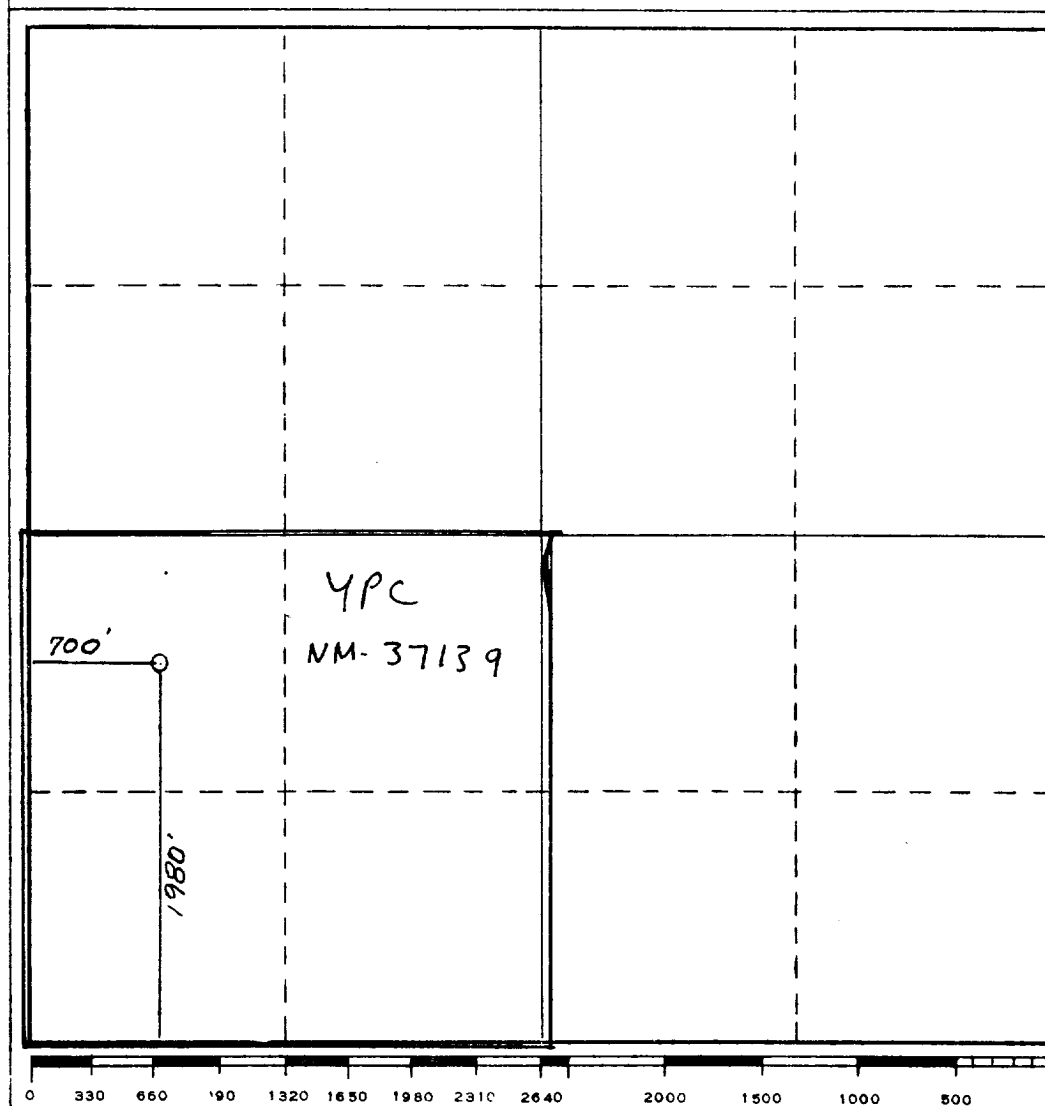
Operator YATES PETROLEUM CORPORATION			Lease Archuleta ABD Federal		Well No. 1
Unit Letter L	Section 23	Township 8 South	Range 19 East	County Lincoln	
Actual Footage Location of Well: <div style="display: flex; justify-content: space-between;"> 1980 feet from the South line and 700 feet from the West line </div>					
Ground Level Elev. 4908.	Producing Formation abo	Pool willcat	Dedicated Acreage: 160 Acres		

1. Outline the acreage dedicated to the subject well by colored pencil or hatchure marks on the plat below.
2. If more than one lease is dedicated to the well, outline each and identify the ownership thereof (both as to working interest and royalty).
3. If more than one lease of different ownership is dedicated to the well, have the interests of all owners been consolidated by communitization, unitization, force-pooling, etc?

☐ Yes ☐ No If answer is "yes," type of consolidation _____

If answer is "no," list the owners and tract descriptions which have actually been consolidated. (Use reverse side of this form if necessary.) _____

No allowable will be assigned to the well until all interests have been consolidated (by communitization, unitization, forced-pooling, or otherwise) or until a non-standard unit, eliminating such interests, has been approved by the Commission.



CERTIFICATION

I hereby certify that the information contained herein is true and complete to the best of my knowledge and belief.

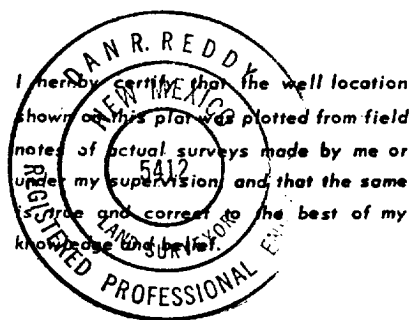
Gliserio Rodriguez

Name
GLISERIO RODRIGUEZ

Position
REGULATORY AGENT

Company
YATES PET. CORP.

Date
1-8-85



Date Surveyed
December 28, 1984

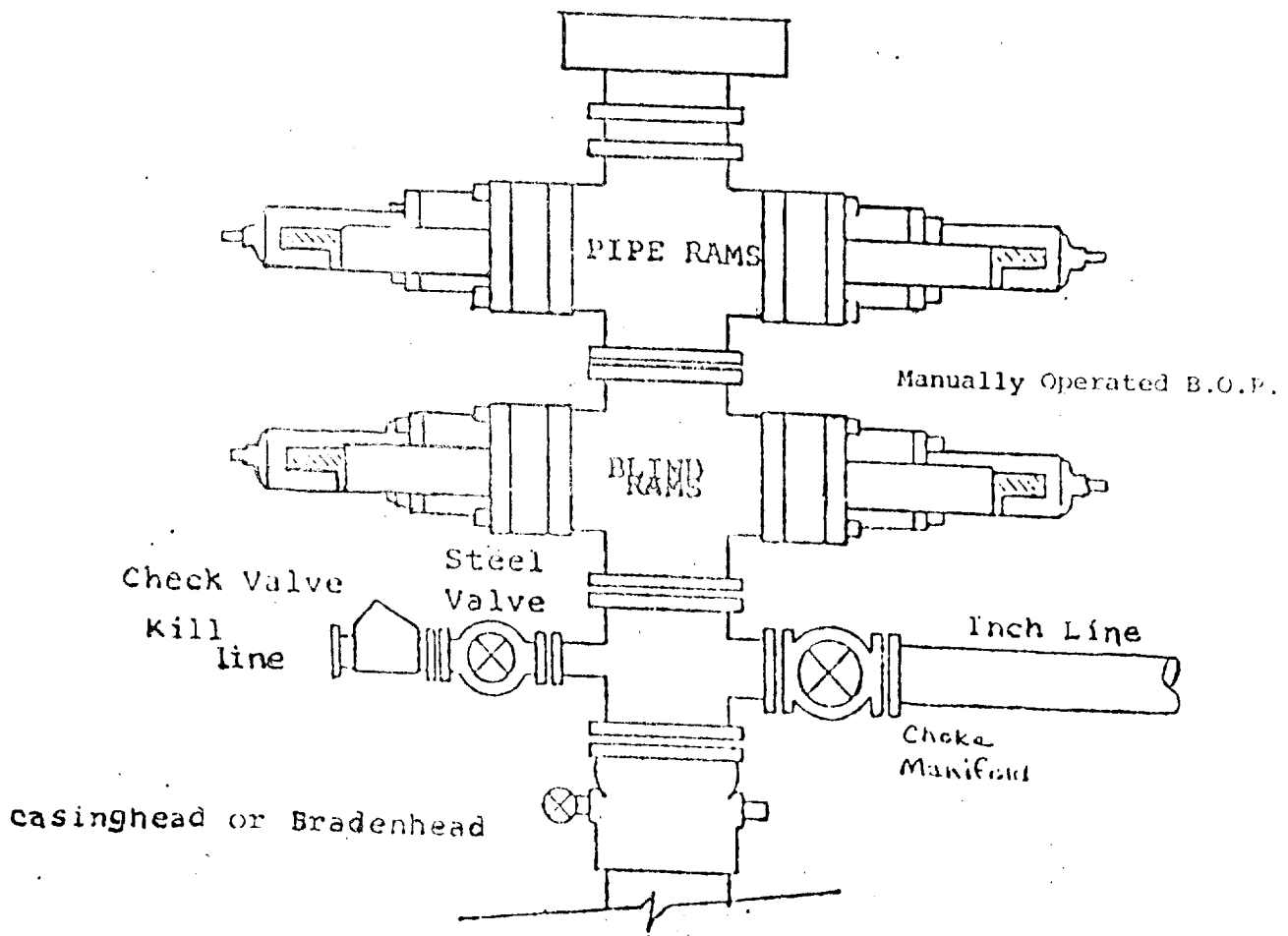
Registered Professional Engineer and/or Land Surveyor
Dan R. Reddy

Certificate No.
NM PE&LS NO. 5412

EXHIBIT B

BDP DIAGRAM

RATED 3000[#]



YATES PETROLEUM CORPORATION
Archuleta "ABD" Federal #1
1980' FSL and 700' FWL
Section 23-T8S-R19E
Lincoln County, New Mexico

In conjunction with Form 9-331C, Application for Permit to Drill subject well, Yates Petroleum Company submits the following ten items of pertinent information in accordance with BLM requirements.

1. The geologic surface formation is San Andres.
2. The estimated tops of geologic markers are as follows:

San Andres	surface	Abo	2000'
Glorieta	450'	Pre Cambrian	2700'
Yeso	550'	TD	3300'
Tubb	1625'		
3. The estimated depths at which anticipated water, oil or gas formations are expected to be encountered:

Water: 250'-350'

Oil or Gas: Abo 1900'
4. Proposed Casing Program: See Form 9-331C.
5. Pressure Control Equipment: See Form 9-331C.
6. Mud Program: See Form 9-331C.
7. Auxiliary Equipment: Kelly Cock; pit level indicators and flow sensor equipment; sub with full-opening valve on floor, drill pipe connection.
8. Testing, Logging and Coring Program:

Samples: Surface casing to TD. 10' samples.

DST's: As warranted.

Coring: As warranted.

Logging: CNL-FDC TD to csg w/GR-CNL up to surface, DLL w/RxO from TD to csg. EPT-TD to csg.

Mud Logging: One man unit from surface to TD.
9. No abnormal pressures or temperatures are anticipated.
10. Anticipated starting date: As soon as possible after approval.

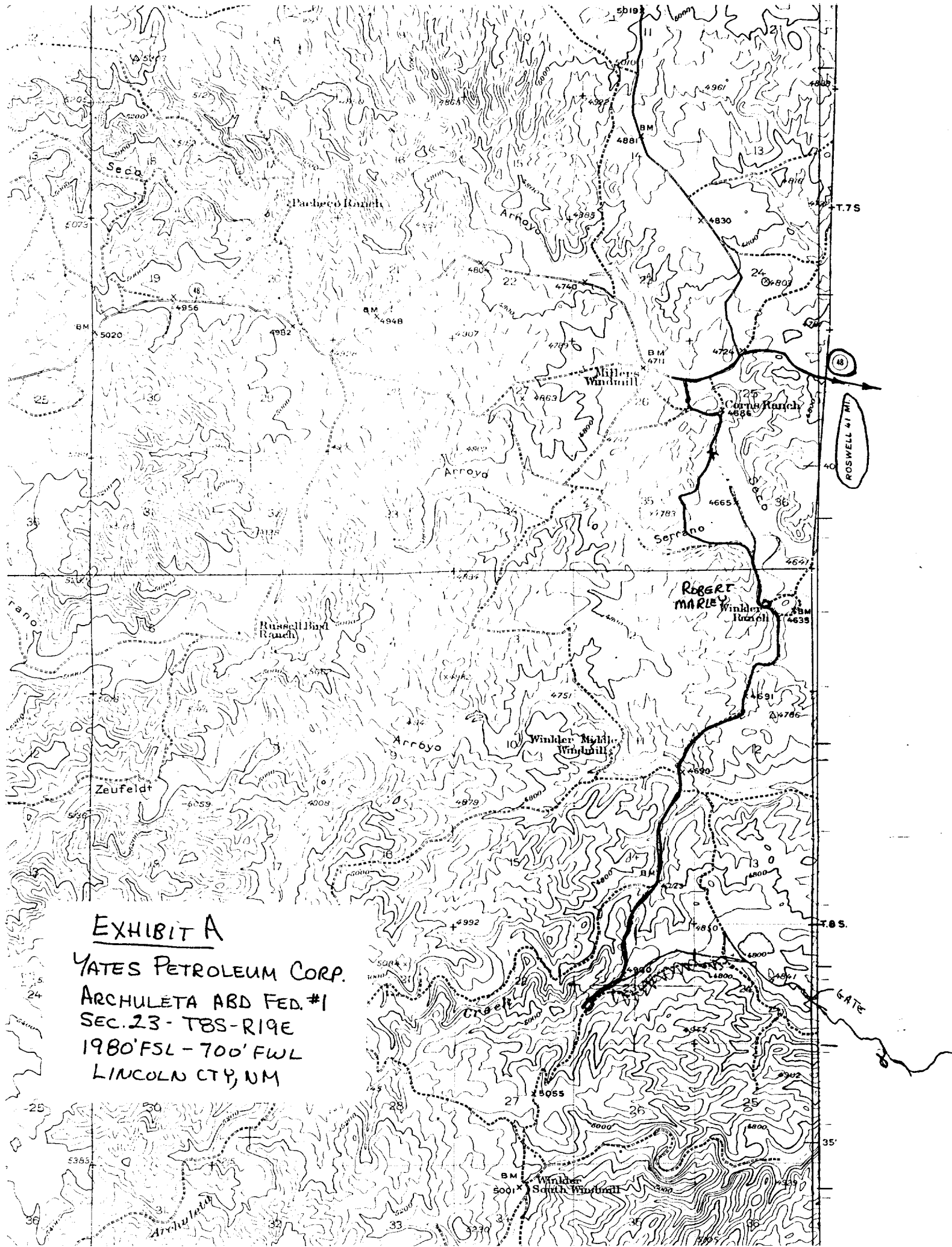


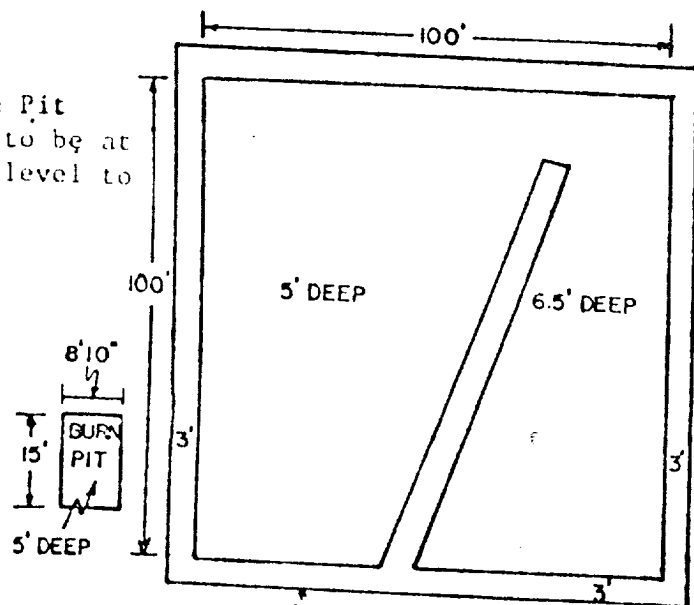
EXHIBIT A

YATES PETROLEUM CORP.
ARCHULETA ABD FED. #1
SEC. 23 - T8S-R19E
1980' FSL - 700' FWL
LINCOLN CTY, NM

YATES PETROLEUM CORP.

Exhibit C

Reserve Pit
Bottom to be at
ground level to
1 ft.



NOTE:

Inside walls must be as
high and wide as outer
walls of pit.

