

AMENDED

NEW MEXICO OIL CONSERVATION COMMISSION

30-029-20007

Form C-101  
Revised 1-1-65

RECEIVED

SEP 30 1981

O. C. D.

NO. OF COPIES RECEIVED		
DISTRIBUTION		
SANTA FE	1	
FILE	1	1
U.S.G.S.	2	
LAND OFFICE		
OPERATOR	1	

*Amended Location  
+ Proposed Depth*

5A. Indicate Type of Lease  
STATE  FEE

5. State Oil & Gas Lease No.

APPLICATION FOR PERMIT TO DRILL, DEEPEN, OR PLUG BACK AREA, OFFICE

1a. Type of Work  
 b. Type of Well DRILL  DEEPEN  PLUG BACK   
 OIL WELL  GAS WELL  OTHER  SINGLE ZONE  MULTIPLE ZONE

2. Name of Operator  
SEVILLE-TRIDENT CORPORATION ✓

3. Address of Operator  
908 West Wall, Midland, Texas 79701

4. Location of Well  
 UNIT LETTER *\* K* LOCATED 1980 FEET FROM THE South LINE  
 AND 1980 FEET FROM THE West LINE OF SEC. 4 TWP. 24-S RGE. 8-W NMPM

7. Unit Agreement Name

8. Farm or Lease Name  
McSherry

9. Well No.  
1

10. Field and Pool, or Wildcat  
Wildcat

12. County  
Luna

19. Proposed Depth  
12,000'

19A. Formation  
Paleozoic

20. Rotary or C.T.  
Rotary

21. Elevations (Show whether DF, RT, etc.)  
4255' G.L.

21A. Kind & Status Plug. Bond  
50,000 Blanket

21B. Drilling Contractor  
Willbros

22. Approx. Date Work will start  
November 1, 1981

23. #1SE-587-096  
PROPOSED CASING AND CEMENT PROGRAM

SIZE OF HOLE	SIZE OF CASING	WEIGHT PER FOOT	SETTING DEPTH	SACKS OF CEMENT	EST. TOP
17 1/2"	13 3/8"	54.50#	1000	900	Surface
12 1/4"	9 5/8"	40#	3500	1250	Surface
8 3/4"	5 1/2"	17 & 20#	12,000	1500	7500'

8 3/4" hole will be drilled below 3500 feet. In the event hole conditions are encountered below this depth which prevent a continuation of safe operations, a second intermediate string of 7", 23#/ft. casing will be run.

Blowout preventor diagram is attached.

Gas is not dedicated.

APPROVAL VALID FOR 180 DAYS  
PERMIT EXPIRES 4-2-82  
UNLESS DRILLING UNDERWAY

*Posted 10-2-81  
America 10-2-81*

IN ABOVE SPACE DESCRIBE PROPOSED PROGRAM; IF PROPOSAL IS TO DEEPEN OR PLUG BACK, GIVE DATA ON PRESENT PRODUCTIVE ZONE AND PROPOSED NEW PRODUCTIVE ZONE. GIVE BLOWOUT PREVENTER PROGRAM, IF ANY.

I hereby certify that the information above is true and complete to the best of my knowledge and belief.

Signed *Bill Baker* Bill Baker Title Agent Date September 28, 1981

(This space for State Use)

APPROVED BY *W.A. Gressett* TITLE SUPERVISOR, DISTRICT II DATE OCT 2 1981

CONDITIONS OF APPROVAL, IF ANY:

Cement must be circulated to surface behind 13 3/8" + 9 5/8" casing

All distances must be from the outer boundaries of the Section.

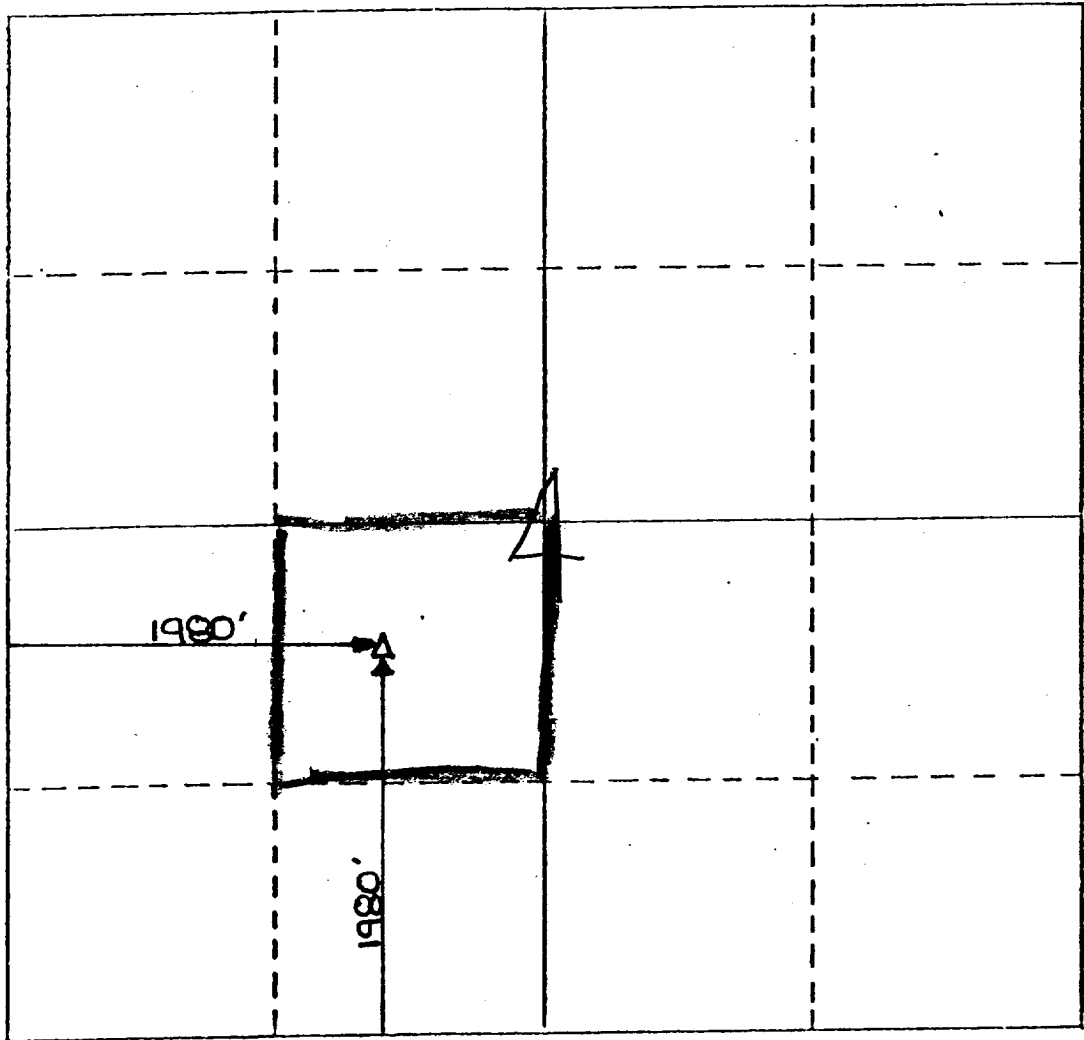
Operator Seville-Trident Corporation		Lease McSherry		Well No. 1
Unit Letter K	Section 4	Township 24 S.	Range 8 W.	County LUNA
Actual Footage Location of Well: 1980 feet from the SOUTH line and 1980 feet from the WEST line				
Ground Level Elev. 4255	Producing Formation Paleozoic	Pool Wildcat	Dedicated Acreage: 40 Acres	

1. Outline the acreage dedicated to the subject well by colored pencil or hachure marks on the plat below.
2. If more than one lease is dedicated to the well, outline each and identify the ownership thereof (both as to working interest and royalty).
3. If more than one lease of different ownership is dedicated to the well, have the interests of all owners been consolidated by communitization, unitization, force-pooling, etc?

Yes  No If answer is "yes," type of consolidation \_\_\_\_\_

If answer is "no," list the owners and tract descriptions which have actually been consolidated. (Use reverse side of this form if necessary.) \_\_\_\_\_

No allowable will be assigned to the well until all interests have been consolidated (by communitization, unitization, forced-pooling, or otherwise) or until a non-standard unit, eliminating such interests, has been approved by the Division.



CERTIFICATION

I hereby certify that the information contained herein is true and complete to the best of my knowledge and belief.

*R. Greenbaum*

Name  
R. Greenbaum  
Position  
President  
Company  
Seville-Trident Corp.

Date  
August 5, 1981

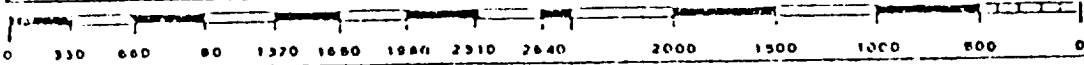
I hereby certify that the well location shown on this plat was plotted from field notes of actual surveys made by me or under my supervision, and that the same is true and correct to the best of my knowledge and belief.

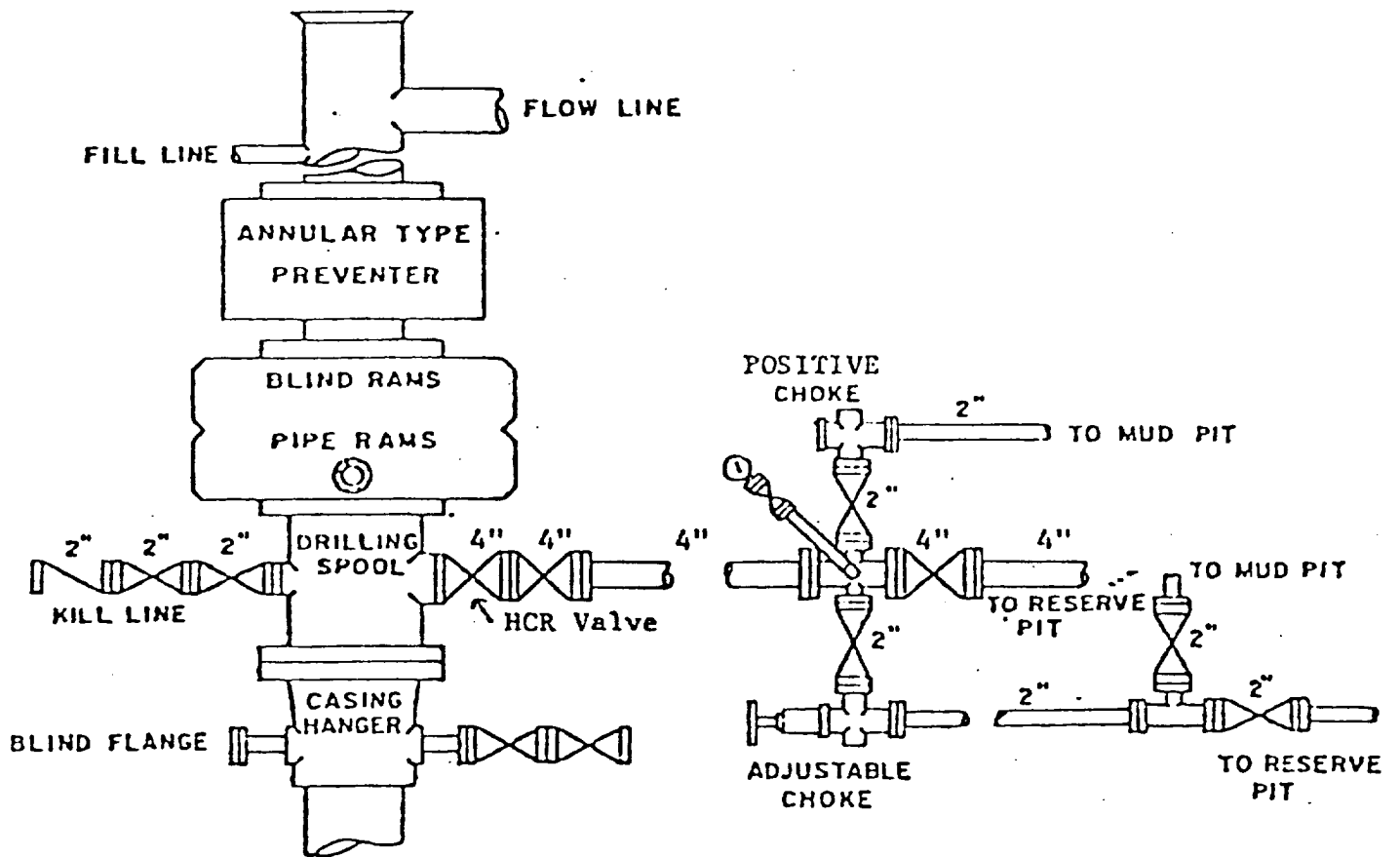
July 23, 1981

Date Surveyed  
*Karl J. King*  
Registered Professional Engineer  
and/or Land Surveyor

New Mexico No. 7250

Certificate No.





BOP STACK

RAM TYPE PREVENTERS  
5000 PSI WORKING PRESSURE

ANNULAR TYPE PREVENTER  
3000 PSI WORKING PRESSURE

BOP ARRANGEMENT