

30-029-20414
5. LEASE DESIGNATION AND SERIAL NO.

NM-34312-A

6. IF INDIAN, ALLOTTEE OR TRIBE NAME

7. UNIT AGREEMENT NAME

8. FARM OR LEASE NAME

Bisbee Hills

9. WELL NO.

1

10. FIELD AND POOL, OR WILDCAT

Wildcat-Granite Wash

11. SEC., T., R., M., OR BLK.
AND SURVEY OR AREA

Sec. 11, T26S, R11W

12. COUNTY OR PARISH

Luna

13. STATE

NM

1a. TYPE OF WORK

DRILL ☒DEEPEN ☐PLUG BACK ☐

b. TYPE OF WELL

OIL
WELL ☐GAS
WELL ☒

OTHER

SINGLE
ZONE ☒MULTIPLE
ZONE ☐

2. NAME OF OPERATOR

Marshall R. Young Oil Company ✓

3. ADDRESS OF OPERATOR

Box 145, Midland, Texas 79702

4. LOCATION OF WELL (Report location clearly and in accordance with any State requirements.)*

At surface

660' FNL & 1980' FEL NW/4 NE/4

At proposed prod. zone

Same

14. DISTANCE IN MILES AND DIRECTION FROM NEAREST TOWN OR POST OFFICE*

16 miles southwest of Deming, New Mexico

15. DISTANCE FROM PROPOSED*

LOCATION TO NEAREST
PROPERTY OR LEASE LINE, FT.
(Also to nearest drlg. unit line, if any)

660' N

16. NO. OF ACRES IN LEASE

480

17. NO. OF ACRES ASSIGNED
TO THIS WELL

320

18. DISTANCE FROM PROPOSED LOCATION*
TO NEAREST WELL, DRILLING, COMPLETED,
OR APPLIED FOR, ON THIS LEASE, FT.

N/A

19. PROPOSED DEPTH

10,000'

20. ROTARY OR CABLE TOOLS

Rotary

21. ELEVATIONS (Show whether DF, RT, GR, etc.)

4274' GR

22. APPROX. DATE WORK WILL START*

July 1, 1983

23. PROPOSED CASING AND CEMENTING PROGRAM

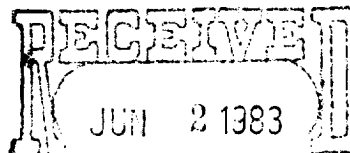
SIZE OF HOLE	SIZE OF CASING	WEIGHT PER FOOT	SETTING DEPTH	QUANTITY OF CEMENT
17 1/2"	13 3/8"	54.5#	1000' ±	850 sx (circulate)
12 1/4"	9 5/8"	36.0#	4500' ±	1551 sx (circulate)
7 7/8"	5 1/2"	17.0#	10000' ±	1310 sx

Proposed to drill to the Granite Wash formation and test all zones of interest for commercial production.

BOP sketch is attached.

RECEIVED

JUL 06 1983

O. C. D.
ARTEGIA, OFFICE

OIL & GAS

ROSWELL, NEW MEXICO

IN ABOVE SPACE DESCRIBE PROPOSED PROGRAM: If proposal is to deepen or plug back, give data on present productive zone and proposed new productive zone. If proposal is to drill or deepen directionally, give pertinent data on subsurface locations and measured and true vertical depths. Give blowout preventer program, if any.

24.

SIGNED

TITLE Agent

DATE 6/2/83

(This space for Federal or State office use)

PERMIT NO.

APPROVAL DATE

APPROVED BY

TITLE

DATE

CONDITIONS OF APPROVAL, IF ANY:

APPROVAL SUBJECT TO
GENERAL REQUIREMENTS AND
SPECIAL STIPULATIONS
ATTACHED

OIL CONSERVATION DIVISION

P. O. BOX 2080

SANTA FE, NEW MEXICO 87501

Form C-102

Revised 10-1-78

STATE OF NEW MEXICO
ENERGY AND MINERALS DEPARTMENT

All distances must be from the outer boundaries of the Section.

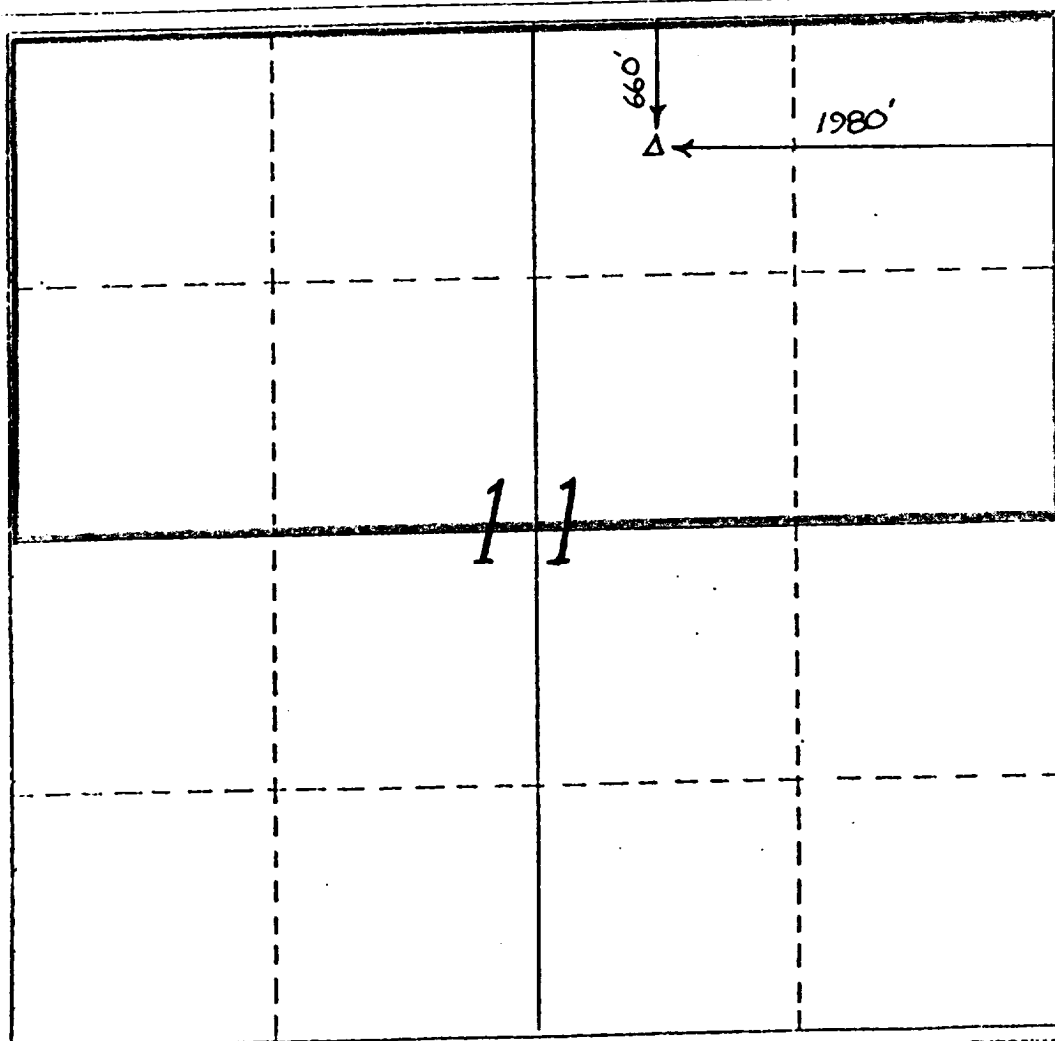
Operator Marshall R. Young Oil Co.			Lease Bisbee Hills		Well No. 1
Unit Letter B	Section 11	Township 26S.	Range 11W.	County LUNA	
Actual Postage Location of Well: 660 feet from the NORTH line and 1980 feet from the EAST line					
Ground Level Elev. 4274	Producing Formation Granite Wash	Pool Wildcat	Dedicated Acreage: 320 Acres		

1. Outline the acreage dedicated to the subject well by colored pencil or hatchure marks on the plat below.
2. If more than one lease is dedicated to the well, outline each and identify the ownership thereof (both as to working interest and royalty).
3. If more than one lease of different ownership is dedicated to the well, have the interests of all owners been consolidated by communitization, unitization, force-pooling, etc?

☐ Yes ☐ No If answer is "yes," type of consolidation _____

If answer is "no," list the owners and tract descriptions which have actually been consolidated. (Use reverse side of this form if necessary.) _____

No allowable will be assigned to the well until all interests have been consolidated (by communitization, unitization, forced-pooling, or otherwise) or until a non-standard unit, eliminating such interests, has been approved by the Division.



CERTIFICATION

I hereby certify that the information contained herein is true and complete to the best of my knowledge and belief.

Name Terry W. Franklin
Position
Agent
Company
Marshall R. Young Oil Co.
Date
6/02/83

I hereby certify that the well location shown on this plat was plotted from field notes of actual surveys made by me or under my supervision, and that the same is true and correct to the best of my knowledge and belief.

JUNE 1, 1983

Date Surveyed
Karl D. King
Registered Professional Engineer
and/or Land Surveyor

NEW MEXICO No. 7250
Certificate No.

0 330 660 990 1320 1650 1980 2310 2640 2970 3300 3630 3960 4290 4620 4950 5280 5610 5940 6270 6600

Application To Drill
Marshall R. Young Oil Company
Bisbee Hills No. 1
660' FNL & 1980' FEL
Sec. 11, T26S, R11W
Luna County, New Mexico
NM-34312-A

The following items supplement Form 9-331C in accordance with instructions contained in NTL-6:

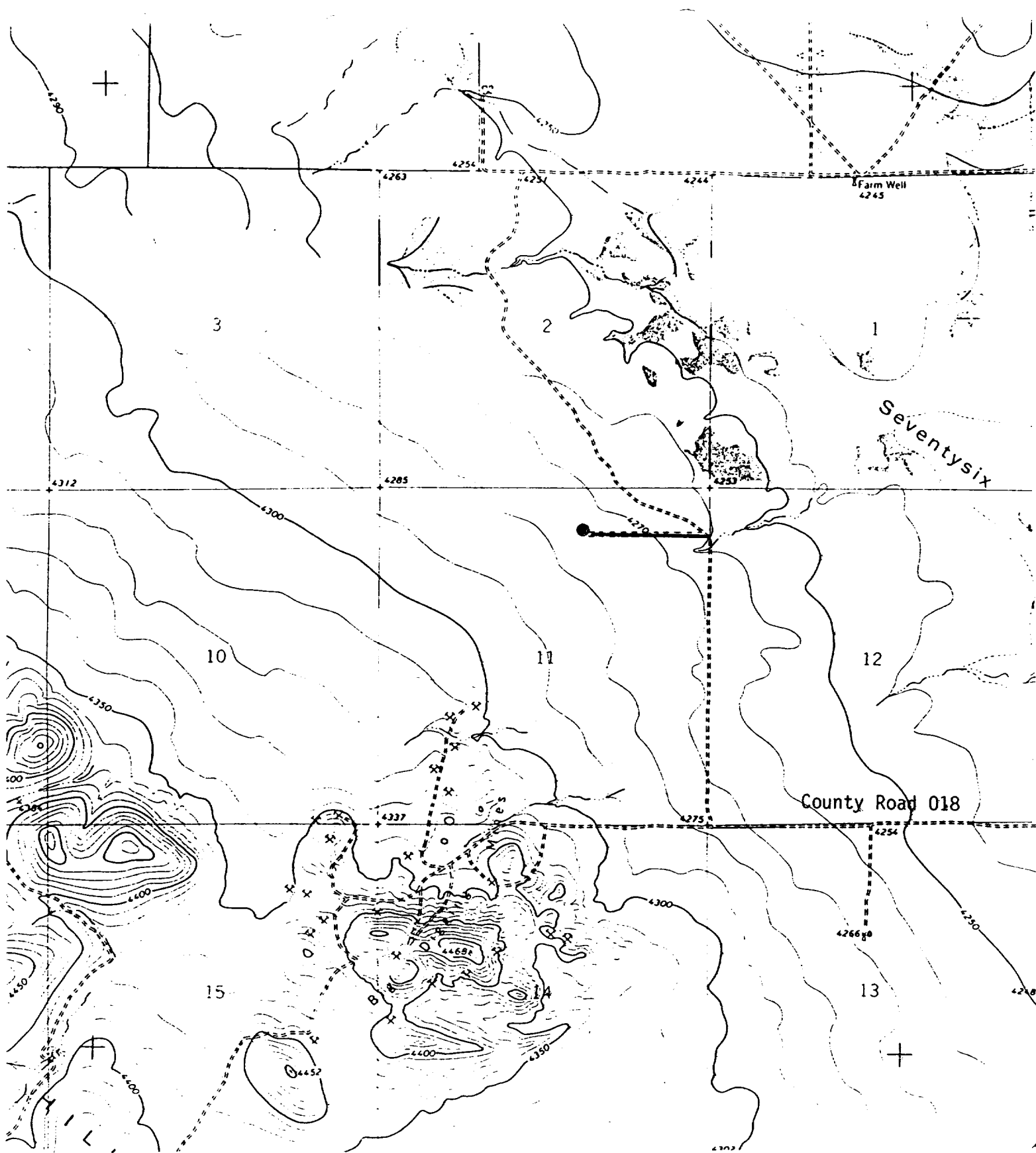
1. Geologic Name of Surface Formation: Alluvium
2. Drilling Tools & Associated Equipment: Conventional rotary drilling tools using mud for the circulation medium.
3. Proposed Drilling Depth: 10,000'
4. Estimated Geological Marker Tops:

Cretaceous	3270'	Montoya	7770'
Permian	4570'	El Paso	8270'
Pennsylvanian	5070'	Bliss	9370'
Mississippian	5270'	Granite Wash	9520'
Fusselman	6270'		
5. Mineral Bearing Formation: Gas bearing at 9430'.
6. Casing Program:

13 3/8" Casing - Set approximately 1000' of 13 3/8", 54.5#, K-55, ST&C casing. Cement with 550 sx 35-65 Lite Poz Class "H" cement followed by 300 sx Class "H" with 2% CaCl. Circulate cement.

9 5/8" Casing - Set approximately 4500' of 9 5/8", 36.0#, K-55 & S-80 casing. Cement with 540 sx 35-65 Lite Poz Class "H" cement, plus 400 sx Class "H", followed by second stage cement with 411 sx 35-65 Lite Poz plus 200 sx Class "H" cement.

5 1/2" Casing - Set to total depth, 5 1/2", 17#, K-55 & N-80, LT&C casing. Cement with 910 sx Class "H" cement followed by second stage cement with 400 sx Class "H" cement.
7. Pressure Control Equipment: Will install 3000 psi BOP after 13 3/8" casing is set. Sketch is attached.



New Road -----

Exhibit 'B'
Marshall R. Young Oil Co.
Bisbee Hills No. 1
660' FNL & 1980' FEL
Sec. 11, T26S, R11W
Luna County, N.M.

N
7

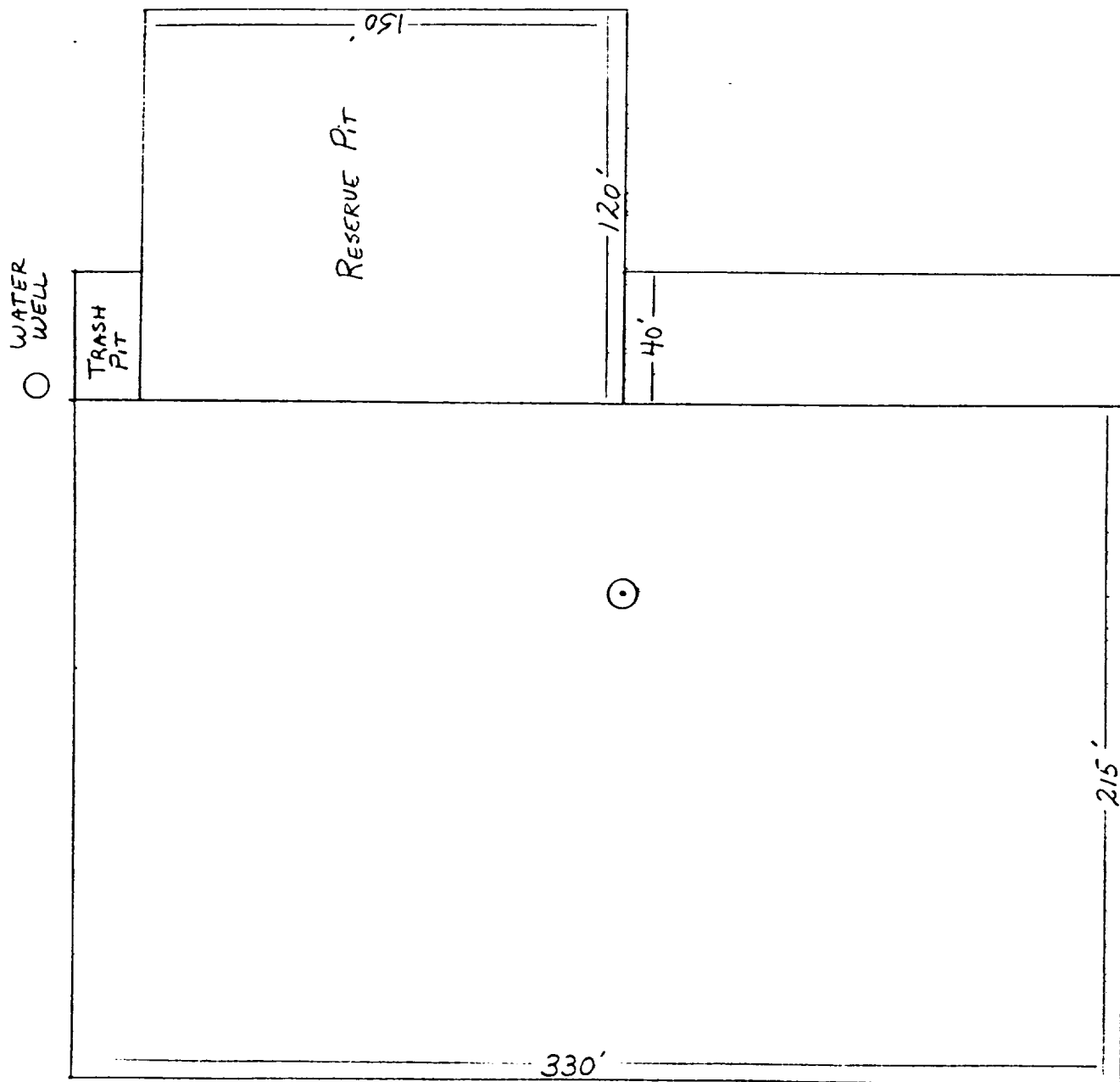
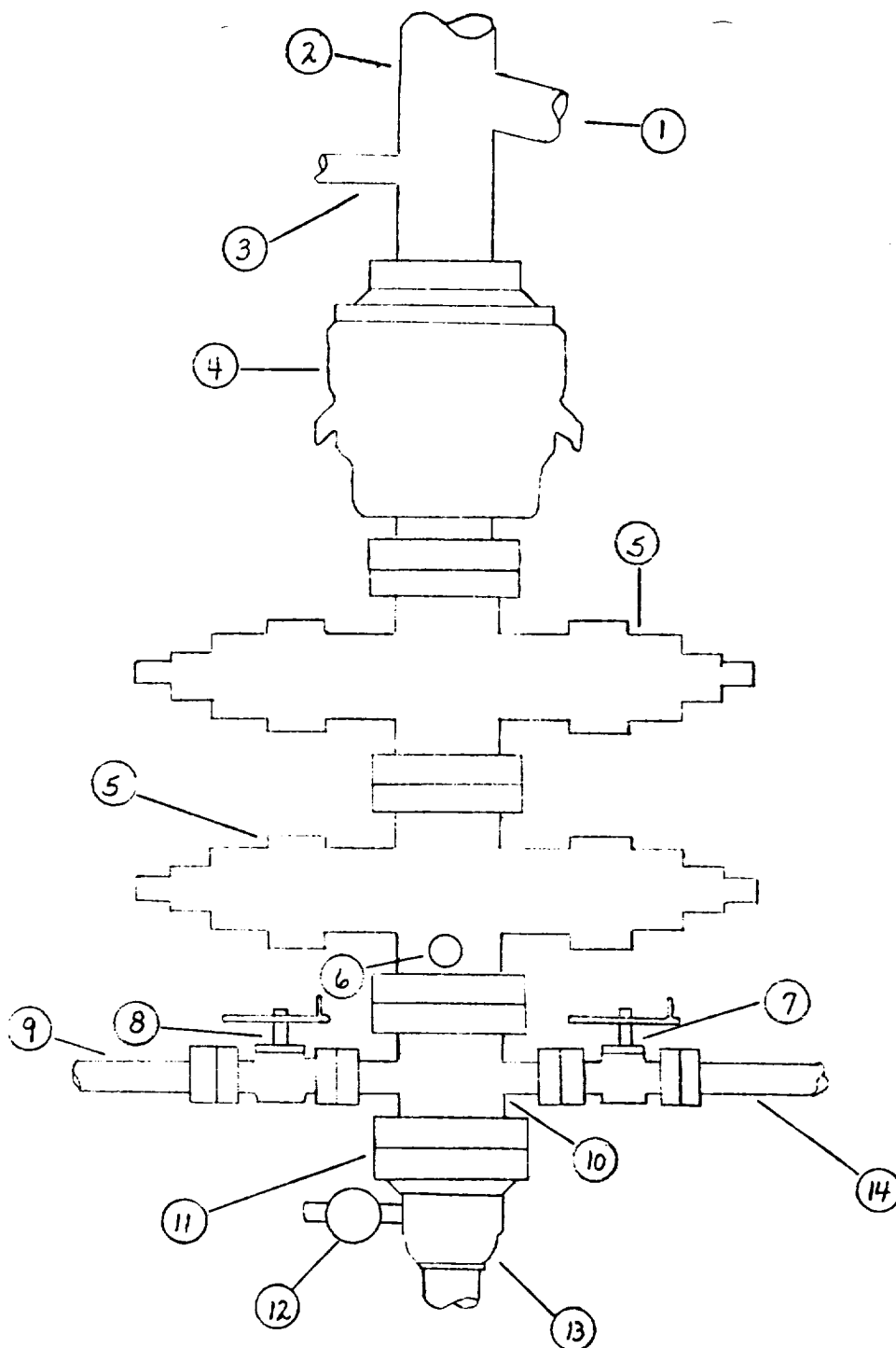


Exhibit 'C'
Marshall R. Young Oil Co.
Bisbee Hills No. 1
660' FNL & 1980' FEL
Sec. 11, T26S, R11W
Luna County, N.M.



- | | |
|-----------------------------|----------------------------|
| 1. Flowline | 8. Gate Valve |
| 2. Bell Nipple | 9. Kill Line |
| 3. Fill Up Line | 10. Drilling Spool |
| 4. Bag Preventer | 11. Flange |
| 5. Hydraulic Ram Preventers | 12. Gate Valve |
| 6. Side Outlets | 13. Casing Head |
| 7. Gate Valve | 14. Line to Choke Manifold |