

UNITED STATES
DEPARTMENT OF THE INTERIOR
GEOLOGICAL SURVEY

30-035-20005

APPLICATION FOR PERMIT TO DRILL, DEEPEN, OR PLUG BACK

1a. TYPE OF WORK

DRILL ☒DEEPEN ☐PLUG BACK ☐

b. TYPE OF WELL

OIL
WELL ☒GAS
WELL ☐

OTHER

SINGLE
ZONE ☒MULTIPLE
ZONE ☐

2. NAME OF OPERATOR

LELAND A. HODGES, TRUSTEE

3. ADDRESS OF OPERATOR

200 Throckmorton Street, Fort Worth, Texas 76102

4. LOCATION OF WELL (Report location clearly and in accordance with any State requirements.)*

At surface 1980 feet from westline and 470 feet from south line of
Section 23, T. 14 S., R. 10 E.
At proposed prod. zone
Same

14. DISTANCE IN MILES AND DIRECTION FROM NEAREST TOWN OR POST OFFICE*

4 miles East of Tularosa, New Mexico

15. DISTANCE FROM PROPOSED*

LOCATION TO NEAREST
PROPERTY OR LEASE LINE, FT.
(Also to nearest drlg. unit line, if any)

470 feet

16. NO. OF ACRES IN LEASE

1120.00

17. NO. OF ACRES ASSIGNED
TO THIS WELL

40

18. DISTANCE FROM PROPOSED LOCATION*

TO NEAREST WELL, DRILLING, COMPLETED,
OR APPLIED FOR, ON THIS LEASE, FT.

None

19. PROPOSED DEPTH

2900 feet

20. ROTARY OR CABLE TOOLS

Cable Tools

21. ELEVATIONS (Show whether DF, RT, GR, etc.)

5015 GL 5017 DF

22. APPROX. DATE WORK WILL START*

July 16, 1970

23.

PROPOSED CASING AND CEMENTING PROGRAM

SIZE OF HOLE	SIZE OF CASING	WEIGHT PER FOOT	SETTING DEPTH	QUANTITY OF CEMENT
18"	16"		100 feet	Ready mix to surface
13"	10 3/4"	32.75	+- 1000 feet	50 sacks

We propose to run additional casing as necessary to drill hole. We propose to install a control head on the 10 3/4" casing. If production is encountered we propose to cement 5 1/2" casing through pay zone. If a dry hole we propose to pull all pipe except 16" and set mud and cement plugs as instructed by U.S.G.S.

RECEIVED

JUL 15 1970

O. C. C.
ARTESIA, OFFICE

RECEIVED

JUL 13 1970

U.S. GEOLOGICAL SURVEY
ARTESIA, NEW MEXICO

IN ABOVE SPACE DESCRIBE PROPOSED PROGRAM: If proposal is to deepen or plug back, give data on present productive zone and proposed new productive zone. If proposal is to drill or deepen directionally, give pertinent data on subsurface locations and measured and true vertical depths. Give blowout preventer program, if any.

24.

SIGNED

Ben Doney

TITLE

Geologist

DATE

July 10, 1970

(This space for Federal or State office use)

PERMIT NO.

APPROVAL DATE

APPROVED BY
CONDITIONS OF APPROVAL, IF ANY:

TITLE IF OPERATION

DATE

APPROVED
JUL 14 1970
K. L. BECKMA
ACTING DISTRICT ENGINEERTHIS APPROVAL IS RESCINDED
IF NOT COMMENCED WITHIN 3 MONTHS.
EXPIRES OCT 14 1970
*See Instructions On Reverse Side

Instructions

General: This form is designed for submitting proposals to perform certain well operations, as indicated, on all types of lands and leases for appropriate action by either a Federal or a State agency, or both, pursuant to applicable Federal and/or State laws and regulations. Any necessary special instructions concerning the use of this form and the number of copies to be submitted, particularly with regard to local, area, or regional procedures and practices, either are shown below or will be issued by, or may be obtained from, the local Federal and/or State office.

Item 1: If the proposal is to redrill to the same reservoir at a different subsurface location or to a new reservoir, use this form with appropriate notations. Consult applicable State or Federal regulations concerning subsequent work proposals or reports on the well.

Item 4: If there are no applicable State requirements, locations on Federal or Indian land should be described in accordance with Federal requirements. Consult local State or Federal office for specific instructions.

Item 14: Needed only when location of well cannot readily be found by road from the land or lease description. A plat, or plats, separate or on this reverse side, showing the roads to, and the surveyed location of, the well, and any other required information, should be furnished when required by Federal or State agency offices.

Items 15 and 18: If well is to be, or has been directionally drilled, give distances for subsurface location of hole in any present or objective production zone.

Item 22: Consult applicable Federal or State regulations, or appropriate officials, concerning approval of the proposal before operations are started.

N MEXICO OIL CONSERVATION COMMISSION
WELL LOCATION AND ACREAGE DEDICATION PLAT

Form C-102
Supersedes C-128
Effective 1-1-65

All distances must be from the outer boundaries of the Section.

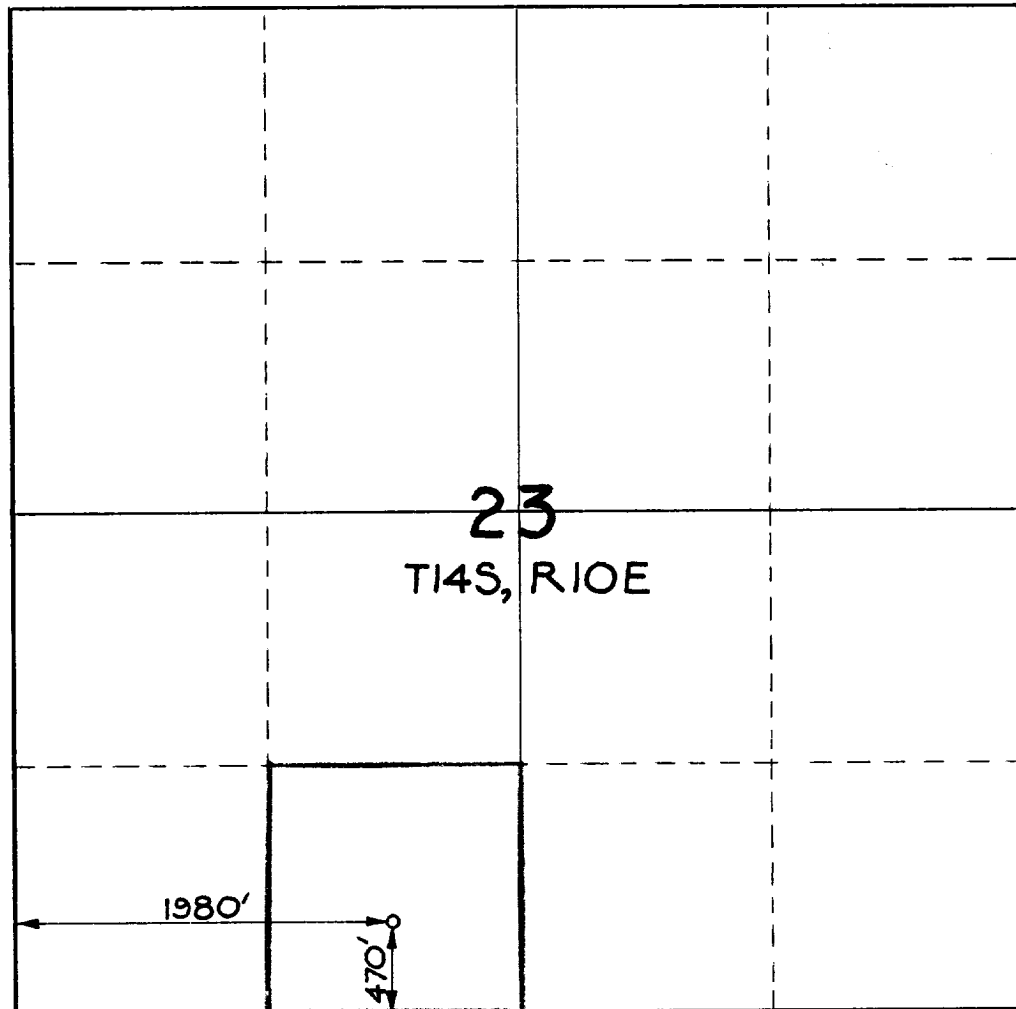
Operator Leland A. Hodges, Trustee			Lease Houston		Well No. 1
Unit Letter N	Section 23	Township 14 South	Range 10 East	County Otero	
Actual Footage Location of Well: 470 feet from the South line and 1980 feet from the West line Section 23					
Ground Level Elev. 5015	Producing Formation Pennsylvanian	Pool Wildcat	Dedicated Acreage: 40 Acres		

1. Outline the acreage dedicated to the subject well by colored pencil or hachure marks on the plat below.
2. If more than one lease is dedicated to the well, outline each and identify the ownership thereof (both as to working interest and royalty).
3. If more than one lease of different ownership is dedicated to the well, have the interests of all owners been consolidated by communitization, unitization, force-pooling, etc?

☐ Yes ☐ No If answer is "yes:" type of consolidation JUL 15 1970

If answer is "no," list the owners and tract descriptions which have actually been consolidated. (Use reverse side of this form if necessary.) O. C. C.

No allowable will be assigned to the well until all interests have been consolidated (by communitization, unitization, forced-pooling, or otherwise) or until a non-standard unit, eliminating such interests, has been approved by the Commission.



CERTIFICATION

I hereby certify that the information contained herein is true and complete to the best of my knowledge and belief.

Name Ben Donegan
Position Geologist
Company Leland A. Hodges, Trustee

Date July 10, 1970

RECEIVED
I hereby certify that the well location shown on this plat was plotted from field notes of actual surveys made by me or under my supervision and that the same is true to the best of my knowledge and belief.

Date Surveyed July 7, 1970

Registered Professional Engineer and/or Land Surveyor

Quinton E. Daniel
Certificate No. **1359**

0 330 660 990 1320 1650 1980 2310 2640 2970 3300 3630 3960 4290 4620 4950 5280 5610 5940 6270 6600