

UNITED STATES
DEPARTMENT OF THE INTERIOR
GEOLOGICAL SURVEY

32-035-20006

APPLICATION FOR PERMIT TO DRILL, DEEPEN, OR PLUG BACK

1a. TYPE OF WORK

DRILL ☒DEEPEN ☐PLUG BACK ☐

b. TYPE OF WELL

OIL
WELL ☒GAS
WELL ☐

OTHER

SINGLE
ZONE ☒MULTIPLE
ZONE ☐

2. NAME OF OPERATOR

TEXACO INC.

3. ADDRESS OF OPERATOR

P. O. Box 3109

MIDLAND, TEXAS 79701

4. LOCATION OF WELL (Report location clearly and in accordance with any State requirements.)*

At surface

*1980' FSL & 1980' FEL, Section 30, T-18-S, R-10-E

At proposed prod. zone

14. DISTANCE IN MILES AND DIRECTION FROM NEAREST TOWN OR POST OFFICE*

8 miles northeast of Escondida, New Mexico

15. DISTANCE FROM PROPOSED*

LOCATION TO NEAREST
PROPERTY OR LEASE LINE, FT.
(Also to nearest drlg. unit line, if any)

1980'

16. NO. OF ACRES IN LEASE

2440

17. NO. OF ACRES ASSIGNED
TO THIS WELL

40

18. DISTANCE FROM PROPOSED LOCATION*
TO NEAREST WELL, DRILLING, COMPLETED,
OR APPLIED FOR, ON THIS LEASE, FT.

1st well

19. PROPOSED DEPTH

7500'

20. ROTARY OR CABLE TOOLS

Rotary

21. ELEVATIONS (Show whether DF, RT, GR, etc.)

4043 GR

22. APPROX. DATE WORK WILL START*

At once

23.

PROPOSED CASING AND CEMENTING PROGRAM

| SIZE OF HOLE | SIZE OF CASING | WEIGHT PER FOOT | SETTING DEPTH | QUANTITY OF CEMENT |
|--------------|----------------|--------------------|---------------|--------------------------------|
| 26" | 20" | 94# | 200' | *700 Sx. (300% to circulate) |
| 17 1/2" | 10 3/4" | 32.75# & 40.50# | 1,800' | **2600 Sx. (250% to circulate) |
| 9 7/8" | 7 5/8" | 26.4# | 6,200' | ***1000 Sx. (200% to tie back) |
| 6 3/4" | 4 1/2" | 9.5#, 10.5#, 11.6# | 7,500' | ****320 Sx. (150% to tie back) |

*Surface-700 Sx. Class "C" w/1/4#/Sx. Flocele, 1% CaCl, 14.8#/gal. (Cement must circulate) 300% to circulate. **1st Intermediate-2400 Sx. TLW w/5# gilsonite per Sx., 12#/gal., followed by 200 Sx. Class "C", 14.8#/gal. (250% to circulate). ***2nd Intermediate-800 Sx. TLW w/5# per Sx. gilsonite, 12#/gal., followed by 200 Sx. Class "C" 14.8#/gal. (200% to tie back to 11 3/4"). Not required to tie back. ****Prod.-320 Sx. Class "C" 14.8#/gal. (150% to tie back).

COMPLETION PROGRAM RECEIVED

Completion will be through perforations with acid treatment. SEP 3 1970

O. C. C.
ARTESIA, OFFICERECEIVED
SEP-11970
U. S. GEOLOGICAL SURVEY
ARTESIA, NEW MEXICO

IN ABOVE SPACE DESCRIBE PROPOSED PROGRAM: If proposal is to deepen or plug back, give data on present productive zone and proposed new productive zone. If proposal is to drill or deepen directionally, give pertinent data on subsurface locations and measured and true vertical depths. Give blowout preventer program, if any.

24.

SIGNED

J. J. Velten

TITLE Division Civil Engineer

DATE August 31, 1970

(This space for Federal or State office use)

PERMIT NO.

APPROVED BY

CONDITIONS OF APPROVAL, IF ANY:

THIS APPROVAL IS RESCINDED IF OPERATIONS
ARE NOT COMMENCED WITHIN 3 MONTHS.
EXPIRES DEC 2 - 1970

DATE

APPROVED
AUG 2 1970

R. L. BECKMA

ACTING DISTRICT ENGINEER

*See Instructions On Reverse Side

Instructions

General: This form is designed for submitting proposals to perform certain well operations, as indicated, on all types of lands and leases for appropriate action by either a Federal or a State agency, or both, pursuant to applicable Federal and/or State laws and regulations. Any necessary special instructions concerning the use of this form and the number of copies to be submitted, particularly with regard to local, area, or regional procedures and practices, either are shown below or will be issued by, or may be obtained from, the local Federal and/or State office.

Item 1: If the proposal is to redrill to the same reservoir at a different subsurface location or to a new reservoir, use this form with appropriate notations. Consult applicable State or Federal regulations concerning subsequent work proposals or reports on the well.

Item 4: If there are no applicable State requirements, locations on Federal or Indian land should be described in accordance with Federal requirements. Consult local State or Federal office for specific instructions.

Item 14: Needed only when location of well cannot readily be found by road from the land or lease description. A plat, or plats, separate or on this reverse side, showing the roads to, and the surveyed location of, the well, and any other required information, should be furnished when required by Federal or State agency offices.

Items 15 and 18: If well is to be, or has been directionally drilled, give distances for subsurface location of hole in any present or objective production zone.

Item 22: Consult applicable Federal or State regulations, or appropriate officials, concerning approval of the proposal before operations are started.

NEW MEXICO OIL CONSERVATION COMMISSION
WELL LOCATION AND ACREAGE DEDICATION PLAT

Form C-102
Supersedes C-128
Effective 1-1-65

All distances must be from the outer boundaries of the Section.

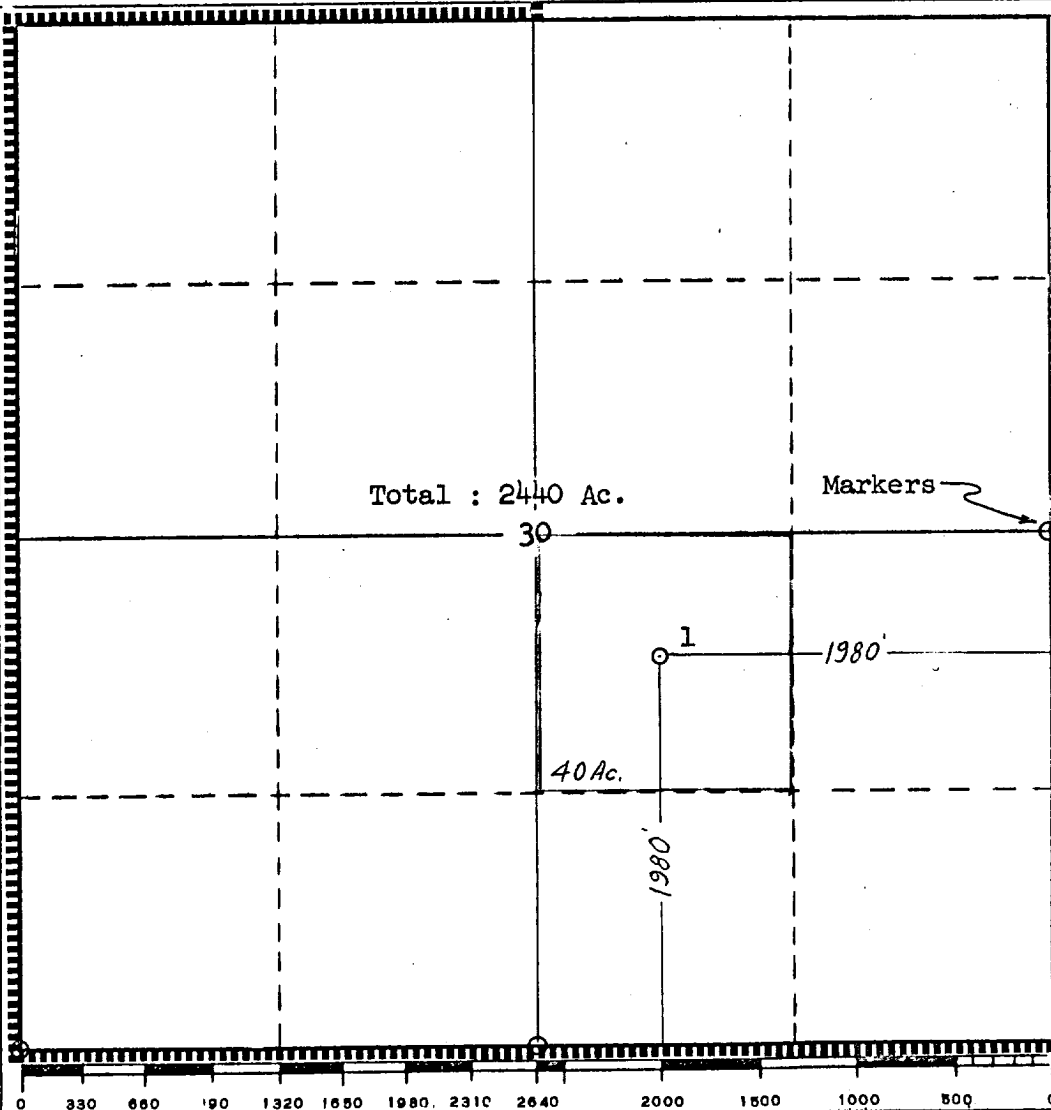
| | | | | | |
|--|---|-----------------------------|---|------------------------|----------------------|
| Operator TEXACO Inc. | | | Lease Federal (USA) "F" NCT 1 | | Well No. 1 |
| Unit Letter J | Section 30 | Township 18 South | Range 10 East | County Otero | |
| Actual Footage Location of Well: 1980' feet from the South line and 1980' feet from the East line Sec 30 | | | | | |
| Ground Level Elev: 4043' | Producing Formation Lower Penn. | Pool Wildcat | Dedicated Acreage 40 Acres | | |

1. Outline the acreage dedicated to the subject well by colored pencil or hachure marks on the plat below.
2. If more than one lease is dedicated to the well, outline each and identify the ownership thereof (both as to working interest and royalty).
3. If more than one lease of different ownership is dedicated to the well, have the interests of all owners been consolidated by communitization, unitization, force-pooling, etc?

☐ Yes ☐ No If answer is "yes," type of consolidation _____

If answer is "no," list the owners and tract descriptions which have actually been consolidated. (Use reverse side of this form if necessary.) _____

No allowable will be assigned to the well until all interests have been consolidated (by communitization, unitization, forced-pooling, or otherwise) or until a non-standard unit, eliminating such interests, has been approved by the Commission.



| | |
|---|--|
| CERTIFICATION | |
| I hereby certify that the information contained herein is true and complete to the best of my knowledge and belief. | |
| <i>J. J. Velten</i> | |
| Name J. J. Velten | |
| Position Division Civil Engineer | |
| Company TEXACO Inc. | |
| Date 8/31/70 | |
| <div style="text-align: center;"> RECEIVED SEP 1 1970 U.S. GEOLOGICAL SURVEY ALBUQUERQUE </div> | |
| I hereby certify that the well location shown on this plat was plotted from field notes of actual surveys made by me or under my supervision, and that the same is true and correct to the best of my knowledge and belief. | |
| Date Surveyed 8/29/70 | |
| Registered Professional Engineer and/or Land Surveyor <i>J. J. Velten</i> | |
| Certificate No. 8174 | |