

UNITED STATES
DEPARTMENT OF THE INTERIOR
GEOLOGICAL SURVEY

APPLICATION FOR PERMIT TO DRILL, DEEPEN, OR PLUG BACK

1a. TYPE OF WORK

DRILL ☒

DEEPEN ☐

PLUG BACK ☐

b. TYPE OF WELL

OIL WELL ☐

GAS WELL ☐

OTHER

SINGLE ZONE ☒

MULTIPLE ZONE ☐

2. NAME OF OPERATOR

Houston Oil & Minerals Corporation

3. ADDRESS OF OPERATOR

242 The Main Building, Houston, Texas 77002

4. LOCATION OF WELL (Report location clearly and in accordance with any State requirements.)*

At surface

660' FEL and 660' FSL of Section

At proposed prod. zone

14. DISTANCE IN MILES AND DIRECTION FROM NEAREST TOWN OR POST OFFICE*

5 miles East of Tularosa, New Mexico

15. DISTANCE FROM PROPOSED*

LOCATION TO NEAREST PROPERTY OR LEASE LINE, FT. (Also to nearest drlg. unit line, if any)

660'

16. NO. OF ACRES IN LEASE

1,880

17. NO. OF ACRES ASSIGNED TO THIS WELL

18. DISTANCE FROM PROPOSED LOCATION* TO NEAREST WELL, DRILLING, COMPLETED, OR APPLIED FOR, ON THIS LEASE, FT.

-

19. PROPOSED DEPTH

4,000'

20. ROTARY OR CABLE TOOLS

Rotary

21. ELEVATIONS (Show whether DF, RT, GR, etc.)

NA

22. APPROX. DATE WORK WILL START*

May 25, 1972

23.

PROPOSED CASING AND CEMENTING PROGRAM *

SIZE OF HOLE	SIZE OF CASING	WEIGHT PER FOOT	SETTING DEPTH	QUANTITY OF CEMENT
9 7/8"	7"	20#	900'	400 Sx
6 1/8"	4 1/2"	9.5#	4,000'	200 Sx

Mud Program:

0 - 900': Water base mud, Weight 9#/gal

900' - TD: Water base mud, weight 10#/gal

BOP Program:

One hydraulically operated preventer with pipe rams.

Conductor Casing:

1 joint of conductor casing will be run and cemented.

RECEIVED
MAY 24 1972
U. S. GEOLOGICAL SURVEY
ARTESIA, NEW MEXICO

IN ABOVE SPACE DESCRIBE PROPOSED PROGRAM: If proposal is to deepen or plug back, give data on present productive zone and proposed new productive zone. If proposal is to drill or deepen directionally, give pertinent data on subsurface locations and measured and true vertical depths. Give blowout preventer program, if any.

24.

SIGNED

R. F. Baker

TITLE

Engineer

DATE

5/22/1972

(This space for Federal or State office use)

PERMIT NO.

APPROVED DATE

APPROVED BY
CONDITIONS OF APPROVAL, IF ANY:

MAY 25 1972

R. L. BECKMAN
ACTING DISTRICT ENGINEER

TITLE IF OPERATIONS

ARE NOT COMMENCED WITHIN 3 MONTHS.

DATE

THIS APPROVAL IS RE-CHARGED
*See Instructions On Reverse Side

EXPIRES

MEXICO OIL CONSERVATION COMMISS
WELL LOCATION AND ACREAGE DEDICATION PLAT

Form C-102
Supersedes C-128
Effective 1-1-65

MAY 26 1972

All distances must be from the outer boundaries of the Section.

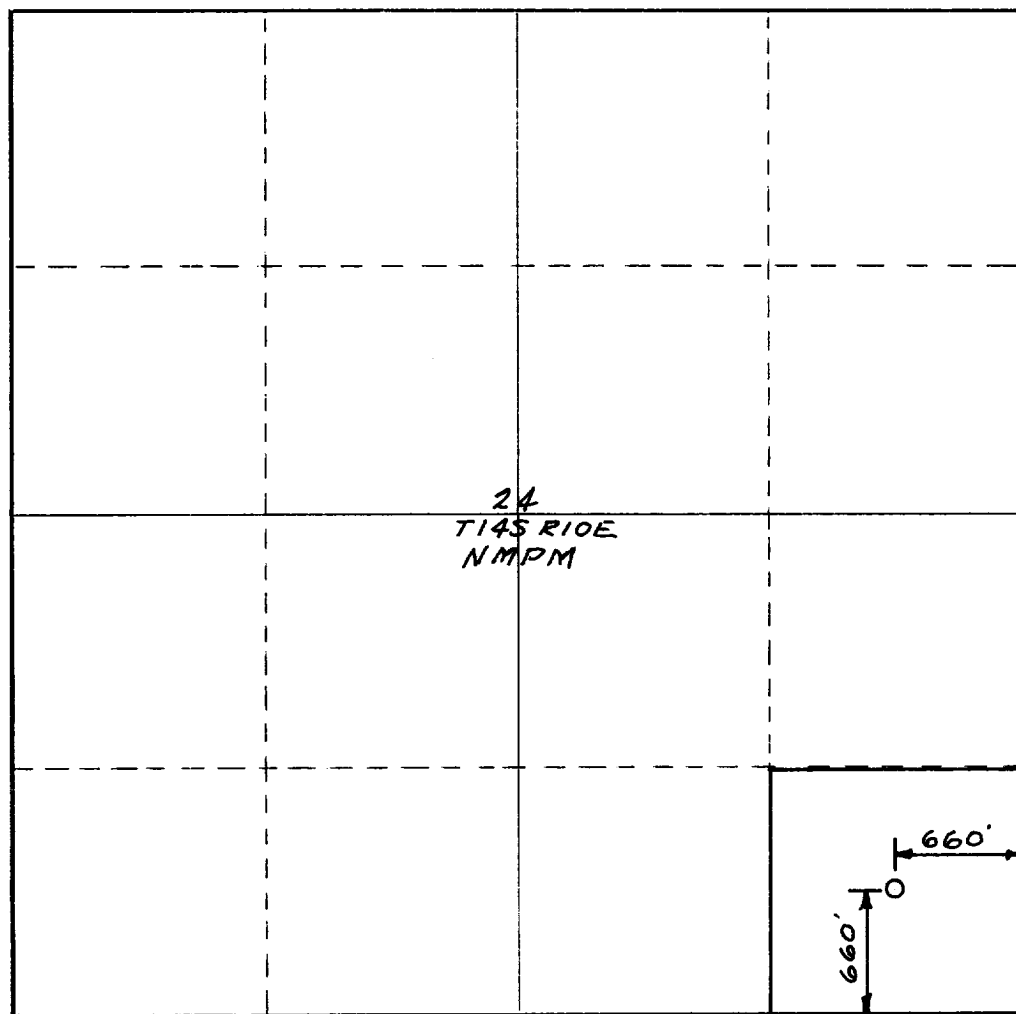
Operator Houston Oil and Minerals Corp.			Lease Federal "A"		Well No. 1
Unit Letter P	Section 24	Township 14 South	Range 10 East	County Otero	
Actual Footage Location of Well: 660 feet from the South line and 660 feet from the East line Section 24					
Ground Level Elev. 5312	Producing Formation <i>Plum</i>	Pool <i>Wildcat</i>	Dedicated Acreage: 40 Acres		

1. Outline the acreage dedicated to the subject well by colored pencil or hachure marks on the plat below.
2. If more than one lease is dedicated to the well, outline each and identify the ownership thereof (both as to working interest and royalty).
3. If more than one lease of different ownership is dedicated to the well, have the interests of all owners been consolidated by communitization, unitization, force-pooling, etc?

☐ Yes ☐ No If answer is "yes," type of consolidation _____

If answer is "no," list the owners and tract descriptions which have actually been consolidated. (Use reverse side of this form if necessary.) _____

No allowable will be assigned to the well until all interests have been consolidated (by communitization, unitization, forced-pooling, or otherwise) or until a non-standard unit, eliminating such interests, has been approved by the Commission.



CERTIFICATION

I hereby certify that the information contained herein is true and complete to the best of my knowledge and belief.

R.H. Baker

Name

Engineer

Position

Houston Oil & Minerals Corp.

Company

May 22, 1972

Date

RECEIVED

I hereby certify that the well location shown on this plat is based from field notes of actual surveys made by me or under my supervision, and that the same is true and correct to the best of my knowledge and belief.

5/18/72

Date Surveyed

R.E. Daniel

Registered Professional Engineer and/or Land Surveyor

1359

Certificate No.

