

**MEXICO OIL CONSERVATION COMMISSION
WELL LOCATION AND ACREAGE DEDICATION PLAT**

Form C-102
Supersedes C-128
Effective 1-1-85

All distances must be from the outer boundaries of the Section.

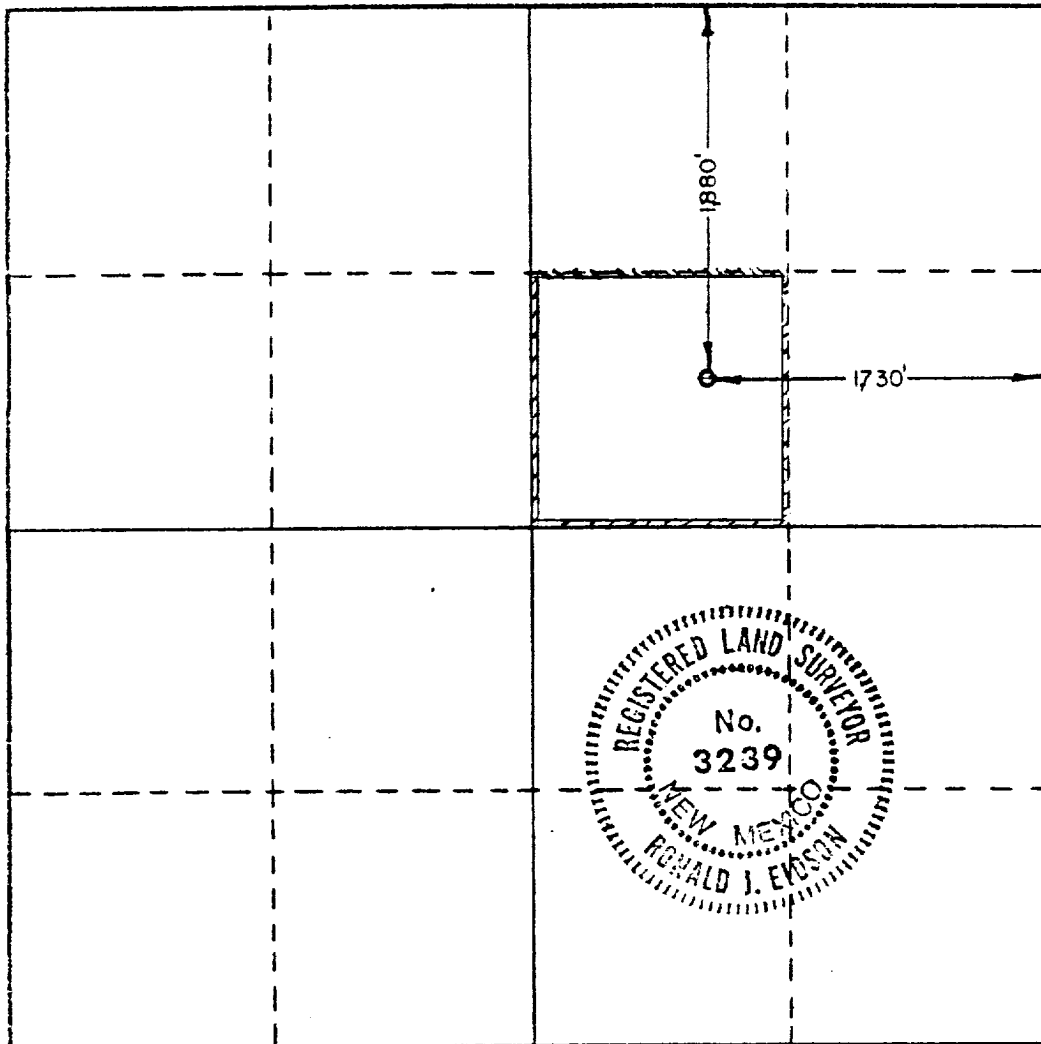
Operator Marathon Oil Company			Lease Mesa Verde Ranch		Well No. 1
Unit Letter G	Section 35	Township 18 South	Range 14 East	County Otero	
Actual Footage Location of Well: <div style="display: flex; justify-content: space-between;"> 1880 feet from the North line and 1730 feet from the East line </div>					
Ground Level Elev. 7000.3	Producing Formation		Pool Wildcat	Dedicated Acreage: 40 Acres	

1. Outline the acreage dedicated to the subject well by colored pencil or hatchure marks on the plat below.
2. If more than one lease is dedicated to the well, outline each and identify the ownership thereof (both as to working interest and royalty).
3. If more than one lease of different ownership is dedicated to the well, have the interests of all owners been consolidated by communitization, unitization, force-pooling, etc?

☐ Yes ☐ No If answer is "yes," type of consolidation _____

If answer is "no," list the owners and tract descriptions which have actually been consolidated. (Use reverse side of this form if necessary.) _____

No allowable will be assigned to the well until all interests have been consolidated (by communitization, unitization, forced-pooling, or otherwise) or until a non-standard unit, eliminating such interests, has been approved by the Commission.



CERTIFICATION

I hereby certify that the information contained herein is true and complete to the best of my knowledge and belief.

Ralph M. DePauw
Name

Ralph M. DePauw

Position

Production Engineer

Company

Marathon Oil Company

Date

11-16-81

I hereby certify that the well location shown on this plat was plotted from field notes of actual surveys made by me or under my supervision, and that the same is true and correct to the best of my knowledge and belief.

Date Surveyed

11-13-1981

Registered Professional Engineer and/or Land Surveyor

Ronald J. Eidson

Certificate No. **JOHN W. VEST 676**
PATRICK A. ROMERO 6865
Ronald J. Eidson 3239

0 330 660 990 1320 1650 1980 2310 2640 2970 3300 3630 3960 4290 4620 4950 5280 5610 5940 6270 6600