

UNITED STATES  
DEPARTMENT OF THE INTERIOR  
GEOLOGICAL SURVEY

NM OIL CONS. COMMISSION

Drawer DD

Artesia, NM

5. LEASE DESIGNATION AND SERIAL NO.

SDM-27440

6. IF INDIAN, ALLOTTEE OR TRIBE NAME

7. UNIT AGREEMENT NAME

8. FARM OR LEASE NAME

Federal 23

9. WELL NO.

10. FIELD AND POOL, OR WILDCAT

Wildcat - Mesa Verde

11. SEC., T., R., M., OR BLE.

AND SURVEY OR AREA

Sec. 23-T15S-R2W

N.M.P.M.

12. COUNTY OR PARISH

Sierra N.M.

1a. TYPE OF WORK

DRILL ☐DEEPEN ☐PLUG BACK ☐

b. TYPE OF WELL

OIL  
WELL ☒GAS  
WELL ☐OTHER ☐

2. NAME OF OPERATOR

OVERTHRUST RESOURCES, LTD. ✓

3. ADDRESS OF OPERATOR

ATTN: Dick Rollins

3270 One Denver Place, 999 Eighteenth Str., Denver, CO 80202

4. LOCATION OF WELL (Report location clearly and in accordance with any State requirements.)

At surface

560' FSL,

660' FEL

At proposed prod. zone

Same

14. DISTANCE IN MILES AND DIRECTION FROM NEAREST TOWN OR POST OFFICE\*

15 miles Southeast of Truth or Consequences, New Mexico

15. DISTANCE FROM PROPOSED\*

LOCATION TO NEAREST  
PROPERTY OR LEASE LINE, FT.  
(Also to nearest drlg. unit line, if any)

560'

16. NO. OF ACRES IN LEASE

320

17. NO. OF ACRES ASSIGNED

TO THIS WELL

40

18. DISTANCE FROM PROPOSED LOCATION\*  
TO NEAREST WELL, DRILLING, COMPLETED,  
OR APPLIED FOR, ON THIS LEASE, FT.

100'

19. PROPOSED DEPTH

2650'

20. ROTARY OR CABLE TOOLS

Rotary

21. ELEVATIONS (Show whether DF, RT, GR, etc.)

4667' G.L.

22. APPROX. DATE WORK WILL START\*

12-15-82

23.

## PROPOSED CASING AND CEMENTING PROGRAM

| SIZE OF HOLE | SIZE OF CASING | WEIGHT PER FOOT | SETTING DEPTH | QUANTITY OF CEMENT    |
|--------------|----------------|-----------------|---------------|-----------------------|
| 12 1/4"      | 8 5/8"         | 24.0            | 350'          | 295 Cu. Ft. CIRCULATE |
| 7 7/8"       | 4 1/2"         | 10.50           | 2650'         | 904 Cu. Ft.           |

All producing intervals in Gallup Formation will be perforated and stimulated as necessary.

## EXHIBITS

"A" Location and Elevation Plat.  
"B" Ten Point Compliance Program.  
"C" Blowout Preventer Diagram.  
"D" Multi-Point Requirements for A.P.D.

"E" Access Road to Location.  
"F" Radius Map of Field.  
"G" Drill Rig Layout.  
"H" Fracturing Program Layout.  
"I" Location Profile.

The gas from this well is not committed.

The SE/4 SE/4, Section 23 is dedicated to this well.

IN ABOVE SPACE DESCRIBE PROPOSED PROGRAM: If proposal is to deepen or plug back, give data on present productive zone and proposed new productive zone. If proposal is to drill or deepen directionally, give pertinent data on subsurface locations and measured and true vertical depths. Give blowout preventer program, if any.

24. FOR: OVERTHRUST RESOURCES, INC. ORIGINAL SIGNED BY President, Walsh Eng. & Production Corp.  
SIGNED Ewell N. Walsh TITLE DATE 11-19-82  
(This space for Federal or State office use)

PERMIT NO.

APPROVED

APPROVAL DATE

(ORIG. SGD.) DAVID R. GLASS

APPROVED BY

TITLE

DATE

CONDITIONS OF APPROVAL, IF ANY

DEC 27 1982

JAMES A. GILLHAM  
DISTRICT SUPERVISOR

See Instructions On Reverse Side

Posted 12/14/82  
SD-12/14/82  
1-14-83

Form C-107  
Revised 10-1-78

All distances must be from the outer boundaries of the Section.

3950



EXHIBIT "B"

TEN-POINT COMPLIANCE PROGRAM

OF NTL-6 APPROVAL OF OPERATIONS

Attached to Form 9-331C      OVERTHRUST RESOURCES, Ltd.  
Federal 23, No. 1  
560' FSL, 660' Fel, Section 23-T15S-R2W  
Sierra County, New Mexico

1. The Geologic Surface Formation

McRae Formation

2. Estimated Tops of Important Geologic Markers

Mesa Verde - 1170'  
Upper Mancos - 1750'  
Gallup - 2305'  
Lower Mancos - 2607'

3. Estimated Depths of Anticipated Water, Oil, Gas or Minerals

Mesa Verde - 1170', Water  
Gallup - 2305', Gas and Oil

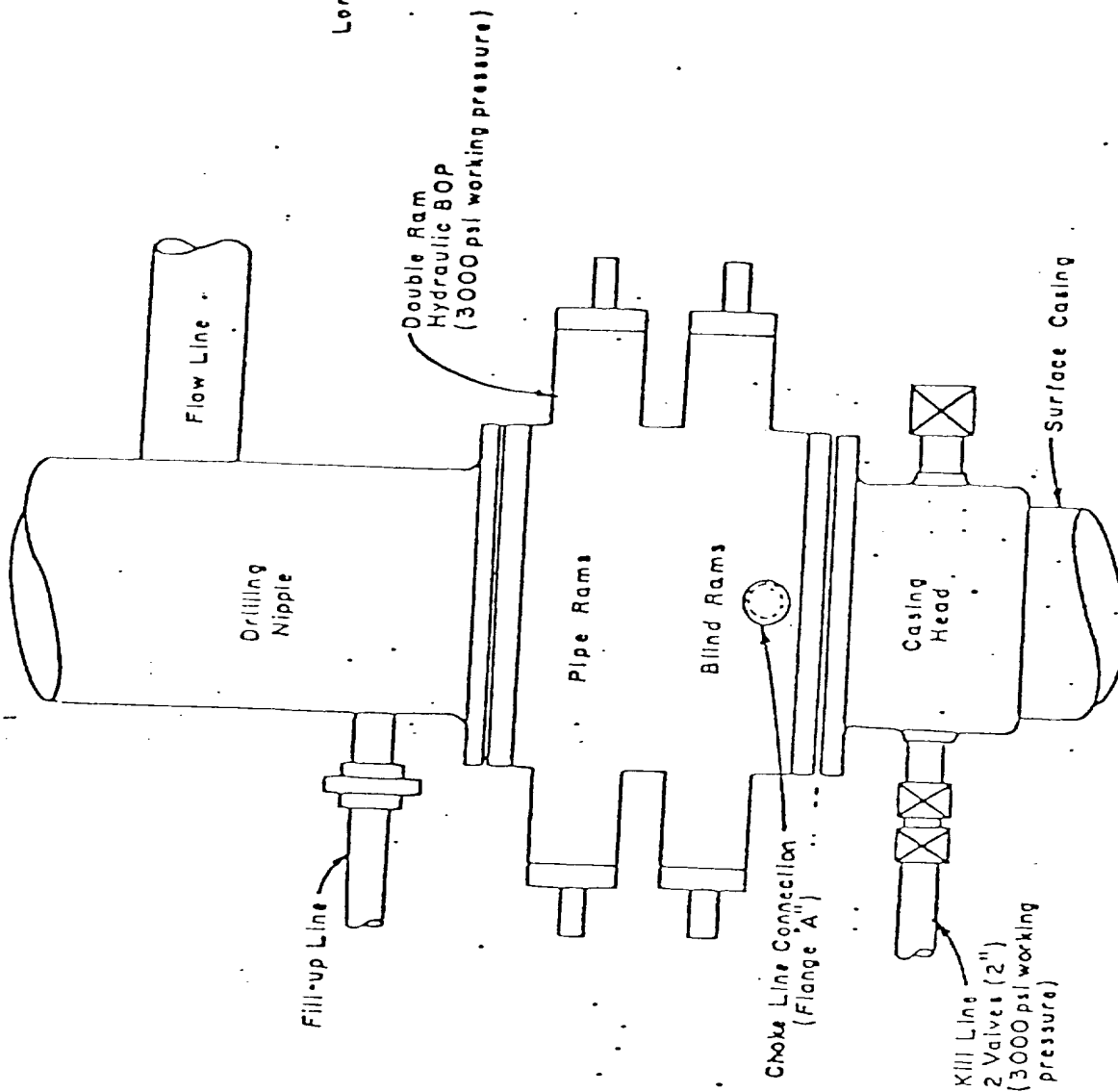
4. The Proposed Casing Program

| <u>Hole<br/>Size</u> | <u>Interval</u> | <u>Section<br/>Length</u> | <u>Size<br/>(OD)</u>       | <u>Weight, Grade<br/>and Joint</u> | <u>New<br/>or<br/>Used</u> |
|----------------------|-----------------|---------------------------|----------------------------|------------------------------------|----------------------------|
| 12 $\frac{1}{4}$ "   | 0-350           | 350'                      | 8-5/8"                     | 24# K-55 8 round ST&C              | New                        |
| 7-7/8"               | 350'-2650'      | 2300'                     | 4- $\frac{1}{2}$ ", 10.50, | K-55 8 round ST&C                  | New                        |

# Blowout Preventer Diagram

EXHIBIT "C"

OVERTHRUST RESOURCES, Ltd.  
FEDERAL 23, NO. 1  
560'FSL, 660'FEL Sec. 23-T15S-R2W  
Sierra County, New Mexico



Flanged Cross with Pressure Gauge in Outside Opening

Long Positive Choke

2" Plug Valves 2000 CWP

Positive Choke or Variable Choke

Flange "A"

PLAN VIEW - CHOKER MANIFOLD

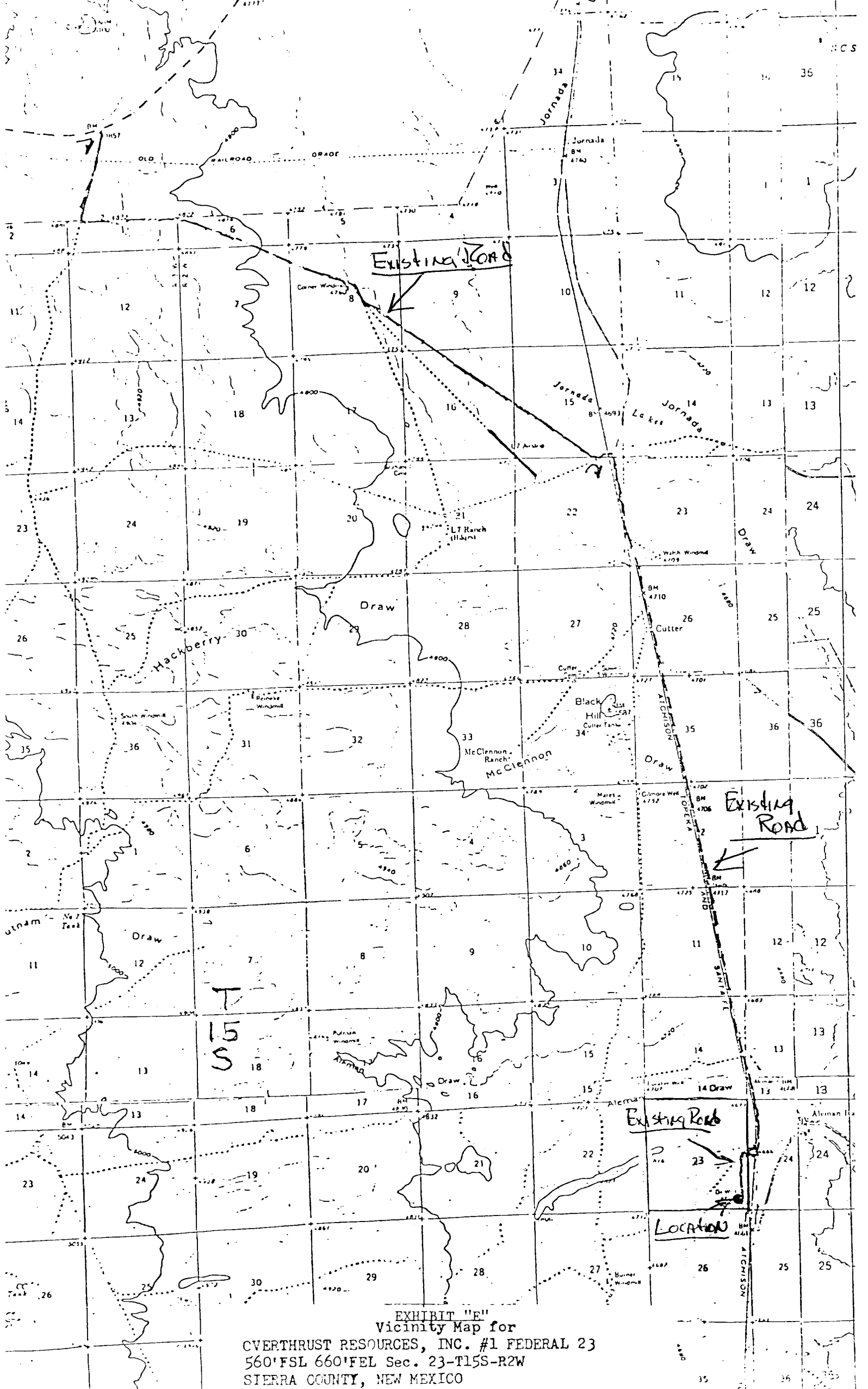


EXHIBIT "E"  
Vicinity Map for  
CVERTHRUST RESOURCES, INC. #1 FEDERAL 23  
560' FSL 660' FEL Sec. 23-T15S-R2W  
SIERRA COUNTY, NEW MEXICO

# EXHIBIT "G"

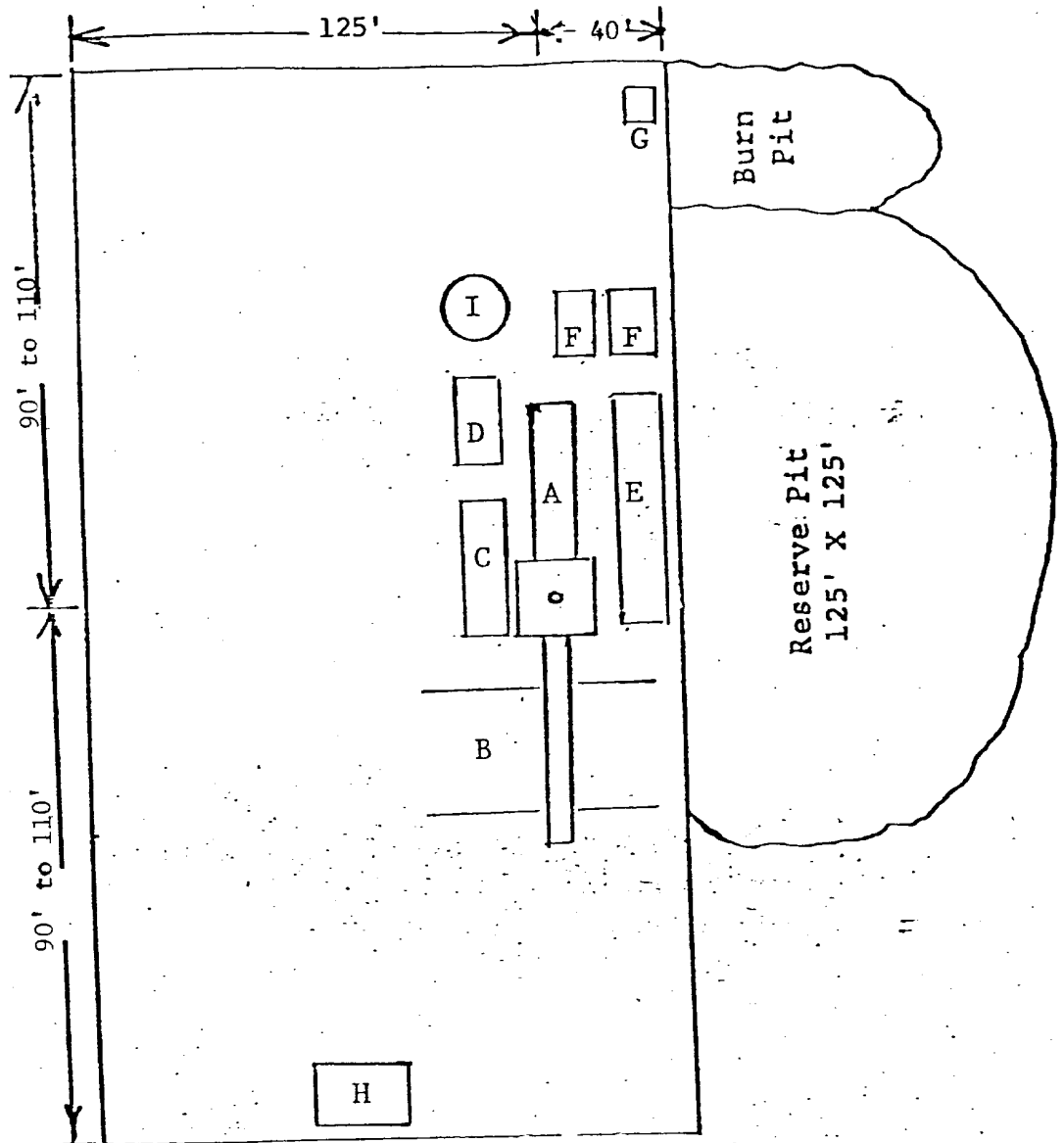
## Drill Rig Layout

OVERTHRUST RESOURCES, Ltd.

FEDERAL 23, NO.1

560' FSL, 660' FEL, Sec. 23-T15S-R2W

SIERRA COUNTY, NEW MEXICO



- A - Rig
- B - Piperacks
- C - Doghouse and Water Tank
- D - Fuel
- E - Mud Pit
- F - Pumps
- G - Toilet
- H - Trailer House
- I - Oil Storage

Walsh ENGINEERING & PRODUCTION

EXHIBIT "I"

