

**N. MEXICO OIL CONSERVATION COMMISSION
WELL LOCATION AND ACREAGE DEDICATION PLAT**

Form C-102
Supersedes C-128
Effective 1-1-65

All distances must be from the outer boundaries of the Section.

Operator Jack L. McEllean ✓			Lease Federal-Lisa *H* Federal		Well No. 30
Unit Letter 0	Section 13	Township 15 South	Range 29 East	County Chaves	
Actual Footage Location of Well: 330 feet from the South line and 1650 feet from the East line					
Ground Level Elev. 3950	Producing Formation Queen		Pool Ant. Sulimar Queen		Dedicated Acreage: 40 Acres

1. Outline the acreage dedicated to the subject well by colored pencil or hatchure marks on the plat below.
2. If more than one lease is dedicated to the well, outline each and identify the ownership thereof (both as to working interest and royalty).
3. If more than one lease of different ownership is dedicated to the well, have the interests of all owners been consolidated by communitization, unitization, force-pooling, etc?

☐ Yes ☐ No If answer is "yes," type of consolidation _____

If answer is "no," list the owners and tract descriptions which have actually been consolidated. (Use reverse side of this form if necessary.) _____

No allowable will be assigned to the well until all interests have been consolidated (by communitization, unitization, forced-pooling, or otherwise) or until a non-standard unit, eliminating such interests, has been approved by the Commission.

RECEIVED

OCT 11 1968

**D. C. C.
ARTESIA OFFICE
CERTIFICATION**

I hereby certify that the information contained herein is true and complete to the best of my knowledge and belief.

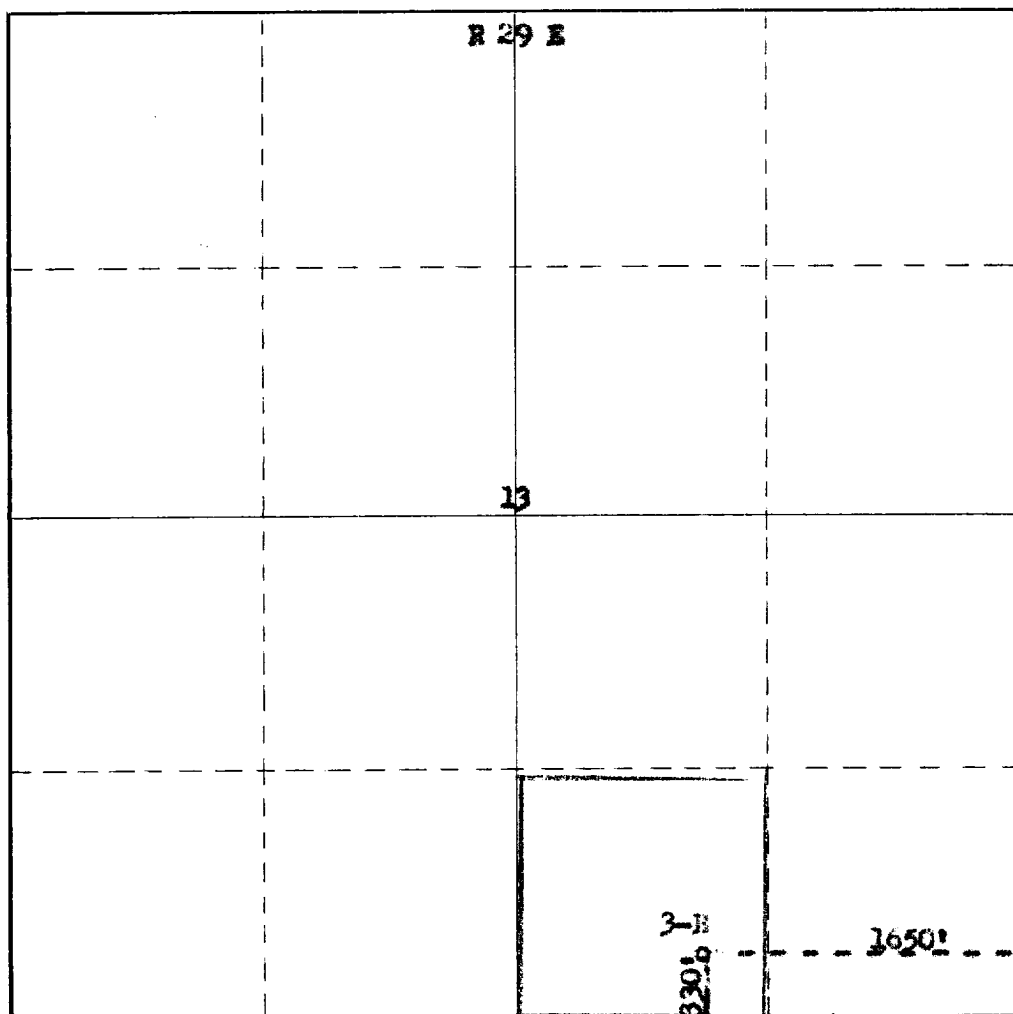
OCT 10 1968

Name
Position
Company
Date

I hereby certify that the well location shown on this plat was plotted from field notes of actual surveys made by me or under my supervision, and that the same is true and correct to the best of my knowledge and belief.

Date Surveyed October 4, 1968
Registered Professional Engineer and/or Land Surveyor H. BROWN
Certificate No. James H. Brown

N.M.O.S.No. 542



0 330 660 990 1320 1650 1980 2310 2640 2970 3300