

MEXICO OIL CONSERVATION COMMISS
WELL LOCATION AND ACREAGE DEDICATION PLAT

Form C-10,
 Supersedes L-128
 Effective 1-1-65

All distances must be from the outer boundaries of the Section

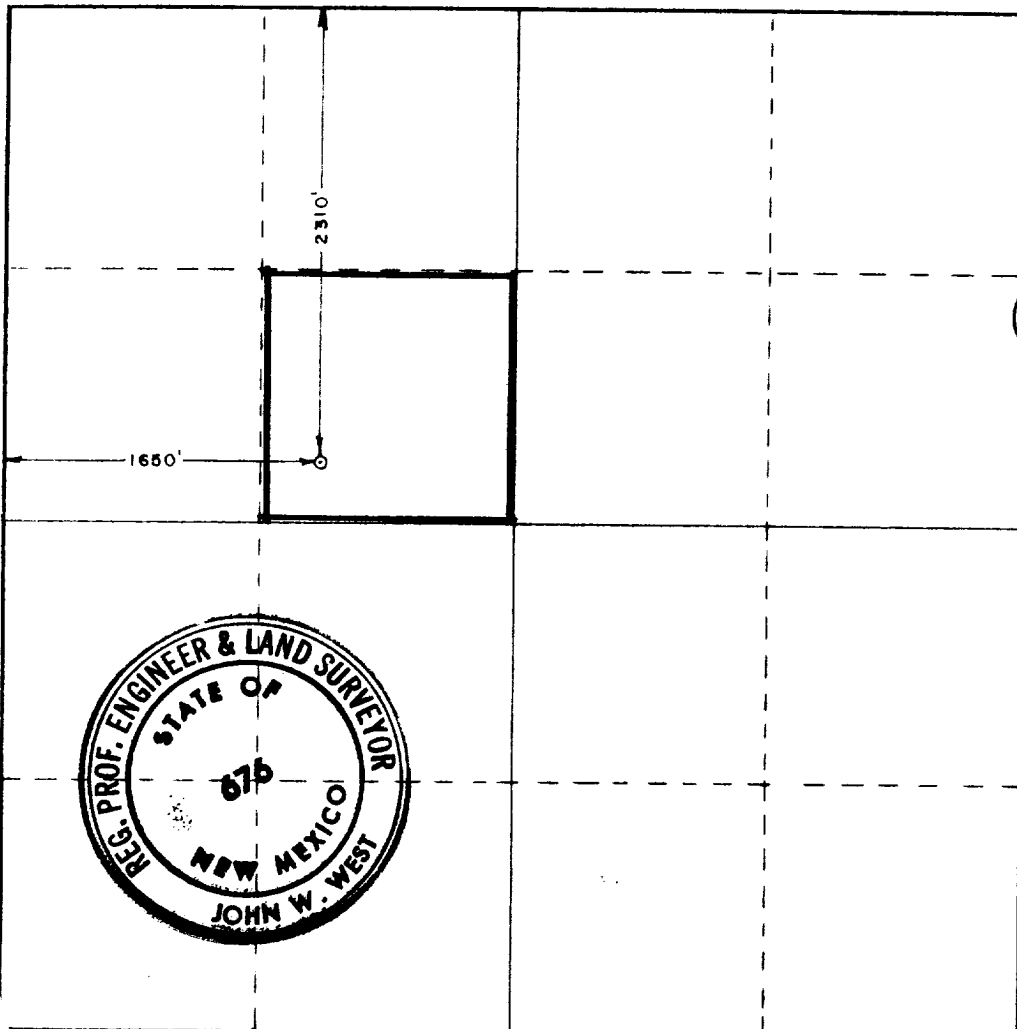
Operator McClellan Oil Corp.			Lease Marliss Marlissue		Well No. 2
Section Letter F	Section 24	Township 14 South	Range 29 East	County Chaves	
Actual Location of Well:					
2310	feet from the	North	line and	1650	feet from the West line
Ground Level Elev 3792.9	Producing Formation Queen Sand		Pool Undes. Double L Queen Assoc	Dedicated Acreage 40	
Acres					

1. Outline the acreage dedicated to the subject well by colored pencil or hachure marks on the plat below.
2. If more than one lease is dedicated to the well, outline each and identify the ownership thereof (both as to working interest and royalty).
3. If more than one lease of different ownership is dedicated to the well, have the interests of all owners been consolidated by communitization, unitization, force-pooling, etc?

☐ Yes ☐ No If answer is "yes," type of consolidation _____

If answer is "no," list the owners and tract descriptions which have actually been consolidated. (Use reverse side of this form if necessary.) _____

No allowable will be assigned to the well until all interests have been consolidated (by communitization, unitization, forced-pooling, or otherwise) or until a non-standard unit, eliminating such interests, has been approved by the Commission.



CERTIFICATION

I hereby certify that the information contained herein is true and complete to the best of my knowledge and belief.

John J. McClellan
 Name **Jack L. McClellan**
 Position **President**

Company **McClellan Oil Corp.**

Date **October 20, 1978**

I hereby certify that the well location shown on this plat was plotted from field notes of actual surveys made by me or under my supervision, and that the same is true and correct to the best of my knowledge and belief.

Date Surveyed
October 14, 1978

Registered Professional Engineer
 and/or Land Surveyor

John W. West

Certificate No. **John W. West 676**
Ronald J. Eidson 3239

330 660 990 1320 1650 1980 2310 2640 2000 1800 1600 1400 1200 1000 800