

WELL LOCATION AND ACREAGE DEDICATION PLAT

Superseded by
Effective 1-1-65

EP 2 1980

All distances must be from the outer boundaries of the Section.

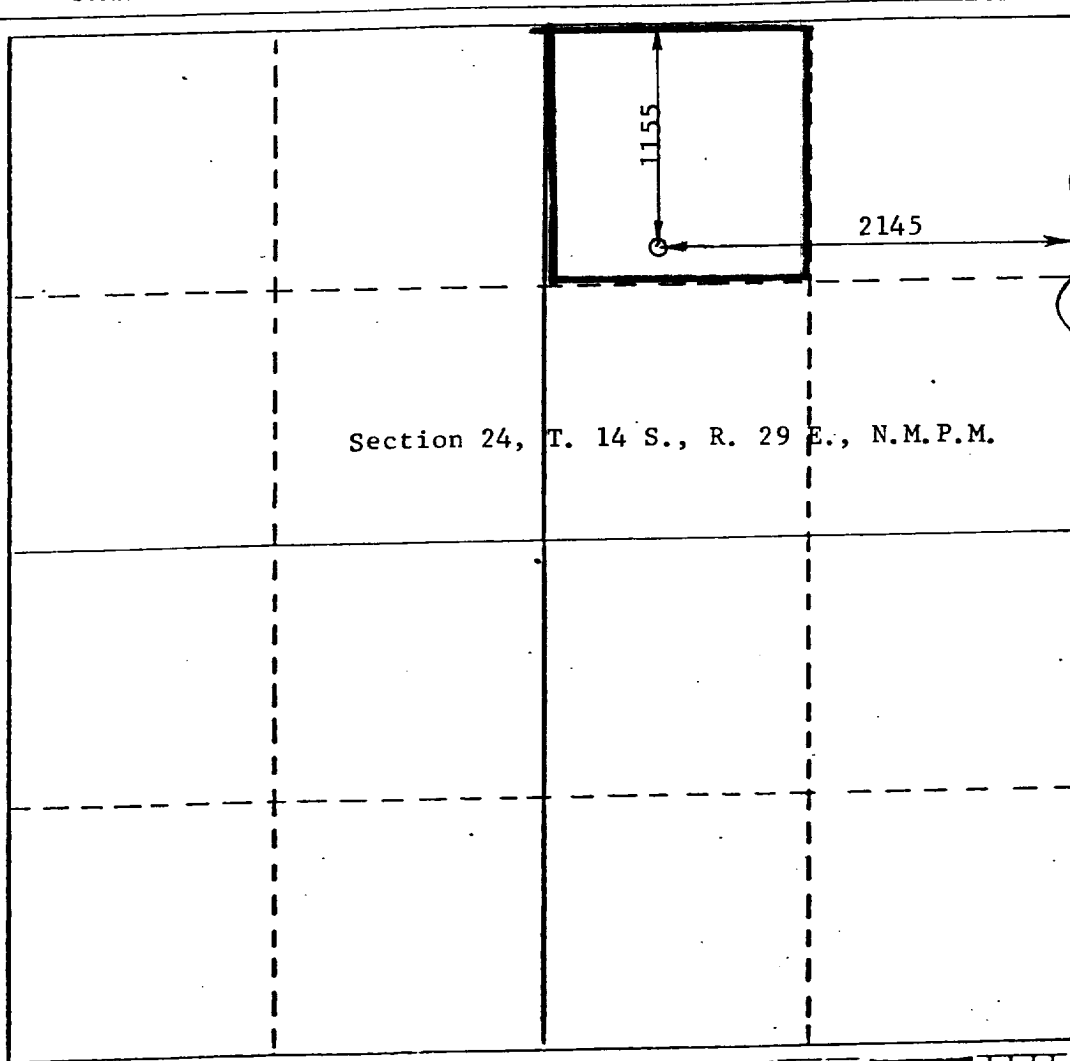
Operator McClellan Oil Corporation		Lease Marlissue State		Well No. 7	
Unit Letter	Section 24	Township 14 South	Range 29 East	County Chaves	
Actual Footage Location of Well: 1155 feet from the North line and 2145 feet from the East line					
Ground Level Elev. 3809	Producing Formation Queen Sand		Pool Double L Queen Assoc.		Dedicated Acreage: 40 Acres

1. Outline the acreage dedicated to the subject well by colored pencil or hachure marks on the plat below.
2. If more than one lease is dedicated to the well, outline each and identify the ownership thereof (both as to working interest and royalty).
3. If more than one lease of different ownership is dedicated to the well, have the interests of all owners been consolidated by communitization, unitization, force-pooling, etc?

☐ Yes ☐ No If answer is "yes," type of consolidation _____

If answer is "no," list the owners and tract descriptions which have actually been consolidated. (Use reverse side of this form if necessary.) _____

No allowable will be assigned to the well until all interests have been consolidated (by communitization, unitization, forced-pooling, or otherwise) or until a non-standard unit, eliminating such interests, has been approved by the Commission.



CERTIFICATION

I hereby certify that the information contained herein is true and complete to the best of my knowledge and belief.

Jack L. McClellan
Name
Jack L. McClellan
Position
President
Company
McClellan Oil Corporation
Date
July 16, 1980

I hereby certify that the well location shown on this plat was plotted from field notes of actual surveys made by me or under my supervision, and that the same is true and correct to the best of my knowledge and belief.

John D. Jaquess
JOHN D. JAQUESS
NEW MEXICO
July 12, 1980
Date Surveyed
6290
JOHN D. JAQUESS, P.E. & L.S.
Registered Professional Engineer
and/or Land Surveyor
Certificate No.
6290