

OIL CONSERVATION DIVISION

STATE OF NEW MEXICO
ENERGY AND MINERALS DEPARTMENTP. O. BOX 2088
SANTA FE, NEW MEXICO 87501Form C-102
Revised 10-1-78

All distances must be from the outer boundaries of the Section.

Owner McClellan Oil Corp.			Lease Marlisue Queen Unit <i>Tr.</i>		Well No. Tract 2 No. 9
Letter G	Section 24	Township 14 South	Range 29 East	County Chaves	
a) Postage Location of Well:					
2620 feet from the North line and		2075 feet from the East line			
and Level Elev. 3811	Producing Formation Queen		Pool Double L Queen Assoc	Dedicated Acreage 40 Acres	

Outline the acreage dedicated to the subject well by colored pencil or hatchure marks on the plat below.

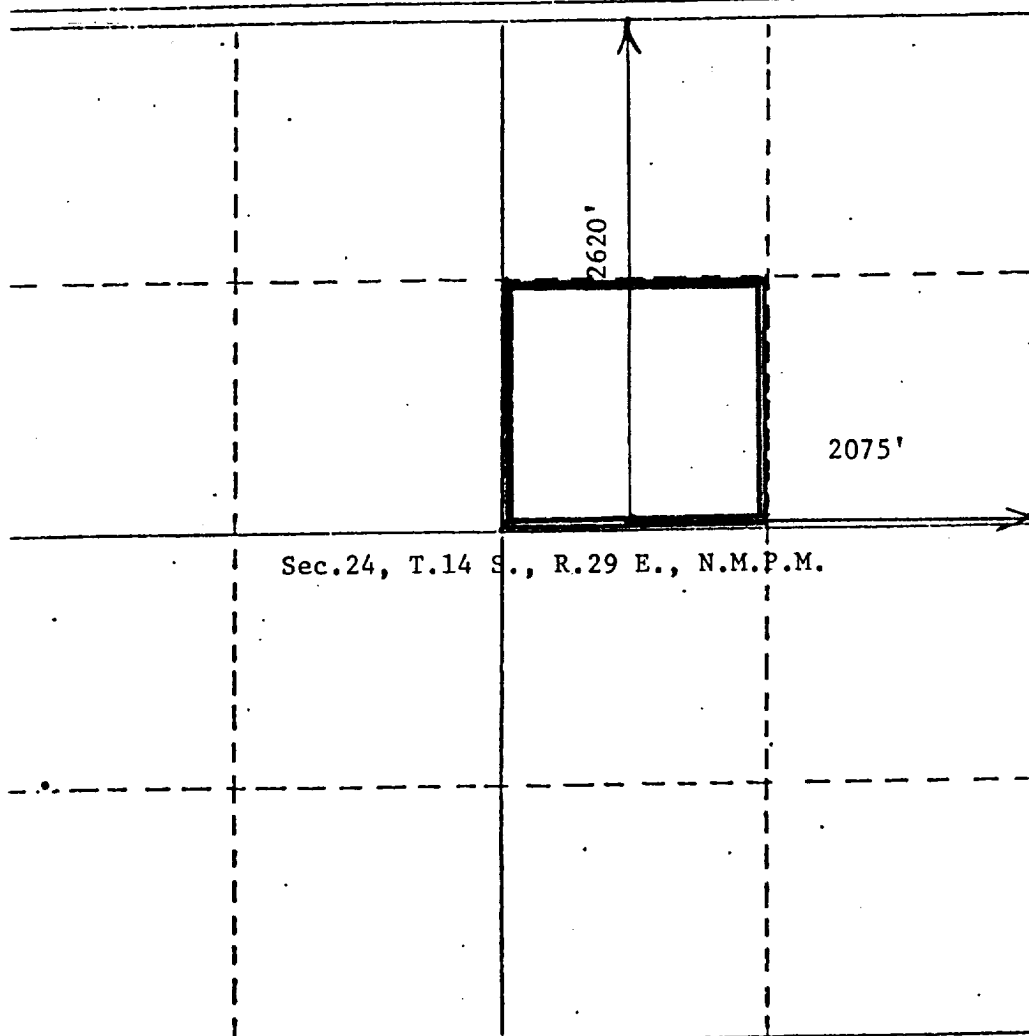
If more than one lease is dedicated to the well, outline each and identify the ownership thereof (both as to working interest and royalty).

If more than one lease of different ownership is dedicated to the well, have the interests of all owners been consolidated by communitization, unitization, force-pooling, etc?

☐ Yes ☐ No If answer is "yes," type of consolidation _____

If answer is "no," list the owners and tract descriptions which have actually been consolidated. (Use reverse side of this form if necessary.) _____

No allowable will be assigned to the well until all interests have been consolidated (by communitization, unitization, forced-pooling, or otherwise) or until a non-standard unit, eliminating such interests, has been approved by the Division.



CERTIFICATION

I hereby certify that the information contained herein is true and complete to the best of my knowledge and belief.

*Mark McClellan*Name
Mark McClellanPosition
GeologistCompany
McClellan Oil CorporationDate
December 16, 1983

I hereby certify that the well location shown on this plat was plotted from field notes of actual surveys made by me or under my supervision, and that the same is true and correct to the best of my knowledge and belief.

Date Surveyed
November 30, 1983Registered Professional Engineer
and/or Land Surveyor

John D. Jacques

Professional Engineer

330 660 990 1320 1650 1980 2310 2640 2970 3300 3630 3960 4290 4620 4950 5280 5610 5940 6270 6600